



# The Astronomical Allure of Glacier National Park



DarkSky INTERNATIONAL



## WHY DARK SKY?

The dark sky is a vital **cultural** and **historical** resource. The dark sky is important to **human** and **wildlife health** and **behavior**.

## INTERNATIONAL DARK SKY PARKS

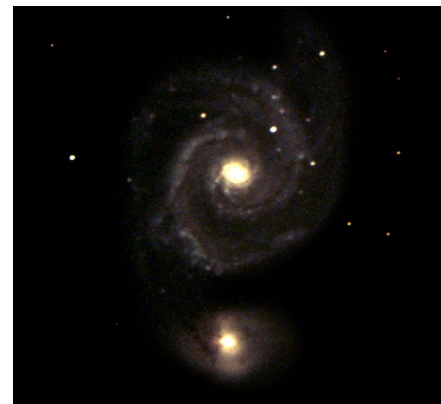
DarkSky International recognizes national parks for having exceptional **dark night skies**, **dark sky compliant lighting**, and **dark sky educational programs**.



## THE DUSTY STAR OBSERVATORY

The Dusty Star Observatory located outside the St. Mary Visitor Center has a **20-inch Corrected Dall Kirkham Telescope!**

These pictures were taken with this telescope:



The **Whirlpool Galaxy**  
23 million light years away



The **Dumbbell Nebula**  
1360 light years away

## GLACIER NATIONAL PARK IS A FULLY CERTIFIED INTERNATIONAL DARK SKY PARK!

But how does it **stay** one?

- ★ **Measure** dark skies every year with a Sky Quality Meter
- ★ Implement **100% compliant** lighting by 2027
- ★ Host dark sky educational **programs**: Star Parties & "Half the Park Happens After Dark"



## INTERESTED?

Visit the StoryMap *Nightfall in Glacier: A Journey Through the Dark Skies*



Learn about measuring the dark sky, GLAC's dark skies, light pollution, and dark sky compliant lights by scanning the QR code above!

**KEEPING THE PARK DARK:**  
Facilitating Dark Sky Status in Glacier National Park



To see an array of astronomical wonders, contact [debby\\_smith@nps.gov](mailto:debby_smith@nps.gov) & [dori\\_gorczyca@nps.gov](mailto:dori_gorczyca@nps.gov)