

Special Freshmen Arrival Issue

Get involved now!

by Joe Parker
Editor-In-Chief

So, here you are, you've finally made it to WPI. You're big time now. Whether you believe it or not, there are going to be a lot of changes going on during your first year. You'll make new friends, you'll make new enemies, and you'll be exposed to a lot of things that you probably weren't exposed to before.

There is a huge number of organizations on campus for you to check out, as well. Spread throughout the pages of this academic year's first issue of **Newspeak** are descriptions of just a few of the organizations which you can join. There is a group on campus for almost any interest, and if there isn't one for your particular interest, there is always the option of starting a new group.

Here's the part that may be the hardest to swallow. When classes begin and you get involved in the hustle and bustle of everyday life here

at WPI, you're going to think that you are very busy, possibly busier than you've ever been before. Well, the truth is that it only gets harder and busier from here. Now is the time to get involved with the clubs, sports, Greek organizations and activities that interest you. For most groups on campus the only prerequisites are interest and enthusiasm, not a wealth of experience. The secret is not to spread yourself too thin. Many of the activities that you join will take up a large portion of your time. It seems great to sign up for thirteen different organizations, but once you do that, the leaders or officers of that organization will expect you to play a role in the activities of said organization. There is nothing more frustrating for someone trying to coordinate an organization than a list of twenty people that expressed interest that never show up to a function or meeting.

At the same time, it is also very

See "Involvement" page 4

Newspeak: You do fit in

by Ray Bert
Editor-In-Chief

Right about now, you're walking around your new neighborhood: the WPI campus. Or you're sitting in your new home: your dorm room (hint: NEVER let your mom hear you call your place at school "home" - it generally induces hysteria). Either way you've got enough forms and reading material in front of you to choke a herd of water buffalo. So what is this one with the screaming (and expensive) red ink that you're holding now? Well, this one is a little different. This, you see, for better or for worse, is your student newspaper. As in run, written, edited, photographed, managed, circulated, laid out and even occasionally (on bad weeks, frequently) screwed up by students. ALL of it. We're even funded partly by money that comes from the activities fee on your tuition bill.

What's the point, you say? This: **Newspeak** is simply a group of stu-

dents with a range of specific interests who come together to put out a newspaper that will reflect a student's eye view of the school, and keep the rest of the student body as informed as possible about the issues and events that unfold on the WPI campus. The administration exercises NO editorial control - the responsibility (a large one considering that the school can be held liable for our irresponsibility) rests entirely with the student editors.

Virtually no one on the staff had any significant amount of experience when they joined - they had an interest in any of a variety areas, and they gave it a shot. The range of possibilities is wide: writing, photography, advertising, business, graphics and layout, cartooning. The staff is small - too small, really - and most of the editors attained their positions largely because they liked what they were doing and were willing to put in the time, not necessarily because of some extraordinary skill. Theories abound as to the historic difficulty in staffing the paper

adequately at WPI. One of our current favorites (because it makes us feel good) is that the paper looks fairly professionally done and that our office is nearly invisible, buried in the basement of Riley. These two, we feel, create the illusion (to some) that **Newspeak** is not an easily accessible organization. NOTHING could be further from the truth! (well, a few things could - "Cindy Crawford makes regular appearances on Thursdays", "the women on Daniel's 2nd never check out the men showering across the way on Morgan 2nd", etc.)

The paper looks good primarily because we have some good equipment and people who taught themselves to use it; we're working on the office thing (see Campus Center story). We're always trying to stay on the cutting edge of software and hardware. We're the proud owners of a new 486 system, a fax machine, a scanner and other cool stuff. Its been

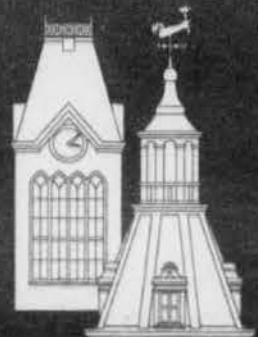
See "The rest of..." page 4



NEWSPEAK

The Student Newspaper of Worcester Polytechnic Institute

Vol. 20, No. 14 Saturday, August 22, 1992



Now that you're here, what's there to do in Worcester?

by Stephen Foskett
Newspeak Staff

I first came to WPI (and Worcester) two years ago, so I'm not an old-timer by any means. I expected that it would be exciting, that there would always be something going on. I figured I would have trouble keeping my attention on my studies, living in a city and all. I certainly was disappointed. But over the last few years of living in Worcester (I never went home again) I've found that this city isn't so bad after all. You just have to look around.

In future issues, I plan to talk about restaurants to take the parents to when they visit, where to spend a boring weekend, where to hang out on a Wednesday, where to spend all your

You're majoring in what?

Virtually every college sees approximately half of its students change their major at least once before graduation and WPI is no exception. Just because you have chosen to attend a college with a strong science and engineering focus does not mean you know exactly which major is right for you. Fortunately, WPI offers the Major Selection Program (MSP) to help students get the information they need to make a well-informed decision.

As a freshman, you might be in one of the following categories:

money, and things like that. But this week, since this issue is aimed especially at incoming freshmen, I think I'll talk about what there is to do over orie

First, you move in and get to know your roommates. Then you go out into the hall and meet everyone else. Then you experience DAKA. Then what?

Play with your stereo. Though I'll go into detail about in-dorm stereo listening in a future column, here are a few initial suggestions. Tune around the FM dial. Don't hear much? Surprise! We don't get much reception in the dorms. Try these stations:

90.5, WICN - Classical during the day, cool music after 11

95.5, WBRU - Good pop music all the time, IF you can pull it in

1.) You're confident about your choice of major and have a good idea of your career plans. Congratulations.

2.) You're confident about your choice of major, but not so sure about career options related to your major. In this case, you'll find several components of the MSP useful.

3.) You've chosen a major, but you're not sure it's the right one for you. You should consider enrolling in

See "Major..." page 4

100.7, WZLX - Good classic rock mix

107.3, WAAF - WPI's most popular rock station

At night, go out. Try the restaurants on Highland Street. Theo's is a great place to hang out. Tech Pizza makes great thin pizza, and Boomers will fill you up with their thick pizza. The Boynton has great food. For late night snacks (at a price) Acapulco is open until 4 AM.

Yearbook organizational meeting Sept. 2

by Michael Dorsey
University Relations

An organizational meeting for the 1993 Peddler, the WPI yearbook, will be held on Wednesday, Sept. 2, at 5 p.m. in the Peddler office in the lower level of Sanford Riley Hall (near the stairs by Alden Memorial). All students interested in learning how they can become involved in the production of this important publication are urged to attend, according to Peddler advisor Michael Dorsey.

"We'll share some pizza and soda and kick off the planning of the 1993 yearbook," Dorsey said. "We'll talk about the many ways students can make contributions to the book, and, perhaps, come up with some staff assignments. Then, as yearbook staffs at WPI have been doing now for some

What about Main Street? It's pretty deserted at night, and everything closes early. It's best to go during the day. It's within walking distance, but the city busses (WRTA) stop at Tech Cleaners on Highland Street at 15 and 15 past, and only costs 75 cents. You'll find the Galleria, a rapidly emptying mall. But there's also a Strawberries record store, a McDonald's, an arcade, a great book store, among others.

If you REALLY want a mall, go

out to the Greendale Mall. WRTA will take you near there (though it's hard to find the bus stop) but it's best to try to get a ride with someone who has a car.

On campus, you'll find Gompei's and MiniDaka for food. There are movies in Perrault Hall on Sundays. And Two Towers After Hours presents some cool "coffee house" events in Gompei's from time to time.

So, welcome to Worcester! More next week.

117 years, the editors, writers and photographers will choose a theme and set to work on the challenging and rewarding job of filling nearly 200 pages with information about, and photos of the graduating class and the institution they are leaving behind."

Dorsey said he is hoping to see students from all WPI classes involved in the production of the 1993 yearbook. "The Peddler should be a true reflection of the WPI student body and a meaningful record of the events all students find important and memorable," he said. "That can only happen when as many students as possible—from all classes—take part in its planning and production."

Dorsey urged students who are interested in working on the 1993 Peddler but who are unable to attend the organizational meeting to contact

him at the Office of University Relations, Boynton Hall, 3rd Floor; phone: 831-5609, e-mail: mwdorsey@wpi.

M*A*S*H Program

M*A*S*H is an academic support program for first-year students in mathematics and science courses, and is offered by the office of Academic Advising. Offered to all students enrolled in a supported course, M*A*S*H provides assistance in regularly-scheduled study sessions beginning the first week of the term.

M*A*S*H review sessions are offered for a limited number of courses which students and faculty have iden-

See "M*A*S*H" page 8

Pertinent student information

See pages 2 & 3

City Map...for somewhere to go

See pages 6 & 7

Campus Map...to avoid confusion

See page 12

Welcome Class of 1996!

STUDENT INFORMATION

Letter from the Dean of Student Life

Dear New Students,

As Dean of Student Life it is my pleasure to add my welcome to the many you will be receiving as you begin your orientation experience at WPI.

This publication as well as all of the programs and activities scheduled during New Student Orientation are designed to provide you with information and resources that we believe will assist you with your transition into WPI. While we have attempted to anticipate the needs of new students, please don't hesitate to let any one of the staff know if there are

additional services you need.

Orientation represents an exciting time for the WPI community for it is during orientation that we pass on not only the tools to facilitate your academic success but the values that define us as a community. Those values include a respect for the contributions of individuals, an appreciation for the diversity of our student body, a sense of discovery and entrepreneurship, and a spirit of cooperation.

We hope that you will take advantage of all of the orientation sessions that have been planned for you as well as the ongoing programming that occurs throughout the academic year

which reinforces our belief in the values of our community.

WPI is committed to providing its students with a first rate, quality educational program as well as an atmosphere conducive to and supportive of the social, cultural and emotional development of each of its community members. This commitment can only be achieved through a partnership between all members of the community. We hope that

you will become an active partner in all aspects of your WPI education.

All the best with the beginning of your new venture. Please let us know how we can assist you along the way.

Sincerely,
Janet Begun Richardson
Dean of Student Life

A welcome from Health Services

JoAnn Van Dyke
Health Services

WELCOME CLASS OF 1996, TRANSFER, UPPERCLASSMEN AND GRADUATE STUDENTS!

Now that you have arrived, unpacked and have begun to settle in, it's time to think about how you will change during your time here at WPI. Certainly academic growth will occur, hopefully leading to a rewarding career, letting go of old friends and establishing new ones and doors to new opportunities will open for you. As you begin this new journey, I hope you take time to think about the changes you will undergo in your health status. For many students, college marks the beginning of self care. Up until now you may have relied on your parents for the diagnosing and treating of all your illnesses, now the responsibility is yours. Basically, as a college student you are one of the healthiest segments of this society. However many of the health related behaviors begun in college will become habits for the rest of your life. How and what you eat, your exercise patterns, your use and abuse of alcohol or other drugs, your sexual attitudes and practices, the contraceptive methods you choose, your use of seatbelts (automobile accidents are the leading cause of death among college students), and how to handle stress, are all components of well being, and examples of behaviors you will try. Because you are young you have a sense of invulnerability. That's fine, you should. But look ahead to the future too!

Just as you are evaluating your course selection, you should consider your current health habits and see if they might lead you to a goal of maximum health. View your health as something you can achieve, and please take advantage of the programs and the services available at the WPI health service and other offices on campus.

The WPI Health office, on Hackfeld Rd, is open Monday thru Friday from 8 a.m. until 5

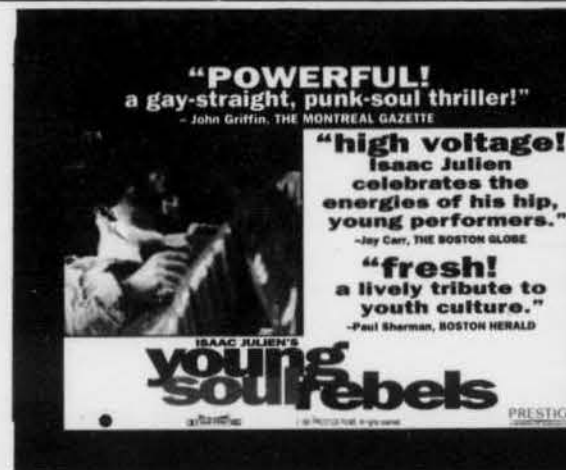
p.m.. JoAnn VanDyke R.N., C, the Director and Sharon Cahill R.N. are there daily and J.B. Hanshaw M.D. and Christine Purington M.D. are in the office four hours per day. All undergraduate as well as graduate students who have elected to pay the basic health fee are entitled to use the facility.

In the event that you should need medical care when the office is closed, you may reach a physician by dialing 756-4310. Leave your name and a number where you can be reached and a physician will return your call. In the event that it is an emergency call the WPI campus police at 831-5555.

Counseling for transition

Making the transition from high school to college is often a very exciting and eagerly anticipated time of life. The new social and academic environments are vastly different from what they were in high school. The education and experience gained at WPI prepare its graduates for a very bright and successful future. There are times, however, during these academic years when pressure, anxiety, or depression can hinder one's ability to successfully cope with her/his personal, social, or academic life. For first-year students especially, the drastic environmental change can strain existing worries as well as create new ones. The Counseling and Student Development Center on campus is a primary resource from which WPI students can benefit at no cost. The staff of caring and qualified

professionals are there to help students make important choices in all aspects of their academic and personal lives, learn how to study effectively in college, and control stress and anxiety-related symptoms. Services such as seminars and interest groups and group and individual counseling can help students deal with issues such as personal loss, relationship troubles, or feelings of depression. The Counseling and Student Development Center is located at 157 West Street and is open to all students from 8:30 a.m. until 5:00 p.m. Monday through Friday. Students are encouraged to call 831-5540 or drop by to make an appointment. In case of emergency, students may call Campus Police (who are available 24 hours a day seven days a week) at 831-5555.



Young Soul Rebels

British filmmaker Isaac Julien combines a complex murder mystery with a revealing look at London's volatile music scene during the 70's. Young Soul Rebels takes viewers into a violent world where racism runs rampant, alternative life styles are beginning to emerge, and soul music picks up the beat of the times.

Monday August 24, 1992
10 pm, Perreault Hall

LENS
&
LIGHTS

Sunday August 23, 1992
8 pm Alden Memorial

Atomic Flashbacks

A Retrospective on the future

A trip through time and space

$$E = MC^2$$



Alan Zuberbuehler as
Albert Einstein



LIFE AT WPI

STUDENT INFORMATION

If only I'd known...

Taken from *OFF TO COLLEGE, 1991* edition

...I'd have to learn to sleep with the lights on, the radio blaring, and the phone ringing.
 ...my old car takes twice as much money and time to keep running away from home and that it's not too bad to walk sometimes.
 ...college isn't all fun and games. It's hard work and takes a lot of self-discipline.
 ...how lonely a Saturday night can get.
 ...I'd need an iron and the knowhow to use one.
 ...everybody's human and I'd have to learn to live with different kinds of people.
 ...I could and should have learned to type.
 ...there'd be no one to tell me to do my homework before I turned on the TV or read a book.
 ...to be more aware of current events so I wouldn't be so stupid at bull sessions.
 ...to forget college and get a job.
 ...it's not so hard as I thought it would be because it's interesting.
 ...to be really open to new, controversial ideas, not necessarily to accept them but to evaluate them.
 ...that my prejudices would come out, even though I thought I didn't have any. I have to

admit to them and get rid of them.
 ...not to get so busy that I don't have time for people.
 ...that getting used to a roommate is like getting married without being engaged. It takes a great deal of compromise, lots of give and take, to live with one person. I should let those minor irritations go by, but if something really important bothers me, I should talk it over with my roommate.
 ...that I shouldn't be afraid to ask questions.
 ...that there is no little brother or sister to get mad at when things go wrong.
 ...that the best way to study is without any form of distraction, e.g., radio, people, etc.
 ...how to make best use of my time - what things are most important and therefore need to be done first.
 ...that college isn't as hard as everyone makes it out to be.
 ...that I shouldn't go everywhere and do everything with my roommate or we'll soon be at each other's throats.
 ...that if I keep up with my reading, I can avoid the last-minute panic.
 ...that the way to remember is to review, review, review, whenever possible.
 ...to expect loneliness. It takes time to get past superficial relationships and form close relationships.

...that the people I thought at first would be great friends may turn out not to be.
 ...not to judge people by their looks or reject them for what they say, but be ready to accept differences.
 ...that people who said I'd have a good date life weren't necessarily right.
 ...how much I'd change, so I could get my parents used to the idea.
 ...that I could save a lot of money by buying used books from other kids.

I should have known....

...to read more in high school and learn to read faster.
 ...that if you wait until vacation to catch up on your school work and sleep, you'll get neither done and will ruin your vacation to boot.
 ...what it's like to be completely on my own, making all my own decisions.
 ...what kind of clothes are worn at this particular school. Here everyone dresses casually.
 ...to take it as it comes. That I shouldn't get uptight before I even know what's going on. Play it cool.
 ...that it's terribly easy to become apathetic.
 ...that there's more to learning than just

what happens in the classroom, or while I have my nose in a book. Learning comes from what happens in the classroom, as well as outside the classroom.

Why didn't I realize....

...that I would need so much more money than I had expected. All the little things that you usually forget about add up quickly!
 ...that I should take advantage of campus events like concerts, clubs, and discussion groups. Not only does it round out my personality, and make me a more interesting person, but there is also the chance of getting a date with someone I meet there.
 ...that the best education comes from getting to know people, not just books.
 ...that the most important thing I should try to learn is to think and solve problems and get to know myself, accepting myself as I am.
 (Ed. Note: Then again, if you knew everything, realized everything going in, did everything right the first time and generally never screwed up, you wouldn't learn half as much, you'd have a lot less fun and not nearly as many amusing anecdotes. How about: "If only I'd known that if life is the ultimate experience, college is the ultimate training course before the real thing.")

ARTS & ENTERTAINMENT

Music Review Aluminum Tracks: Helmet

by Stephen Foskett
Newspeak Staff

Helmet is an enigma. They have a very metal sound, somewhat reminiscent of Metallica, and yet, listening to them, you have the feeling this could be a new Henry Rollins band. The singer, Page Hamilton, formerly of Band of Susans, sometimes wails like Ozzy, sometimes growls like Rollins, sometimes shouts like a dozen hardcore bands.
 Interscope signed the band in the wake of Nirvana-mania, expecting a new Nirvana. They got Steve Albini to produce the lead single, "In the Meantime," a song which refuses to tell you if you're listening to a metal band, a hardcore band, or something in between. They got the band to make an acceptable video for MTV, and got the music channel to play the song as backing to practically every show. The perfect recipe for a new Nirvana.
 But what about the music? It's great, overdriven, distorted guitars de-tuned a few steps. Every song is tight, every solo is timed

just so, and yet the album feels spontaneous. The listener doesn't feel like he's the victim of some great marketing plan, though he really is. The lyrics are there as emotion stirrers for the audience and place holders for the band. With only a few exceptions, you won't see people quoting this band on the walls and desks of America. I was pretty disappointed when I read what Page was REALLY saying on "In the Meantime". I thought it had some sort of meaning. The main exception, though, is the 4th track, "Unsung". This one, an older song, sounds like it was written by someone else. The words just work. "To die unsung would really bring you down.../die young is far too boring these days".
 So did Interscope get the next Nirvana? I don't think so. Helmet is too inaccessible for the vast mall-rat, record-buying public. But then, every Helmet fan already knew that. What they did get is a great album, well worth the price. I think I'll be listening to this one for quite a while.

Music Review Toad the Wet Sprocket

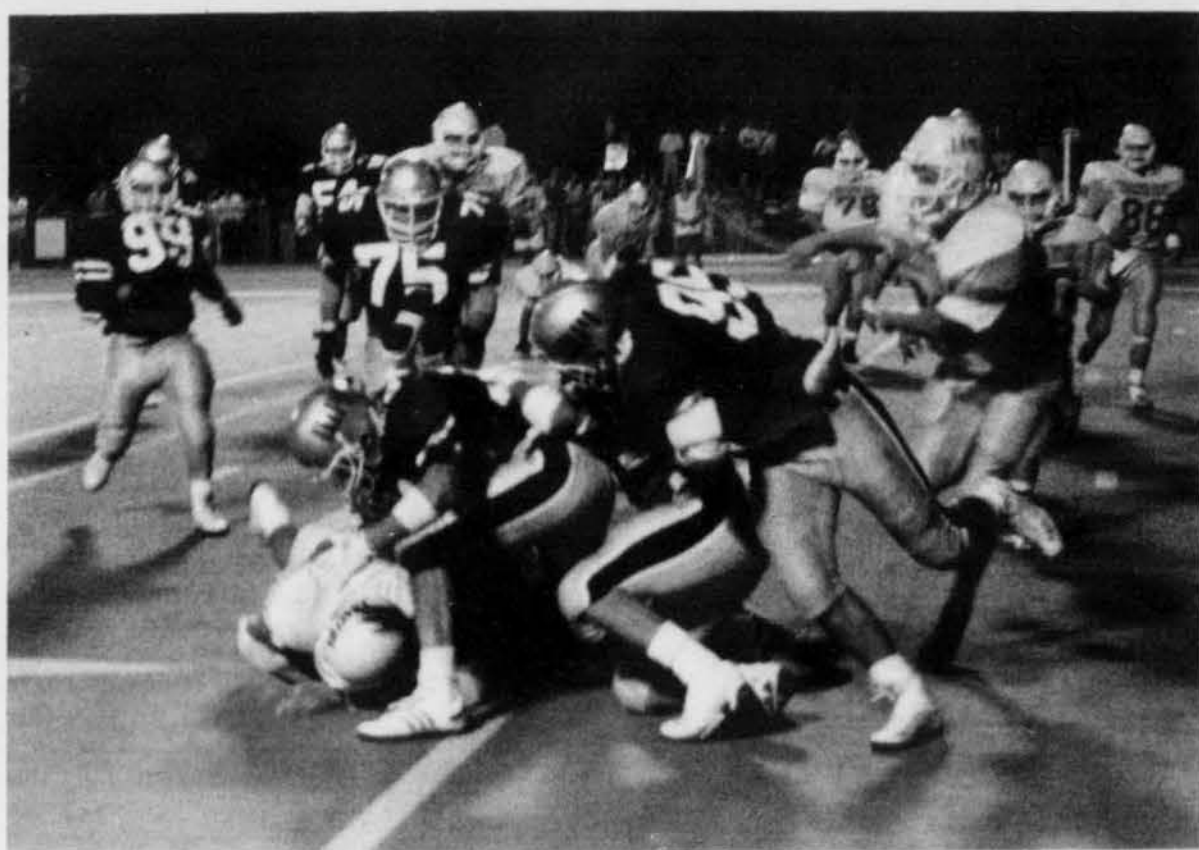
by Eric Kristoff
Photography Editor

About a month ago, one of my friends gave me a CD to borrow and told me to listen to it. (He does this a lot.) It was Toad the Wet Sprocket's third album *Fear*. I expected it, as usual, to be industrial rock like Nine Inch Nails or Ministry, but was pleasantly surprised.
 Toad the Wet Sprocket (TTWS) is a four person group. They play basically folk-type music mixed with rock. The product can be a little mellow, but definitely enjoyable to listen to. The new album is made up of twelve songs. The third song, "Butterflies" is the theme around which the album cover and inside sleeves are based. A trite theme, but well used. So far, one song, "All I Want," has been released on radio, in video, and as the theme playing background to some new 90210-ish, teeny bopper-ish TV program. (We can't have everything.) My three favorites are "Pray Your Gods," "Something to Say," and "I Will Not Take These Things for Granted," which are probably the

three lowest key songs on the album.
 I have listened to songs on TTWS's other albums, and *Fear* is decisively their best album. However, I have heard them live, singing songs from all of their albums, and every song showed improvement. In fact, TTWS is playing Toad's Place (kinda neat, huh) down in New Haven, CT, on August 23. I'm sure it will be great. It's amazing what a little experience will do. TTWS has come into their prime, proof by this album, and, I feel, will continue to get better. With strong themes like love (of course), religion, anti-rape, and friendship, TTWS is definitely making a statement. I would strongly recommend adding *Fear* to your collection.



LIFE AT WPI



PEDDLER

EDITORIAL

To the Class of '96: Open it up!

As the 1992-93 academic year begins, the class of 1996 must be informed about the largest battle currently being waged here, and that is for the speedy construction of a Campus Center. For those of you that are new to the Campus, there was a Commission put together last year by President Strauss to study the current state of Social and Residential life here at WPI. The Commission scheduled an open meeting to hear the concerns of the student body. This meeting was the most widely attended in recent history, and many relevant problems were discussed that evening.

The recommendations for improvements made in the Commission's final report covered aspects of student life ranging from Greek life and the role Greeks play in social life to campus diversity and safety to campus space usage. At almost every turn the Commission put forth the notion that many of the problems identified could be alleviated or eliminated with the construction of a Campus Center.

Once again, for the benefit of those who haven't been around for most of the discussion, WPI is, from all the information that has been gathered, the only four year comprehensive college in the country that does not have a Campus Center where the student body can gather to meet new people, exchange ideas, and generally relax. It can be a place where students and faculty

can meet in a casual atmosphere. Most also have study areas where students can meet to work on homework, and generally serve as a central location for student organization offices. Many also contain dining facilities (ranging from fast food to five star dining, depending on the campus), ball rooms, game rooms, anything that can help the student relax and get away from the studying which constantly looms. WPI has no such comprehensive facility. Many people like to say that the Wedge is WPI's Campus Center, in fact, prospective students are told just that when they tour WPI's campus. In reality, the Wedge is not a campus center, and furthermore could not ever function as a campus center.

Since the publication of the Commission's report there has been some activity regarding the Campus Center issue by the administration and the trustees, but not enough activity for something seen so universally as the greatest need on campus. Sources indicate that the plan currently favored by the administration is an underground "strip mall" which will connect the various buildings around the Quad. This would connect the "performing arts center" of Alden Hall, the "dining facilities" of DAKA and Gompei's Place, and the sporting facilities of Harrington Auditorium and Alumni Gym. But that is still not a Campus Center. To those of you who favor this plan: **You're still missing the**

point! This plan does not recognize the need for a building which would facilitate the offices of many of the groups on campus. It does not recognize the need for a central location where students (and faculty) can congregate for non-academic purposes. The student body wants and deserves a **new comprehensive facility** that addresses these needs. The Commission Report cited the need for a **Third Tower** to complement WPI's current Two Towers. It did not cite the need for Two Towers and a Tunnel.

This is where the Class of 1996 comes in. The incoming Freshmen have the greatest chance of any class here of seeing a completed facility. The members of the Freshmen class must join in and become active voices in the campaign to get a Campus Center for WPI. Would you like to sit with the guys from the room next door and talk, or would you like to meet people from different majors, different class years, different backgrounds and different interests to talk with? As it is now, students can rarely meet with a professor to talk about the weather. A campus center would make this more possible. WPI is for the most part a very closed social community, and you can help open it up. Don't let up. We can't let up, because if we do, the prospect of a real Campus Center will fade into oblivion.

OPEN IT UP!

NEWS

Fall Weekend '92 to replace Parents' Day and Homecoming

by Lisa Hastings
Alumni Office

Students, parents, alumni and friends are invited to the WPI campus on Friday, September 18 and Saturday, September 19 for Fall Weekend '92. For the first time, WPI will combine two annual events, Parents' Day and Homecoming into one weekend filled with activities and open to the entire WPI community.

Fall Weekend offers something for everyone. The festivities begin on Friday night with singer/songwriter Don Henry performing in the newly renovated Alden Memorial Performing Arts Center. A reception will be held following the performance.

On Saturday morning, participants may attend one-hour lectures by WPI faculty, choose from a variety of WPI tours, attend the welcome address by President Jon C. Strauss and hear

from Professor Al Sacco about his experiences as an alternate payload specialist in NASA's Microgravity Laboratory.

The Quadrangle also comes alive mid-morning. The highlight this year will be a miniature golf course constructed by WPI student groups. Student organizations, greek organizations, residence hall floors and teams of individuals are invited to design and build one of the eighteen holes. Prizes will be awarded for quality of construction, creativity and theme.

Following a Fall Weekend buffet lunch in Morgan Hall, students, parents and alumni will head to alumni field where the WPI Engineers will take on Union College in WPI's second home game of the season. Immediately following the game, the freshmen class must face the sophomores in the Rope Pull across Institute Pond.

The Rope Pull is the first in a series of competitive events held throughout the year between the freshmen and sophomore class. The winner of this Freshmen-Sophomore Rivalry earns the privilege of having their class year inscribed in the bronze Goat's Head.

For those looking for alternatives

to the game, the afternoon offers information sessions about various aspects of WPI life, a Children's Film Festival featuring *Herbie the Love Bug* and *Willie Wonka and the Chocolate Factory* and a College Bowl Challenge pitting students against teams of parents and alumni.

Fall Weekend festivities conclude on Saturday night with WPI Comedy night in Harrington Auditorium. The evening will feature comedians and is sponsored by SOCCOMM, the WPI Social Committee.

Mark your calendar for September 18-19 and plan to join in the fun!

Women's Mentoring Program established

This year WPI has established the Women's Mentoring Program (WMP), replacing the Big Sister/Little Sister Program of the past. The main goal of WMP is to facilitate the adjustment of new female students to the WPI community by pairing them with upperclass women in a mentoring relationship.

Last D term the chairperson of WMP, Tori Pesek, and a seven member committee organized a series of

events to take place throughout the school year which meet women's professional and social needs. One event is planned during each term providing females an opportunity for social interaction. To kick off the start of the Women's Mentoring Program an Ice Cream Social will be held Wednesday, August 26 from 4:00 pm to 5:00 pm on the Higgins Lawn.

To enhance the communication between mentors and mentorees a

newsletter will be sent to all WMP participants. The letter will contain a variety of information regarding upcoming WMP events, opportunities for women to become involved in the WPI community, and other information pertinent to female students at WPI.

Approximately 200 new female students and upperclass women are involved in the program.

Involvement is the key ingredient

continued from page 1

easy to get too caught up in classes, and take notice of nothing else. You have an opportunity now more than ever to have your voice heard regarding the decisions that may affect the time you spend here. You like music? Join the SocComm pub committee and you have a say as to the acts that will perform here. Interested in politics? Join Student Government and have a say on some of the big issues. Or, if you gain notice of administration, you can sit on a commit-

tee to study various problems on campus. If you want to get an insiders view of what's happening on campus and keep the student body informed, or merely entertain them with your literary prowess, join **Newspeak**. If making decisions is not your cup of tea, there are plenty of other things to quench your thirst for involvement. Interested in the arts? Check out Pathways for creative writing and artwork, Masque for the performing arts, or, if you're talented musically, join one of WPI's many highly regarded musical and/or vocal groups. WPI

also has many varsity level and club sports for the athlete in you. If the Greek lifestyle appeals to you, check out the many rush events that will be taking place soon.

If you're here, you think that WPI has a good academic program, and that's true, but good grades shouldn't be your only goal. Get out there, have a good time! Make the most of *everything* that WPI has to offer. Once college is over, you can't go back and do it over again. Don't have any regrets: don't end up wishing you had done something. DO IT!

Major Selection Program

continued from page 1

the MSP Seminar which meets on Wednesdays from 2:30-4:00pm during A term. In this non-credit seminar (which you take in addition to your three academic courses), you'll hear from faculty and upperclass students about the full range of majors available at WPI.

4.) You're totally confused about your major and are officially UNDECIDED. Don't worry, the MSP will

help you to get on track.

Regardless of which category you fall into, you're invited to take advantage of any MSP service which you find helpful. Check your New Student Orientation schedule for opportunities to get more information about the Major Selection Program or stop by the MSP Office on the first floor of Boynton Hall.

The rest of the story

continued from page 1

said that we probably have a more state of the art system than many schools with journalism departments. Come find out for yourself.

Beyond that, we're always looking for new people - someone who is interested enough in some aspect to get involved and contribute new ideas. Like to write? You can get the scoop on important happenings by being a news reporter, review various performances and events on campus or do special interest stories by being a features writer, voice your thoughts and observations in a commentary column, or cover sports events for **Newspeak's** fledgling sports page. The key is to find a need and fill it. Photography your thing? Specific photo assignments are always available, as well as general photos capturing life at WPI.

Management majors who are looking for some practical experience and a resume builder can check out the business and advertising departments where you help control the flow of

money via accounting, as well as dabble in public relations and the joy of delinquent advertisers and collection agencies, budgets and much, much more. Now how much would you pay? Don't answer, you'll also get to design ads, field threatening phone calls, make a few yourself...

So, are you looking for something to fill up that free time after Calc I homework and the Chemistry Labs (don't they suck?) are all done? Come down and check us out - we're located in the basement of Riley on the Daniels side, or you can drop a note to box 2700, email us at newspeak@wpi.wpi.edu, call us at 831-5464 (voice mail) or fax us at 831-5721 (really!). We're a bunch of people that are just like you (well, sort of like you anyway). Its work at times, but there's a lot of fun as well, and satisfaction in spades on every Tuesday that you help create a good issue of the paper. Use your voice, join **Newspeak!**

WPI Newspeak

The Student Newspaper of Worcester Polytechnic Institute

WPI Box 2700, Worcester, Massachusetts 01609

Phone (508) 831-5464

Fax (508) 831-5721

Editors-In-Chief Ray Bert Joe Parker	News Editor Scott Runstrom	Graphics Editor Kevin Parker	Faculty Advisor John Trimbur
Photography Editor Eric Kristoff	Features Editor Jennifer Kavka	Graphics Staff Tom Sico Troy Thompson	Associate Editors Erik Curin Aureen Cyr Chris Silverberg
Assistant Photography Editor Byron Raymond	Writing Staff Derek Bacon Brandon Coley Eric Craft Tricia Gagnon Bryan Gunn Steve Sousa Shawn Zimmerman	Business Editor Ty Panagopolos	Advertising Editor Liz Stewart
Photography Staff Chris Lee Sue MacPherson Mike Pereira	Sports Editor John Grossi	Business Assistant Brant Smith	Circulation Manager Amanda Huang
		Cartoonist Charlie Gillis	Typist Dennis Obie

WPI **Newspeak** of Worcester Polytechnic Institute, formerly the **Tech News**, has been published weekly during the academic year, except during college vacations, since 1909. **Newspeak** has been printed on recycled paper since January, 1991. Letters to the editor should be typed (double-spaced) and must contain the typed or printed name of the author as well as the author's signature and telephone number for verification. Students submitting letters to the editor should put their class after their name. Faculty and staff should include their full title. Letters deemed libelous or irrelevant to the WPI community will not be published. The editors reserve the right to edit letters for correct punctuation and spelling. Letters to the editor are due by 9:00 a.m. on the Friday preceding publication. Send them to WPI Box 2700 or bring them to the **Newspeak** office, Riley 01. All other copy is due by noon on the Friday preceding publication (this includes electronic submissions, classifieds, greek and club corners) and must include the author's name, telephone and box number. We reserve the right to edit all other copy. All ads are due by noon on the Thursday preceding publication. Articles may be sent via the Encore by mailing them to our account ("Newspeak"). The editorial is written by a member or members of the **Newspeak** staff. It does not necessarily reflect the opinions of the entire **Newspeak** staff. **Newspeak** subscribes to the Collegiate Press Service. Printing is done by Saftus Press. First Class postage paid at Worcester, Massachusetts. Subscription rate is \$20.00 per school year, single copies 75 cents within the continental United States. Make all checks payable to WPI **Newspeak**.

FEATURES

The history of orientation at Worcester Polytechnic Institute

Times have changed with regards to freshmen orientation. During orientation freshmen are no longer required to wear a "freshman cap," cross West Street by the Earle Bridge only, and carry the Tech Bible at all times with their name and hometown in 2" letters. This article presents a look at the past orientation programs.

During the 1960's, before WPI had started to admit women (1968), orientation was called "Freshmen Week" and consisted of a five day program beginning around the second week of September before classes started. All freshmen were given a clear set of "Freshmen Rules" upon their arrival. After moving their son into his "dormitory," parents were invited to attend a general session about WPI and an hour long reception before departing for home. Freshmen, on the other hand, were in store for a series of programs intended to have them "meet faculty and administration and become

acquainted with students and Tech Traditions." These programs included assemblies, meetings with academic advisors, receptions, presentations on extra-curricular activities and numerous social activities. One of the consistent programs during the 60's was the Opening Convocation in Harrington Auditorium with the institute's president presiding.

"Freshmen Week 1970" began the decade of starting freshmen orientation the first week in September for three or four days before classes began and then continuing with more social programs to close out the week. Contact with faculty remained relatively restricted to a freshmen's faculty advisor or a faculty member who temporarily filled that role. There were general sessions by the academic deans about faculty advising and WPI's Plan. For unknown reasons, there was a significant decline in those activities which were "traditional" including the omission of the Opening

Convocation (although it was held in 1979) and Freshmen Assembly. In 1973, WPI began participating in the Higher Education Research Institute's Cooperative Institutional Research Program (CIRP) which it has continued to administer to all incoming freshmen ever since. By the late seventies, a separate transfer orientation program had been developed and a few programs especially for women (i.e., The Big Sister/Little Sister Program) had been added.

In an effort to meet the changing needs of WPI's student population, with particular concern for the lack of attention previously given to parents, the orientation program in the 1980's took on a significantly different format which included a three day summer orientation program in June, in addition to the more traditional three day arrival program. A pilot program was implemented in 1981 to bring to campus on two successive weekends in June

150 students and 300 parents. The programs for students and parents were designed to take place simultaneously with as little contact as possible between them during the two day period. Both groups were exposed to significant contact with upper-class students, faculty and administration with one of the major goals being that of learning about the WPI academic program and becoming familiar with the campus environment. The program content was comprised of a variety of activities which included informal social sessions, presentations of projects by faculty and students, and sessions on student life, campus support services, academics and the changing student/parent relationship. The topic of transition to college life was consistent throughout the program.

Due to the overwhelming success of the pilot program, WPI moved to a mandatory June program in 1982 for all freshmen with the parent program included. This program was attended by upwards of ninety percent of the freshmen class and approximately seventy percent of their parents. The program received extremely positive evaluations by both parents and students. The fall arrival program continued to contain information about financial aid, registration, and co-curricular activities. There was also a concentrated number of social opportunities during the first week. International students and transfer students maintained independent fall orientation programs only.

By the end of the 1980's, the desire to include additional programs to the summer program made it difficult to remain within the program's original two day format. In addition, the demographics of entering freshmen had changed with almost forty percent coming from outside of the New England area making it difficult for students and their families to attend a summer orientation program. The desire to revise the term "new student" to include international students and transfer students also suggested a return to the expanded fall program format which currently exists.

Your Guide to an exciting day of Jury Duty

By Jennifer Kavka
Features Editor

At some point in their lives, many people have received or will receive that piece of paper in the mailbox summoning them to court for jury duty. For me, that experience occurred this past summer. Upon first opening the letter, you see the expected court date and the time of eight am. Then you see the questionnaire you must not lose (rumored on penalty of death), and must fill out prior to that date to bring with you. Another piece of paper tells you that it must be returned immediately to inform the court if you want to postpone the date or move your appointment to the courthouse of your choice. Once you have filled out these preliminaries, all you have to do is notify your employer or arrange your classes and then wait.

The week before you are supposed to report for jury duty, you receive a "Trial Juror's Handbook" with at least 50 question and answers including proper etiquette for urination while you're on a jury in the middle of a case. It tells you what to wear, what to bring to eat,

but it leaves out one very important detail - to bring several outrageously long novels. As in this is a good time to begin that 789 page novel you promised your high school English teacher you'd read during the summer. It's either the book, or watching Montel Williams on a microscopic television screen as far away from the rows of chairs as possible. But, even though the wait is quite long, it is also quite exciting if your panel is chosen.

Upon arriving at the courthouse, you receive a card with a panel number and a seat number. These are computer-generated random numbers. Once you have this ticket you are sent to a large room (sorry, no smoking - check your nicotine fix at the door) where you sit and sit, either straining your eyes to see the television or becoming totally engrossed in that three and a half inch binding novel. An informative video is shown explaining the different cases and what you might encounter that day. A court officer will then proceed to the podium and announce the first panel chosen. This panel of around fifteen people is then sent to a smaller room which allows smoking,

prompting a mad scramble for the lone ashtray. After about half an hour, an officer may appear and announce that you are to go to the bathroom because you are about to go into court. So relieved, you are led to a courtroom, sworn in, and the jury experience really begins.

You must take out that card with your panel and seat numbers while the judge chooses numbers. In my case the judge started with number 1. You may be challenged about your answer to something specific on your questionnaire. Only two people are excused from the jury for this reason. After the jury is chosen, those who have not been picked are free to leave. This may be as early as 11 am, or as late as 4pm. Your panel may never be called and the court officers will excuse you as early as possible. Once you are dismissed, you will not be called for jury duty again for at least three years. So when the time comes when that letter arrives again, or for the first time, think about jury duty as a learning experience that can be very interesting, informative, or just downright boring....

What is an Orientation Leader?

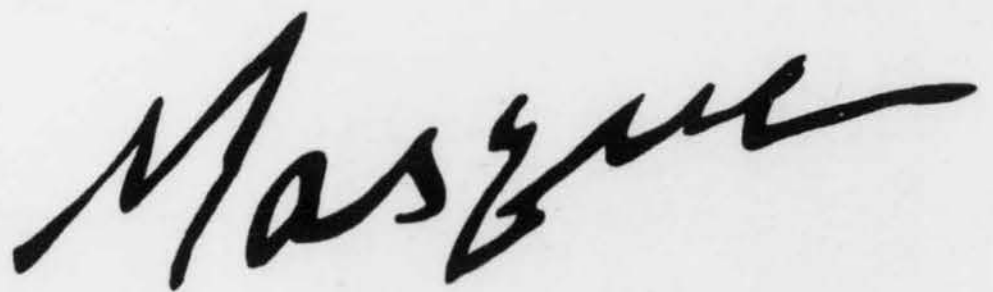
New student orientation would not be complete without the participation of "orientation leaders" (OLs). Orientation leaders are undergraduate students who have volunteered to participate in a semester of leadership training programs and return to campus six days early to move new students into their residence halls, facilitate small group meetings with new students and parents, set up programs and be available to answer personal questions and concerns.

Training for the OLs began in January and included sessions on communication skills, diversity apprecia-

tion, campus services and academic programs. Resident Advisors (RAs) and OLs joined together for many of the training sessions.

This year's orientation staff is composed of a cross section of majors and class years. All of the OLs are involved in at least one other student activity, with the majority of OLs participating in a club or varsity sport.

New students are encouraged to seek out the help of an OL or RA during the months ahead. In October, applications for next year's OL staff will be made available through the Student Life Office. New students are encouraged to apply!



MEET FRIENDS AT
 *** WORCESTER'S MOST POPULAR RESTAURANT
Acapulco
 BARBECUE
 MEXICAN & AMERICAN FOOD
 OPEN TILL 4 A.M.
 THE PLACE FOR FAJITAS, BBQ CHICKEN & RIBS
 DELIVERY SERVICE 791-1746
 792-0046
 PROMPT CARRY OUT SERVICE 107 HIGHLAND ST.





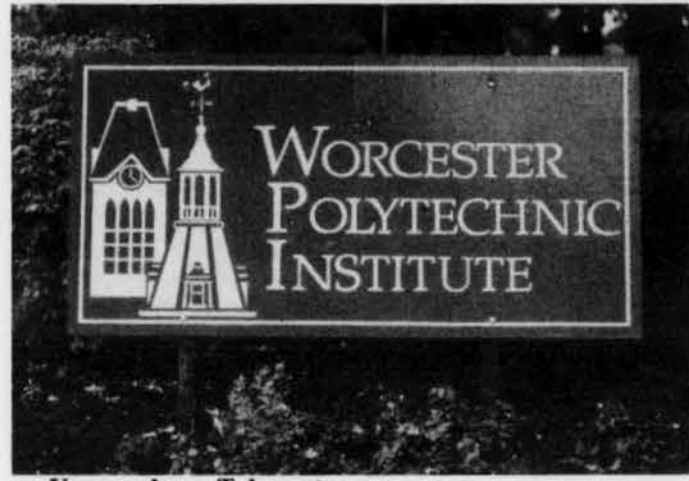
"A MAGICAL AND MOVING RIDE."
 —David Ansen, NEWSWEEK MAGAZINE
 KEVIN COSTNER
FIELD OF DREAMS
 PG
 A UNIVERSAL RELEASE
 © 1989 UNIVERSAL CITY STUDIOS, INC.

Field of Dreams

An extraordinary story of one man's quest to transform his vision into reality. Kevin Costner stars as Ray Kinsella, a man who finds the courage to believe in his dreams.

Sunday August 23, 1992
 10 pm Perreault Hall
 in Fuller Labs

The Official Newspeak Worcester Map! (Yes, again)



You are here. Take note.



North



Super Shaw's is the biggest Supermarket around. Unfortunately it is too far to walk.



The Greendale Mall offers many stores and is still too far away to walk.



Hopefully you won't have to spend much time here, but this is the WPI Campus Police station.



Big D is the only supermarket within walking distance. Check it out when you have those DAKA blues and are ready to cook your own meal.



The first dot on Highland St. is Theo's, they have good food and decent prices for the college budget. Theo's is a popular WPI hangout for both students and police.



Store 24 is the closest convenience store to campus. It has most everything you need at any hour of the day or night. But beware, convenience does not come free, the prices can be high.



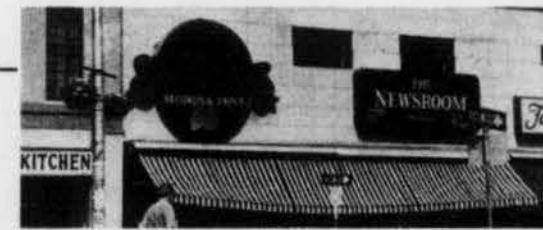
The Boynton is another good place for pizzas and subs. You can sit down or take away.



Although Al Bums is kind of a hike, they have a good selection of used CDs, cassettes and albums.



The bus station is on Myrtle St. (Ho, Hum....)



Strawberries has reasonably priced CDs and cassettes.



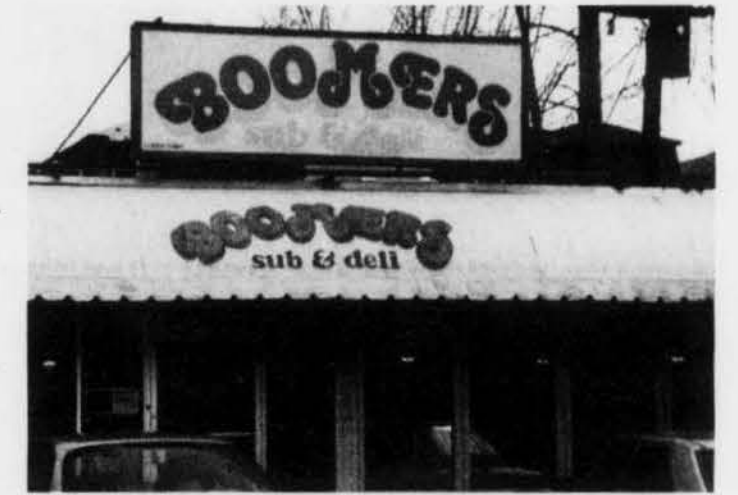
The train station is on Shrewsbury St. just under 290 and just past a gas station. LOOK CLOSELY for the sign, it's easy to miss.



The Acapulco is open till 4 AM on weekends and is good for late night snacks.



Friendly has ice cream to go and sundaes.



Boomers has been voted Best Pizza by WPI students for two years in a row. (They have subs too.)



Spag's on Route 9 in Shrewsbury has everything. DON'T EVEN THINK ABOUT WALKING HERE!!!



Most Fall or Spring concert tours make a stop here at the Worcester Centrum. It is within walking distance.

Photos are courtesy of the Newspeak Photo Archives.

GREEK INFORMATION

Curious about Greek life at WPI?

In 1886 the first fraternity, Phi Gamma Delta, was founded at WPI. The first sorority, Phi Sigma Sigma, appeared in 1977. Since that time, interest in Greek life at WPI has grown tremendously and now totals approximately 35 percent of the entire student population. "Greeks" actively recruit new students to join their system during the fall and spring through a process called "rush".

The decision to join a fraternity or sorority is very personal and should be based on an individual's overall desire to "become Greek" as well as his or her desire to affiliate with one particular chapter. WPI currently has ten rec-

ognized fraternities and three recognized sororities, all of which are "nationals" as opposed to "locals". This means that each fraternity or sorority has a "parent" organization that established its rules and standards. Many of the chapter's headquarters are located in Indianapolis.

The governing bodies of the Greek system are called the Interfraternity Council and the Panhellenic Council. These groups are made up of representatives from every fraternity and sorority and establish the rules and guidelines for the Greek system. Rush rules have been clearly articulated for new students and will be

distributed in the fall for fraternities and during formal rush for sororities.

The Interfraternity Council and Panhellenic Council require that all new students wishing to join the Greek system or who are thinking about it, complete the "Academic Release Form" during academic registration. By signing this form, new students agree to allow the Registrar's Office to identify him or her as being academically eligible to join a fraternity or sorority. This means that new students must be showing "academic progress" which for A term is defined as passing 2/3 units. This process is consistent with the Interfraternity

and Panhellenic Council's desire to support the academic mission of the institute.

New students curious about the WPI Greek system are encouraged to read more about it in the Student Handbook (available through the "emac info system"), visit individual chapters during house tours, and talk to upperclassmen about their personal experiences with the Greek system. Specific questions can be addressed to Tom Schurman, Box 2624, IFC Rush Chairman or Renee Jalbert, Box 938, Panhel Rush Chairperson.

The Interfraternity and Panhellenic Councils welcome new students to WPI.

What have you got to lose?

by Patrick O'Donnell '94 and Jeralyn Clouart '95

"They're going to nail us no matter what we do, so we might as well have fun." Everyone remembers this famous quote from the movie *Animal House*, but now, more than ever, it has something to do with you as freshmen. The decision to join a Fraternity or a Sorority is a difficult one. Don't make that decision blindly. Rush is a fun way to learn about Greek life so you can make an informed choice.

There's a little bit of a difference between Fraternity and Sorority Rush. Individual Fraternities send out calendars of events to tell all prospective Rushees what is going on at each house. Fraternity Rush begins with house tours. Going on these gives the rushee the opportunity to see each house and to see where lots of the brothers live and hang out. Rush events give Rushees the opportunity to meet brothers and get a sneak peek at what each Fraternity is like. By going to these events a Rushee is NOT obligated to join a Fraternity. Even if you go to a house several times and they give you a bid, you are not obligated to sign it. The decision to join is totally up to you.

Sorority Rush is a little more formal. There are three Rush rounds in which Rushees attend parties from each sorority. The parties are a fun way to meet sisters and for them to meet you. After the Rush rounds, each Sorority invites girls that they would like to join their sorority to their preference party. You may get

invited to all of them, but each Rushee may only choose two to attend. After that it's all up to you! If you like a particular Sorority you choose them on your bid card, if not you don't have to do anything. You are NOT obligating yourself to join a Sorority by going through Rush! Then the Sororities match bids, if the choice is mutual, you receive a bid. Keep in mind that the choice is yours!

Take part in Rush so you can get to know more about Fraternities or Sororities first hand. It's a great way to meet people and it gives you the information you need to make the correct decision. Keep an open mind! Remember Rush does not commit you to anything, but not Rushing does.



A scene familiar to most!

NEWS

M*A*S*H

continued from page 1

tified as difficult. These courses may have heavy homework assignments or they may require understanding of new and difficult concepts. Whatever the reason, some courses are more challenging than others. M*A*S*H helps students meet that challenge.

Each study group is guided by a M*A*S*H leader, an undergraduate student who has taken the course before and who, therefore, understands the course material and what the instructor expects. M*A*S*H leaders attend all class lectures, take notes, complete assigned readings and other assignments, and conduct three or four 50-minute M*A*S*H sessions each week. By attending class and demon-

Physics



Chemistry

Calculus

TECH

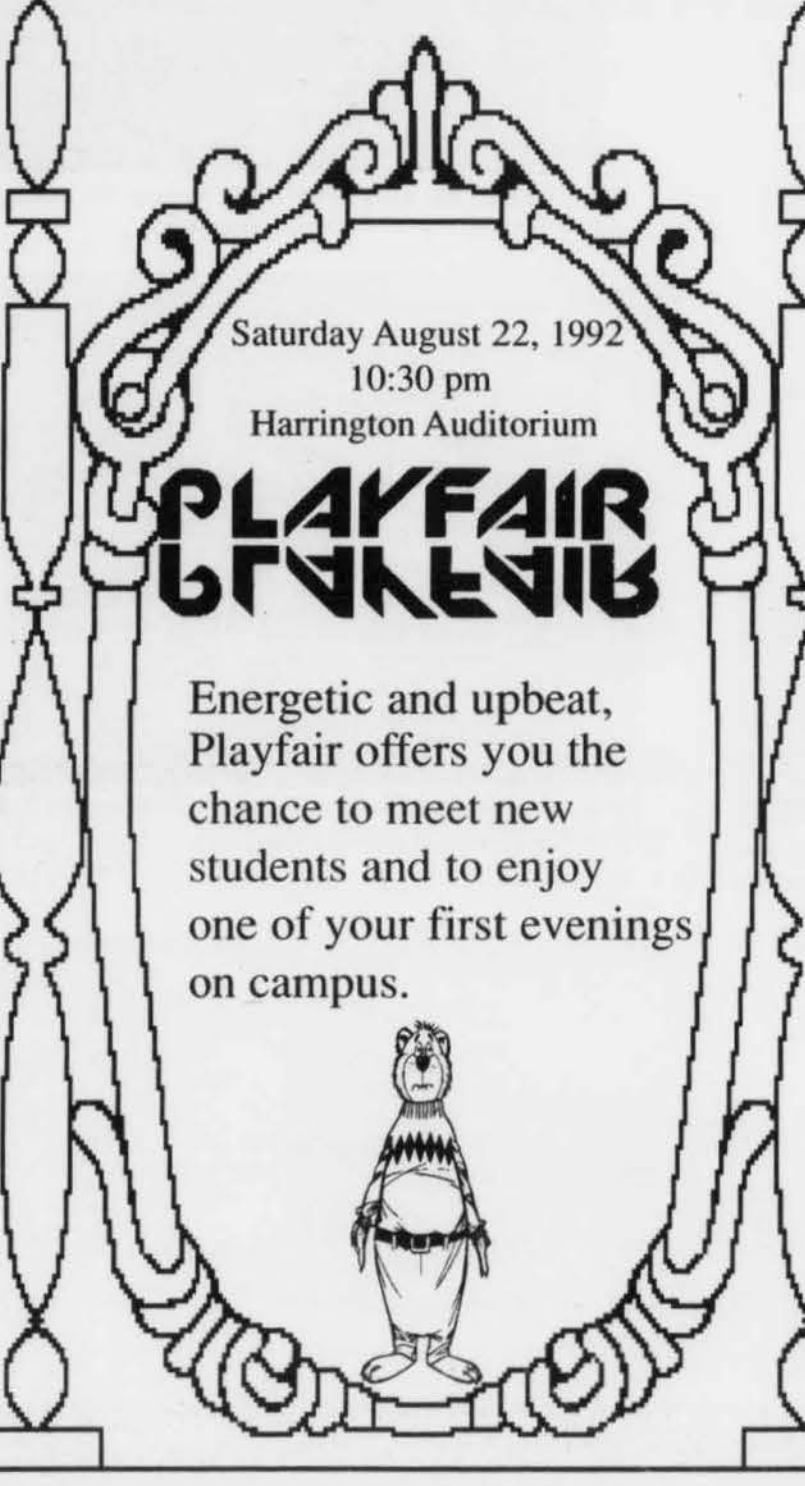


137 Highland Street
752-2133

* PIZZA * SALADS *
* SUBS * SPAGHETTI *
BEST PIZZA ON THE BLOCK!

Large Plain Pizza \$1.00 off!
Small Plain Pizza \$0.50 off!
(Offer not good on deliveries)


FREE DELIVERY!
6 PM - 12 PM



Saturday August 22, 1992
10:30 pm
Harrington Auditorium


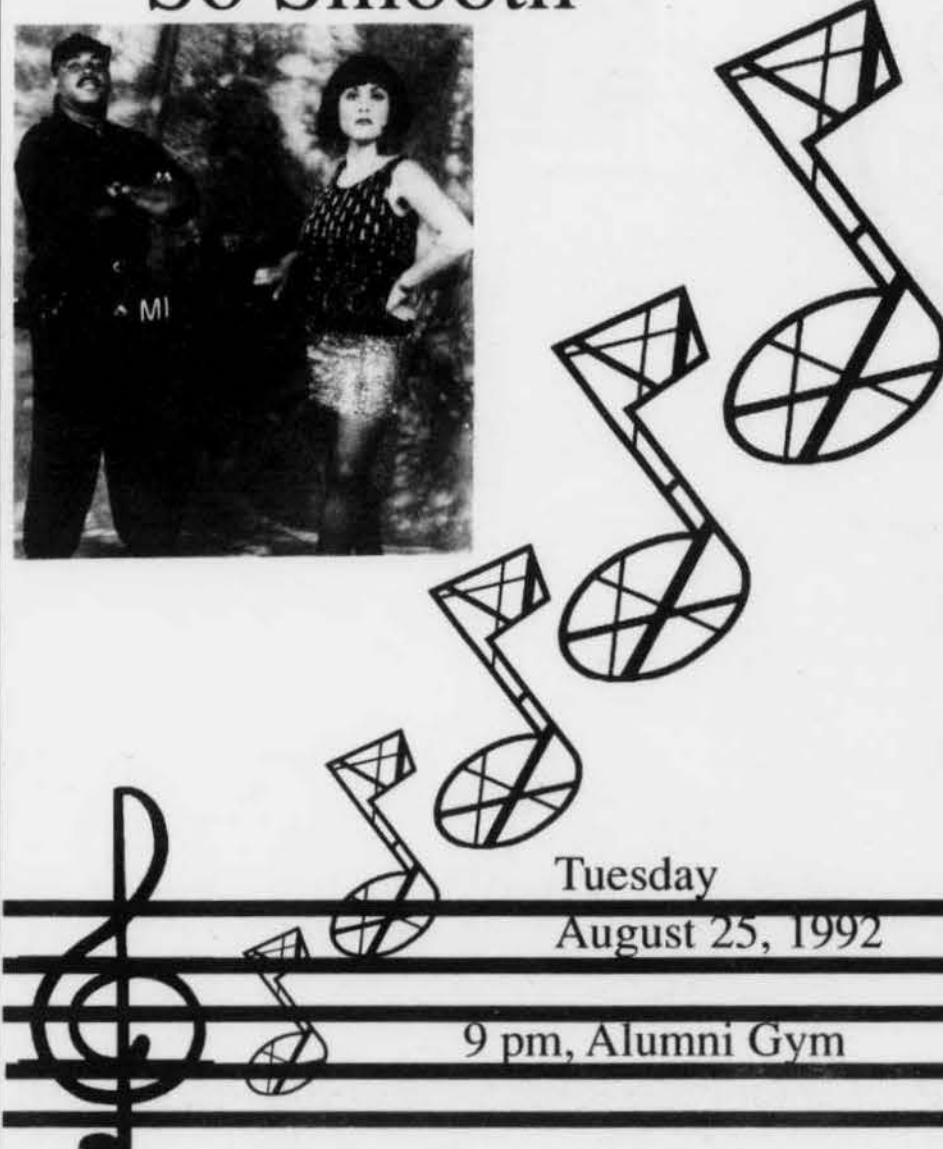
PLAYFAIR ΓΓΑΚΕΝΙΒ

Energetic and upbeat,
Playfair offers you the
chance to meet new
students and to enjoy
one of your first evenings
on campus.



Dance the night away
to the sounds of
music duo

So Smooth

Tuesday
August 25, 1992
9 pm, Alumni Gym

CLUB INFORMATION

What is MASQUE and is it for you?

by Jonathan Stott
Class of '93

The whole point of my being here is to answer the question "What is Masque?"

Masque is one of WPI's largest and most active student organizations. Masque puts on three major theatrical productions a year, plus a smaller production during A-term. In addition, there are two other groups loosely associated with Masque: "Chain Link Fence" and "MW-Rep Theatre". "Chain Link Fence" is an Improv group, similar to Comedy-Channel's "Whose Line is it Anyway," except they have more fun and don't have a network telling them what they can and can't say. "MW-Rep Theatre" is a smaller group that puts on its own shows, independent of Masque and without any external funding. "MW-Rep" is totally student run and managed, and tends to produce shows that are too small to be produced by Masque. Furthermore, since "MW-Rep" is a student run organization, that means its an outlet for people who want to hold a major position, such as director, and wouldn't get the opportunity through Masque.

But enough of that; back to Masque. Masque, as most clubs at WPI, has a budget to cover expenses such as costumes, props, scripts, sets, etc., plus direct income from ticket sales. Masque has a scene shop in the basement of Alden hall with our own tools and hardware that we use to build anything a play requires (with lots of brand new goodies to play with too, thanks to the Alden renovation!) We also work with Lens and Lights (or LnL, as everyone outside of Boynton Hall calls them), to provide lighting and sound for our shows. Yes, it is possible to do audio and lighting work through Masque without being in LnL. This B-Term we will also be working with SocComm to provide publicity, and Masque is designing and helping to build the set for a trio of comedies appearing in Harrington during fall week-end.

So - what kind of stuff do we do... previous shows include "Macbeth", "Feiffer's People", "Cloud Nine", "The Foreigner", "Dial 'M' for Murder", "The Real Inspector Hound", and most recently, Tom Griffin's "The Boys Next Door". Shows for this year include William

Shakespeare's "The Tempest" (B-Term), "New Voices 11" (D-Term), and one other (undecided) play. "New Voices" is a four day theatre festival of student written/directed plays, and this year will be our eleventh annual performance. We accept submissions of plays up until the end of January (from anyone - the judges never even see your name until the plays are accepted), and the best of these will go on to become New Voices 11. The only requirement is that the plays be original, never-before-performed works. Also, every A-Term, we revive the best of the previous year's New

Voices plays for our welcome-back performance. This year, we will be presenting for the entire campus "New Voices 10.5" as a FREE performance on September 11 in Gompeii's.

So, what's required to become involved in this? Not much - we really don't care how much experience you have. As long as you're interested in making theatre at WPI a success you'll have a blast with the rest of us (Hmm.. I don't think I've mentioned cast parties yet - get involved and you'll find out about them REAL quick). We'll have a table at the activi-

ties fair (that's Wednesday September 9), just sign up then, and receive our weekly newsletter and lots of other miscellaneous e-mail. Or, go to the free performance of New Voices 10.5 on September 11 in Gompei's Place, check us out, talk to us and get involved.

Also, watch for the Masque club-corner in Newspeak, for the times and places of auditions, performances, meetings, and other events. Finally, if all else fails, just send us email (masque@wpi.wpi.edu) and we'll get back to you.

Pathways: A literary cataclysm

by Matt Meyer '93
Pathways Editor-In-Chief

Several years ago a medical study of WPI undergrads and alumni revealed that the stringent technical life at Whoopie Tech had a tendency to stagnate and thusly shrink the right



half of the brain. This unique shrinkage would generally cause the center of mass of the cranium to shift to the left. Over time, the shift reveals itself by creating such an imbalance that the victim's head leans curiously to the left like a baffled labrador. This malady is considered to be quite hazardous as it affects ones perspective as well as their balance. Over 250 previously unexplained accidents on campus could be attributed to this condition.

Fear not! There is hope. In order to counteract what has come to be known as the Leisheimer List and prevent a possible widespread outbreak Pathways was invented. Pathways, WPI's one and only Art and Literary magazine, acts as an outlet for students who need to exercise the right half of their brain. Each year the Pathways editorial staff accepts submissions of poetry, prose, short stories,

artwork, and photography (black and white only) and publishes the best of these in its annual (FREE) issue. The only ground rules that apply to submissions are that they must be your own original work and they must be submitted with your name and box number (we will credit your work to an alias if you so

desire). All written submissions are to be typed and should be sent to Pathways at Box 5150 (home of the criminally insane) or through email at Pathways@wpi.wpi.edu.

So if you are tired of polynomials, enraged by R-S flip flops, or for some reason everything seems to be canted to the right, use some of that talent and submit some of your creative inspirations to us. Save yourself from Leisheimer's List - GET OFF YOUR ASS AND BE CREATIVE!!!

If you are interested in joining our editorial staff, check us out at the activities fair and/or contact us at box 5150 or through email.

Lens and Lights

by Gregory Marr
Class of '95

Have you ever wondered what goes on behind the scenes here at WPI at a concert, or a play or a movie? If so then Lens & Lights is for you.

We are a service organization whose business is professional stage lighting, sound, and motion picture projection.

We help light, provide sound, or project movies for almost every entertainment event on campus as well as some off campus events at other schools.

Why join you ask? Well it's a good way to meet 20 new friends. You'll never say "What's there to do around here?" You can stay aware

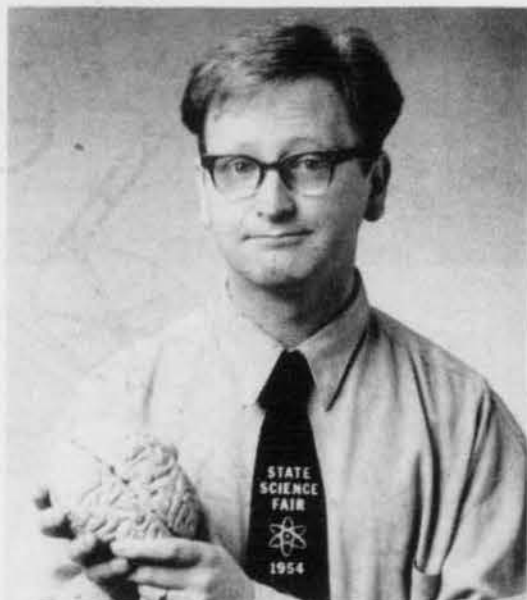
of all the events on campus and you can get into lots of shows for free.

Don't worry if you don't have any experience setting up lighting or sound equipment because most of us started out that way. It's not hard to learn and we can teach you. It can be a lot of fun because you can get a chance to work with all of the really cool expensive lighting and sound equipment we own. Also, the experience that you can gain by being a member of the club can be worth real money in the outside world.

Interested? Send electronic mail to ln@wpi.wpi.edu, or campus mail to Lens & Lights. A weekly schedule of events is usually posted on our office door in the basement of Riley.

Come see the
offbeat humor
of comedian
Mike Bent

Boy Scientist



Monday August 24, 1992
10 pm Alden Memorial



Two Towers After Hours

Presents
Boston's best
acoustic musician:

Ellis Paul

Sunday August 23, 1992
10 pm Gompei's Place
in Riley Hall

Free food, coffee and a great
atmosphere.

B.Y.O.M.(bring your own mug)

INNOCENT BYSTANDER.



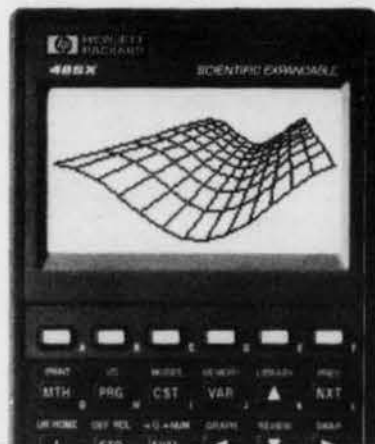
Ad Council A Public Service of the USDA Forest Service and your State Forester.

ONLY YOU CAN PREVENT FOREST FIRES.



It's also hard to believe that you get free software when you buy HP 48 calculators.

There's a lot more than a great calculator waiting for you when you purchase an HP 48SX or an HP 48S between June 1, 1992, and October 31, 1992. You'll get



a bonus book that's good for free software, a free PC link cable and hundreds of dollars back on applications—like electrical and mechanical engineering—memory cards, training tools, games, and HP's infrared printer.

It's a really big offer. Worth more than \$500. And it's going to make your HP 48 calculator even more valuable to you. The free serial cable lets you exchange information with your PC. And the free software disk lets you enter and plot equations easily, do 3D plotting, and analyze polynomials.

Beyond all the bonuses, you'll have the right calculator for your most challenging classes. HP 48 calculators have over 2100 built-in functions and offer a unique combination of graphics and calculus.

Head over to the campus bookstore now. After all, you don't see this kind of deal every day. HP calculators. The best for your success.





"Do I take 'The Microbiology of Potentially Pathogenic Beta-Hemolytic Streptococci.' Or 'The Evolution of the Situation Comedy.' Do I really want to live with Judy the neat freak again. I can't believe I've got until Monday to decide if I'm a Biology or a Theatre major. Have I completely lost it? Will I ever be able to make a decision, again? Wait a minute, just yesterday, I was able to pick a phone company with absolutely no problem... Yes, there is hope."

With AT&T, choosing a phone company is easy. Because when you sign up for AT&T Student Saver Plus, you can pick from a complete line of products and services designed specifically to fit your needs while you're in college. Whatever they may be. Our Reach Out* Plans can save you money on AT&T Long Distance, no matter where and when you call. Call Manager* will separate your AT&T Long Distance calls from



the ones your roommates make. And the AT&T Calling Card makes it easy to call from almost anywhere to anywhere. Also, when you sign up for AT&T, your first call is free**

And with AT&T, you'll get the most reliable long distance service.

AT&T Student Saver Plus. It's the one college decision that's easy to make.

To sign up for AT&T Student Saver Plus, call 1 800 654-0471 Ext. 851.

© 1992 AT&T. *This service may not be available in residence halls on your campus. Must have touch tone telephone and service. **You'll receive one \$3 AT&T L.D. Certificate equivalent to 22 minutes of direct-dialed, coast-to-coast, night and weekend calling based on rates effective 6/8/92. You could get more or fewer minutes depending on where or when you call. Offer limited to one certificate per student.



OPEN
10 A.M. - 11 P.M.
Mon. - Sat.

BOOMERS

sub & deli

93 HIGHLAND STREET WORCESTER

NEXT TO THE JIM DANDY LAUNDROMAT

WELCOME BACK WPI

791-5551
Free Delivery With Minimum Order...

Original Homestyle PIZZA

2nd YEAR in a Row

THANK YOU WPI
For Voting Us # 1 PIZZA
In The Spring, 1992 WPI Poll

•Super Sandwiches - On The Half Loaf
•Charbroiled Burgers & Chicken •Fries & Onion Rings •Homemade Soups •Veggie Pockets •Fresh Garden Salads •Pastas

Fresh Haddock Fish & Chips - Every Friday

Boomers \$2.50
With This Coupon

SMALL CHEESE PIZZA
With this coupon. Limit 1 coupon per customer. Not valid with any other offer. Expires September, 5, 1992.
Boomer's 93 Highland Street, Worc. 791-5551.

TUESDAY'S FROM 5 PM:
BOOMERS PIZZA PARTY NITE
Featuring: Boomers Original Homestyle Cheese Pizza (Small Size) for **Only \$2.50**

CLASSIFIED

Newspeak will run classifieds free for all WPI students, faculty, and staff. Free classifieds are limited to six (6) lines. Ads of a commercial nature and ads longer than six lines must be paid for at the off campus/commercial rate of \$5.00 for the first six lines and 50 cents per additional line.

Classified ads must be paid for in advance.

No information which, in the opinion of the Newspeak editors, would identify an individual to the community will be printed in a personal ad. The editors reserve the right to refuse any ad deemed to be in bad taste or many ads from one group or individual on one subject.

The deadline for ads is noon on the Friday before publication.

All classified ads must be on individual sheets of paper and must be accompanied by the writer's name, address and phone number.

Name _____ Phone _____
Address _____ Total Enclosed \$ _____

Allow only 30 characters per line

Newspeak welcomes the class of 1996.

Where was Ray all day?!

One 20 meg hard drive for sale by Newspeak. Best Offer. 831-5464 or Box 2700. As is.

They forced me into it. (5/5/92-vol20#13)

Welcome to WPI Brian!

WPI Campus Map



Buildings Directory

- 1 HIGGINS HOUSE
Alumni Office
Events Coordinator
Secretary of the Institute
- 2 HARRINGTON AUDITORIUM
Basketball Courts
Harrington Conference Room
Military Science
Racquetball Court
Squash Courts
- 3 ALUMNI GYM
Bowling Alleys
Physical Education/Athletics
Swimming Pool
Weight Room
Wrestling Facility
- 4 ALDEN MEMORIAL AUDITORIUM
Applied Music Division
- 5 HIGGINS LABORATORIES
Center for Firesafety Studies
Center for Laser Holography
Mechanical Engineering Department
- 6 OLIN HALL
Physics Department
- 7 GODDARD HALL
Center for Inorganic Membrane Studies
Chemical Engineering Department
Chemistry Department
- 8 ATWATER KENT
Electrical Engineering Department
Newell Lecture Hall
- 9 SALISBURY LABORATORIES
Biology and Biotechnology Department
Biomedical Engineering Department
Humanities Department
Kinnicutt Lecture Hall
Social Science/Policy Studies Department
- 10 WASHBURN SHOPS AND STODDARD LABORATORIES
Higgins Lecture Hall
Management Department
Management of Advanced Automation Technology (MAAT)
Manufacturing Engineering Applications Center (MEAC)
Nuclear Reactor Facility
School of Industrial Management
- 11 BOYNTON HALL
Academic Advising
Accounting Business Affairs
Admissions (Undergraduate)
Business Affairs/Treasury
Cooperative Education Program
Financial Aid
Graduate & Career Plans.
Office of (OGCP)
Graduate Studies/Research
Office Services
President
Provost
Public Information
Registrar
Student Affairs
Undergraduate Studies
University Relations
- 12 PROJECT CENTER
Interdisciplinary Studies Division
Projects Office
Secretary of the Faculty
Undergraduate Programs
- 13 STRATTON HALL
Human Resources
Mathematical Sciences Department
- 14 GORDON LIBRARY
Archives Room
Seminar Room
- 15 FULLER LABORATORIES
Academic Computing
College Computer Center
Computer Science Department
Instructional Media Center
Perreault Lecture Hall
- 16 KAVEN HALL
Civil Engineering
- 17 35 DEAN STREET
Campus Police
History of Science Society
- 18 SKULL TOMB
(Student Honor Society)
- 19 157 WEST STREET
Counseling and Student Development Center
- 20 19 SCHUSSLER ROAD
Collegiate Religious Center
- 21 20 TROWBRIDGE ROAD
Continuing Education
- 22 27 HACKFELD ROAD
Plant Services
- R1 FOUNDERS HALL
Dining Hall
- R2 INSTITUTE HALL
- R3 SCHUSSLER HOUSE
- R4 SANFORD RILEY HALL
Gomper's Place
- R5 FULLER RESIDENCE CENTER
- R6 28 TROWBRIDGE ROAD
- R7 25 TROWBRIDGE ROAD
- R8 ELLSWORTH RESIDENCE CENTER
Housing and Residential Life
- R9 DANIELS HALL
Bookstore
Central Mail
Dean of Students
Student Activities
- R10 MORGAN HALL
Dining Hall
Food Service
Snack Bar
The Wedge
- R11 STODDARD RESIDENCE CENTER
Health Services
- R12 HACKFELD RESIDENCE