

ON THE SOCIABILITY OF A GAME-PLAYING AGENT:
A SOFTWARE FRAMEWORK AND EMPIRICAL STUDY

by

Morteza Behrooz - mbehrooz@wpi.edu

A Thesis

Submitted to the Faculty of
WORCESTER POLYTECHNIC INSTITUTE
in partial fulfillment of the requirements for the
Degree of Master of Science

in

Computer Science

April 2014

APPROVED

Professor Charles Rich, Thesis Advisor

Professor Candace Sidner, Thesis Advisor

Professor David Brown, Thesis Reader

Professor Craig Wills, CS Department Head

Abstract

The social element of playing games is what makes us play together to enjoy more than just what the game itself has to offer. There are millions of games with different rules and goals; They are played by people of many cultures and various ages. However, this social element remains as crucial. Nowadays, the role of social robots and virtual agents is rapidly expanding in daily activities and entertainment and one of these areas is games. Therefore, it seems desirable for an agent to be able to play games socially, as opposed to simply having the computer make the moves in game application. To achieve this goal, verbal and non-verbal communication should be inspired by the game events and human input, to create a human-like social experience. Moreover, a better social interaction can be created if the agent can change its game strategies in accordance with social criteria. To bring sociability to the gaming experience with many different robots, virtual agents and games, we have developed a generic software framework which generates social comments based on the gameplay semantics. We also conducted a user study, with this framework as a core component, involving the rummy card game and the checkers board game. In our analysis, we observed both subjective and objective measures of the effects of social gaze and comments in the gaming interactions. Participants' gaming experience proved to be significantly more social, human-like, enjoyable and adoptable when social behaviors were employed. Moreover, since facial expressions can be a strong indication of internal state, we measured the number of participants' smiles during the gameplay and observed them to smile significantly more when social behaviors were involved than when they were not.

Acknowledgements

First and foremost, I would like to thank my advisors, Professors Charles Rich and Candace Sidner, whose kind, constant and thoughtful guidance made every stage of this work possible. I express my profound gratitude to Prof. David Brown, my thesis reader, whose valuable insight greatly elevated the quality of this work. I would like to also thank Prof. Tim Bickmore of Northeastern University for allowing me to use their virtual agent (Karen) in my user study. I am really grateful to Prof. Jeanine Skorinko of Worcester Polytechnic Institute for her great help in recruiting study participants. I also extend my gratitude to Prof. Gillian Smith of Northeastern University for her valuable feedback during this research. This work is supported in part by the National Science Foundation under award IIS-1012083. Any opinions, findings, and conclusions or recommendations expressed in this material are those of the authors and do not necessarily reflect the views of the National Science Foundation.

Contents

1	Introduction	1
2	Related Work	2
3	User Study	3
3.1	Experimental Setup	3
3.1.1	Participants	3
3.1.2	Interaction elements	4
3.1.3	Conditions	5
3.1.4	Procedure	5
3.2	Results	8
3.2.1	Questionnaire	8
3.2.2	Smile detection	10
3.2.3	Other results	11
3.3	Discussion	12
4	A Software Framework	13
4.1	Commenting System	14
4.1.1	Comment Library	15
4.1.2	Comment Chooser	15
4.2	Scenarios and Interruptibility	16
5	Conclusions and Future Work	18

Appendices	22
A Detailed questionnaire results	22
B Generic Comment Library	25
C Checkers Comment Library	31
D Rummy Comment Library	36

List of Figures

1	Different gaze directions of the agent	4
2	Complete graphical interface of the games. The text menus (in gray buttons) are offered to the users as options for commenting on the game moves, and also as options for responding to agent’s comments. Agent’s comments and responses are spoken.	6
3	The study setup, showing the touch-enabled PC used by participants and the separate display for the experimenter to run the system.	7
4	In this chart, the Y-axis represent the h values (with a threshold of 50) for all three conditions, while the X-axis contains each study subject (31).	11
5	Framework Architecture. Gray boxes indicate game-specific components while others are generic. Libraries have both generic and game-specific entries. . .	14
6	Sample comment library entries for generic and game specific comments. The <code>madeBy</code> and <code>madeOn</code> properties determine which player is able to use each comment, and on which player’s move, respectively. The <code>response</code> fields in each comment are the response options for the player other than the one making the comment.	16
7	A simple scenario diagram showing a plan for the Self-Deprecating scenario based on <i>Strength</i> move annotation. The plan suggests that before the moment R, the agent should play as strongly as possible with <i>Strength</i> annotation values higher than N. On moment R (asterisk sign), the scenario will suggest <i>bragging</i> commenting attributes to the Comment Library. After moment R, the agent will play weak moves with low <i>Strength</i> annotations (toward M) with a goal of losing before the moment S.	17
8	Reeti, an expressive robot.	19

List of Tables

1	Questionnaire items and categories.	9
2	Questionnaire results, showing the Mean and Standard Deviation ($m(sd)$) in an aggregated analysis over categories and overall for all conditions. $p(x, y)$ shows the p-value from a paired two-tailed t-test between conditions x and y , where NA stands for NoAgent, GO for GazeOnly and GC for GazeComment.	10
3	Mean of h values in three conditions. $p(x, y)$ also shows the p-value from a paired two-tailed t-test between conditions x and y where NA stands for NoAgent, GO for GazeOnly and GC for GazeComment.	11
4	Detailed questionnaire results, showing the Mean (m), Standard Deviation (sd) and Standard Error (se) in 3 conditions. $p(x, y)$ shows the p-value from a (paired) two-tailed t-test between conditions x and y , where NA stands for NoAgent, GO for GazeOnly and GC for GazeComment.	24

1 Introduction

It is no secret: humans love playing games. Humans have figured out a way to create games with every emerging technology in history. In fact, games have often contributed to the expansion and deployment of many of those technologies. Today, there are millions of games with different rules and goals; they are played in many different circumstances by people of different cultures and various ages. However, there is a single element in most of these gaming experiences that goes beyond these differences, an element that makes people laugh while playing games and makes them play together to enjoy more than just what the game itself has to offer: This is the *social* element of playing games.

Nowadays, the role of social robots and virtual agents is rapidly expanding in daily activities and entertainment. One of these areas is games, where people traditionally play even simple card and board games as a means of socialization, especially if not gambling. Therefore, it seems desirable for an agent to be able to play games socially, as opposed to simply having the computer make the moves in game application.

To achieve this goal, verbal and non-verbal communication should be inspired by the game events and human input, to create a human-like social experience. Moreover, a better social interaction can be created if the agent can change its game strategies in accordance with social criteria.

To bring sociability to the gaming experience with many different robots, virtual agents and games, we have developed a generic software framework which generates social comments based on the gameplay semantics. To evaluate our work, we also conducted a user study with this framework as a core component, involving the rummy card game and the checkers board game.

In the following, after laying out the related research, we will describe our study, explaining its setup and procedures, followed by the results and discussions. We will then introduce our framework and describe its architecture and functionality. Lastly, we will draw conclusions and discuss future directions.

2 Related Work

The most closely related work to this research is by Paiva et al. [11, 12, 5], using the iCat robot. They suggest that users' perception of the game increases when the iCat shows emotional behaviors that are influenced by the game state. They also indicate that by using affect recognition, the state and evolution of the game and display of facial expressions by the iCat significantly affects the user's emotional state and levels of engagement. Furthermore, in a study where an iCat observing the game behaves in an empathic manner toward one of two players in a chess game, and in neutral way toward the other, the authors report on higher companionship ratings by the player to whom the robot was empathic. Although Paiva et al. have studied many social and emotional aspects of playing games with social robots, they do not provide a general software framework for creating social gameplay with different games.

McCoy et al. developed *Prom Week* [13], a social simulation game about the interpersonal lives of a group of high school students in the week leading up to their prom. Although in this work the virtual agents are not playing against the user, it clearly shows a successful application of modeling social interactions in games.

Many researchers report that social cues and emotions can make agents appear more believable. For instance, Bickmore et al. [1] report that displaying social cues by virtual agents resulted in agents being more believable in their experiments. Also, Canamero et al. [4] and Ogata et al. [14] conclude that emotions help facilitate more believable human-robot interactions.

González-Pacheco et al. [7] introduced a robot (*Maggie*) for playing games socially. The authors addressed mostly hardware and sensory capabilities and a software platform for controlling them. Therefore, while being useful as a robotic platform, their work did not provide a general software framework for facilitating social interactions during games.

In [18], Van Eck notes that simple games are more suitable than complex games for establishing empathic effects, since the cognitive load on the players in such games is much lower. This observation supports our choice of simple card and board games as the initial

target of our work.

Beyond gaming, there are many contexts in which sociable agents and robots are popular [6], ranging from *Keepon* [9], a minimalistic musical robot particularly useful for treating children with autism, to much more complicated social agents such as *Kismet* [3] or *Leonardo* [2]. Whether it is therapeutic care [16], food delivery [10] or playing with toys [17], social interactions prove to be a crucial aspect of many experiences. In this work, we study such sociability in a game context.

3 User Study

In our user study, a virtual agent capable of speaking comments and performing social gaze behaviors (see Fig. 1), played checkers and rummy with participants. In our hypotheses below, we are exploring the relationships between social behaviors (gaze and comments) and participants' preferences and smiling.

Hypothesis I: Participants will (a) *prefer* and (b) *smile more* playing checkers and rummy with a virtual agent that interacts using *both* social gaze and comments, compared to *either* a virtual agent using *only social gaze* or playing *without* a virtual agent.

Hypothesis II: Participants will (a) *prefer* and (b) *smile more* playing checkers and rummy with a virtual agent that interacts using *only social gaze*, compared to playing *without* a virtual agent.

3.1 Experimental Setup

In the following, we will provide details regarding the experimental setup in which our user study took place, participants recruitment and the experimental procedures.

3.1.1 Participants

There were 31 participants in the study, 12 males and 19 females. The average age of participants was 20.23 with a standard deviation of 3.67. All participants were recruited

using a pool for study participation created and maintained by the Social Science Department of Worcester Polytechnic Institute. All participants were offered course credits for their participation.

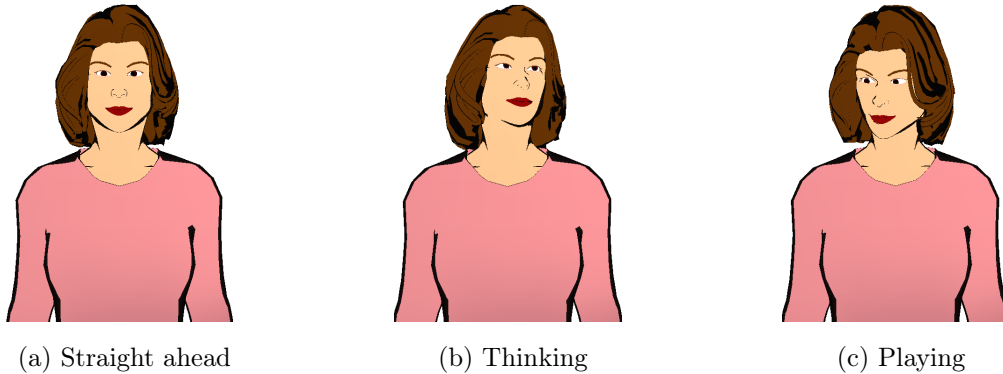


Figure 1: Different gaze directions of the agent

3.1.2 Interaction elements

Our virtual agent is shown in Fig. 1. The agent was always located at the top-right part of the screen (see Fig. 2) and was able to speak and perform gazes in different directions. These gaze directions were straight ahead, thinking and playing. The thinking gaze was used before the agent played a move (for 2 to 3.5 seconds, depending on the game and move), and the playing gaze was used from 0.5 seconds before playing a move to 1 second after. A significant amount of effort was devoted to making the gaze animations and timing smooth and accurate. The rest of the time (e.g., when agent was speaking to user) the agent gazed straight ahead (during which time a face-tracking mode was activated to allow the agent's head to follow participant's face). During both gaze and face-tracking behaviors, the agent's eyes moved in synchrony with its head according to well-known rules for human gaze motions.

The agent was also capable of making social comments about its own or the human player's moves using the IVONA text-to-speech engine. After the agent's comment, the participant is given a chance to respond by choosing one of the text menus appearing on

the right side of the screen. Participants also had a chance to make a social comment on either their own or the agent’s moves, after which the agent would respond with another comment. After each played move, the commenting opportunity was given to one of the players randomly. A maximum of one comment and one optional response was possible each time. The participant had the ability to skip entering a comment, or a response, by either making a move in the game if it was his/her turn, or by selecting “*Your turn*” (Fig. 2a) which always appeared as menu choice when the agent’s turn was coming up. See Sec. 4 for details on the generic framework and how social comments were chosen.

3.1.3 Conditions

The study contained three conditions as follows (in all conditions the gaming area of the interface was identical):

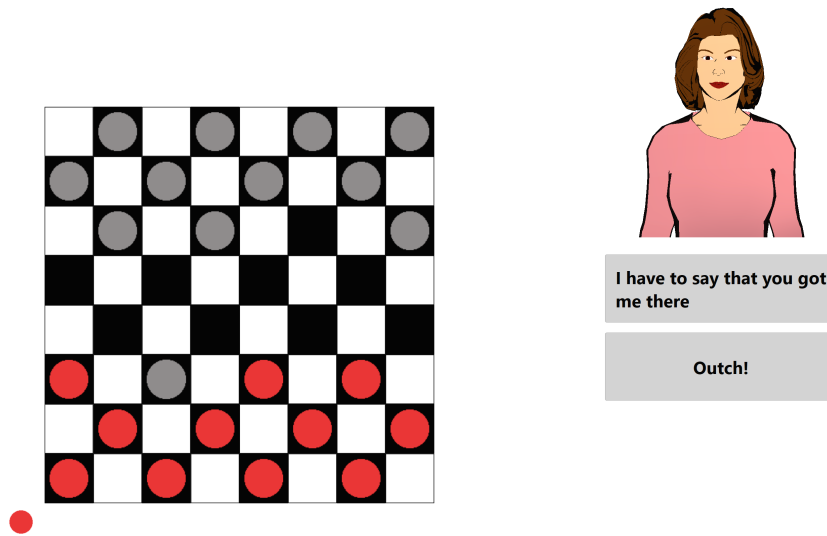
- **NoAgent:** *The screen space occupied by the agent in the other conditions was left blank and there were no social comments;*
- **GazeOnly:** *Agent with social gaze only;*
- **GazeComment:** *Agent with social gaze and comments.*

3.1.4 Procedure

As introduced earlier, we used rummy and checkers games in our study. The study was within-subject. Each participant was assigned one of the two games and played it in all three conditions, in a random order. At the start of the study, the participant was consented by the experimenter and told which game he/she was going to play. The participant was then asked if he/she needed a tutorial about how to play that game. The tutorials were short one-page documents in electronic format that explained the game rules, but did not contain any information about the agent or the conditions. The participant was given time to read the tutorial while the experimenter waited outside.



(a) Rummy



(b) Checkers

Figure 2: Complete graphical interface of the games. The text menus (in gray buttons) are offered to the users as options for commenting on the game moves, and also as options for responding to agent's comments. Agent's comments and responses are spoken.



Figure 3: The study setup, showing the touch-enabled PC used by participants and the separate display for the experimenter to run the system.

The computer used in the study was a touch-screen PC as shown in Fig. 3; participants used the touch input for gameplay. There was an additional display connected to the system which was used by the experimenter to run and manage the system between conditions.

In all conditions, the participant was told that he/she had an unlimited amount of time in order to play one round of the game. However, after 7 minutes, the participant was given the option to decide to continue the game or to move on to the next phase of the study. This was primarily done to avoid the overall study time from being too long. Participants were also told to notify the experimenter by knocking on the closed door, if they finished the game sooner than 7 minutes.

After playing in each condition (during which the experimenter waited outside) the participant was asked to fill out an electronic questionnaire. The questionnaire was identical for all conditions of both games. After completing three conditions and three questionnaires,

the study was concluded.

During the study, we also used the Shore [15] face detection engine to record the occurrences of participants' smiles.

3.2 Results

3.2.1 Questionnaire

The questionnaire consisted of 24 items using a 7-point Likert scale from "strongly disagree" to "strongly agree", coded as 1 to 7, respectively. The items were 5 different categories which were not apparent in the questionnaire. These categories, and their items, can be found in Table 1. The questionnaire items were presented in an identical shuffled order to all participants.

The Working Alliance Inventory [8] is a standard collection of statements used to measure the alliance between the two parties in an interaction. *Alliance* refers to the achievement of a collaborative relationship, meaning that there is a consensus and willingness in both parties to be engaged in the interaction.

Table 4 shows the results for each questionnaire category, along with the overall results, in an aggregated fashion. The answers to the 2 items marked with asterisk in Table 1 were subtracted from 7 because of their phrasings.

Moreover, the results for all of the questionnaire items with the same order and numbering found in Table 1, are shown in a table in Appendix A.

Table 1: Questionnaire items and categories.

Category 1: Working Alliance Inventory (6 questions)
Q1 · I can say that the opponent appreciated my gaming capabilities
Q2 · I believe that the opponent and I respect each other
Q3 · I believe the opponent was playing honestly
Q4 · I was frustrated by my interaction with the opponent in the game *
Q5 · I find our gaming experience with the opponent confusing *
Q6 · I think the opponent in the game and I trusted one another during the game
Category 2: Enjoyable (5 questions)
Q7 · The game was enjoyable
Q8 · I would have played the game longer
Q9 · I laughed during the game
Q10 · The game was fun
Q11 · The game was more fun than other similar computer games I have played
Category 3: Sociable (5 questions)
Q12 · The game was more social than other similar computer games I have played
Q13 · I felt that I had a social experience during the game
Q14 · I found the opponent in the game social
Q15 · I believe the game meant more than just winning to the opponent
Q16 · I believe the game became/was more than just winning for me
Category 4: Human-like and intelligent (3 questions)
Q17 · The game experience was natural and human-like
Q18 · I found the opponent in the game intelligent
Q19 · The game made me feel that I was playing with something more than just a CPU
Category 5: Game adoption (5 questions)
Q20 · I would show this game to my friends
Q21 · I can see myself getting used to playing this game on a daily basis
Q22 · I can see myself playing this game instead of some other more ordinary games
Q23 · I can see this game as a close replacement for playing with friends when that is not possible
Q24 · If I could, I would have asked for the same kinds of interaction in my other activities as the ones I had in the game

Table 2: Questionnaire results, showing the Mean and Standard Deviation (m(sd)) in an aggregated analysis over categories and overall for all conditions. $p(x, y)$ shows the p-value from a paired two-tailed t-test between conditions x and y , where NA stands for NoAgent, GO for GazeOnly and GC for GazeComment.

Category	NoAgent	GazeOnly	GazeComment	$p(\text{NA}, \text{GO})$	$p(\text{GO}, \text{GC})$	$p(\text{NA}, \text{GC})$
1	3.86(1.72)	4.13(1.67)	4.70(1.54)	<.05	≪.001	≪.001
2	4.02(1.74)	3.99(1.77)	5.14(1.49)	.8	≪.001	≪.001
3	2.25(1.59)	2.65(1.42)	4.39(1.81)	≪.001	≪.001	≪.001
4	2.80(1.78)	3.68(1.67)	4.10(1.69)	≪.001	.07	≪.001
5	3.39(1.89)	3.65(1.59)	4.17(1.88)	.06	<.003	≪.001
aggregate	3.33(1.86)	3.64(1.71)	4.54(1.72)	≪.001	≪.001	≪.001

3.2.2 Smile detection

As mentioned earlier, we used the Shore [15] face detection engine to detect participants’ smiles. In this process, Shore reported the “happiness” of the participant’s facial expression as a number in the range of $[0, 100]$, which we recorded every 0.5 seconds. We later counted the number of times (h) that each participant’s happiness value exceeded 50 in each condition.

We chose this threshold approach, which filters out low values in Shore’s reported numbers, as opposed to other possible methods of analysis, such as summing or averaging, to be more certain that the h value better represents smiles that were most likely caused by the game interaction and not, for example, the constant smiles of cheerful people. We did not try to correlate the timing of the smiles with any particular events in the interaction.

The results for a paired two-tailed t-test between the recorded h values in three conditions along with the mean h values can be found in Table 3.

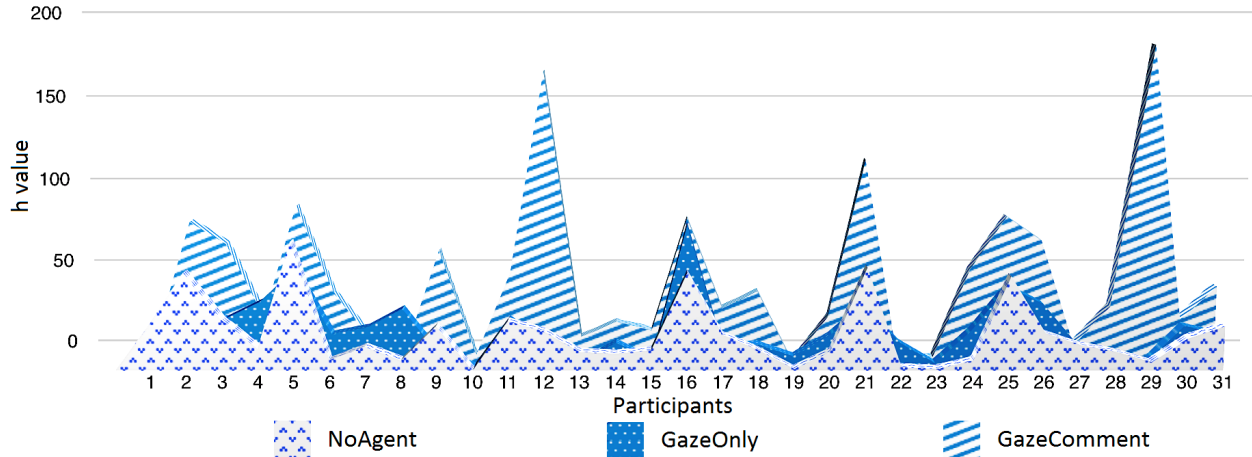


Figure 4: In this chart, the Y-axis represent the h values (with a threshold of 50) for all three conditions, while the X-axis contains each study subject (31).

Table 3: Mean of h values in three conditions. $p(x, y)$ also shows the p-value from a paired two-tailed t-test between conditions x and y where NA stands for NoAgent, GO for GazeOnly and GC for GazeComment.

NoAgent	GazeOnly	GazeComment	$p(\text{NA}, \text{GO})$	$p(\text{GO}, \text{GC})$	$p(\text{NA}, \text{GC})$
21.19	21.38	49.3	.9	<.002	<.001

To illustrate this distribution better, a three-dimensional area chart, showing the h values for every participant and in all conditions, can be found in Fig. 4.

Although we arbitrarily chose a threshold of 50 in our analysis, we observed that for any other threshold, ranging from 5 to 95, the average of h values in the GazeComment condition was consistently 2 to 3 times larger than that of other conditions, with similar p-values to the ones reported in Table 3.

3.2.3 Other results

As stated before, participants had the chance to continue playing the game after 7 minutes. Out of 93 plays in all conditions, 41 cases were finished before 7 minutes, 46 were stopped on 7 minutes and only 6 cases were extended (3 in the GazeOnly condition and 3 in the

GazeComment condition).

When the same analyses were performed for the two individual games (checkers and rummy) separately, the results of questionnaire and smile detection were similar to the combined results.

3.3 Discussion

Hypothesis I-a (comparing preferences for the GazeComment condition to the other two conditions) is strongly supported by the questionnaire results in Table 4, except in the case of comparing the GazeOnly and GazeComment conditions in category 4 (Human-like and intelligent), for which this hypothesis remains a trend. Comparing the NoAgent and GazeOnly conditions in category 4 shows statistical significance. Thus participants' perception of the agent's intelligence is greater in the GazeOnly and GazeComment conditions as compared to NoAgent, even though the agent was not *really* more intelligent, since we did not change its gaming strategies. This increase hints at the importance of sociability when an agent is intended to be perceived as intelligent.

Moreover, Hypothesis I-a is also fully supported in the aggregated analysis of the questionnaire results over all categories (see Table 4).

Hypothesis I-b is strongly supported by the results as well. Smile detection analysis suggests a significant increase in the number of smile occurrences during the gaming interactions in the GazeComment condition, compared to the others.

Hypothesis II-a (comparing the NoAgent and GazeOnly conditions) is supported in the 1st (alliance), 3rd (sociable) and 4th (human-like and intelligent) categories. It remains a trend for the 5th category (game adoption) and unsupported for the 2nd category (enjoyable). On the 5th category, the results suggest that the verbal communications are more important than the agent's presence and social gaze in the participant's willingness to adopt the game. Moreover, the results for the 2nd category underline the importance of verbal communications in this context. Talking is often an important element of an enjoyable social experience, especially in games, where interesting events provoke a need for verbal feedback.

Furthermore, the aggregated analysis of the questionnaire results over all categories strongly supports Hypothesis II-a as well (see Table 4).

Hypothesis II-b is not supported. Smile occurrences do not show any significant difference between the NoAgent and GazeOnly conditions. This can be explained by the fact that gazes and direct looks, when not accompanied by any verbal communications, not only are not fun, but seem rather unpleasant. In fact, between humans, this kind of behavior usually bears a negative message of disengagement or dissatisfaction.

Notably, the smile detection results are consistent with the results from a related item of the questionnaire (the third item in 2nd category of Table 1) where $p(\text{NO}, \text{GC})$ and $p(\text{GO}, \text{GC})$ were both $\ll .001$ and $p(\text{NA}, \text{GO})$ was 0.8.

4 A Software Framework

All of the social comments in our user study were generated using a generic software framework (see Fig. 5) we developed. This framework brings to the gaming experience systematically authored social comments selected based on the semantics of the game. Since the architecture is game-independent, it enables a developer to create new social games for any robot or virtual agent. Note that the gaze behaviors in the study were not generated by this framework.

A High Level Tour of the Framework. The starting point is the *Legal Move Generator* which generates all the possible moves on every agent’s turn. Then, the *Move Annotator* annotates the generated moves with a set of pre-defined annotations that have numeric and boolean values, such as *move strength* (how much a specific move will help the player win) and *novelty* or *bluffing*. If scenarios are used (see Sec. 4.2), the annotated moves will be first filtered by the *Scenario Filter* and then the move with the highest *move strength* will be chosen by the *Move Chooser* to be played by the agent. After each played move, one of the two players will randomly be selected to make a social comment, to which the other player can respond. User’s commenting and responding options are presented as menus on

the screen (see Fig. 2). In order to avoid overwhelming the user, on 25% of the moves, unless the move is significant (e.g., a double jump in checkers) or the game is in a significant state (e.g., win or lose), no comments are made. The *Comment Chooser* chooses a comment from the *Comment Library* based on the latest played move along with the *Game Logic State* (and the *Current Scenario*, if scenarios are used).

An author of a new game using this framework only has to implement the game-specific components in the architecture (gray boxes in Fig. 5) and optionally add extra generic or game-specific comments (and scenarios) to the libraries.

4.1 Commenting System

A main purpose of the framework is to generate social comments based on the semantics of the gameplay. The comment generation is considered to be the main functionality of our

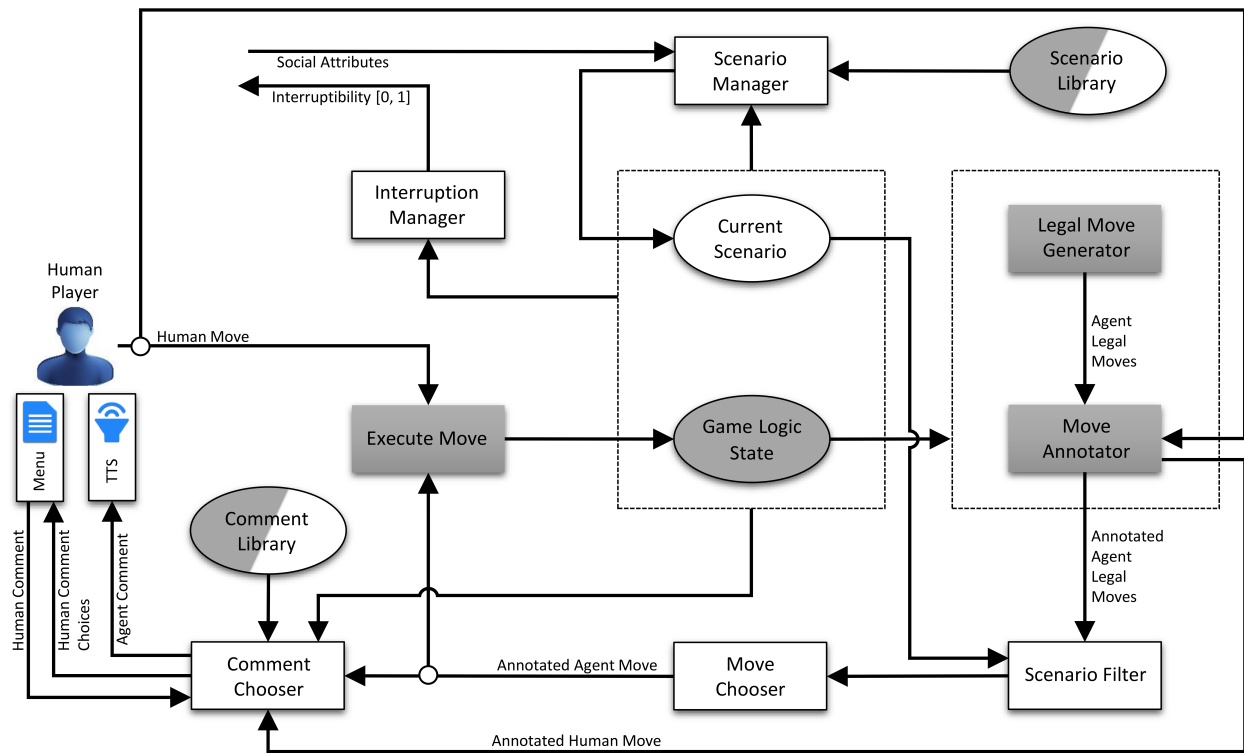


Figure 5: Framework Architecture. Gray boxes indicate game-specific components while others are generic. Libraries have both generic and game-specific entries.

framework as the importance of it was also confirmed by our user study’s results. This process involves the *Comment Library* and the *Comment Chooser*, which are explained below.

4.1.1 Comment Library

The *Comment Library* contains social comments authored in XML format. Each comment includes a set of attributes. Comment attributes are used to determine the best situation in which to use the comment. These attributes have boolean, numerical and string values. Examples include *competitiveness*, *regret*, *compliment*, *offensive* and *brag*. The *gameName* attribute restricts a comment to a specific game; the *gameType* attribute restricts a comment to a specific type of game such as *card* or *board*. A sample of the comment library entries, for both generic and game-specific kinds, can be found in Fig. 6. All of the comment libraries used in our study, generic comment library, checker’s and rummy’s comment libraries, can be found in Appendices B, C and D respectively.

4.1.2 Comment Chooser

This component chooses an agent comment or choices for the user comment menu, in response to the most recent game move or comment. For commenting on a move, an algorithm finds the best matches for the current stage of the game out of all the comment library items using the annotations of the move and the game logic state (as well as the current scenario, in case scenarios are used). These comments must have the maximum similarity in their attributes to the most recent move’s annotations and should also match certain information from the game state, such as if the game is close to the end or there are only a few cards left for a specific player. If multiple comments match the game state criteria and have equal number of matching attributes to the most recent move’s annotations (with a margin or threshold for numeric values), then in case of the agent, one comment, or in case of the user, at most three commenting options are randomly chosen among the candidates. The *Comment Chooser* will initially look only among the comments with matching *gameName* and then *gameType* attributes in order to be as specific as possible.

```

<comment competitiveness='0.2' tags="askHand" gameType="card" madeBy="agent" madeOn="humanMove">
    <content>How is your hand?</content>
    <response>Good!</response>
    <response>Not gonna tell you!</response>
    <response>Terrible</response>
</comment>
<comment competitiveness='0.3' tags="agentFewCardsLeft" gameType="card" madeBy="human" madeOn="agentMove">
    <content>Oh you got only a few cards left!</content>
    <response>Do not worry, too soon to tell</response>
    <response>Haha, I am gonna win</response>
</comment>
<comment competitiveness='0.8' tags="agentMeld/brag" gameName="rummy" madeBy="agent" madeOn="agentMove">
    <content>And that's how you make a meld!</content>
    <response>Well, wait for mine!</response>
    <response>Yes that was nice!</response>
</comment>
<comment competitiveness='0.7' tags="humanMultipleCapture" gameName="checkers" madeBy="human"
madeOn="humanMove">
    <content>Wow! I seem to love jumping!</content>
    <response>Yea, you got me there!</response>
    <response>Oh Come on!</response>
    <response>Nice set of moves</response>
</comment>
<comment moveStrength='0.7' competitiveness='0.1' tags="humanMultipleCapture" gameType="generic"
madeBy="agent" madeOn="humanMove">
    <content>I should say, you do play very well!</content>
    <response>Well, try to learn!</response>
    <response>Thank you, you do too</response>
</comment>

```

Figure 6: Sample comment library entries for generic and game specific comments. The `madeBy` and `madeOn` properties determine which player is able to use each comment, and on which player's move, respectively. The `response` fields in each comment are the response options for the player other than the one making the comment.

4.2 Scenarios and Interruptibility

This section describes two mechanisms in the framework that were not utilized in our study, but we think may be useful in other applications that include longer-term use of our system.

Scenarios introduce the capability to not only control the verbal interaction in the game,

but to also change the agent’s gaming strategies in order to increase its sociability. A scenario includes a plan for choosing moves with specific kinds of annotations at different stages of its progress. This plan can be based on different move annotations explained earlier. Thus, the agent can, for example, start the game strongly or weakly to control the suspense. Scenarios can also generate attributes for the *Comment Chooser* to enforce a desired kind of comment that fits the scenario. For example, the agent can follow a *Self-Deprecating Humor* scenario in which it starts the game strongly and then loses on purpose after generating comments with the *bragging* attribute to create a humorous experience for the user or to boost the confidence in a novice player. A simple diagram showing the gaming plan for such scenario based only on the *Move Strength* annotation can be found in Fig. 7.

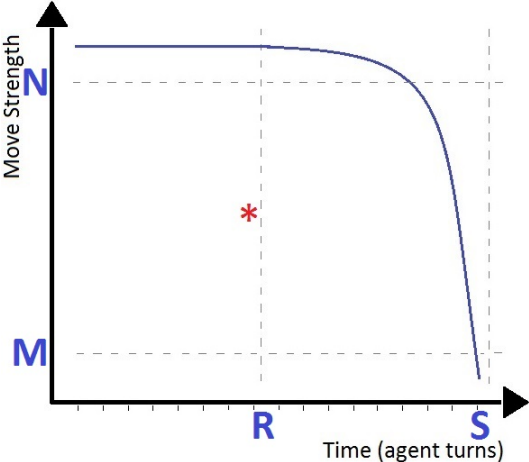


Figure 7: A simple scenario diagram showing a plan for the Self-Deprecating scenario based on *Strength* move annotation. The plan suggests that before the moment R, the agent should play as strongly as possible with *Strength* annotation values higher than N. On moment R (asterisk sign), the scenario will suggest *bragging* commenting attributes to the Comment Library. After moment R, the agent will play weak moves with low *Strength* annotations (toward M) with a goal of losing before the moment S.

In Fig. 5 the *Current Scenario* is selected by the *Scenario Manager* from the *Scenario Library* at the the start of every session. This selection is made based on a set of *Social Attributes* that are imported from outside of the framework. Thus scenarios can be used to

achieve social goals in gameplay.

Interruptibility is continuously reported as a numeric value in $[0, 1]$, where a higher value is an indication of the current moment being more appropriate for pausing the game, and, for example, initiating social chit-chat (generating such chit-chat is not part of this framework). For instance, when there is nothing significant about the current game state, this value is closer to 1, whereas if a player is about to win, it is closer to 0. This functionality can be used for a variety of purposes from applications that need to start general social talks based on other criteria than game in the middle of playing, to the applications that need to perform multitasking during the gameplay and want to switch to another context.

5 Conclusions and Future Work

Our results suggest that there is a great potential in bringing sociability to the gaming interactions of virtual agents and robots, and that we can do so in a systematic way, based on the semantics of the game. We observed that this sociability significantly improved the gaming experience for users and also caused the agent to be perceived as more intelligent.

This work offers two main contributions. First, we designed and developed a generic software framework which aims at enabling many virtual agents and robots to play games socially in the future. Second, in order to apply and evaluate our framework, we conducted a user study, during which we observed both subjective and objective measures of the effects of social gaze and comments. The gaming interactions proved to be significantly more social, human-like, intelligent, enjoyable and adoptable when social behaviors were employed. Moreover, the participants showed increased alliance [8] with a social gaming opponent. Furthermore, since facial expressions can be a strong indication of internal state, we measured the number of participants' smiles during the gameplay and observed them to smile significantly more times when social behaviors were involved than when they were not.

A main limitation of our work may be type of games used. Some more social but highly verbal games, such as charades, are perhaps beyond this approach. However, more complex games than rummy and checkers, such as Risk or Monopoly, would be worthwhile exploring



Figure 8: Reeti, an expressive robot.

in this framework.

One interesting future direction for this work is to use emotion modeling techniques (as in [12]) for generating our social comments, so that they are able to make use of the relation between different emotional states of the users and emotional expressions of the agent, in the presence of varying gaming events. This direction will be able to take good advantage of the scenario functionality of our framework (see Sec. 4.2). Furthermore, this work could be expanded for games involving more players, including one or more agents. Lastly, using an expressive robot (e.g., Reeti in Fig. 8) could also lead to new opportunities.

References

- [1] Timothy W Bickmore and Rosalind W Picard. Establishing and maintaining long-term human-computer relationships. *ACM Transactions on Computer-Human Interaction*, 12(2):293–327, 2005.
- [2] Cynthia Breazeal, Guy Hoffman, and Andrea Lockerd. Teaching and working with robots as a collaboration. In *Proc. of the Third Int. Joint Conf. on Autonomous Agents and Multiagent Systems-Volume 3*, pages 1030–1037. IEEE Computer Society, 2004.
- [3] Cynthia Breazeal and Brian Scassellati. A context-dependent attention system for a social robot. volume 255, page 3, 1999.
- [4] Lola Cañamero and Jakob Fredslund. I show you how I like you - Can you read it in my face? *Systems, Man and Cybernetics, Part A: Systems and Humans, IEEE Transactions on*, 31(5):454–459, 2001.
- [5] Ginevra Castellano, Iolanda Leite, André Pereira, Carlos Martinho, Ana Paiva, and Peter W McOwan. It’s all in the game: Towards an affect sensitive and context aware game companion. In *3rd Int. Conf. on Affective Computing and Intelligent Interaction*, pages 1–8. IEEE, 2009.
- [6] Terrence Fong, Illah Nourbakhsh, and Kerstin Dautenhahn. A survey of socially interactive robots. *Robotics and autonomous systems*, 42(3):143–166, 2003.
- [7] Víctor Gonzalez-Pacheco, Arnaud Ramey, F Alonso-Martin, A Castro-Gonzalez, and Miguel A Salichs. Maggie: A social robot as a gaming platform. *Int. Journal of Social Robotics*, 3(4):371–381, 2011.
- [8] Adam O. Horvath and Leslie S. Greenberg. Development and validation of the working alliance inventory. *Journal of Counseling Psychology*, 36(2):223–233, 1989.
- [9] Hideki Kozima, Marek P Michalowski, and Cocoro Nakagawa. Keepon. *Int. Journal of Social Robotics*, 1(1):3–18, 2009.

- [10] Min Kyung Lee, Jodi Forlizzi, Paul E Rybski, Frederick Crabbe, Wayne Chung, Josh Finkle, Eric Glaser, and Sara Kiesler. The Snackbot: Documenting the design of a robot for long-term human-robot interaction. In *Int. Conf. on Human-Robot Interaction*, pages 7–14. IEEE, 2009.
- [11] Iolanda Leite, Carlos Martinho, André Pereira, and Ana Paiva. iCat: an affective game buddy based on anticipatory mechanisms. In *Proc. of the 7th int. Joint Conf. on Autonomous Agents and Multiagent Systems*, pages 1229–1232, 2008.
- [12] Iolanda Leite, André Pereira, Carlos Martinho, and Ana Paiva. Are emotional robots more fun to play with? In *The 17th IEEE Int. Symposium on Robot and Human Interactive Communication*, pages 77–82. IEEE, 2008.
- [13] Josh McCoy, Mike Treanor, Ben Samuel, Michael Mateas, and Noah Wardrip-Fruin. Prom week: Social physics as gameplay. In *Proc. of the 6th Int. Conf. on Foundations of Digital Games*, pages 319–321. ACM, 2011.
- [14] Tetsuya Ogata and Shigeki Sugano. Emotional communication robot: Wamoeba-2r emotion model and evaluation experiments. In *Proc. of the Int. Conf. on Humanoid Robots*, 2000.
- [15] Tobias Ruf et al. Face detection with the sophisticated high-speed object recognition engine (SHORE). In *Microelectronic Systems*, pages 243–252. Springer, 2011.
- [16] Takanori Shibata. Importance of physical interaction between human and robot for therapy. In *Universal Access in Human-Computer Interaction. Applications and Services*, pages 437–447. Springer, 2011.
- [17] Luc Steels and Frederic Kaplan. Aibo’s first words: The social learning of language and meaning. *Evolution of communication*, 4(1):3–32, 2002.
- [18] Richard Van Eck and IGI Global. *Gaming and cognition: Theories and practice from the learning sciences*. Information Science Reference, 2010.

Appendices

A Detailed questionnaire results

This appendix contains detailed results for all questionnaire results in the user study.

Item	Group	NoAgent	GazeOnly	GazeComment	p(NA, GO)	p(GO, GC)	p(NA, GC)
Q1	1	m: 2.71	m: 3.30	m: 4.97	0.07	<<0.001	<<0.001
		sd: 1.53	sd: 1.56	sd: 1.60			
		se: 0.28	se: 0.28	se: 0.29			
Q2	1	m: 3.06	m: 3.90	m: 4.45	<0.01	0.1	<0.002
		sd: 1.67	sd: 1.42	sd: 1.57			
		se: 0.30	se: 0.26	se: 0.28			
Q3	1	m: 4.45	m: 4.58	m: 5.32	0.7	<0.05	0.02
		sd: 1.73	sd: 1.80	sd: 1.45			
		se: 0.30	se: 0.28	se: 0.30			
Q4	1	m: 2.48	m: 2.42	m: 2.39	0.8	0.9	0.8
		sd: 1.56	sd: 1.57	sd: 1.56			
		se: 0.28	se: 0.28	se: 0.28			
Q5	1	m: 2.10	m: 2.68	m: 2.61	0.1	0.9	0.2
		sd: 1.30	sd: 1.78	sd: 1.43			
		se: 0.23	se: 0.32	se: 0.26			
Q6	1	m: 3.51	m: 4.13	m: 4.48	0.08	0.2	<0.01
		sd: 1.43	sd: 1.65	sd: 1.50			
		se: 0.26	se: 0.30	se: 0.27			
Q7	2	m: 4.71	m: 4.71	m: 5.35	1	0.06	<0.05
		sd: 1.42	sd: 1.40	sd: 1.05			
		se: 0.25	se: 0.34	se: 0.19			

Q8	2	m: 4.19 sd: 1.80 se: 0.32	m: 4.19 sd: 1.87 se: 0.34	m: 5.13 sd: 1.67 se: 0.30	1	0.07	<0.02
Q9	2	m: 2.77 sd: 1.69 se: 0.30	m: 2.68 sd: 1.74 se: 0.31	m: 5.10 sd: 1.40 se: 0.25	0.8	<<0.001	<<0.001
Q10	2	m: 4.90 sd: 1.19 se: 0.21	m: 4.65 sd: 1.52 se: 0.27	m: 5.39 sd: 1.52 se: 0.27	0.2	0.06	0.1
Q11	2	m: 3.52 sd: 1.69 se: 0.30	m: 3.74 sd: 1.57 se: 0.28	m: 4.71 sd: 1.70 se: 0.30	0.5	0.03	<0.002
Q12	3	m: 2.03 sd: 1.49 se: 0.27	m: 2.48 sd: 1.34 se: 0.24	m: 4.90 sd: 1.74 se: 0.31	0.07	<<0.001	<<0.001
Q13	3	m: 1.97 sd: 1.59 se: 0.27	m: 2.48 sd: 1.31 se: 0.24	m: 4.39 sd: 1.73 se: 0.31	<0.02	<<0.001	<<0.001
Q14	3	m: 1.80 sd: 1.33 se: 0.24	m: 2.39 sd: 1.36 se: 0.24	m: 4.90 sd: 1.64 se: 0.29	0.05	<<0.001	<<0.001
Q15	3	m: 2.55 sd: 1.63 se: 0.29	m: 3.81 sd: 1.38 se: 0.25	m: 3.94 sd: 1.90 se: 0.34	0.3	<0.005	<0.002
Q16	3	m: 2.90 sd: 1.78 se: 0.32	m: 3.10 sd: 1.64 se: 0.29	m: 3.81 sd: 1.83 se: 0.33	0.5	0.08	<0.02

		m: 2.65	m: 3.58	m: 3.81			
Q17	4	sd: 1.91	sd: 1.75	sd: 1.72	<0.03	0.6	<0.008
		se: 0.34	se: 0.31	se: 0.31			
		m: 3.35	m: 4.06	m: 4.30			
Q18	4	sd: 1.64	sd: 1.57	sd: 1.55	<0.03	0.5	<0.007
		se: 0.30	se: 0.28	se: 0.28			
		m: 2.39	m: 3.39	m: 4.19			
Q19	4	sd: 1.71	sd: 1.67	sd: 1.82	<0.01	0.1	<<0.001
		se: 0.31	se: 0.30	se: 0.33			
		m: 4.03	m: 4.03	m: 4.65			
Q20	5	sd: 1.87	sd: 1.52	sd: 1.64	1	0.08	0.09
		se: 0.34	se:0.27	se: 0.30			
		m: 3.87	m: 3.71	m: 4.16			
Q21	5	sd: 1.84	sd: 1.60	sd: 1.93	0.5	0.2	0.4
		se: 0.33	se: 0.29	se: 0.35			
		m: 3.30	m: 3.65	m: 4.29			
Q22	5	sd: 1.88	sd: 1.58	sd: 1.92	1	<0.06	<0.02
		se: 0.34	se: 0.28	se: 0.34			
		m: 3.16	m: 3.61	m: 3.68			
Q23	5	sd: 1.85	sd: 1.69	sd: 1.99	0.17	0.89	0.19
		se: 0.33	se: 0.30	se: 0.36			
		m: 2.61	m: 3.26	m: 4.10			
Q24	5	sd: 1.80	sd: 1.57	sd: 1.90	0.09	0.05	<0.002
		se: 0.32	se: 0.28	se: 0.34			

Table 4: Detailed questionnaire results, showing the Mean (m), Standard Deviation (sd) and Standard Error (se) in 3 conditions. $p(x, y)$ shows the p-value from a (paired) two-tailed t-test between conditions x and y , where NA stands for NoAgent, GO for GazeOnly and GC for GazeComment.

B Generic Comment Library

This appendix contains shows the generic comment library of our framework.

Listing 1: Generic comment library

```
1 <?xml version="1.0"?>
2
3 <!--
4   THE GENERIC COMMENT LIBRARY FOR SOCIAL GAMEPLAY FRAMEWORK
5   AUTHOR: MORTEZA BEHROOZ
6   WORCESTER POLYTECHNIC INSTITUTE
7 -->
8
9 <!--
10  > Attributes brief description:
11  - strength: determines how much of a strong move should it be,
12  the move which this comment is being made for, human's or agent's.
13  - competitiveness: how competitive the comment sounds.
14  - tags: the social tags which comment carries.
15  - gameType: if a specific type of game the comment is made for.
16  - gameName: if a specific game the comment is made for.
17  - madeOn: to be made on agent's move, human's or both.
18
19  > agent and human sections contain comments which should
20  be made by each of them.
21
22  PLEASE REFER TO SOCIAL GAMEPLAY FRAMEWORK DOCUMENTS FOR FURTHER
23  INFORMATION.
24 -->
25 <comments>
26
27   <agent>
28     <comment strength='0.5' competitiveness='0.3' tags="compliment"
29       gameType="generic" madeOn="human">
```


29 <content>I should say, you do play very well</content>
30 <response>Thank you, you do too</response>
31 <response>Thanks, you can learn!</response>
32 <response>You too</response>
33 </comment>
34 <comment strength='0.5' competitiveness='0.5' tags="brag" gameType="generic" madeOn="human">
35 <content>Now my turn!</content>
36 <response>Show me what you can do!</response>
37 <response>Well go ahead</response>
38 <response>Good</response>
39 </comment>
40 <comment strength='0.5' competitiveness='0.3' tags="compliment" gameType="generic" madeOn="agent">
41 <content>That was the best I could do</content>
42 <response>It was pretty good</response>
43 <response>I know, you are tricky!</response>
44 <response>But watch me!</response>
45 </comment>
46 <comment strength='0.5' competitiveness='0.3' tags="brag" gameType="generic" madeOn="both">
47 <content>I am in this to win</content>
48 <response>Well do your best</response>
49 <response>I won't let you</response>
50 <response>It's just a game</response>
51 </comment>
52 <comment strength='0.6' competitiveness='0.7' tags="brag/offense" gameType="generic" madeOn="both">
53 <content>Humans are intelligent but robots are geniuses</content>
54 <response>Oh really? tell me, who made you?</response>
55 <response>How intelligent can a toaster be anyway?</response>
56 <response>Bragging won't get you to win Madam agent</response>
57 </comment>

```

58     <comment strength='0.6' competitiveness='0.8' tags="brag/offense"
        gameType="generic" madeOn="both">
59         <content>I have Intel inside , you have a cheese burger</content>
60         <response>Don't forget the toppings , I had jalapeno</response>
61         <response>At least I eat!</response>
62         <response>It was so delicious , you should , oh wait , you can't</
            response>
63     </comment>
64     <comment strength='0.5' competitiveness='0.3' tags="compliment"
        gameType="generic" madeOn="both">
65         <content>I love playing games</content>
66         <response>Me too</response>
67         <response>It is fun to play with you</response>
68         <response>Good</response>
69     </comment>
70     <comment competitiveness='0.2' tags="compliment" gameType="generic"
        gameState="agentWon">
71         <content>I won but you played well too</content>
72         <response>Congratulations</response>
73         <response>Thanks</response>
74         <response>I think you need to be tested again!</response>
75     </comment>
76
77     <comment competitiveness='0.3' tags="compliment" gameType="generic"
        gameState="humanWon">
78         <content>Nice you won</content>
79         <response>Thanks</response>
80         <response>Well then learn from me!</response>
81         <response>Good game</response>
82     </comment>
83
84     <comment competitiveness='0.4' tags="compliment" gameType="generic"
        gameState="tie">
85         <content>Well well well , looks like a tie</content>

```

86 <response>So we have to play again</response>

87 <response>It does!</response>

88 <response>Good game</response>

89 </comment>

90 <comment competitiveness='0.3' tags="compliment" gameType="generic"
 gameState="tie">

91 <content>Nice tie, nice game</content>

92 <response>Yes good game</response>

93 <response>Let's play again then!</response>

94 </comment>

95

96 </agent>

97

98 <human>

99

100 <comment strength='0.5' competitiveness='0.2' tags="compliment"
 gameType="generic" madeOn="agent">

101 <content>You do play very well</content>

102 <response>Thank you very much, you too</response>

103 <response>I learn from smart people like you</response>

104 <response>Such encouragement to hear that!</response>

105 </comment>

106

107 <comment strength='0.8' competitiveness='0.5' tags="brag" gameType=""
 generic" madeOn="human">

108 <content>Now did you see that?</content>

109 <response>Yes. it was good</response>

110 <response>Don't get so impressed with yourself. It wasn't so great.
 </response>

111 <response>Not bad, not bad at all</response>

112 </comment>

113 <comment strength='0.5' competitiveness='0.3' tags="compliment"
 gameType="generic" madeOn="both">

114 <content>I like playing with you </content>

115 <response>Then we should play more! </response>
116 <response>Thanks, I like it too </response>
117 <response>I am very happy to hear that </response>
118 </comment>
119
120 <comment competitiveness='0.3' tags="compliment" gameType="generic"
 gameState="humanWon">
121 <content>I finally win. Good game.</content>
122 <response>Congratulations</response>
123 <response>Good game</response>
124 <response>I think you need to be tested again</response>
125 </comment>
126 <comment competitiveness='0.4' tags="compliment" gameType="generic"
 gameState="humanWon">
127 <content>Did you see that? I won!</content>
128 <response>Congratulations</response>
129 <response>Take it easy. It's just a game</response>
130 <response>I think you need to be tested again</response>
131 </comment>
132
133 <comment competitiveness='0.6' tags="brag" gameType="generic"
 gameState="agentWon">
134 <content>You did win, but need to be tested again.</content>
135 <response>Well, Ok</response>
136 <response>You played well too</response>
137 </comment>
138 <comment competitiveness='0.8' tags="brag" gameType="generic"
 gameState="agentWon">
139 <content>I just let you win, you know</content>
140 <response>Oh really? Sure</response>
141 <response>Of course</response>
142 <response>Well that calls for a rematch</response>
143 </comment>

```
144     <comment competitiveness='0.1' tags="compliment" gameType="generic"
      gameState="agentWon">
145         <content>You won, nice!</content>
146         <response>Thanks!</response>
147         <response>You should try again</response>
148     </comment>
149     <comment competitiveness='0.3' tags="compliment" gameType="generic"
      gameState="tie">
150         <content>Finally, a tie!</content>
151         <response>So we have to play again</response>
152         <response>Yes, tie</response>
153         <response>Good game</response>
154     </comment>
155     <comment competitiveness='0.1' tags="compliment" gameType="generic"
      gameState="tie">
156         <content>Nice tie, nice game</content>
157         <response>Yes good game</response>
158         <response>Should play again then</response>
159     </comment>
160 </human>
161
162 </comments>
```

C Checkers Comment Library

This appendix contains the game-specific comment library for the checkers game, used in our study.

Listing 2: Checkers comment library

```
1 <?xml version="1.0"?>
2
3 <!--
4   THE GAME SPECIFIC COMMENT LIBRARY FOR SOCIAL GAMEPLAY FRAMEWORK
5   AUTHOR: MORTEZA BEHROOZ
6   WORCESTER POLYTECHNIC INSTITUTE
7 -->
8
9 <!--
10  > Attributes brief description:
11  - strength: determines how much of a strong move should it be,
12  the move which this comment is being made for, human's or agent's.
13  - competitiveness: how competitive the comment sounds.
14  - tags: the social tags which comment carries.
15  - gameType: if a specific type of game the comment is made for.
16  - gameName: if a specific game the comment is made for.
17  - madeOn: to be made on agent's move, human's or both.
18
19  > agent and human sections contain comments which should
20  be made by each of them.
21
22  PLEASE REFER TO SOCIAL GAMEPLAY FRAMEWORK DOCUMENTS FOR FURTHER
23  INFORMATION.
24
25 <comments>
26
27  <agent>
```

```

28     <comment competitiveness='0.3' tags="agentCrown/compliment" gameType="
        board" gameId="checkers" madeOn="agent">
29     <content>Crowned! Yes!</content>
30     <response>Do not be so sure!</response>
31     <response>Nice!</response>
32     <response>That won't get you anywhere.</response>
33 </comment>
34 <comment competitiveness='0.3' tags="agentCaptureALot" gameType="board
        " gameId="checkers" madeOn="agent">
35     <content>Wow! I seem to love jumping!</content>
36     <response>Yes! I see!</response>
37     <response>Oh, C'mon!</response>
38     <response>Nice moves</response>
39 </comment>
40 <comment competitiveness='0.1' tags="humanCrown" gameType="board"
        gameId="checkers" madeOn="human">
41     <content>You crowned, Nice!</content>
42     <response>Yup!</response>
43     <response>Haha, let's see where it takes me</response>
44     <response>It's nothing big</response>
45 </comment>
46 <comment competitiveness='0.1' tags="humanCrown/compliment" gameType="
        board" gameId="checkers" madeOn="human">
47     <content>Nice move!</content>
48     <response>Haha</response>
49     <response>Thanks</response>
50     <response>I know!</response>
51 </comment>
52 <comment competitiveness='0.1' tags="humanCapture" gameType="board"
        gameId="checkers" madeOn="human">
53     <content>Wow, you got me there</content>
54     <response>Yes I did!</response>
55     <response>Had to hit you</response>
56     <response>Haha, true</response>

```

```

57     </comment>
58     <comment competitiveness='0.1' tags="humanCapture" gameType="board"
        gameName="checkers" madeOn="human">
59         <content>Outch!</content>
60         <response>Had to take the piece!</response>
61         <response>well, that's one less checker for you!</response>
62         <response>there's still more game to go</response>
63     </comment>
64     <comment competitiveness='0.3' tags="humanCaptureALot" gameType="board
        " gameName="checkers" madeOn="human">
65         <content>I see what you did there</content>
66         <response>Oh yes!</response>
67         <response>I had to do it!</response>
68         <response>Puts the game in my court!</response>
69     </comment>
70     <comment competitiveness='0.2' tags="humanCaptureALot/brag" gameType="
        board" gameName="checkers" madeOn="human">
71         <content>I see there is a jumping ceremony over there</content>
72         <response>Of course it is!</response>
73         <response>Yes, you are invited too!</response>
74         <response>It's not that big of a deal</response>
75     </comment>
76     <comment competitiveness='0.1' tags="humanCaptureALot/compliment"
        gameType="board" gameName="checkers" madeOn="human">
77         <content>Nice set of moves</content>
78         <response>Thanks</response>
79         <response>I just couldn't pass it up!</response>
80         <response>let's continue with our game!</response>
81     </comment>
82 </agent>
83
84 <human>
85     <comment competitiveness='0.1' tags="agentCrown/compliment" gameType="
        board" gameName="checkers" madeOn="agent">

```


86 <content>Nice crowning there!</content>
87 <response>Thanks</response>
88 <response>Pay respect to the king I guess</response>
89 <response>Now I can walk back and hunt your checkers</response>
90 </comment>
91 <comment competitiveness='0.3' tags="agentCrown" gameType="board"
gameName="checkers" madeOn="agent">
92 <content>Oh now you can walk backwards</content>
93 <response>Oh yes! Nice.</response>
94 <response>Well then be ready for it</response>
95 <response>You are right , so be careful</response>
96 </comment>
97 <comment competitiveness='0.3' tags="agentCapture" gameType="board"
gameName="checkers" madeOn="agent">
98 <content>Ouch!</content>
99 <response>Haha, get used to that</response>
100 <response>Sorry had to hit you</response>
101 <response>I know it hurts!</response>
102 <response>Oh sorry , stupid game rules</response>
103 </comment>
104 <comment competitiveness='0.2' tags="agentCapture/compliment" gameType
="board" gameName="checkers" madeOn="agent">
105 <content>I have to say that you got me there</content>
106 <response>I know! thanks</response>
107 <response>Now it 's your turn</response>
108 <response>Cool</response>
109 </comment>
110 <comment competitiveness='0.2' tags="agentCaptureALot" gameType="board
" gameName="checkers" madeOn="agent">
111 <content>Jump after jump!</content>
112 <response>Yes! I loved it</response>
113 <response>It 's my jumping exercise</response>
114 <response>Yes I am that awesome</response>
115 </comment>

```
116     <comment competitiveness='0.1' tags="agentCaptureALot/compliment"
      gameType="board" gameId="checkers" madeOn="agent">
117     <content>Such a killer move</content>
118     <response>I know! Thanks</response>
119     <response>I am so proud of my creators right now</response>
120     <response>This game is fun! </response>
121 </comment>
122 <comment competitiveness='0.3' tags="humanCrown" gameId="board"
      gameId="checkers" madeOn="human">
123 <content>Yes, crowned!</content>
124 <response>Oh you can walk back now!</response>
125 <response>Let's see where it takes you!</response>
126 <response>That won't get you anywhere</response>
127 </comment>
128 <comment competitiveness='0.2' tags="humanCapture" gameId="board"
      gameId="checkers" madeOn="human">
129 <content>Feels so good to jump like this!</content>
130 <response>Well, I am happy for you</response>
131 <response>Not for long</response>
132 <response>Haha, I know</response>
133 </comment>
134 </human>
135
136 </comments>
```

D Rummy Comment Library

This appendix contains the game-specific comment library for the rummy game, used in our study.

Listing 3: Rummy comment library

```
1 <?xml version="1.0"?>
2
3 <!--
4   THE GAME SPECIFIC COMMENT LIBRARY FOR SOCIAL GAMEPLAY FRAMEWORK
5   AUTHOR: MORTEZA BEHROOZ
6   WORCESTER POLYTECHNIC INSTITUTE
7 -->
8
9 <!--
10  > Attributes brief description:
11  - strength: determines how much of a strong move should it be,
12  the move which this comment is being made for, human's or agent's.
13  - competitiveness: how competitive the comment sounds.
14  - tags: the social tags which comment carries.
15  - gameType: if a specific type of game the comment is made for.
16  - gameName: if a specific game the comment is made for.
17  - madeOn: to be made on agent's move, human's or both.
18
19  > agent and human sections contain comments which should
20  be made by each of them.
21
22  PLEASE REFER TO SOCIAL GAMEPLAY FRAMEWORK DOCUMENTS FOR FURTHER
23  INFORMATION.
24
25 <comments>
26   <agent>
```

```
27 <comment competitiveness='0.5' tags="firstRound" gameType="cards"
    gameName="srummy" madeOn="both">
28 <content>How is your hand?</content>
29 <response>Not gonna tell you!</response>
30 <response>Terrible!</response>
31 <response>Good!</response>
32 </comment>
33 <comment competitiveness='0.5' tags="firstRound" gameType="cards"
    gameName="srummy" madeOn="both">
34 <content>Do you have good cards?</content>
35 <response>Not sure</response>
36 <response>Yes</response>
37 <response>Not really</response>
38 </comment>
39 <comment competitiveness='0.2' tags="humanMeld/compliment" gameType="
    board" gameName="srummy" madeOn="human">
40 <content>Clever meld!</content>
41 <response>Thanks</response>
42 <response>Oh yes!</response>
43 <response>Try to do the same!</response>
44 </comment>
45 <comment competitiveness='0.6' tags="humanMeld/brag" gameType="board"
    gameName="srummy" madeOn="human">
46 <content>These cards are nice, why meld? keep them</content>
47 <response>Haha, sure!</response>
48 <response>Really?!</response>
49 <response>You too!</response>
50 </comment>
51 <comment competitiveness='0.2' tags="humanMeld/compliment" gameType="
    board" gameName="srummy" madeOn="human">
52 <content>Look at that, what a meld!</content>
53 <response>Aha!</response>
54 <response>Thanks</response>
55 <response>Well try to learn!</response>
```

```

56     </comment>
57     <comment competitiveness='0.2' tags="humanLayOff/compliment" gameType=
        "board" gameId="srummy" madeOn="human">
58         <content>Good lay off!</content>
59         <response>Aha!</response>
60         <response>Thanks</response>
61         <response>Well try to learn!</response>
62     </comment>
63     <comment competitiveness='0.2' tags="humanLayOff/compliment" gameType=
        "board" gameId="srummy" madeOn="human">
64         <content>That meld just got bigger</content>
65         <response>Yes!</response>
66         <response>Not gonna stop either!</response>
67         <response>From my cards of course!</response>
68     </comment>
69     <comment competitiveness='0.2' tags="humanLayOff/compliment" gameType=
        "board" gameId="srummy" madeOn="human">
70         <content>Nice</content>
71         <response>Yes!</response>
72         <response>Thanks</response>
73     </comment>
74     <comment competitiveness='0.8' tags="agentMeld/brag" gameId="board"
        gameId="srummy" madeOn="agent">
75         <content>And that's how you make a meld</content>
76         <response>Wait for mine!</response>
77         <response>Don't get too excited!</response>
78         <response>Not really madam robot</response>
79     </comment>
80     <comment competitiveness='0.5' tags="agentMeld" gameId="board"
        gameId="srummy" madeOn="agent">
81         <content>Found a meld</content>
82         <response>Good for you</response>
83         <response>Won't get you anywhere</response>
84         <response>Nice!</response>

```

```

85     </comment>
86     <comment competitiveness='0.7' tags="agentMeld" gameType="board"
      gameName="srummy" madeOn="agent">
87         <content>Meld, here I go</content>
88         <response>Wait for mine!</response>
89         <response>Don't get too excited!</response>
90         <response>Not really madam robot</response>
91     </comment>
92     <comment competitiveness='0.5' tags="agentLayOff/compliment" gameType=
      "board" gameName="srummy" madeOn="agent">
93         <content>And that meld goes bigger</content>
94         <response>Nice</response>
95         <response>Try melding, it's better!</response>
96         <response>It's just one card, take it easy!</response>
97     </comment>
98     <comment competitiveness='0.5' tags="agentLayOff/compliment" gameType=
      "board" gameName="srummy" madeOn="agent">
99         <content>One less card for me</content>
100        <response>Nice</response>
101        <response>Interesting</response>
102        <response>It's just one card, take it easy!</response>
103    </comment>
104    <comment competitiveness='0.5' tags="agentLayOff/compliment" gameType
      ="board" gameName="srummy" madeOn="agent">
105        <content>And that meld goes bigger</content>
106        <response>It can't beat my lay offs</response>
107        <response>Good job</response>
108        <response>Nice</response>
109    </comment>
110    <!--More instances of these -->
111    <comment competitiveness='0.2' tags="agentFewCardsLeft" gameType="
      board" gameName="srummy" madeOn="both">
112        <content>Yes, I am finishing my cards</content>
113        <response>Not so soon</response>

```

```

114     <response>Good job</response>
115     <response>Keep at it</response>
116 </comment>
117 <comment competitiveness='0.2' tags="agentFewCardsLeft" gameType="
    board" gameId="srummy" madeOn="both">
118     <content>Only a few cards left here, haha</content>
119     <response>Good</response>
120     <response>Not so soon</response>
121     <response>Wait for my moves</response>
122 </comment>
123 <comment competitiveness='0.2' tags="humanFewCardsLeft" gameType="
    board" gameId="srummy" madeOn="both">
124     <content>Few cards to go for you</content>
125     <response>I know</response>
126     <response>Fingers crossed</response>
127     <response>Too soon to say</response>
128 </comment>
129 <comment competitiveness='0.2' tags="humanFewCardsLeft" gameType="
    board" gameId="srummy" madeOn="both">
130     <content>Oh you got only a few cards left</content>
131     <response>Do not worry, too soon to tell</response>
132     <response>Haha, I am gonna win</response>
133     <response>It is close</response>
134 </comment>
135 <comment competitiveness='0.2' tags="longTimeNoMeldByHuman" gameType="
    board" gameId="srummy" madeOn="human">
136     <content>You notice you have not made a meld in ages</content>
137     <response>Will do </response>
138     <response>Do not worry</response>
139     <response>I know!</response>
140 </comment>
141 <comment competitiveness='0.2' tags="longTimeNoMeldByAgent" gameType="
    board" gameId="srummy" madeOn="agent">
142     <content>I have not made a meld for a long time!</content>

```

```

143     <response>You are lazy!</response>
144     <response>Try harder</response>
145     <response>You will get there</response>
146 </comment>
147 <comment competitiveness='0.5' tags="twoMeldsInARowByHuman" gameType="
      board" gameId="srummy" madeOn="human">
148     <content>Nice! You got the golden cell</content>
149     <response>Yes I did! Let's see if it is helpful</response>
150     <response>Haha, whatever</response>
151     <response>It's just one cell, take it easy!</response>
152 </comment>
153 <comment competitiveness='0.5' tags="twoMeldsInARowByAgent" gameType="
      board" gameId="srummy" madeOn="agent">
154     <content>Wow meld and meld</content>
155     <response>Awesome!</response>
156     <response>Goo djob</response>
157     <response>Stop it</response>
158 </comment>
159 </agent>
160 <human>
161     <comment competitiveness='0.5' tags="firstRound" gameType="cards"
      gameId="srummy" madeOn="both">
162     <content>How is your hand?</content>
163     <response>Not gonna tell you!</response>
164     <response>Not so bad</response>
165     <response>Well, you'll see, haha</response>
166 </comment>
167 <comment competitiveness='0.5' tags="firstRound" gameType="cards"
      gameId="srummy" madeOn="both">
168     <content>I have terrible cards!</content>
169     <response>Wow, I am sorry</response>
170     <response>You'll get better ones</response>
171     <response>Still too soon to say!</response>
172 </comment>

```



```

173     <comment competitiveness='0.2' tags="humanMeld" gameType="board"
        gameName="srummy" madeOn="human">
174     <content>I got good cards!</content>
175     <response>Then I might be just losing</response>
176     <response>Really? good, me too!</response>
177     <response>Hey, not so soon!</response>
178 </comment>
179 <comment competitiveness='0.6' tags="humanMeld/brag" gameType="board"
        gameName="srummy" madeOn="human">
180     <content>Best meld ever!</content>
181     <response>Not really!</response>
182     <response>Haha, awesome</response>
183     <response>Wait for mine then</response>
184 </comment>
185 <comment competitiveness='0.2' tags="humanMeld/compliment" gameType="
        board" gameName="srummy" madeOn="human">
186     <content>Here I go, meld!</content>
187     <response>Nice</response>
188     <response>Good job</response>
189     <response>I have to do more melds then</response>
190 </comment>
191 <comment competitiveness='0.2' tags="humanLayOff/compliment" gameType="
        board" gameName="srummy" madeOn="human">
192     <content>Found a lay off, yes!</content>
193     <response>Nice</response>
194     <response>Good job</response>
195     <response>I should do more lay off too</response>
196 </comment>
197 <comment competitiveness='0.2' tags="humanLayOff/compliment" gameType="
        board" gameName="srummy" madeOn="human">
198     <content>I love lay offs!</content>
199     <response>me too!</response>
200     <response>Exactly, once less card on the go</response>
201     <response>Cool</response>

```

```

202     </comment>
203     <comment competitiveness='0.2' tags="humanLayOff/compliment" gameType=
        "board" gameName="srummy" madeOn="human">
204         <content>Haha, lay off!</content>
205         <response>Yes!</response>
206         <response>Awesome</response>
207     </comment>
208     <comment competitiveness='0.2' tags="agentMeld" gameType="board"
        gameName="srummy" madeOn="agent">
209         <content>Good meld</content>
210         <response>Thanks</response>
211         <response>Yes, I just found it</response>
212         <response>I know, thanks</response>
213     </comment>
214     <comment competitiveness='0.5' tags="agentMeld" gameType="board"
        gameName="srummy" madeOn="agent">
215         <content>I can do a better meld!</content>
216         <response>Oh really?</response>
217         <response>I am watching!</response>
218         <response>Go ahead!</response>
219     </comment>
220     <comment competitiveness='0.7' tags="agentMeld" gameType="board"
        gameName="srummy" madeOn="agent">
221         <content>These melds are not gonna make you win</content>
222         <response>oh on the contrary!</response>
223         <response>Well game rules would disagree</response>
224         <response>well let's see</response>
225     </comment>
226     <comment competitiveness='0.2' tags="agentLayOff/compliment" gameType
        ="board" gameName="srummy" madeOn="agent">
227         <content>Good job on lay off</content>
228         <response>Yes!</response>
229         <response>I know</response>
230         <response>Thanks</response>

```

```

231 </comment>
232 <comment competitiveness='0.5' tags="agentLayOff" gameType="board"
      gameName="srummy" madeOn="agent">
233   <content>Lay offs are very helpful</content>
234   <response>I like them too </response>
235   <response>I know</response>
236   <response>Exactly</response>
237 </comment>
238 <comment competitiveness='0.5' tags="agentLayOff/compliment" gameType
      ="board" gameName="srummy" madeOn="agent">
239   <content>Keep the cards, why lay off?</content>
240   <response>Haha, sure!</response>
241   <response>Well, you too</response>
242   <response>You smart human</response>
243 </comment>
244 <!--More instances of these -->
245 <comment competitiveness='0.2' tags="agentFewCardsLeft" gameType="
      board" gameName="srummy" madeOn="both">
246   <content>Wow, you are close to winning</content>
247   <response>Yes! Fingers crossed</response>
248   <response>Uhum, thanks</response>
249   <response>You are playing very good too</response>
250 </comment>
251 <comment competitiveness='0.2' tags="agentFewCardsLeft" gameType="
      board" gameName="srummy" madeOn="both">
252   <content>Only few cards left there</content>
253   <response>I know, I am excited</response>
254   <response>So close to win</response>
255   <response>Only if I finish these last ones</response>
256 </comment>
257 <comment competitiveness='0.2' tags="humanFewCardsLeft" gameType="
      board" gameName="srummy" madeOn="both">
258   <content>I am gonna win with these few cards!</content>
259   <response>Do not be so sure</response>

```

260 <response>Good!</response>

261 <response>Well let 's see about that</response>

262 </comment>

263 <comment competitiveness='0.2' tags="humanFewCardsLeft" gameType="

board" gameId="srummy" madeOn="both">

264 <content>I have a few cards left</content>

265 <response>I see, nice</response>

266 <response>Not so soon</response>

267 <response>I should hurry up then!</response>

268 </comment>

269 <comment competitiveness='0.2' tags="longTimeNoMeldByHuman" gameType="

board" gameId="srummy" madeOn="human">

270 <content>You notice you have not made a meld in ages</content>

271 <response>Will do </response>

272 <response>Do not worry</response>

273 <response>I know!</response>

274 </comment>

275 <comment competitiveness='0.2' tags="longTimeNoMeldByAgent" gameType="

board" gameId="srummy" madeOn="agent">

276 <content>I have not made a meld for a long time!</content>

277 <response>You are lazy!</response>

278 <response>Try harder</response>

279 <response>You will get there</response>

280 </comment>

281 <comment competitiveness='0.5' tags="twoMeldsInARowByHuman" gameType="

board" gameId="srummy" madeOn="human">

282 <content>Nice! You got the golden cell</content>

283 <response>Yes I did! Let 's see if it is helpful</response>

284 <response>Haha, whatever</response>

285 <response>It 's just one cell, take it easy!</response>

286 </comment>

287 <comment competitiveness='0.5' tags="twoMeldsInARowByAgent" gameType="

board" gameId="srummy" madeOn="agent">

288 <content>Wow meld and meld</content>

```
289     <response>Awesome!</response>
290     <response>Good job</response>
291     <response>Stop it</response>
292 </comment>
293 </human>
294 </comments>
```