

Unstable Mangrove

Developed by: Geneva Isaacson, Adam McKnight, Gianluca Panza

Developed with:



WPI



This game is adapted from Unstable Uniforms by
Unstable Games:

<https://www.unstablegames.com/products/unstable-unicorns>

Unstable Mangrove

Object of the Game

The first person with the required number of mangroves in their forest wins!

- 3 - 5 Players: 7 Mangroves to win
- 6 - 8 Players: 6 Mangroves to win
- 9 - 10 Players: 5 Mangroves to win

Ages: 10+

Required materials: Table and game cards

Game environment: Indoors

Learning Outcomes

This game is intended to show threats to mangroves and how they can be counteracted. This competitive game allows players to have a fun experience while learning about the harms and benefits to mangroves.

Setup

Gather all of the Seedlings from the Deck and place one in each Players forest. The rest of the seedlings will stay in one stack and be placed into the nursery.

Separate out the white, red, and black mangroves and sort them into their own piles. These will be placed back into the big forest.

Shuffle the remaining cards and deal 5 to each player. The rest of the stack will be your Draw Pile.



Game Play

Whoever is wearing the most green starts since they are most like the forest. Turns go clockwise around the table, and each turn is made up of 3 phases.

1. Draw Phase

- a. Draw 1 card from the Draw Pile.
- b. If you are out of cards, draw five more cards from the Draw Pile.

2. Action Phase

- a. Play 1 or More cards from your hand. When you play a card you must say what is written on it OR
- b. Draw 1 more card from the Draw Pile

3. End of Your Turn

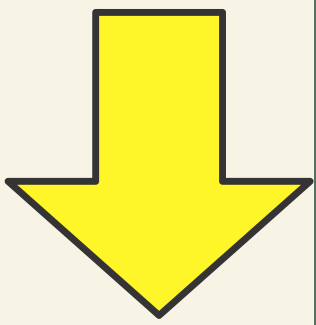
- a. Discard down to the hand limit of 7 cards.

Card Types

Instant: Play an Instant Card during your turn to immediately get more mangroves into your forest.

Upgrade: Play 1 Upgrade into your forest until you have enough upgrades to get another mangrove.





S

S

S

M

M

M

Card Types

Downgrade: Play a Downgrade card into someone else's forest to give it a negative effect. These can only leave a forest when a player puts the correct Upgrade to cancel out the negative effect. When the negative effect has been canceled, the Downgrade and Upgrade Card is Discarded.

Seedling: Seedlings are held in the nursery. Every player has one seedling in their forest from the beginning of the game. If seeding is destroyed it must return to the nursery.

Mangrove: Mangroves can be taken when a player has two upgrade cards. The two upgrade cards are put into the discard pile and the player then has their pick of a mangrove. When a downgrade card is placed into your jungle, you are unable to play upgrade cards to get more mangroves.

End of the Game

The first person to make a full forest wins!

Cards that Go Together:



New legislation
banning people from
cutting down trees

Nueva legislación
protegiendo a la gente
de la tala de
manglares



Soil Forensics

Análisis forense
del suelo



Salinity Testing

Pruebas de
salinidad



Illegal cutting down
of mangroves Need
legislation to plant
Tala ilegal de
mangles. Necesita
legislación para
plantar



Fresh water surge.
Need Forensics or
Testing

Oleada de agua dulce.
Necesita análisis
forense o pruebas



Rapid Salinity
Change Need
Forensics or Testing
Cambio rápido de
salinidad Necesita
análisis forense o
pruebas



Found more land to
plant on

Encontré más tierra
para plantar



High speed boating
limit set

Límite de
navegación de alta
velocidad
establecido



Polution clean up
day

Día de limpieza de
contaminación



Coastal
development need
to find more land

Desarrollo costero
Necesito encontrar
más tierra



High speed boating
Need to set a speed
limit

Navegación de alta
velocidad Necesita
establecer un límite
de velocidad



Contamination and
plastic Need a clean
up day

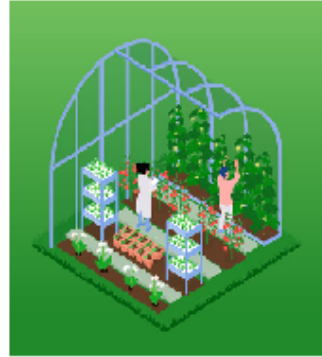
Contaminación y
Plástico. Necesito
hacer una limpieza

Cards



Gain 1 mangrove
of your choice

Gana 1 mangle de
tu elección



Take one seed from
the nursery for your
forest

Toma una semilla
del vivero para tu
bosque.



Take any upgrade
card from the discard
for your forest.

Toma cualquier
mejora de la pila de
descartes para tu
bosque

S



White Mangrove
Seedling

Plántula de mangle
blanco

S



Red
Mangrove
Seedling

Plántula de
mangle
rojo

S



Black Mangrove
Seedling

Plántula de mangle
negro

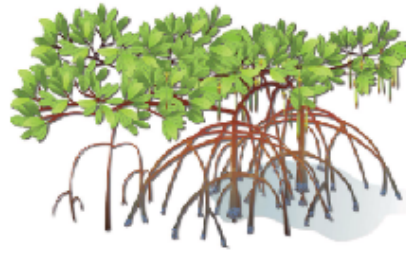
M



White Mangrove

Mangle Blanco

M



Red Mangrove

Mangle Rojo

M



Black Mangrove

Mangle Blanco



Increase Educational Awareness

Incrementar la conciencia educativa



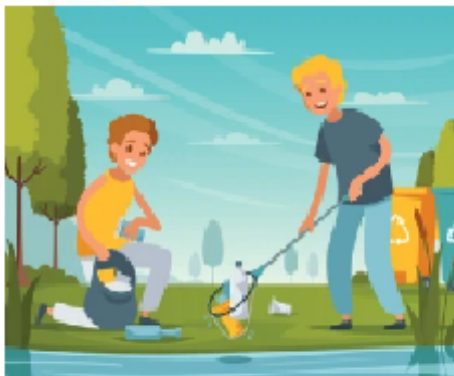
Find more seeds

Encuentra más semillas



Obtain a grant to plant more

Obtén una subvención para plantar más



Cleaning the canal

Limpieza del canal



Volunteers plant more trees

Los voluntarios plantan más árboles



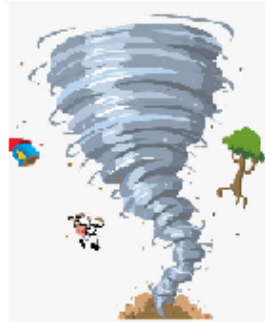
New Nursery

Nueva guardería



Legal Fishing and Crabbing

Pesca legal y pesca de cangrejos



Hurricane. Lose half or the larger portion of your forest

Huracán. Pierde la mitad o la mayor parte de tu bosque



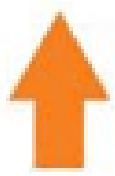
Birds and other wildlife repopulate in your forest

Las aves y otros animales salvajes se repoblan en su bosque



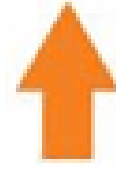
Soil Forensics

Análisis forense del suelo



Salinity Testing

Pruebas de salinidad



New legislation banning people from cutting down trees

Nueva legislación protegiendo a la gente de la tala de manglares



Fresh water surge. Need Forensics or Testing

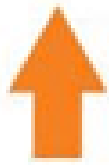
Oleada de agua dulce. Necesita análisis forense o pruebas



Rapid Salinity Change Need Forensics or Testing
Cambio rápido de salinidad Necesita análisis forense o pruebas



Illegal cutting down of mangroves Need legislation to plant
Tala ilegal de mangles. Necesita legislación para plantar



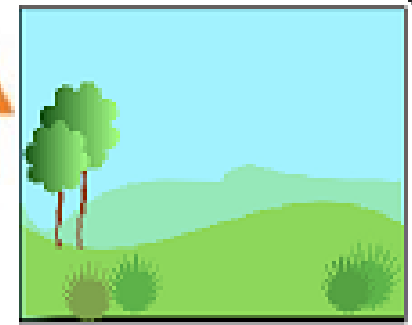
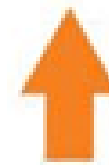
High speed boating
limit set

Límite de
navegación de alta
velocidad
establecido



Polution clean up
day

Día de limpieza de
contaminación



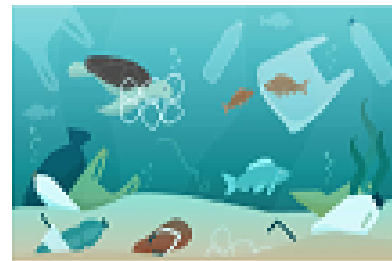
Found more land to
plant on

Encontré más tierra
para plantar



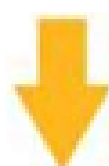
High speed boating
Need to set a speed
limit

Navegación de alta
velocidad Necesita
establecer un límite
de velocidad



Contamination and
plastic Need a clean
up day

Contaminación y
Plástico. Necesito
hacer una limpieza



Coastal
development need
to find more land

Desarrollo costero
Necesito encontrar
más tierra