

# Faculty committees play active policy making role

by Debbie Allen  
Newspeak staff

The Constitution of the WPI faculty provides for the organization of faculty committees. The Constitution was passed by the faculty in 1970 and approved by the Trustees. It has been revised and amended eight times.

The committees are concerned with any issues that are of concern to the faculty. Members of the faculty, members of the administration, and students may be members of faculty committees. Faculty members of committees may be elected by the faculty or appointed by the President. Student members are selected by the student body. The standing committees of the faculty are the following: Committee on Governance, Committee on Academic Policy, Committee on Academic Operations, Committee on Graduate Studies and Research, Committee on Tenure and Academic

Freedom, Committee on Appointments and Promotions, Committee on Student Advising, and Committee on Administrative and Financial Policy. The Committee on Governance is the chief faculty committee. It consists of five faculty members: Dean of Faculty, the Secretary of the Faculty, and one faculty member appointed by the President. Each member serves three years. The committee is responsible for conducting the election of the Secretary of the Faculty and of faculty members to standing committees. It also considers matters that do not fall within the jurisdiction of existing faculty committees, the Student Government, the Campus Judicial System, or the administration. It also makes recommendations to the faculty on changes and additions to the faculty rules and bylaws.

Three committees that most affect students and have student members are

the Committee on Academic Policy, Committee on Academic Operations, and Committee on Student Advising. The duties of the Committee on Academic Policy are stated in the Faculty Constitution as "responsible for making policy recommendations regarding the direction and goals of undergraduate education at WPI." This committee keeps a close watch on the undergraduate academic program. At this time, the committee is studying the competency exam and what practices and policies are used in the various departments. To study a certain aspect of the academic program, sub-committees are formed that gather information on the subject. Questionnaires are also used to collect information. For example, a questionnaire was sent to seniors about the competency exam. Then, this information is discussed among the whole committee. Last year, the committee reviewed

the admissions policy, MQP's, and IQP's. The committee has also reviewed the grading system. They held open meetings and got feedback from students. The result was that no changes were made because the students like the system. The committee has also received much positive feedback from alumni about WPI's academic program. Two students, John Hall and Matt Weiderpass, are on the committee. They function as regular members of the committee and have full voting privileges, and provide a student viewpoint. The committee also encourages criticisms and comments from the student body and this input is welcome.

The duties of the Committee on Academic Operations are stated in the Constitution as "responsible for monitoring procedures for administering existing undergraduate

(Continued on page 14)

## WPI Newspeak

The student newspaper of Worcester Polytechnic Institute

Volume 8 Number 24

Tuesday, December 9, 1980

SocComm  
nominees  
interviewed

— see page 4 —

## Co-Op Program offers wide range of opportunities

by Jeff Roy  
Newspeak staff

Any WPI students that are looking for a different way to gain their WPI degree will find one such way in WPI's Co-op program. The Co-op program, although it requires an additional year of schooling, allows students an opportunity to get out into the working world as a part of the learning process.

Since June of 1976, when the program was started on an experimental basis, students have been able to combine their traditional classroom work with participation in industry as pre-professionals. At this time, approximately 80-90 students are involved in this on-the-job training.

In 1979, John Farley became WPI's first full-time director of the Cooperative Education Program, as it is now known. Before Farley arrived at WPI, the program catered to a small number of students.

"When Dr. Cranch came to WPI, he gave a lot of support to the Co-op program which helped," noted Farley. "The program has many things to offer to WPI students." He cited three basic areas in which the program helped the students.

He first talked about the program's ability to help students see what their major will involve in the actual industry setting. He also cited the fact that the program can help finance the WPI education. He said, "If a student is short of money for school, he can get involved in the program and make some money to put towards his education." He also mentioned that the program gives the students an opportunity in looking for a job after they graduate. "Many companies use the co-op program for recruiting," he continued. "The company has an opportunity to see the student work for it and gets a better idea of how the student will work if in fact he is hired."

To be eligible for the program, a WPI student must have junior status, i.e., must have completed at least two years of schooling. From that point, the program is set up with two eight month working periods, where the student leaves his academic studies to work in industry. Currently, there are over 50 employers that seek WPI students to work for them as Co-op students.

"The program also gives students a break from school," added Farley. "If the

student doesn't feel like picking up books, he has an opportunity to go out and get job experience through the program. The student doesn't have to pay tuition while he is out working."

The two work periods that take place during any given year start in January and June, respectively (and run for eight months from there). Students apply for the program several months in advance and must go through a job matching as well as interviewing and application stages. Farley looks at the student's academic goals and the student's experience when setting him up with a potential employer. The program does not guarantee everyone who steps into Farley's office a job, but every effort is made to locate job assignments for qualified students.

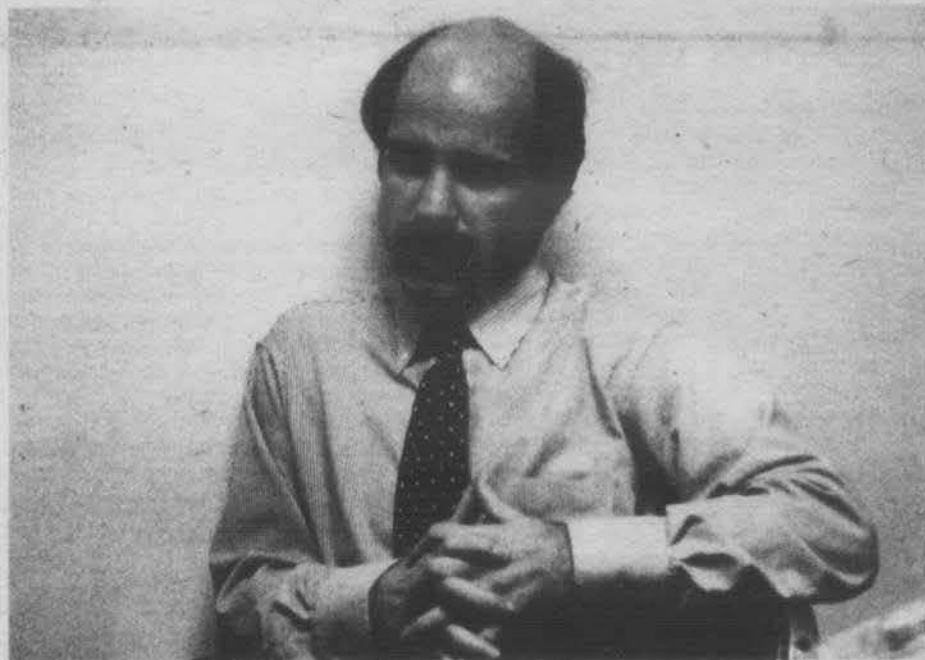
Farley noted the fact that he often had a surplus of jobs in the Computer Science area and had the most trouble finding jobs for those students in the civil engineering department.

The final preparations have been made for next months' working period already, and Farley is now concentrating on applicants for the program which will begin in June. "Anyone who is interested in the program can come in and talk to me about it. Usually we start the process for the June period in January," he said. His office is located on the first floor of Boynton Hall.

Farley projected participation of roughly 125 students within the next couple of years. He feels that this is a very good number to work with to support the program at WPI.

When Farley was asked about the value of the Co-op program over the traditional classroom education, he responded, "Every student has his own individual needs and this program provides another opportunity for the student to satisfy his needs. Not every student wants this type of program, but it is there for students who think they could benefit from it — keeping consistent with the idea of the Plan" in offering other alternatives to gaining an education. The concept of the co-op program is nothing new and programs have been developing in educational institutions since the early 1900's.

Farley could not come up with any disadvantages in the program, except that it adds another year to the traditional four-year approach to the Bachelor's Degree. He also specified that the program does not qualify for work on the major and interactive



John Farley, Co-Op Coordinator.

— Keith Agar

qualifying projects, but very often generate ideas for these projects.

In any event, Farley assured that the

program is out of its experimental stages and will add another dimension to the offerings available in the WPI Plan.

## Controller resigns due to conflict with policies

by Annamaria Diaz

William F. Barrett, who had been the Controller and Assistant Treasurer since 1963, resigned recently. His resignation was due to philosophical differences with some administrators and faculty about the management of fiscal and business affairs. Mr. Barrett felt it necessary to resign his position to avoid compromising his basic principles and methods of management.

The academic changes brought about with the Plan have also affected the approach in managing fiscal and business affairs. Many people in the administration and faculty have different opinions about how various positions should be managed. The responsibilities of the Controller are inclusive.

The administration has formed a search

committee to hire another Controller. Applications have been received from persons in the Northeast and Midwest. The committee has already interviewed a couple of applicants. The position should be filled by mid-January 1981.

The following memorandum was sent out to all members of the WPI Community by David E. Lloyd, the Vice President for Business Affairs and Treasurer.

*I announce with extreme regret the resignation of our Controller, Mr. William F. Barrett, effective October 31, 1980.*

*Bill has served WPI with a high level of dedication and integrity for almost 18 years and these efforts, among many others, are greatly appreciated by all members of the WPI community.*

*We wish him the best for the future.*

# Newspeak

(USPS 535-480)

The student newspaper of Worcester Polytechnic Institute  
 Box 2472 WPI, Worcester, Massachusetts 01609  
 Phone (617) 753-1411 extension 464, or 756-6575

<b>features editor</b> Maureen Higgins	<b>editor-in-chief</b> Lynn Hadad	<b>sports editors</b> Mark Boivin Shauna Donovan
<b>news editor</b> Doug Fraher	<b>photography editor</b> John Mar	<b>graphics editor</b> Jim Diemer
<b>business manager</b> Mary Montville	<b>circulation manager</b> Mike Balinskas	<b>faculty advisor</b> Kent Ljungquist
<b>advertising manager</b> Jacky Gemma	<b>associate editors</b> Scott Daniels Tom Nicolosi Eric Schade	

**STAFF**

Keith Agar	Scott Fortier	Jeff Roy
Debbie Allen	Humberto Guglielmina	Fred Rucker
Rich Bibbins	Steve Kmietek	Ole Rose
Mike Beach	Steve Knopping	Lynn St. Germain
Greg Caccavale	Lisa Longwell	Walter Seagrave
Paul Cotnoir	Greg Macaulay	Kevin Santry
Annamaria Diaz	Joan Marler	Maureen Sexton
Jim Dyer	Gregg Miller	Artie Shorrock
Kim Ferris		Bob Thivierge
		Mitch Wolrich

WPI Newspeak of Worcester Polytechnic Institute, formerly the Tech News, has been published weekly during the academic year, except during college vacations, since 1909.

Letters-to-the editor must be signed and contain a telephone number for verification. WPI Newspeak is a member of the Columbia Scholastic Press Association and the National News Bureau. Newspeak subscribes to Campus Digest, Collegiate Headlines, and National On-Campus Reports. Editorial and business offices are located in Room 01, Sanford Riley Hall at WPI. Copy deadline is noon of the Saturday preceding publication. Printing done by Colony Press, 314 Washington Street, Auburn. Second class postage paid at Worcester, Massachusetts. Subscription rate is \$5.00 per school year, single copies 20 cents within the continental United States. Make all checks payable to WPI Newspeak.

## Publicity of off campus events needs improvement

To the editor:

The two articles on Ramsey Clark, in Newspeak, on Dec. 2, 1980, brought a question to my mind after reading the part that said, "This reporter did not see any Iranians" in the crowd. I must ask, "Does the reporter who wrote the articles, know all the Iranians in the area, or did he have a survey to see who was Iranian and who was not, in the crowd of 400 people?" He also mentioned that he saw "few (if any) Tech students in the audience." Of course, there was low WPI attendance.

There were no signs of any informative papers (there might have been one or two which nobody saw) hung on the bulletin boards about Ramsey Clark's coming to Worcester. If the group "Boston" had come to one of the campuses in the Worcester area, signs about them would have been posted everywhere. I think it is a shame that the authorities at this educational (not social) institution are not concerned with politics or what goes on of interest outside the campus.

Nasser Kalantar-Nayestanaki

# LETTERS

## SocComm nominee sets objectives

Contrary to popular belief the third Candidate for Social Committee Chairperson is alive and well and living off campus. Due to technical difficulties my letter of introduction was not presented to Newspeak in time to make the issue containing those of the other two candidates. However, right now I would like to present my qualifications and briefly outline my Plans for Social Committee's future.

I have been actively involved in Social Committee for a little over a year now (joining soon after ashtrays and balloons started littering the campus). As Pub Entertainment Committee Co-Chairperson I have gained valuable insight into the production, promotion and booking of a variety of acts. This past year we have tried to bring a variety in entertainment to the Pub. Some of these worked out very well (ie. Steve Dacri the Magician) while others didn't (ie. Campus Feud), but we gave it a shot.

Recently I had the pleasure of being one of WPI's representatives to the 1980 New England Regional Conference sponsored by N.E.C.A.A. and A.C.U.I. This conference is an opportunity for the Social Committee representatives of all the colleges in New England to get together and exchange ideas, meet agents, and view acts. While there I worked closely with area colleges in block-booking. Block-booking enables us to obtain acts at a lower rate because it allows the acts to play in one area for an extended period of time thus cutting their travel expenses. In addition being Social Chairman of a fraternity on campus has also benefited my experience.

A major problem with the Social Committee at present is the way the sub-committees are put together. Currently there are eight sub-committees in the body of the Social Committee. Where applicable they are to meet every week and the Programming Board (the eight sub-committee chairpersons, the social committee chairperson and the advisor) meets every Monday night to make reports, discuss any problems, etc. This all sounds good on paper but in practice it is not working. Currently the committees consist of one member, the chairperson, and they are doing all the work. I propose instead to have more than just a mere nine students actively involved in what we do. I feel the basic structure of the sub-committees and the programming board is sound but in the future the sub-committee chairpersons will use the labor pool accessible to them or else they will not be chairpersons. A meeting of the entire Social Committee as a body, to keep them informed, is also a must. At such meetings the individual members of each sub-committee will become informed of plans the other sub-committees have and be able to supply additional input. How could so many allow so few to decide so much on so little input? With the Committee structured as stated it will allow for better and more efficient use of our social dues by bringing us acts we want to see.

If you want your social dues spent more effectively then vote for Bob Sinkiewicz for Social Committee Chairperson.

Bob Sinkiewicz

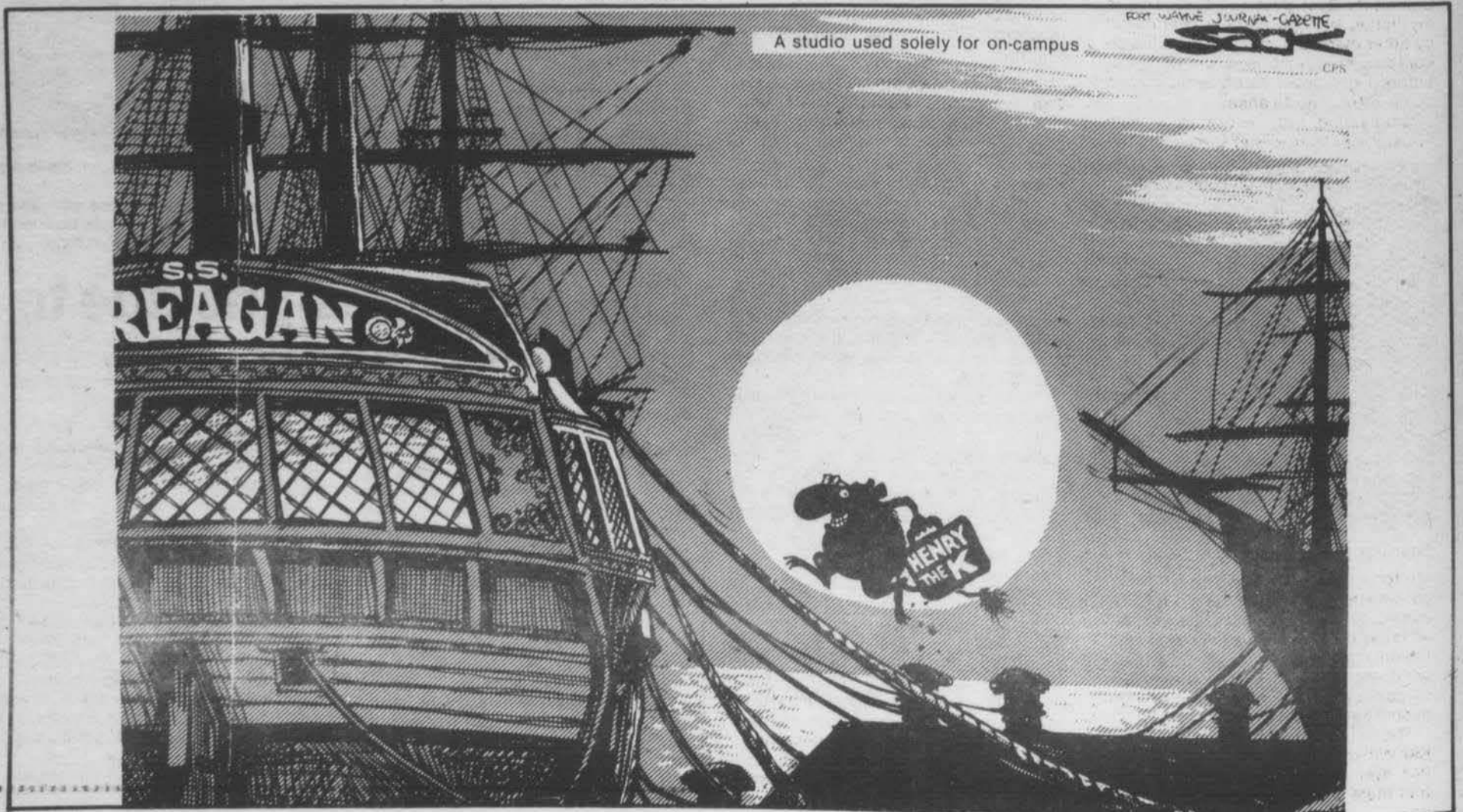
## Recording Studio has an uphill battle

To the editor:

Lens and Lights would like to take the time to react to Mr. Starr's letter of last week concerning a recording studio at WPI. To say he has an uphill battle ahead of him would be an understatement. About two years ago, Lens and Lights had at its disposal all the equipment necessary to start a small studio. Upon request for a suitable set of rooms (the old, decaying WICN studio in Alden Hall), we were confronted with a point-blank refusal; the school could not spare the valuable space.

use would be at best impractical, as well as relatively expensive to start up. The amount of use it would see from internal sources could not justify the expenditure needed for all the specialized equipment not already on-hand. The Lens and Lights' argument was better supported; we already have much of the equipment needed. The music department would have to start from scratch. As for a suitable location, the music department might have more pull in acquiring a place to

(Continued to page 15)



A studio used solely for on-campus

## The ghost of Christmas spirit

by Gregg Miller  
Newspeak staff

During the recent Thanksgiving vacation, I went home (to New York) and one day decided to go to Manhattan with my girlfriend. It being close to Christmas, we decided to walk up Fifth Avenue to look in on the infamous Christmas-decorated department store windows. Much to our dismay, the most prominent symbol of Christmas was not the tree in Rockefeller Center.

Could it be that these people have forgotten the old Christmas adage — it is better to give than to receive? Sufficiently curious, I stopped a couple of random pedestrians, asking them why they did not donate:

Ped 1: Are you kidding? I work hard for my money. Why should I support some lazy bum. Let 'em get a job.

Ped 2: Get lost!

Ped 3: I don't know. Where's the nearest subway station, do you know?

Ped 4: Hey man, No Nukes! Ya know

## SATIRE

Instead, the volunteers in the service uniforms of the Salvation Army were the most vehement mainstays of the "Christmas spirit." There they stood: a brass quartet playing seasonal tunes on this corner; a woman in suffragette attire exhorting the crowd for donations on the next corner; a uniformed man on the next corner ringing a bell; and so on. The trend continued on every block from 34th Street through 61st Street.

Clang! Clang! Clang! Like fingernails across a blackboard, the bells rang in caustic and dissonant harmony. Stopping for a moment, we watched as the majority of the holiday shoppers passed by these volunteers, totally ignoring the pleas for contributions.

what I mean?

Well, that didn't exactly answer my question but I suppose it will have to suffice. For myself, I'm just full of Christmas spirit: the feeling of brotherhood with total strangers: the happiness that pervades the Christmas season; and the continuous singing of "Jingle Bells." As proof of my total immersion in the Christmas spirit, let me relate an actual occurrence:

While in New York, a perfect stranger (a "bag lady") approached me and asked, "I'm hungry, can you help me?" Enveloped with the Christmas spirit, I hastily replied, "There's a good omelet restaurant on 48th Street and 3rd Avenue." Isn't Christmas-time just magical?

## The adventures of kid commuter

People have often wondered who I am, what I look like, what kind of car I drive (a Plymouth Valiant), and so on. Last week, some joker who called himself Kid Photographer, caught me checking the air pressure in one of my tires, and said he was going to get the world's first picture of Kid Commuter. I had his camera confiscated by the Campus Police because I prefer to remain like the "Elephant Man." Someday I'll make a public appearance, but for now, my identity must remain confidential. I look like any other commuter.

Anyway, now that I gained the respect of the members of the WPI community, I feel it is only appropriate that I share with you the Annual Kid Commuter Best Bets for 1980. This is my listing of tops usually overlooked by other members of the media. It also contains my predictions for 1981. But before I get down to bizness, there's some letters I gotta ansa.

One young lady wrote in saying, "Dear Kid: It is true that the Commuter

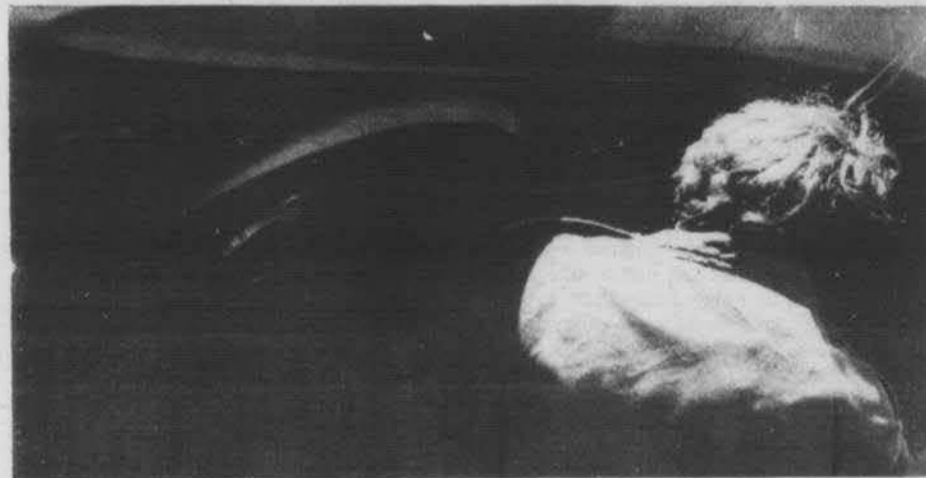
secondly, I would refer you to Gardner Pierce and he'll take care of you. Just tell him that cousin Kid sent ya.

OK, now for the "Best Bets. Each award winner gets a free Kid Commuter bumper sticker and may claim his or her prize by sending a stamped-self-addressed envelope to me.

**BEST CLASSIFIED AD:** There was a tie here between Dr. Johnny Cellophane and the Ukrainian Gigolo. They both win because of their commitments to music and fertility on the WPI campus.

**THE "WOULD HAVE BEEN A GWEEP HAD HE GONE TO WPI AWARD":** This goes to Bruce Springsteen, because it's easy to say he would have adapted very well to the new DEC-20 and could have been writing good material such as "Born to WACCC" or even "The Gweep Street Shuffle."

**THE BEST DAKA MEAL:** This is easy. The best meal would include one "Cook it 'til it stops screaming" hamburger, put it on a tinted roll, green



The first photograph of kid commuter

— Kid Photographer

Motto is 'Commuters do it at 55,' and if so, what do they do at 55?' Well, the answer to the first question is yes, but as far as the second part is concerned, the only thing ... er, thing I can remember doing at 55 was when I was selling magazines at 55 Grove Street and the people bought one.

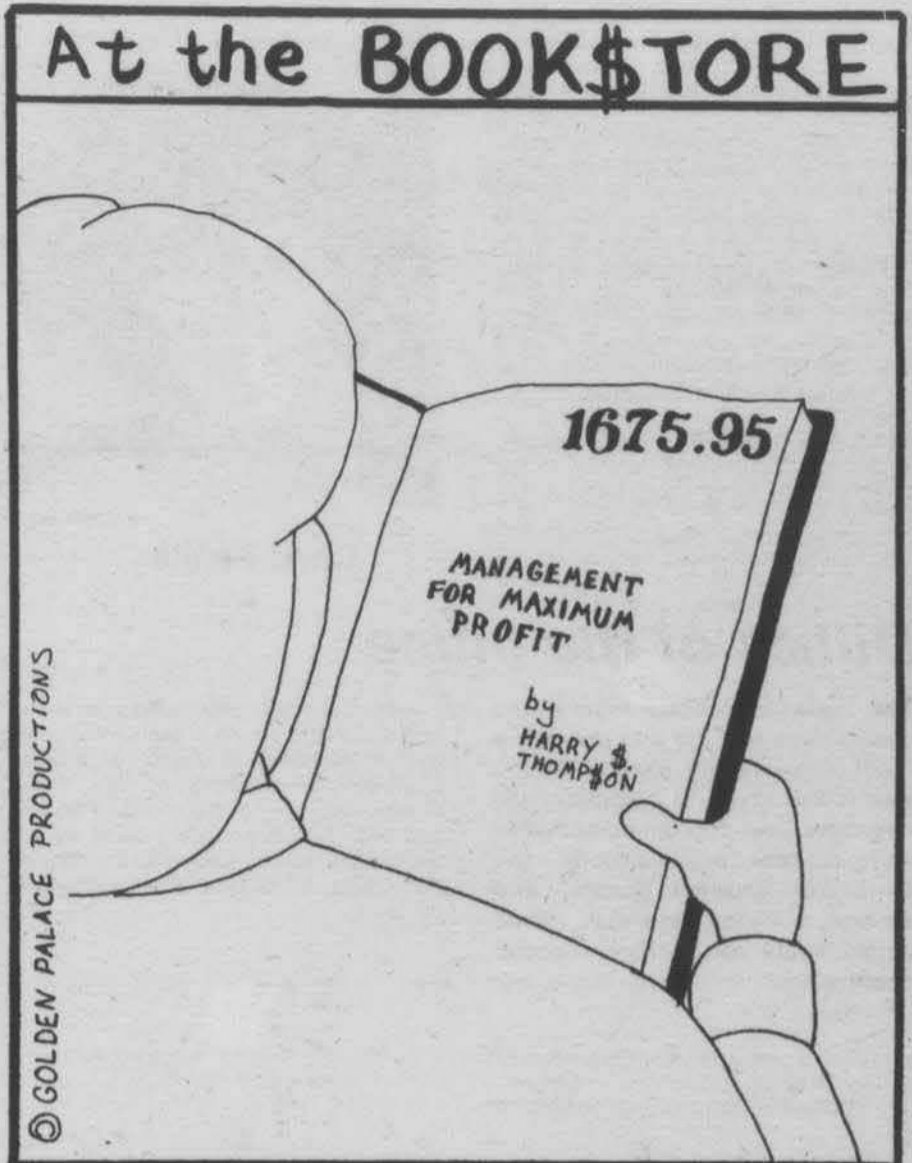
The next letter-writer says, "Dear Kid: Will the lights in the Commuter Office ever shine?" Well, I didn't know that there was a commuter office, and

vegetable, pudding, and milk.

The election process for the remaining "Best Bets" is still under way and you, too can participate in the decision. If you have any nominations or gripes, simply send them to Kid Commuter, c/o WPI Newspeak, Box 2472.

As far as the 1981 predictions are concerned, here's a few. Firstly I predict that the United States will have

## Coming soon...



a new President before February. Secondly, I predict that WPI will change its name. Third off, I predict that not all of my predictions will come

true. Last but not least, I predict that WPI will drop its tuition rate considerably. Next week, Kid Commuter writes his first protest song.

## Reminiscing...

Today's column is a reminiscing. A remembering of a time much better than today. A celebration of the passing of a friend — Tom Daniels.

I'm sure most of you don't even remember Tom, although he played an important role on campus. This is all back in the dark ages — before history was automatically recorded, with instant reply, on tape by WPIC-TV. Back in the time of George Hazzard. Back

Tom rose through the ranks at Newspeak quickly. As much as we'd like to, how can we forget his satires. His "dirty tricks campaign" redefined yellow journalism. Then he took a floundering paper away from Rory O'Connor who had redefined "tasteless", "amoral", and for the same reason, "adumbration". The paper prospered. What's come of it since then? In a bloudless coup, Man-

## LIMERICK OYSTERS

when Don Reutlinger was Czar of Student Affairs. Long before anyone ever heard of "The Higgins House Parking Lot". Back when everyone complained about the Chem Eng Comp, not the Civil Comp. Back when the Social Committee booked bands like J. Giles and the Kinks. Back when a KAP named SAFA kept WPI informed about Sports. Before Ronald Reagan, Ian Smith, the draft, the drinking age change, or the ban on "Alice". Back when I was Business Manager of Newspeak. Back when Tom was editor.

dile took it over and spent his time wallowing in strawberry ice cream. And now there's the fascist dictator. Nothing's been right since. Even Pat Dunn quit and left the paper stuck with Ljungquist.

Yes, the WPI community has a lot to be thankful about for Tom Daniels. Then he became a nuke. And in a tragic ending, he was married on the 29th of November to the Little Red Haired Girl. Such is the fate of leadership. Jean — good luck.

## Elections for Social Committee Chairman

will be this

Thursday, December 11 in Daniels Hall.

# Chairman nominees reply to current issues

by Jim Diemer  
Graphics editor

From the actions of various organizations on campus, it has been brought to the attention of the Newspeak Association that there are several issues that the new social committee chairperson will be confronted with in the upcoming year. Newspeak would like to make the opinions of the SocCom chairperson nominees available to the students because many of these issues will affect them directly. Each of the three nominees were asked the same questions by the same reporter. The interviews were done individually and the questions were not revealed before the interviews. Please take the time to read the responses before voting for social committee chairperson on December 11.



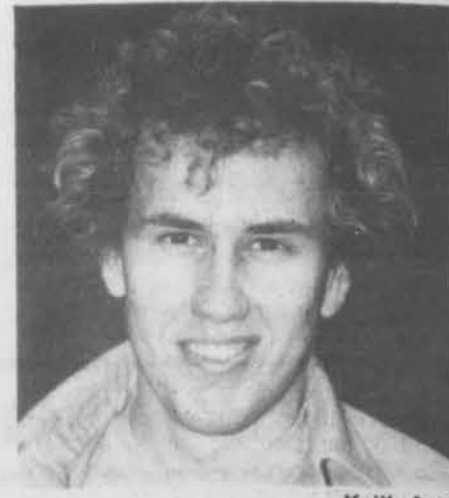
— Keith Agar

**Chris Pappas**



— Keith Agar

**Bob Sinkiewicz**



— Keith Agar

**John Stroud**

## Duties of the office

The role of social committee chairperson is a job that involves a lot of responsibility. Essential to the role is the ability to communicate, negotiate, and coordinate activities with student organizations, the Office of Student Affairs, and various booking agencies. What duties would you assume as social chairperson?

As social chairman I would coordinate activities through various agents and book the best possible acts I could. I would also oversee the running of the eight committees on the programming board, and help them in any way I could. All my decisions would be made with the help of the Office of Student Affairs and our advisor.

The social chairperson's office has many duties and responsibilities written in the constitution that they are supposed to do... some of which are mentioned here. I feel it is not the duties that are written down that are lacking, as we have always had a good working relationship with the Student Affairs Office and different agencies and booking agencies and even a really good relationship with student organizations on campus. It's the relationship with the students themselves that is not there right now. We should have more input from the students. We should work more closely with the students... like rework the structure of the committees and the social committee as a whole so that it includes more students.

As social chairman, I would try to be a leader in finding alternative ways of entertainment, and then negotiating with different students, organizations, etc... and try to get a good activity going and then follow through with the activity all the way. Communication... our main line out is the phone to agents, etc. and then on campus it's just talking to students and having maybe open meetings. Negotiations; there is always a way to negotiate an answer to anything, and we can usually coordinate that... like right now I work with L&L (Lens and Lights) coordinating the concerts.

## Composition of social life at WPI

How do you feel each of these SocComm sponsored functions should contribute to the social life at WPI?

- Coffee House
- Pub Shows
- Cinematech
- Spectrum
- Movie Program
- Major Shows
- Happy Hour

Coffeehouses are free... they are a place to relax on Thursday nights... see some good upcoming talent... it is not a big concert atmosphere that you would have in Harrington Concerts. It is a small concert atmosphere where you could do some homework and bring your own booze and drink, etc. Pub Shows and Happy Hours... they are something to keep you entertained while you're down the pub after school having a few drinks with some friends. Cinematech and Spectrum is more of fine arts and has more cultural events... classical movies and speakers. They are for, if you would rather see something other than regular entertainment... something a little more intellectual. The movie program we have so you can enjoy top run movies without leaving WPI and you know it's alot cheaper... only \$1.00 as compared to \$3.75. Major Shows are to have a form of concert for entertainment of the WPI community all at once... to go see a band or something. I feel that all of these together provide an opportunity for people to have entertainment of all types... it is not just one show... we have entertainment of all types.

The social committee is responsible for providing the students with various sorts of entertainment. Different functions are intended to do just that. The Coffeehouses are provided to the students to give them a mellow atmosphere... to sit and take a break from their studies and listen to various types of different music. The pub is primarily to allow them the same types of entertainment which they find off campus so that they don't have to travel... and we have tried a variety of different types of things in the pub as well. Cinematech and Spectrum provide the students an opportunity to view various materials such as films and guest speakers who wouldn't readily be accessible to them off campus. It's expensive but it's a type of culture which normally wouldn't be presented to the campus due to the expense. The movies series gives the students the chance to view better known acts on campus at a reduced rate... and the happy hour allows the students the opportunity to relax and have a drink and socialize with different students on campus.

The coffehouse is just like a night off to go out and have an intimate sort of evening... just have a good time. Cinematech... those are good cultural movies, not just the popular trendy type... if you want a change. The same with spectrum... they are cultural events that are different from the usual ones, but they are still good. Movies... that's on Sunday night... before the week to get to relax and have a good time before heading into the week. Major shows... those should bring the whole campus together... like for a big concert... maybe only once a term... at least they should have something to bring the whole campus together. The Happy Hour Friday afternoon... just saying hello to the weekend. Pub Shows... the Shittons are an excellent band for pub shows.

## The role of big concerts

The executive council of the student government has made it known to the current social committee that they feel students are looking for big name concerts on campus. It is no secret that the kick off mixers, bleacher and blanket concerts and seasonal weekend concert attendance is low. Do you feel that a big concert should have a role in the campus social life? Regardless of your response, how do you intend to divert this interest in big concerts into other social committee functions?

Big name concerts do have a role in campus social life, but not the whole role. I feel we should have one or two big concerts a year if possible, and if a name band is not available, we should find an alternative form of programming. I will try to find other activities and I would poll the campus to find out their interests.

I definitely feel that big concerts should and do have a role in campus life. It allows the students to see big name acts at a reduced rate and also allows them to see them on campus so that way, they don't have to travel to Springfield or Providence... they can just stay on campus. I feel the problem is not diverting their (the students) attention from big concerts but getting them to support the lesser ones as well as the bigger major concerts. Most of the acts that we bring to campus are good acts... we merely have to get the students to go and see them. There are any number of ways this could be done short of dragging them down by the hand... and most of them involve publicity. The publicity for all our programs has been lacking and currently we are involved in upgrading the publicity for all of our events in the hopes that this will encourage people to attend them.

I do feel that the big concerts have a role in the social life, because bringing the campus together like that is just a good time for everyone. It is well worth it. The way they go now we just lose, maybe \$5,000 a concert, whereas if we were willing to lose that \$5,000, get a \$20,000 show and charge \$7.00 a ticket or so, it might sell out... if it were a good enough show... it would be worth it and everyone would have a good time. The thing that is hard about concerts is that we (SocComm) put in the bid before the concert and we are locked into that bid even if we see another deal somewhere until they (the band) responds to it. It is just putting in a good bid to start with and having confidence in the band that could make the concerts go over here.

**Nominees comments continued on page 10.**

# Parents now eligible for loans under H.E.L.P. plan

The highlights of the federal government's newly amended Higher Education Loan Plan (H.E.L.P.), which will go into effect January 1, 1981, were reviewed yesterday by Dr. Joseph Cronin, President of the Massachusetts Higher Education Assistance Corporation, as he addressed a group of the state's Financial Aid Officers at The Boston Five Cents Savings Bank.

While the new plan allows students to borrow more than before, the big news is that *parents* are now also eligible for loans under H.E.L.P. Under the new regulations, a student may receive up to \$2500 per year; that same student's parents may borrow up to \$3000 per academic year, for a total of \$5500. The parental, or "PLUS" Loan, as it is called, allows parents with one or more children in college, to borrow for *each* student. And, previous family income requirements have been totally eliminated under the new amendments. The amount of the loan is based on the cost of the student's education (tuition, room, board, etc.), and takes into account other financial

aid (scholarships, grants) received by the student. The elimination of family income requirements means more help than ever before for students from middle, and even upper, income families. It will help ease the cash flow problems encountered by many of these families when their children reach college age.

The Higher Education Reauthorization Act permits dependent undergraduate students to borrow \$2500 a year up to a maximum of \$12,500; independent undergrads may borrow \$3000 a year up to \$15,000. Graduate students may borrow \$5000 per year up to a maximum of \$25,000. Students have up to 10 years to repay their loans, with the first payment due 6 months after graduation.

The "PLUS" Loan enables parents to borrow \$3000 a year for *each* dependent undergraduate, up to a maximum of \$15,000. "PLUS" Loans are not available to parents of graduate students. The interest rate on undergraduate, graduate and "PLUS" loans will be 9% (students previously using the H.E.L.P. program may finish their education at the old 7% rate).

## Chorale Christmas concert

The blaring horns of the WPI Brass Choir opened what was to be another evening of enjoyable music at WPI. The occasion was the third annual Christmas concert presented by the Women's Chorale. As a special attraction, the group was joined by Judith Ross, a harpist. Ms. Ross added a new dimension to the Chorale's first piece *A Ceremony of Carols*. As the last strains of the light, flowing harp music faded away, the Chorale under the direction of Malama Robbins began the more somber tones of the *Procession*. The piece progressed from the serious *There is no Rose* to the lively *This Little Babe*, and finally to the once again, somber *Recession*. Soprano Susan Godbout did a lovely job as soloist throughout the piece.

After a brief interval, the Chorale returned

to perform Meisels' arrangement of *Chanukah Suite*; this time to the accompaniment of Lisa Reis on piano. The program concluded with four of the *Seven Joys of Christmas*. The audience was then asked to "sing along with Malama" as it were. Thus ended another successful concert by the WPI Women's Chorale.

The twenty-one member Chorale, now in its third year, will join Anna Maria Chorus and Central New England Symphony Orchestra in performing light Christmas and Chanukah music at Mechanics Hall next Friday evening. Many activities are planned for the second half of this school year, including a Pop's Concert. The Chorale welcomes new members to come and sing with them. Anyone interested in joining should contact Lisa Reis, Box 1648.



The WPI Women's Chorale

— Keith Agar

## Masque tryouts still open

by Dave Rowell

Do you remember "The Night Thoreau Spent In Jail" Or "Seascape"? How about the "The Zoo Story", "Plaza Suite", or "Refund"? And even more recently "Rest In Peace" and the "Continuing Saga of Bungling Bill and Lovely Lil"? If you do, so much the better. Not, you should. They have been some of the productions put on in cooperation with Masque, WPI's own drama club. The Masque helps sponsor these events, as well as trips to see other drama productions around New England. The casts, as well as some of the directors and set crew from these highly successful shows have been students from WPI. Most people think that acting is hard or scary. Well, the Masque and these productions are proof that it's just plain fun. For a C term sufficiency project, Harold Dickerman will be directing a production of Tom

Stoppard's "The Real Inspector Hound". This comical spoof of the classic "Agatha Christie" style mystery promises to be a novel and exciting show, as well as a fun production to work on and see. Because the play will be presented in the beginning of the D term, rehearsals will be during C term and the casting done by the end of this week! However, that doesn't mean that you have missed your chance to tryout for the stardom. Tonight, December 9th, tryouts will continue at 7:00 in the Masque Attic (Third floor Washburn — enter through the CS department and up the stairs!). Come and tryout; Masque is not looking for stars or experience. Along with acting, people are needed for makeup, costumes, set, props... Maybe this will be the start of a career that will take you to the Silver Screen. If nothing else, you'll have a good time and get your name on the payroll!

The following is a summary of both the old and new regulations of the H.E.L.P. Program:

Old (before 1/1/81)		New (after 1/1/81)	
Undergraduate: \$2500 a year, to a Maximum of \$7500 (either dependent or independent)		Undergraduate: (Dependent Student): \$2500 a year, to a maximum of \$12,500 (Independent Student): \$3000 a year to a maximum of \$15,000	
Graduate: \$5000 a year to a maximum of \$15,000 (either dependent or independent student)		Graduate: \$5000 a year, to a maximum of \$25,000 (either dependent or independent student)	
*Undergraduate loans must be subtracted to determine total amount eligible		*Undergraduate loans must be subtracted to determine total amount eligible	
Parent of "PLUS" Loan: none		Parent or "PLUS" Loan: \$3000 a year for <i>each</i> dependent student, to a maximum of \$15,000 for <i>each</i> dependent student	
		*The "PLUS" Loan Program is for undergraduate students only	
TERM AND DUE DATE:			
Old (before 1/1/81)		New (after 1/1/81)	
Undergraduate and Graduate Students: Up to 10 years to repay, beginning 9 months after graduation.		Undergraduate and Graduate Students: Up to 10 years to repay, beginning 6 months after graduation.	
Minimum payment of \$30 per month, or \$360 per year		Minimum payment of \$30 per month, or \$360 per year	
Parent of "PLUS" Loans: none		Parent or "PLUS" Loans: Repayment to begin 60 days from disbursement	
INTEREST RATE:		Undergraduate with NO previous H.E.L.P. Loan: 9%	
Undergraduate: 7%		Undergraduate with previous H.E.L.P. Loan: 7%	
Graduate: 7%		Graduate with NO previous H.E.L.P. Loan: 9%	
		Graduate with previous H.E.L.P. Loan: 7%	
Parent or "PLUS" Loan: none		Parent or "PLUS" Loan: 9%, for students. Not eligible for graduate study loans	

## The Vapors can do more than turn Japanese

by Jim Dyer  
Newspeak staff

Last spring the better rock studio stations were spinning a much-requested record that was then available only as an import single. The Vapors' "Turning Japanese" was that song, and it rates in my book as the best single of 1980. Back home nobody had

the songs are catchy (especially "Waiting for the Weekend"), well-crafted; professionally executed, and musically interesting. However, whereas "Turning Japanese" had a bright sound mix, the other songs have a bit of a different sound. This is because the other songs were mixed while the band was on tour, bringing

## vinyl views

ever heard of it, yet the tune is so catchy it stuck in my mind all summer.

The Vapors live up to their name: a vapor is something intangible, hard to define. The cover of their debut album, *New Clear Days*, can best be described as a blur. The title is a clever and ironic pun (nuclear days) that gives a hint as to the reason for their certain image. The view expressed in the second cut, "Sixty Second Interval," describes a detachment resulting from the international death wish known as nuclear war: "They're out tonight/The masks are down/And friends meet strangers and strangers are friends/And pain is passion and passion must end"

Vocalist and rhythm guitarist David Fenton is the one behind all this lyrical cynicism. The melodic, vocal, and lyrical capacity he possesses is comparable to at least one of the Beatles. The lyrics are typically elegant, which means that much is said with few words. For example, in "Letter from Hiro," he tells us, "Communication leaves me out of touch/You say it means nothing, well nothing much/Like the sign on the door, too hard to see, too soft to touch/The Age of Reason is out to lunch"

The question on almost everyone's mind is this: Is the rest of the album comparable to "Turning Japanese"? Good question! All

springy bass and solid drumming to the forefront. This rhythm section lays down clever, efficient rhythm patterns that demand to be heard, so such a mix could be considered somewhat redundant. The Vapors themselves prefer the sound of "Turning Japanese," where the melodic/harmonic sounds of Fenton and lead guitarist interplay with the rhythms.

In addition to life after the bomb/WWII, the album also takes to issue such topics as loneliness, boredom, broken relationships, boredom, government thugs, and boredom. Fenton weaves a disillusioning picture, but the lyrical pessimism is offset by a musical form of optimism. Such an uncertain stance typifies the "vaporish" style. In "Turning Japanese," for example, "I've got your picture/Of me and you/You wrote 'I love you,' I wrote 'Me too'/I sit and stare at it there's nothing else to do" Here is a tale of an ended romance in which the poor guy is depressed to the point of turning Japanese, but the music attending this situation is so fun and vibrant.

But then again, isn't that the point of rock music? To be an escape from a lousy situation? If so, the Vapors have come up with a great way to do it — what better escape than to vanish into thick air?

# classifieds

NEWSPEAK will run classifieds free for all WPI students, faculty and staff. Free classifieds are limited to 6 lines. Those over 6 lines must be paid for at the off-campus rate of 25 cents/line. Deadline is Saturday noon for the following Tuesday issue. Mail to WPI Newspeak Box 2472, or bring to WPI Newspeak, Room 01, basement, Sanford Riley Hall. Forms must be filled with name, address, and phone no. for ad to be printed.

NAME \_\_\_\_\_ PHONE \_\_\_\_\_

ADDRESS \_\_\_\_\_ TOTAL ENCLOSED \_\_\_\_\_

AD TO READ AS FOLLOWS:

Allow only 30 characters per line.

\_\_\_\_\_ 1  
 \_\_\_\_\_ 2  
 \_\_\_\_\_ 3  
 \_\_\_\_\_ 4  
 \_\_\_\_\_ 5  
 \_\_\_\_\_ 6  
 \_\_\_\_\_ 7  
 \_\_\_\_\_ 8  
 \_\_\_\_\_ 9

CHEM ENG or subsistence? Which is more important? That is the question.

MYSTERY T: Don't despair, you'll find it one of these days, and when you lose it, I hope it won't be at the LLCP. Looking for a good time?

STAFF, DONATI SHOE CO.: For \$20/sq. inch you can do the floor of Harrington Gym and collect from Gardner Pierce. Good luck. By the way, is satisfaction guaranteed or your...?

DEAR "STANLEY":  
 The Clash is the only group that matters! By the way, we'd like to record the sound of you being strangled for our new album (seeing as John Denver's already been used!)  
 —Jimmy Ziploc

J.D.: When you play "Wild Thing" for that pledge, here's the music for it.  
 AA-DDDEE-DDD (4 times)  
 GAGA... (4 times)  
 (Repeat)  
 —J.G.

THANKS FOR WEARING the new pins! Phi Punka Punka!!!! Has everyone FADFTCP?????

RIDE NEEDED: for Christmas vacation to Phila. area, or NJ or Penn. Turnpikes. Will share expenses. Please write to WPI Box 2341. J.R.

RIDES — \$5 — leaving Dec. 19. Passing by Hartford, Danbury, and everything else along I-86 and 84. Last stop, Peekskill, New York. Contact Box 1934.

FULLY FURNISHED ROOM for rent. Available immediately. If interested call 755-9616.

BOX 2149, Chemistry class I want a piece of your mind! You smell nice. I stare not knowing what you say. — JIM

LOST: Black kitten w/white markings missing since last Tuesday (12/2) from Dorm H. If you've seen her, please drop a note to box 2169.

WONDERING HOW to spend your holidays? VACATION ON THE COAST! Special rates & fringe benefits for those who act now. For more info, write THE STUNT MAN, box 69, Worcester, Ma.

TO THE RUDE AND VERY CRUDE WACCERS.... I won't sink to your level ... yet! You haven't heard the last from me yet, so BEWARE!!!!!!

JIMMY SARAN-WRAP — You were referred to us by Dr. Johnny Cellophane. Our program offers complete success. Learn to Pogo, Slam-Dance and wear bright colours.  
 —The Sisters of Tau Gamma Mu

FOR SALE: Sanyo (FT402) Cassette car stereo player with two Realistic speakers for \$50. If interested contact Gary, Box 2221 or call 754-0258.

JC — WHO IS IT??????? The Rebmulp

KELLI — have a Great Day!!  
 —Your Gamma Angel

TO THE PD: Did you start the T crisis??  
 — A Dust Biter

BUNNY, the last nine months have been just great, and remember this is only the beginning! Love, Bunny

STUCK FOR CHRISTMAS GIFTS? Now for sale, from the World's Greatest Ashhole. Volcanic Ash from Mt. St. Helens, shipped perfectly from Yakima, Wash. to me to you. 4-8 oz. Baggie, with ingredients, \$1.00. Box 1236.

LARRY, with whom will you room next year? Isn't my hat strange? Write me #2224. Your Pal, IBM

LINDENHURST??? TO BE CONTINUED...

FOUND: A pocketwatch on the West Street Sidewalk. If this is yours, contact Ben at 757-4338 or Box 1724 and describe it.

TO D AND H, Why don't you combine your tastes and wear a purple alligator? K and J

DO YOU ADMIRE TOUGHNESS in a man? Then the TOUGH GUY FAN CLUB is just for you!!! This organization is currently forming, so there's still time to join in on the fun, which will include TOUGH concerts at this year's basketball games, etc. Stay tuned to the classifieds for more information!

STODDARD, you guys got killed in the fight! Stay in your rooms next snowstorm. M4

MR. P: Boston was great; we'll have to do it again some time. Maybe after B-term, when you escape from the mental institution or the Navy, whichever comes first. Meanwhile, enjoy your day turkey. Your Dimey Date

D PHI E PLEDGES — Congratulations on a terrific job Saturday!! Keep up the good psyche!!  
 — DPESister

MR. BILL: Football Pads just don't cut it on the court, so shape up! You have to show V.V. the right way to score with chicks.  
 D. Duo

ANDY: Washington must have agreed with you — you look slightly out of shape. (Did the rabbit die?????)

CLIK — Commander Pocal this is Houston Control, are you ever coming DOWN?  
 —Clik

HEY KEVIN — Did you know 7 is the key to live?  
 "7"

WHAT DID THE BUTLER DO ANYWAY?

TO OUR THANKSGIVING TURKEYS: We thank you so much for letting us "gobble" to our hearts content! Hey, by the way, Sappy, you're gonna make a fine (?) wife for someone someday ... how you perform in the kitchen!!! Thanks again!!!  
 — JBN & LBN

DEAR CHRIS: From one "prepette" to another. Hope you're feeling better. Love your Phi Sig Sig big sister.

TO THE ITALIAN: Have a nice lonely ride to Port Chester. Love, Mr. & Mrs. Oger. P.S. Regards to the wench

STELLA KUNIAKI TANAKA: Have a happy birthday!!! Love, Skate, Pal, Shady Brady, Mz. Liz, Ari Gato

WANTED: Members for a new "Forority" — (combo. Fraternity and Sorority). Male and Female pledges now being recruited. If interested, please reply through the classifieds.

IF ONE IS 7.5 cm and the other is 7.5 cm, there is 15 cm of room. Is that enough??

BUFU: Have a nice Thanksgiving. Love, Mr. & Mrs. Oger

MIKE C — I know I could beat you in backgammon if you wouldn't cheat so much. The young lamb is a lamb. Did your feet get cold?  
 —Another Chance

PHASE LINEAR 4000 Autocorrelation PRE amplifier. Reg. \$600 asking \$370. Great condition. Call Pat at 757-2947

BF — It's as great now as it was then. I love you!!!  
 —LL

FOR SALE: 1 pr. of "Little suspenders". If interested write Bob Rubare Box 19524 or call: CON-3861.

DA FROM RI: Have you listened to Springsteen or Seger (Seiger) lately?  
 Love MF from MA

HEY SNAKE, (R.H.) She loves your meaningful stares. I thought you said you weren't gonna get involved with her? No matter. She's just another fox, isn't she? Time will tell.  
 —Love your Master of Fate

DEAR M.S. FROM MA, I think its a little late for a bike ride before the snow. Let's plan for a road trip in our mind to some far off beautiful place. CC from PA. P.S. there is no warm places in the snow in PA. Is MA different???

SCREECH, CRUNCH, GRIND, CLATTER. No, it's not punk rock that your car is singing. To find out what the real problem is, have your vehicle checked out by first-rate mechanic. John 799-9166.

FOR SALE: Peavey "Deuce" 120 watts w/2 12" black widow spkrs. - \$450. Peavey T-60 Guitar - \$225. Dorado Bass - \$150. Call Mike 753-1266 or Box 2028.

HEADS UP — A premature victory celebration, for all Hub-a-teers and anyone else ... 4-L, Tuesday the 9th. P.S. Bring your own drugs or call ahead for reservations.

SOCCOMM — Thanks for all those pizzas IFC Weekend.  
 —Zeta Psi

WANTED: TWO WPI FEMALE students to sell basketball programs at the WPI Home Games. Good hourly pay, plus commission. Make an appointment for an interview with Coach Kaufman.

HEY ARAGOSTINA, I think you're unreal. I'm not just Bostin' on you either. (cappin?)

GREAT BUY! on Scott Superlight Ski boots, skied 6 times, black bottom shell and white top shell, size 9 med. Adjustable lean, flex, and fit; asking only \$150. Contact Pat at Box 1096 or call 753-2956.

TYPING — Fast, accurate typing of your papers or projects. Campus pickup and delivery. Call Debi Brodin at 393-7242.

EARN UP TO \$65.00 for short-term participation in a National Institute of Health supported research study of Biological and Psychological Correlates. The men selected must be between the ages of 18-23 years. For additional information please call Mrs. Meola at 757-6934, any weekday afternoon.

FOR SALE: 1 Cleveland trumpet. Asking \$80. Call 757-2964. Ask for Pat.

DESIRED: Bedwarmer for two frigid males. Must be able to adjust to extremely cold conditions and small surroundings. Ideal for anyone interested in undercover work. Contact Box 156 or 1466. Eq. Op. Emp.

"MEMBERS OF THE HUMAN SPECIES write poems, sing songs, and renounce kingdoms, all in the name of sexual reproduction" — Curtis, Helena. Biology. Worth Pub. Inc, 1979, p. 218

DOUG IS BACK!!!HURRAH!!!

M — Friday night was wonderful — I'll always remember it when I look at my matches and ticket stub! Thanks for the memories and the pleasure of your company. — Unsuccessful pool player

THE SWEETHEART of L&L has hurt herself, and we all feel just miserable about it! Hope you're feeling better soon!

HE DOESN'T want me, he doesn't care. I tried so hard to let him in, but he doesn't see me there. What else can I do, when someone doesn't want you?

TO THE B-52's girl who wears a pin through her nose (TAB in D325?) — I want to get to know you real well. Call me at 6060-842, or meet me on planet Claire (53 mi. w. of Venus), Downtown, under the strobe light. Signed, the B-52's Boy.

DEAR BULLIBLE NIBROCKER — The lobsters invaded the Alumni pool for only five minutes — but I've had you hanging out the window for three weeks. ARAGOSTINA

IS IT RING around the nose? I want you; I need you. I have you, but I don't love you.

LOVER BOY — Why do you have to be slow to be fast?! P.S. That's terrible!

MALE CIGARETTE SMOKERS NEEDED: Earn up to \$70.00 for short-term participation in a National Institute of Health supported research study of Biological and Psychological Correlates. The men selected must be between the ages of 18-23 years. Cigarette smoking will be required during testing sessions. For additional information, please call Mrs. Meola, R.N., 757-6934 any weekday afternoon.

FOUND A PUMPKIN in your laundry lately??? Ask Jean in D205 about it. She's an expert on the subject.

FOUND: Bracelet at the Marathon Games. Send descriptions to Patty Ficociello, Box 898.

WANTED: Ride to Buffalo, New York, December 19 or 20. Please contact Box 2096 or call 757-3771.

# Mechanics Hall to host evening of dance and music

The Massachusetts Dance Ensemble, in conjunction with The Hawthorne Tree trio, is presenting a program of dance and music at Mechanics Hall on Sunday, December 14, 1980 at 7 p.m. Participating in the Ensemble will be Peggy Brightman, Shirley Benjamin, Patt Adams, Bill Doolin, Laura Hays, Joan Henry, Wendy Zeeman Blom, Jennifer Lin, and Stephen Nunley; and in The Hawthorne Tree, Sheila Reid, violinist, Linda Krouner, pianist, Lawrence Pratt, cellist. The trio will have a guest artist, Nella Hopkins, violin, and Claudette Lovely, viola.

In a program divided equally between dancers and musicians, the first part will be dance done to taped music; the second will present The Hawthorne Tree chamber ensemble alone; and the concluding section will combine dancers and musicians.

This event is made possible by a combination of the following state and community funding: a special grant to the Massachusetts Dance Ensemble (MDE) from the Norton Company, Worcester, to awaken interest in modern dance and to encourage interdisciplinary cultural activities; a technical assistance grant to Mechanics Hall from the Massachusetts Council on the Arts and Humanities (a state agency whose funds are recommended by the Governor and appropriated by the State Legislature) to make the Hall financially accessible to local cultural organizations; a capital expenditure grant from the Worcester Rotary Club for sound equipment; and a grant to MDE from the Massachusetts Council on the Arts and Humanities toward the commissioning of three new works by Massachusetts choreographers in collaboration with composers and graphic artists.

All the newly commissioned works will be presented on December 14. The dances are: "Companion Piece for Two" by Dorothy Hershkowitz, "Paths Whose Turnings" by Martha Armstrong Gray, and Part I of "Geomantics" by Peggy Brightman. The musical score by Otto Laske for "Geomantics" was funded by the state grant. This composition "Terpsichore" was made at the Structured Sound Synthesis Project at the University of Toronto, Toronto, Ontario, and was premiered November 14, 1980 at the International Computer Music Conference in New York City.

Formed two years ago, the Massachusetts Dance Ensemble is the



only professional modern dance company in central Massachusetts. Under the artistic direction of Shirley Benjamin, formerly of the Joffrey Ballet and the Concert Dance Company, and Peggy Brightman, a founding member and former principal dancer with the Concert Dance Company, the group has won wide acceptance and has been recognized as one of the leading dance groups in New England.

In 1979-80 MDE was in residence at Clark University. As an affiliate in Dance, it provided workshops for Clark University students, instruction in the Department of Visual and Performing Arts, and a performance for the public. This spring, after a viewing, it was invited to be on the roster of the Massachusetts Touring Program, a program under the auspices of the New England Foundation for the Arts. Listed as a recommended dance group by this important performing arts sponsor, MDE is one of only six dance companies selected to tour in Massachusetts.

Just recently the Massachusetts Dance Ensemble received an ad-

ditional grant from the Greater Worcester Community Foundation to partially fund a gifted student and lecture-demonstration program for students of private and public schools in the greater Worcester area. As MDE wishes to inform as well as entertain, these grants are facilitating its goal to make outstanding traditional and contemporary choreography accessible to all audiences, particularly those without previous exposure to dance.

"We are grateful to all the local people who are supporting our endeavors," says Shirley Benjamin. "And we are most appreciative of the interest the Norton Company has taken in encouraging local cultural activities. Without Norton Company's assistance this December 14 program would not be possible."

Sheila Reid, music director of The Hawthorne Tree ensemble, is a member of the Worcester Orchestra, founder of the Music Alive chamber program for children, and is on the faculty of the Performing Arts School of Worcester; Linda Krouner is currently teaching piano at Emmanuel College and Leslie College; Lawrence Pratt is a faculty member of the New England Conservatory Preparatory Division and has performed with the Springfield Symphony Orchestra. Guest artists Nella Hopkins and Claudette Lovely are both members of

the Worcester Orchestra, with Ms. Hopkins also teaching at the Performing Arts School of Worcester.

Tickets, which will be on sale at the Ben Franklin Book Store and at Mechanics Hall the night of the concert, are \$5.00 for adults and \$2.50 for students and senior citizens.

## Correction

The chairman of the Dorm Advisory Committee is not Stephen Zinkus, as stated in the November 18 issue of *Newspeak*. Stephen Russo is the chairman of the committee.

### Crossword Solution

C	A	R	G	O	S	C	R	A	M		
O	R	I	E	L	S	T	O	U	T	E	R
M	I	N	E	D	P	E	N	N	A	M	E
B	E	G	T	A	R	E	S	L	E	D	
L	O	G	I	C	A	L	P	O	N	D	
	O	M	I	T	T	A	S	T	E		
S	C	A	R	E	D	P	O	I	S	O	N
P	A	L	E	R	M	O	A	N			
A	R	E	S	C	O	U	N	T	E	D	
R	O	B	O	A	R	D	I	A	M		
E	M	I	N	E	N	T	F	L	O	R	A
D	E	F	I	L	E	S	R	I	P	E	N
N	E	B	T	S			O	B	E	S	E

## Elections for Social Committee Chairman

will be this

Thursday, December 11

in

Daniels Hall

## EXERCISE AND FITNESS ENTHUSIASTS

Should your interests include Anatomy, Body Conditioning, Exercise, Injury Rehabilitation and Physical Therapy, Nutrition, Physical Fitness, Physiology... then our organization would like to speak with you.

We are presently seeking Bright, Energetic and Enthusiastic individuals with experience in any of the above areas of similiarly related fields.

This opportunity is of an instructional nature so you MUST be extremely personable and be willing to meet and work directly with the public.

Hours flexible. Excellent compensation.

Interested candidates should mail letter or resume outlining qualifications to:

LMD Co.  
PO BOX 271  
Worcester, MA 01601

Equal Opportunity Employer m/f

## Jeanne French triumphs in her return

# Private Lightning makes a t

by Jim Dyer  
Newspeak staff

Last Saturday night was "Bleacher and Blanket #3," a concert with Private Lightning and Jeanne French. We forgot to bring a blanket, but they let us in anyway, stamping "W&V" on our hands. What "W&V" stands for may well be the biggest mystery since the legendary "W&C" basketball team of '79-'80.

Jeanne French and the band took the stage, and a considerable improvement from her last show here (September 20th) was immediately apparent: the sound quality had taken a quantum leap. This, I later discovered, was because they now had a sound man who they were used to working with. Unlike the last time, Larry Luddecke's keyboards could actually be heard. The sound from the guitars of Bobby Keyes and Leo Egan were distinct and clear, which made all the difference.

It's hard to avoid drawing comparisons between the two performances, so I won't try to. Besides, it offers an interesting viewpoint one rarely has a chance to observe. I described her band's last performance as "competent, if not very inspired" — last Saturday, we saw what a little inspiration can do: the set was highlighted by more extended instrumental bridges, which came across very well. Jeanne French herself sang with more openness — also, her voice seemed more apt to the material she was singing, whereas last time she tended to sing contrary to the music...

The sound, simply, was great. Their spirited set of rhythm-and-blues were shaped with the crisp tones of Egan's Telecaster and some imaginative licks from Keyes' Gibson SG. The backing vocals, supplied by Nancy Roche and Debby Scott, came through at just the right volume. The rhythm section rumbled along with Russ Keyes on bass and Glenn Evans on drums.

While Lens and Lights took the stage to set up for Private Lightning, I had the opportunity to speak with Jeanne French. She agreed that the band had improved — "The guys are loosening up more." She said she enjoyed it when the band was playing through a good instrumental bridge: she just steps back and listens.

Her new debut album, *Diamond in the Rough* (Columbia), has not been getting much radio exposure in New England. Though the LP is among the

top forty in places in the west and southwest, there seems to be no room on the playlists for it here. She attributed this to the fact that the major stations in the area are geared to new wave and heavy metal music, bad news for an r&b artist.

After talking with her, we returned to our blanket (or would have, if we had brought a blanket) in time for Private Lightning. The set started with a Lens and Lights special: a few minutes of flashing blue and red lights. Drummer Scott Woodman ran out and started up a drum solo, followed by bassist Steve Keith and keyboard player Eric Kaufman. Guitarist Paul Van Ness joined him, followed by his sister Patty, the violinist. Vocalist Adam Sherman completed the lineup, and they launched into the first song.

At first, their performance suffered from technical difficulties; quite a let-down from the crisp sound of the preceding act. One thing that was especially noticeable, the violin simply could not be heard. Fortunately, most of the problems were fixed shortly into the set, and Private Lightning's unique sound reached the audience's ears at last.

Sherman gave a maniacal performance, to put it mildly. His vocal style was an aural interpretation of his wild eyes. Paul's no-frills guitar playing featured some combined licks with sister Patty's violin and/or Kaufman's keyboards, to very good effect. The set rocked solidly, with a good number of impressive instrumental bridges. The best bridge came in the last song, "Physical Speed," a song so intense and so demanding of attention that the audience was helpless to do anything but give that attention.

The band obviously enjoyed themselves onstage — they were all smiles. The songs featured a number of varied arrangements, ranging from classical violin-and-piano breaks to countryfied fiddle rounds to unique sounds of their own — throughout, a splendid time for all. And a more photogenic violinist would be hard to find.

After the set, followed by a roots-rocking encore, I spoke with Paul Van Ness. He explained that the band's original concept was a lineup of guitar, violin, bass, and drums. He and his sister qualified for the first two of the instruments, so the second two were culled from the want ads. In the process, they acquired a keyboard player, thus expanding upon the original concept.



Paul Van Ness of Private Lightning

Though part of the material for their first album, *Private Lightning* (A&M), was written shortly before it was recorded, a goodly amount of it comes from the band's earlier days. This is a strategy that Van Ness plans to continue with, in order to keep successive albums in line — to stay in touch with the roots, that is.

Van Ness, understandably, is less than thrilled with the album's lackluster promotion on the national scale. Apparently the album's promotion was lost in the shuffle as A&M went through some organizational changes. The ultimate result is that most of the country has not heard nor heard of Private Lightning.

New England is the exception to this, and Van Ness is very pleased with the exposure their music receives locally.

A result of this is that their concert appearances do not constitute a "tour" as such: they play three or four nights a week and go home after each show, a pattern they have been following since June.

A new album is on its way, out by June at the earliest. Until then, there will be plenty of live appearances. Van Ness said that he liked the response the band got in Harrington Auditorium that night. In regard to the magical moment in "Physical Speed," he told me, "We feel the same" on the stage as the audience does. The exhilaration keeps them going.

Private Lightning will be playing all over the place. Jeanne French is trying for a chance at the Sanctuary. She'll also be at Holy Cross tonight, for anyone interested in seeing more of her.

## Creativity Colluquium belatedly berated

by M. Higgins

The so-called Creativity Colloquium gets an AD for effort (or rather idea) and a mere AC for execution. The idea behind it was basically sound — highlight and provide forum for creative and artistic talents of the WPI community, in effect, a WPI Arts Festival. The colloquium suffered from an unprofessional carry through. The artwork and photographs were haphazardly mounted for display on upended card tables with no cohesive theme to the arrangements either by artist or medium. The live acts did not flow smoothly from one to the next, but they did draw quite a few in attendance. Admirably, a number of Tech students and faculty participated, but not as many as would have been expected for a school of this size.

Overall attendance was moderate ranging from a few people meandering

about munching pretzels and downing beers (how uncreative) to a capacity crowd in the main hall for some of the musical performances which ran the gamut from a solo flautist to a four-piece rock and roll band. Quite a lot of people were asking if there would be an encore colloquium in the spring. If so, and the response certainly warrants it, hopefully an even larger section of the student body can be involved. Although Higgins House is a lovely setting, a more visible and accessible location of the event would be the Wedge. Another thing to avoid in the future for such events is a clique-ish attitude with condescending advertising — chastizing the WPI student body as if the lowest form of life here are those students with little artistic interest who dare to pass up the opportunity to see art and thereby demonstrate their lack of culture.



Cross sectional view of the creativity colluqia.

— John Mar



# Thunder in Harrington



*Jeanne French put on a rousing performance.*



*Adam Sherman lead vocalist.*

**Concert photos by  
John Mar & Steve Knopping**



*Private Lightning combined hard rock with a touch of new wave.*

# ...SocComm nominee interviews

## Student Apathy

Chris Pappas

What plan of attack would you envision to relieve students apathy towards social committee events?

Students will only participate in activities they want, therefore I will need ideas from the student body so that I can find activities they want to participate in. Basically my plan of attack would be more student involvement.

Bob Sinkiewicz

A step towards relieving student's apathy toward social committee events would be possibly getting more students involved in the social committee body as a whole... directly participating in the planning and the producing of events... thereby getting a better cross sectional area of the view of different interests of the people on campus. This could probably be better done by having regularly scheduled monthly meetings with the whole social committee as well as the weekly meetings of the different subcommittees. Publicity should also be beefed up at our school and possibly at neighboring schools as well... beef up the publicity that the events get and try different ideas is what we've been planning to do.

John Stroud

The two events that the students have much apathy towards right now are some of the pub shows and the major concerts. With the pub shows... it is just that the drinking age has hurt that alot... but having a good band in there would still make the show go over. The same with Harrington... if there was a good concert in there... a really good one... then there would not be apathy towards it and people would want to go... they would buy the tickets in advance.

## Publicity of events

What do you as social committee chairperson plan to do about the lack of information available to students about upcoming events?

More publicity and more creative ways of publicity are needed. For this to be accomplished I need more student involvement as well as more organization in the social committee itself.

Publicity has definitely been lacking at past events. We have different ways of remedying that situation available to us. Numerous things have been discussed, such as a teaser in the cafeteria... we have done that with different coffeehouses and playing the music on the air (TV bulletin board) so that the students would be able to hear it. I think also that we should put a list of some of the songs that the bands play in the posters themselves... to give people an idea of the type of songs the band plays... a lot of times the students don't know the band but they know their songs. Better posters in more numerous places has also been looked into, which should be a must.

The information for most events is on the calendar that social committee prints up, but even those could be made better, because right now they have all sorts of arrows and lines pointing all over them... and they are pretty strange and hard to read. Publicity, using the TV studio equipment and to get the stuff all over the campus could help... and along with snazzier posters. Also, large meetings with the whole student body, if they would show up, could get the events publicized because there is really no better publicity than by word of mouth, and people talking about events, because they are going with other people, would get more people there in the end.

## Peddler funding

The Peddler '80 went into debt because there was not enough money in the budget to cover photographic supplies and other organizational expenses. The 1981 budget is not even big enough to cover the printing due to the deficit from last year. Yet, the major question is, why has the relative amount of money given to the book gone down so drastically since 1968? Do you feel the student body will be content with a small paperback yearbook? If so, there is no problem. If not, what do you propose to do, as chairman of the committee which provides major funding for the yearbook, to remedy the situation?

I feel the yearbook is an integral part of WPI and the whole campus benefits from the Peddler and therefore it should maintain its quality standards. When making the budget for the upcoming year I will discuss with the Peddler chairman, what an adequate budget would be.

I don't think the student body would be content with a paperback yearbook. I know I was disappointed in my freshman year yearbook, which was the red one. I also know that as social chairman, I'm not a dictator. The committee is run by a board consisting of the chairman and aides of the social committee chairman and the social committee advisor. The point brought up is a very good one and Peddler definitely needs to obtain more funding... but the chairman does not have the power to enact his own initiative and give out money as he chooses. I feel if the Peddler submits this proposal as it was submitted to me, that they would have no problem in getting their increased funding from the social committee.

The money for the Peddler and J.P. Weekend also, is voted on by the Executive Council so that it is taken out of our budget in "ample" amount... that is what they (the constitution of student body) call it... at the beginning of the year. So if they (Peddler) showed to the executive council what the "ample" amount they need is, I'm sure the executive council would vote on it.

Before answering this question each candidate was shown a copy of the 1968 and 1980 Peddler. They each were also familiar with the budgets of 1968, 1980 and the proposed 1981 budget.

## Role of Office of Student Affairs

How do you envision your relationship as Social Committee Chairperson with the Office of Student Affairs... Dean Brown, Glenn Deluca?

I will look to our advisor Glenn Deluca, and Dean Brown and the Office of Student Affairs when making important decisions. I'm sure their input will help me make the best possible choices for the whole WPI community.

I feel that Social Committee is run by the students to bring social entertainment to the campus to benefit the students. Dean Brown and Glenn Deluca are there as advisors to help us in achieving this task. Dean Brown doesn't have that much to do with it any more as Glenn Deluca has been put in charge of the social committee, but he is still there as a knowledge pool that we can tap from his experience from previous years. While Glenn Deluca is our current advisor... I am sure that the working relationship we have had with Student Affairs will continue in the future. Glenn Deluca is primarily there to add a sense of coherency to the social committee... he is the one that is here from year to year and constantly is in the advisory position. His primary function is to advise us and to sign the release forms, contracts, etc... and as advisor I feel that he is doing a pretty good job.

The Office of Student Affairs is a great place and I drop by there every day, because I enjoy it. I look forward to working with Dean Brown... he is a good man. I have a working relationship with Glenn Deluca and I would probably continue it in that fashion, just remembering that he is just our advisor.

## The benefits of a difficult office

Knowing that Social Committee Chairperson has a very rough time-consuming job, what are the benefits of being the social committee chairperson?

The benefits I would receive from being social committee chairperson would be, meeting agents, experience in coordinating events, experience in leadership, and the satisfaction I would get when an event goes over well.

Comments

My main goal as social committee chairman would be to get the social committee working again and mainly to get more people involved, so that I could get activities the students will enjoy.

The physical benefits of being social committee chairperson aren't exactly worth putting the time into being chairperson... you have to really want to do it for other reasons. I myself want to do it for personal reasons... you get the sense of self achievement out of doing it... I know I felt that in managing the pub entertainment committee... and I feel that I just enjoy doing it.

I do not know...right now I don't think there are any, but hopefully later I'll be able to turn the desires and wishes of what the campus wants to see into reality.

CROSSWORDS

ACROSS

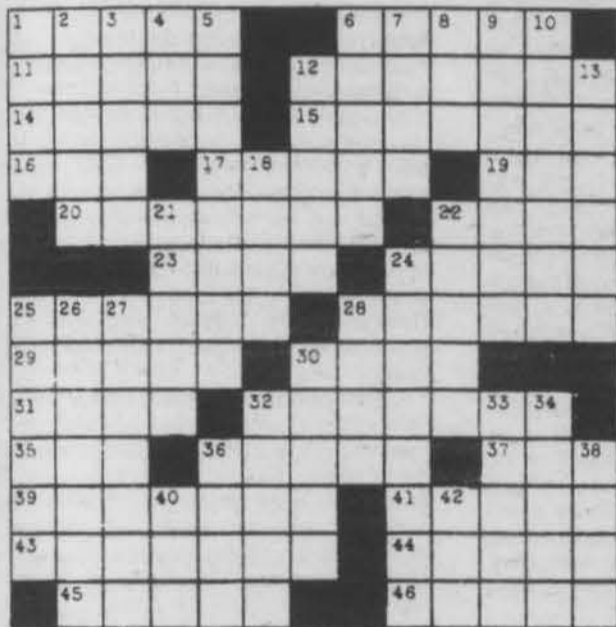
- 1. Lading
- 6. Go away!: slang
- 11. Bay window
- 12. More bulky in figure
- 14. Dug for ore
- 15. What Elia was to Charles Lamb: 2 wds.
- 16. Ask humbly
- 17. Biblical weeds
- 19. Shepherded
- 20. Reasonably to be expected
- 22. No place for a "big fish"
- 23. Fail to include
- 24. Slight experience
- 25. Intimidated
- 28. Toxicant
- 29. Having less color

- 30. Sound of distress
- 31. Son of Zeus
- 32. — out, disregarded
- 35. Donnybrook
- 36. Homonym of "bored"
- 37. "Take it on the —," flee
- 39. Celebrated
- 41. Plantlife of a region
- 43. Taints
- 44. Bring to fruition
- 45. They "turn freemen into slaves"
- 46. Overweight

DOWN

- 1. Search thoroughly
- 2. Sprite in "The Tempest"

- 3. A Beatle, formerly
- 4. Turn to the right
- 5. Veteran: hyph. wd.
- 6. Make obdurate
- 7. Swindles: slang
- 8. Shutout-spoiler
- 9. Puzzled; perplexed: 3 wds.
- 10. Souvenir
- 12. Nursery rhyme "Jack"
- 13. Blush
- 18. Corrosive
- 21. Pierces with the tusks
- 22. Home beautifier
- 24. Moving alternately in opposite directions: 3 wds.
- 25. Used frugally
- 26. Struck and rebounded
- 27. Herringlike fish
- 28. Utter profusely
- 30. Protective ditches
- 32. Strobiles
- 33. "Go to Gretna Green"
- 34. Accepts the hazard
- 36. Ceinture
- 38. Shaggy neck hair
- 40. Pen point
- 42. Ad —, extemporize



Crossword Solution on Page 16



The Society of Women Engineer's Christmas tree was lit at a ceremony on Friday. The tree will remain lit in Harrington until Christmas. — Kevin Santry

# Pathways

Fall 1980

COMING SOON

At the paper box in Daniels Hall

Pick it up!



2-1 after first week of season

# Hoop team breaks fast

by Richard Goldberg  
Newspeak staff

The WPI basketball team began its season on a positive note last week, emerging victorious in two out of three games played, defeating highly touted Wesleyan 72-63 in their home opener, losing a heartbreaker to Connecticut College 56-54, and demolishing Concordia College 95-52. The Engineers have shown the potential not only to be one of the best teams at WPI in recent memory, but also to be one of the most exciting.

The opener last Wednesday pitted WPI and their new run-and-gun offense against Wesleyan University, ranked third among New England's division III teams in the preseason polls. WPI knew that they had their work cut out for them, but they were also aware that they carried the potential to defeat a highly rated squad. The junior varsity had just come from behind to down Wesleyan's JV by an 80-79 score when John McNamara canned a free throw with seven seconds left to play, and there was a feeling of upset in the air.

The Engineers stormed out to a 13 point lead at 21-8 on the strength of eight quick points from Jim Petropoulos and looked like they might blow Wesleyan out of the gym. Wesleyan was not about to roll over and play dead, however, and managed to cut the deficit to four points (33-29) at the half behind some hot shooting from Dan O'Connell and Steve Maizes and some cool foul shooting from WPI. Wesleyan now began to sense they could take the game and their determination to achieve that goal kept the crowd of 450 on the edge of their seats for the better part of the next 20 minutes of play.

WPI's shooting became very erratic and the lead bounced up and down like a yo-yo. Wesleyan quickly tied the score at 33 but WPI moved right back out to a 41-33 lead, only to slow down long enough to allow Wesleyan to come back and take the lead at 45-43, their first lead since the score was 4-2. Tech then scored five unanswered points to take a 48-45 lead, but it was only a

minute before the Engineers found themselves trailing for the last time at 51-50. Again, an immediate flurry put the score in our favor at 57-51 but Wesleyan remained stubborn and fought back to 57-54 with six minutes remaining. For the next 2½ minutes not a point was scored, with WPI playing strong defense to keep Wesleyan off the board and making numerous mistakes on offense to avoid putting the game away for themselves.

Bad feelings about this game now seemed to hang over the stands of Harrington Auditorium, but Shawn Moore decided to take control. He first grabbed a rebound and layed the ball in for two points, then took a nice feed from Randy Byrne (who quietly scored 17 points of his own) and blew by his man for a layup, and finally came right back down court after a Wesleyan hoop to score a three point play. All this in a one minute span gave the home team an insurmountable 64-56 lead with 2:23 remaining. Shawn ended up with 14 points as did Jim Petropoulos. Russ Philpot added 10 to give WPI four players scoring in double figures.

The Engineers did not have much time to savor the victory, as they traveled to New London, Connecticut on Friday to take part in the Whaling City tip-off tournament where Connecticut College also played host to the Coast Guard Academy and Concordia College. WPI watched as Coast Guard advanced to the finals, pulling away from Concordia in the second half to win by 19, before taking to the floor to face Connecticut College and two 6'8" centers in their first round game. The Engineers played good defense but were miserable offensively (shooting 9 for 27 from the floor) through a first period that ended with the host team in front by a score of 25-21. The only thing that was evident from the 20 minutes played was that we were not dealing with top flight officials. For instance, one referee failed to make a call when a Connecticut College player went about 6 inches out of bounds and later extended his regrets to Coach Kaufman by joking about the call. Somehow our coach didn't see the

humor.

Second half action saw continued sluggishness from the WPI offense, while Connecticut's 6'8" freshman center Peter Dorfman found the range for 10 points and Tom Barry added six more to give the home team a 43-33 advantage with eight minutes remaining. It was at this point that the team showed great character by shifting into high gear, hustling all over the court, and pressing the young Connecticut College squad into mistakes. The Engineers reeled off a 17-5 spurt with Ed Walls scoring four baskets and assisting on two others, to put themselves on the top side of a 50-48 score with 3½ minutes remaining. The two teams traded baskets to 54-54 when Connecticut got the ball with one minute to go and decided to play for one shot. They got the ball in to Dorfman, who let go a shot with seven seconds left that bounced off the rim and out towards Walls, who was hammered by three Connecticut players. The whistle blew and a foul was called on Jim Petropoulos, outraging the entire WPI bench. To add to the dilemma, the clock keeper let the time run down to three seconds and the referees refused to have the clock reset, shrugging off the error to "home court advantage." The loud, derisive (vulgar) and immature Conn. College crowd had apparently exerted their influence upon the 'impartial judges.' Tom Fleming then sank the two foul shots to give the host team a 56-54 edge, where the score remained when a last ditch shot by Randy Byrne bounced off the rim at the buzzer, putting Connecticut College in the consolation game and sending WPI to the consolation game with Concordia College. Based on their play for the first 32 minutes of the game, the Engineers may not have deserved to win the game, but they surely didn't deserve to lose it in the manner that they did. In the words of Jim Petropoulos, "The officiating was terrible." Others were not so kind.

WPI wanted to leave no room for the referees to make a difference in the Concordia game and, believe me, they didn't leave a centimeter. Anybody who

arrived after the opening tap missed seeing the game when the outcome was still in doubt. Russ Philpot scored 10 of his game high 20 points and Randy Byrne added six as the Engineers moved out to a 26-9 lead less than 12 minutes into the game. Concordia kept the deficit to 16 at the half, (41-25), but it was all downhill from there. Tech broke loose, playing good defense while Philpot continued to score and Rich Wurm went absolutely beserk, scoring 16 points and grabbing 11 rebounds in just under 17 minutes of playing time. Every player on the squad scored at least 2 points, with Chip Anderson breaking into the scoring column with only 10 seconds left to complete the 95-52 rout.

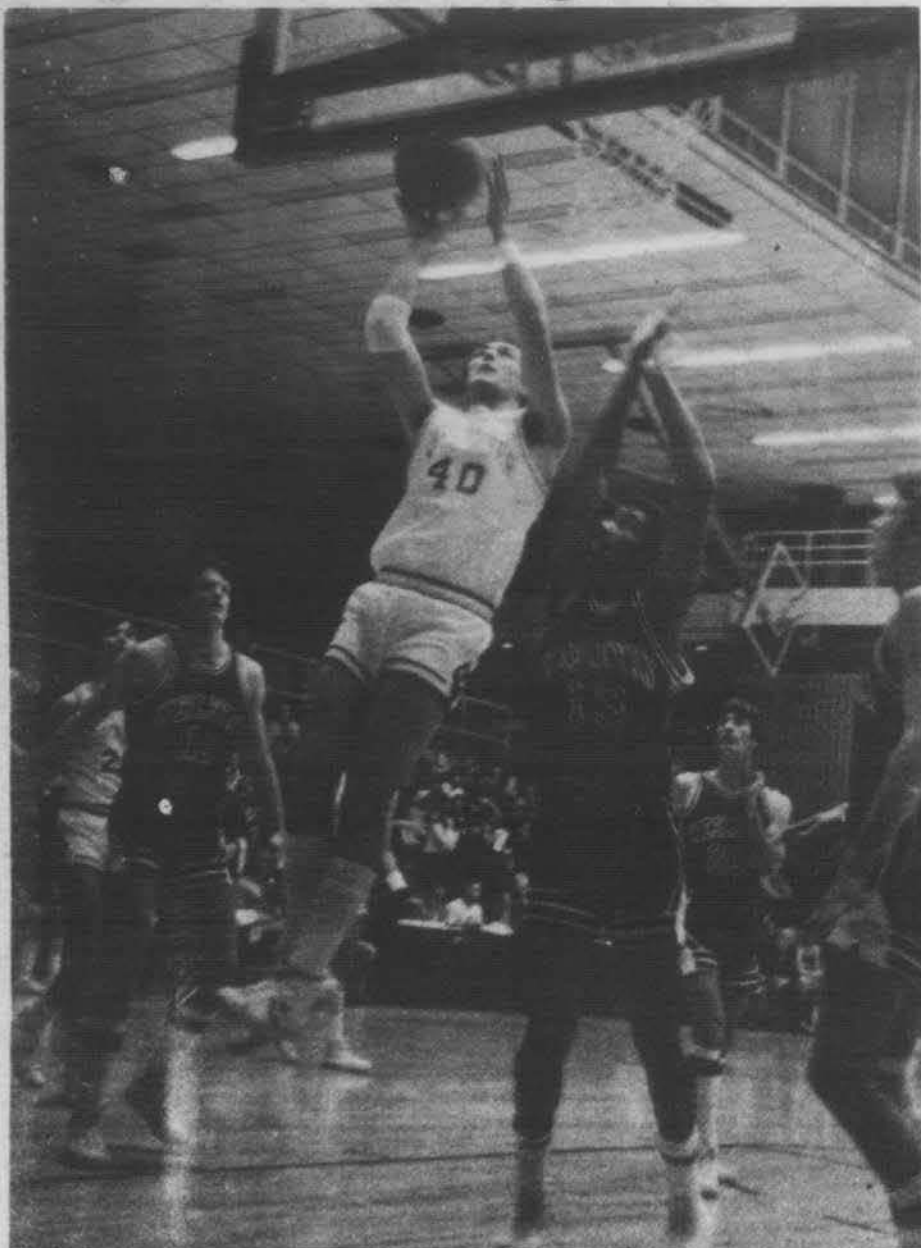
The players were not greatly consoled in the victory. The desire to have participated in the championship game seemed to linger on everyone's minds. As captain Byrne said, "We were the best team of the tournament. It's only a shame we didn't get a chance to prove it. It would be interesting to play Connecticut College on our home court with our fans in the stands and see what the result is then."

Overall, the team had a good showing. However, a few points for ironing out did show up. First of all, the WPI team has to stop missing their layups. In the first few games, they have blown easy shots at an alarming rate. They also need to find a way to get themselves moving against the very deliberate type of game which Connecticut College played. Possibly, employing the press earlier in the game would get them going.

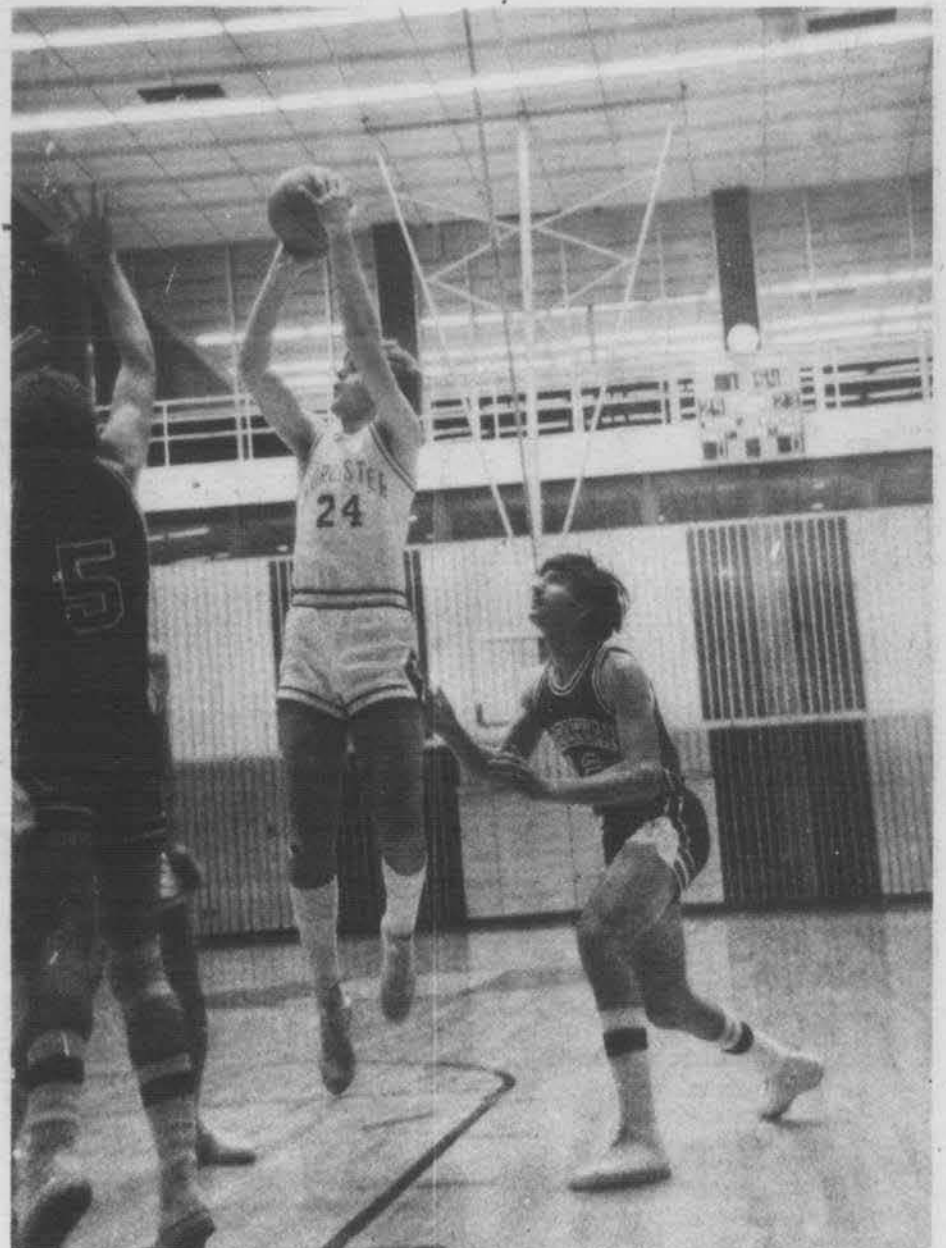
On the positive side, the Engineers have exhibited the ability to play with the good teams, to play good defense, and to break a game open. They have also shown good balance in scoring and the capability to rebound against taller opponents. Petropoulos has played very well all around. Shaun Moore has rebounded well. Philpot has started pouring in the points. Ed Walls and Randy Byrne are handing out assists like no pair of WPI back courtmen in recent memory, and Wurm looks very good coming off the bench.

(Continued on page 13)

## The run and gun offense at work



Jim Petropoulos on the drive.



Chris Roche pops for two.

# Freshman leads swimmers to first victory

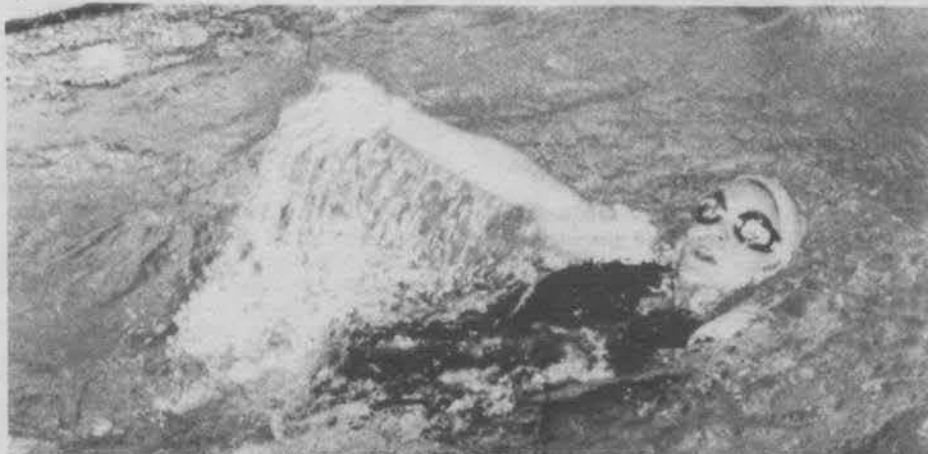
by Paul Cottle

Freshman Steve Punt won two events to lead WPI to a narrow win over rival Babson last Tuesday. After WPI's opening loss in the 400 yard medley relay and Suzanne Call's surprising defeat in the 1000 yard freestyle, Steve's 200 yard freestyle win in his first swim as an Engineer turned the momentum around. John Lee took second in the 200 free to complete a WPI sweep.

After Todd Dean and Rick Frost took second and third in the 60 yard freestyle, Mike Healey blasted to a swift victory in the 160 yard individual medley, with Claude Valle bringing in third place. With WPI ahead by only one point, Steve Punt again

led an Engineer sweep, this time leading Paul Cottle to the first two places in the 200 yard butterfly.

The second place and third place showings of Mike Healey and Todd Dean (respectively) in the 100 yard freestyle, and the WPI sweep (by default — Babson had no entries) in the 200 yard backstroke by Suzanne Call and Rick Frost all but wrapped up the meet. Suzanne and John Lee then took second and third in the 500 yard freestyle. Another second and third place in the 200 yard breaststroke by Claude Valle and Tom Barron scored WPI's final four points, enough to secure the 50-44 final score.



Suzanne Call.

— John Mar

## ...Basketball

(Continued from page 12)

First year assistant coach Peter Murray, who played on some good teams at Middlebury the last four years, likes the team's chances this year. He observes, "The team has been playing well despite the fact that Randy hasn't even started to score yet (as he will). I think that as the

season goes on, we're going to be a good team."

The team travels to Bowdoin tonight for a 7:30 game and will be back in Harrington on Saturday night to take on a tough Union College team at 7:30 p.m. Arrive early while there is still a place to sit. It only takes a WPI I.D. to get in.

### Box Score

#### WPI vs. Wesleyan

WPI - 72 Wesleyan - 63

**Leading Rebounders:** Moore 12, Petropoulos 9, Philpot 8

**Assist Leaders:** Byrne 9, Walls 8

**Scorer:** Walls, 6, Byrne 17, Moore 14, Philpot 10, Roche 4, Anderson 2, Petropoulos 14, Wurm 5

#### WPI vs. Connecticut College

WPI - 54 Connecticut College - 56

**Leading Rebounders:** Byrne 6, Philpot 6

**Assist Leaders:** Moore 6, Walls 5, Byrne 5

**Scorers:** Walls 12, Byrne 12, Philpot 12, Anderson 2, Petropoulos 4, Wurm 2, Moore 10

#### WPI vs. Concordia College

WPI - 95 Concordia 52

**Leading Rebounders:** Moore 14, Wurm 22, Philpot 8

**Assist Leaders:** Byrne 8, Walls 6

**Scorers:** Walls 6, Byrne 12, Moore 7, Philpot 20, Roche 3, Melfi 5, Anderson 2, Pecevich 8, Petropoulos 10, Wurm 16, Trainer 4, Coyne 2

Basketball photos by Steve Knopping.

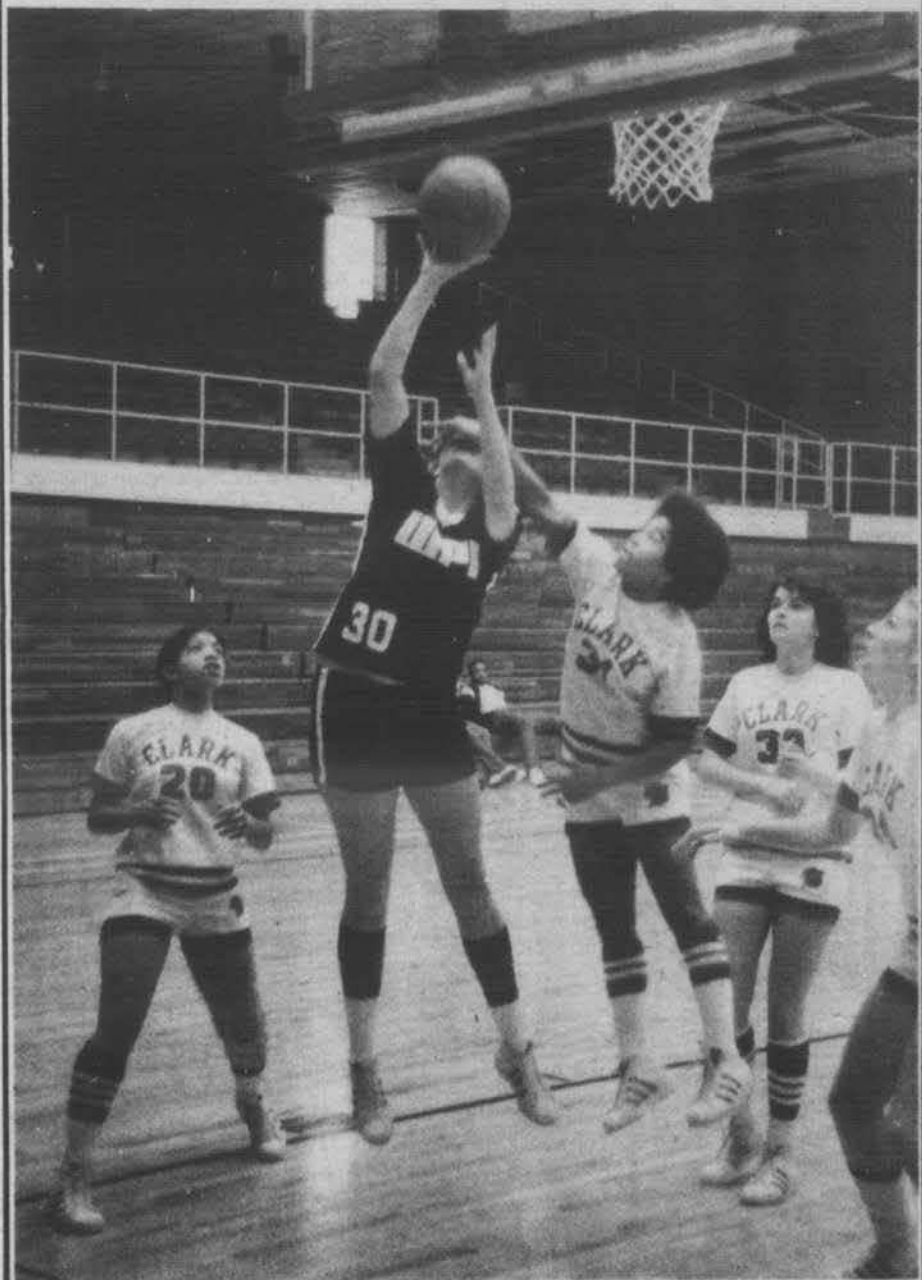


Philpot powers one in.



Moore scores first points of the season.

## Women's basketball winless after two in tournament



— Steve Knopping

This past weekend WPI hosted the Women's Basketball City Tournament in Harrington Auditorium. Challenging two tough division two teams — first Assumption on Friday and Clark, in a close match on Saturday, WPI ended the tournament winless. Saturday Tech was handicapped with the loss of the talents of

Michelle Girard by an injury Friday. High scorers of the Tech squad were Terese Kwiatkowski with 17 points and Chiara Whalen with 16.

A very strong Holy Cross team won the tournament with a 49-43 score over Assumption in a match against the two winning teams from the first two matches.

# CAMPUS CAPSULES

### SAB meeting

There will be a Student Activities Board meeting on Tuesday, December 9, 1980 at 7:00 p.m. in Higgins Lab 109. A representative from your club should be present to discuss the following agenda. Please be prompt.  
AGENDA: Forms.

### IEEE notices

Dave Cyganski will talk about the EE Comp Wed, Dec. 10, 4 p.m., SL 105. Keith Gutfreund of Dec. will talk on software development for microcomputers, Tues., Dec. 9, 12 noon, SL 121, a buck gets you pizza!

# Present Newspeak Constitution

## ARTICLE 1: NAME AND PURPOSE

Section 1. This organization shall be known as the WPI Newspeak Association of Worcester Polytechnic Institute.

Section 2. It shall be the duty of the WPI Newspeak Association to publish the college weekly known as WPI Newspeak.

## ARTICLE 2: MEMBERSHIP

The WPI Newspeak Association shall consist of any number of men or women as provided below:

Section 1. There shall be at least one Editor-in-chief; however, there may be no more than two Editors-in-chief. There shall be at least one News Editor and one Feature Editor, or at least one News-features editor; there shall be at least one Photography editor; there shall be at least one Sports Editor; and there shall be at least one Business Manager. All of the above may have more than one person in each position if so desired. The above members, called Senior Members, comprise the Editorial Board of the WPI Newspeak Association.

Section 2. There shall be at least one Advertising Manager; there shall be at least one Graphics Editor; there shall be at least one Circulation Manager. There may be up to as many as six assistants known as Associate Editors. All of the above shall be known as Associate Members.

Section 3. There may be any number of reporters and other staff who have fulfilled the requirements for membership as defined in Article 4. All of the above shall be called Writers and Staff.

## ARTICLE 3: VOTING

### Section 1.

#### A. Annual Elections.

1. The Editor-in-chief(s) shall have five (5) votes each.

2. The remaining members of the Editorial Board as defined in ARTICLE 2 shall have three (3) votes each. However, in positions where there is more than one person, their votes shall be divided among those members in that position.

3. Associate Members as defined in ARTICLE 2 shall have two (2) votes each.

However, in positions where there is more than one person, the two votes shall be divided among those members in that position.

4. The Writers and Staff as defined in ARTICLE 2 shall have one (1) vote each.

#### B. Editorials.

An Editorial shall be signed, "The Editors" if two-thirds (2/3) of the Editorial Board present at makeup time sign the editorial. Otherwise, the names of those signing the editorial shall appear.

## ARTICLE 4: ELECTION AND APPOINTMENT TO MEMBERSHIP

Section 1. A student is eligible to be considered a member as part of the Writers and Staff if, in the opinion of the Editorial Board, he or she has performed satisfactorily in service to the WPI Newspeak Association.

Section 2. Associate Editors will be appointed by the Editor(s)-in-chief subject to a majority approval of the Editorial Board.

Section 3. The Advertising Manager, Graphics Editor, Circulation Manager, and those members defined in ARTICLE 2, Section 1, shall be elected annually by a majority vote (see ARTICLE 3, Section 1 for Voting) of all members of the WPI Newspeak Association. Candidates for these positions must have completed at least one year of service to the WPI Newspeak Association. The Editor(s)-in-chief may make exceptions to the rule if, in his/her (their) opinion(s), a candidate is qualified to assume a membership position described above in this Section. Where there is more than one person running together for the same position, they shall run as one candidate.

#### Section 4. Nominations

A. Nominations for elected positions stated in ARTICLE 4, Section 3 shall be opened at least one (1) week prior to the deadline for nominations.

B. Nominations for the elected positions stated in ARTICLE 4, Section 3, shall close at least two (2) days prior to the date for the elections.

C. Elections shall be held at least one (1)

week prior to the end of Term B.

D. New members elected in the annual elections shall take office at the end of Intercession.

## ARTICLE 5: VACANCIES

Section 1. In the event of a vacancy (due to resignation, etc.), with the exception of Editor(s)-in-chief, the Editor(s)-in-chief shall appoint a member who meets the qualifications stated elsewhere in this Constitution to the vacant position(s).

Section 2. In the event of a vacancy in the position of Editor-in-chief where there is originally one Editor-in-chief, an election of all members of the WPI Newspeak Association shall be held to fill the vacancy. Nominations and elections may be carried out in as quick a manner as is deemed necessary by the Editorial Board. In the event that there are two Editor-in-chief, and a vacancy occurs in one position as Editor-in-chief, the remaining Editor-in-chief shall carry on alone.

## ARTICLE 6: DUTIES OF MEMBERS

Section 1. All members shall perform duties as outlined by the Editor(s)-in-chief, with the following additions: The Business Manager, Advertising Manager, and Circulation Manager shall present to the Editor(s)-in-chief, at the end of Terms A, B, C, and D, an up-to-date statement of the Financial, Advertising, and Circulation status, respectively, of the WPI Newspeak Association and WPI Newspeak.

## ARTICLE 7: DISMISSAL

The Editor(s)-in-chief shall have the power to dismiss any member of the WPI Newspeak Association if, in his/her (their) opinion, that member is not performing his/her duties adequately.

## ARTICLE 8: AMENDMENTS TO THE CONSTITUTION

Section 1. An amendment to this Constitution may be made by a three-quarters (3/4) vote of all members of the WPI Newspeak Association.

Section 2. An amendment must be submitted in writing one week in advance of the date on which it is to be voted on, and must be published once in WPI Newspeak

prior to the vote.

ARTICLE 9: This Constitution shall go into effect November 12, 1974, and shall be published in WPI Newspeak Prior to Dec. 20, 1974.

## ...Committees

(Continued from page 1)

academic, admissions, and financial aid policies." In other words, the Committee has two major functions. The first is making recommendations about curriculum, such as changes in courses, introduction of new courses, and changes in credit. A number of changes in courses were made last spring and early this fall and will appear in the new Operational Catalog. An example is the formation of CS 1001 and 1002. The second function of the committee is taking actions on petitions, such as for early competency exams, to defer suspension, and to be readmitted after suspension. This committee also has two student members, Scott Sargis and Mark Scott.

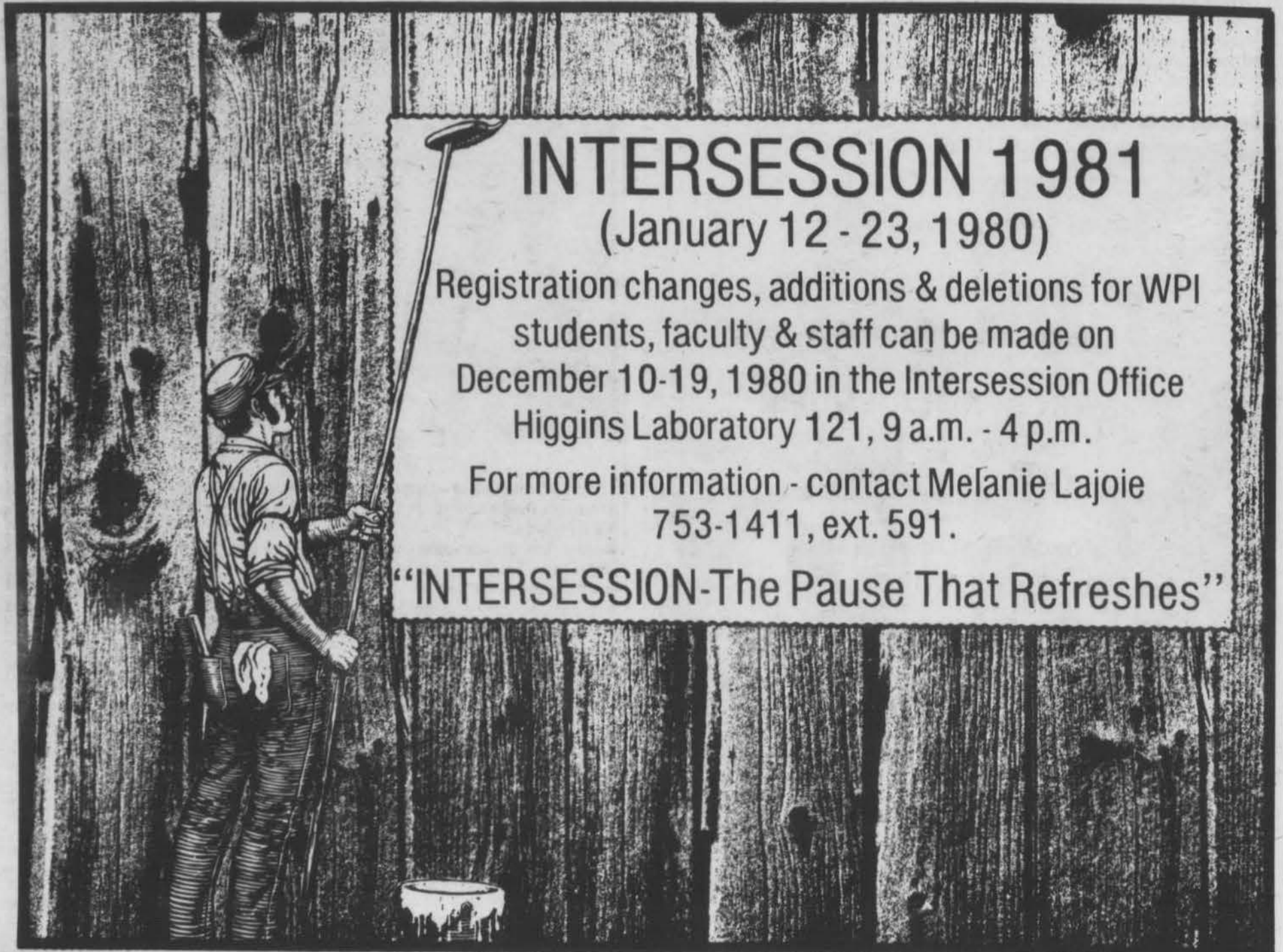
The duties of the Committee on Student Advising are stated in the Constitution as "responsible for the continuing development of the student advisory and counseling program." The committee provides information for advisors, such as the recent publishing of a new advisors handbook. At this time, the committee is discussing the role of the advisor with regard to advising students about the competency exam. The committee also wants to emphasize the importance of advising and not letting advising be taken for granted. As on the two previously mentioned committees, there are two students on this one, Peter Hamel and Brian Klaubert. Students are encouraged to contact the student members if they have concerns they want made known to the committee.

## INTERSESSION 1981 (January 12 - 23, 1980)

Registration changes, additions & deletions for WPI students, faculty & staff can be made on December 10-19, 1980 in the Intercession Office Higgins Laboratory 121, 9 a.m. - 4 p.m.

For more information - contact Melanie Lajoie  
753-1411, ext. 591.

"INTERSESSION-The Pause That Refreshes"



# Proposed Newspeak Constitution

## ARTICLE 1: NAME AND PURPOSE

Section 1. This organization shall be known as the WPI Newspeak Association of Worcester Polytechnic Institute.

Section 2. It shall be the duty of the WPI Newspeak Association to publish the college weekly known as WPI Newspeak.

## ARTICLE 2: MEMBERSHIP

The WPI Newspeak Association shall consist of any number of men or women as provided below:

Section 1. There shall be at least one Editor-in-chief; however, there may be no more than two Editors-in-chief. There shall be at least one News Editor and one Feature Editor, or at least one News-Features Editor; there shall be one Photography Editor; there shall be at least one but not more than two Sports Editors; there shall be one Graphics Editor; there shall be one Business Manager. The above members, called Senior Members, comprise the Editorial Board of the WPI Newspeak Association.

Section 2. There shall be one Advertising Manager; there shall be one Circulation Manager. There may be up to as many as six assistants known as Associate Editors. All of the above shall be known as Associate Members.

Section 3. There may be any number of reporters and other staff who have fulfilled the requirements for membership as defined in Article 4. All of the above shall be called Writers and Staff.

## ARTICLE 3: VOTING

Section 1. Annual Elections.

1. The Editor-in-chief(s) shall have five (5) votes each.

2. The remaining members of the Editorial Board as defined in Article 2 section 1 shall have three (3) votes each. However in positions where there is more than one person, their votes shall be divided among those members in that position.

3. Associate Members as defined in

Article 2 section 2 shall have one (1) vote each.

## ARTICLE 4: ELECTION AND APPOINTMENT TO MEMBERSHIP

Section 1. A student is eligible to be considered a member as part of the Writers and Staff if, in the opinion of the Editorial Board, he or she has performed satisfactorily in service to the WPI Newspeak Association.

Section 2. Associate Editors will be appointed by the Editor(s)-in-chief subject to a majority approval of the Editorial Board.

Section 3. The Advertising Manager, and Circulation Manager, and those members defined in Article 2 section 1 shall be elected annually by a majority vote (see Article 3, section 1) of all members of the WPI Newspeak Association. Candidates for these positions must have completed at least one year of service to the WPI Newspeak Association. The Editor(s)-in-chief may make exceptions to the rule if, in his/her (their) opinion(s) a candidate is qualified to assume a membership position described above in this section. Where there is more than one person running together for the same position, they shall run as one candidate.

## Section 4. Nominations

1. Nominations for elected positions stated in Article 4, section 3, shall be open at least one (1) week prior to the deadline for nominations.

2. Nominations for the elected positions stated in Article 4, section 3, shall close at least two (2) days prior to the date for the elections.

3. Elections shall be held at least one (1) week prior to the end of Term B.

4. New Members elected in the annual elections shall take office at the end of intersession.

## ARTICLE 5: VACANCIES

Section 1. In the event of a vacancy (due to resignation, etc.), with the exception of Editor(s)-in-chief, the

Editor(s)-in-chief shall appoint a member who meets the qualifications stated elsewhere in this Constitution to the vacant position(s).

Section 2. In the event of a vacancy in the position of Editor-in-chief where there is originally one Editor-in-chief, an election of all members of the WPI Newspeak Association shall be held to fill the vacancy. Nominations and elections may be carried out in as quick a manner as is deemed necessary by the Editorial Board. In the event that there are two Editors-in-chief, and a vacancy occurs in one position as Editor-in-chief the remaining Editor-in-chief shall carry on alone.

## ARTICLE 6: DUTIES OF MEMBERS

Section 1. All members shall perform duties as outlined by the Editor(s)-in-chief, with the following additions: The Business Manager, Advertising Manager, and Circulation Manager shall present to the Editor(s)-in-chief, at the end of Terms A, B, C, and D, an up to date statement of the Financial, Advertising, and Circulation status, respectively, of the WPI Newspeak Association and WPI Newspeak.

## ARTICLE 7: DISMISSAL

Section 1. The Editor(s)-in-chief shall have the power to dismiss any member of the WPI Newspeak Association if, in his/her (their) opinion, that member is not performing his/her duties adequately.

## ARTICLE 8: AMENDMENTS TO THE CONSTITUTION

Section 1. An amendment to this Constitution may be made by a three quarters (¾) vote of all members of the WPI Newspeak Association.

Section 2. An amendment must be submitted in writing one week in advance of the date on which it is to be voted on, and must publish once in WPI Newspeak prior to the vote.

## ARTICLE 9: POLICIES

Section 1. Editorials shall be labeled with the "Editorial" logo. An editorial

may be submitted by a Senior Member of the WPI Newspeak Association. All editorials are subject to the approval of the Editor(s)-in-chief. All editorials printed will be unsigned, however the original copy must be signed by the author(s) and remain on file in the Newspeak office till the end of B term of that year.

Section 2. Letters to the editor must be signed and contain a telephone number for verification. Under no circumstances will the authors name be withheld from print. All letters are subject to the discretion of the Editor(s)-in-chief.

## ARTICLE 10:

This Constitution shall go into effect January 1, 1981, and shall be published in the December 16, 1980 issue of WPI Newspeak.

## ...Studio

(Continued from page 2)

set up such a studio, but space is still space. If there was no room for us, where could a suitable place be found now, with space tighter than ever?

Our suggestion to Mr. Starr and his friends interested in "Musical Engineering" is to join Lens and Lights. Although it's true nearly all of our endeavors in music are related to reinforcement, we are occasionally asked to record a local or on-campus group. Reinforcement itself offers its own set of challenges equal to or greater than recording. With the equipment available to club members through participation in Lens and Lights and its activities, there is a lot that can be learned about the current state-of-the-art in both equipment and technique. For anyone interested in joining, we meet every other Wednesday, with the next meeting scheduled for December 4.

For Lens and Lights:  
Gary Brown

## SCHOLARSHIPS!

now accepting applications  
for Army ROTC  
3 & 2 year scholarships

FACT: last year 8 students  
were recommended

5 WON SCHOLARSHIPS!

60% success rate!


For WPI students this  
scholarship COULD be worth

**\$6,500** a year

For more information contact  
Captain Ed Buccellato

752-7209

Deadline 19 Dec

 Army ROTC.  
Learn what it takes to lead.

## ATTENTION JUNIORS:

THERE WILL BE AN OPEN  
MEETING CONCERNING  
SUMMER JOBS  
AT 5:00 P.M.  
ON  
MONDAY, DECEMBER 15  
IN KINNICUTT HALL.

# WHAT'S HAPPENING

## Wednesday, December 10

Women's Basketball vs. Bryant College, away 6 p.m.  
Swimming vs. Boston College, away 7 p.m.  
Hockey vs. Conn. College, away 7:30 p.m.

## Thursday, December 11

Color Photo Sale, Wedge, 9 a.m.-5 p.m.  
Tech Old-Timers, Gordon Library Seminar Room, 10 a.m.  
Faculty Meeting, Kinnicutt Hall, 4:05 p.m.  
JV Basketball vs. Assumption, away 7:30 p.m.  
Coffeehouse Entertainment featuring Roger Salloom, Wedge 9 p.m.

## Friday, December 12

\*Women's Basketball vs. Merrimack College, home 7 p.m.  
Swimming vs. Clark University, away 7 p.m.

## Saturday, December 13

Indoor Track vs. Bentley, away, noon.  
Women's Basketball vs. Emmanuel, away 2 p.m.

\*Hockey vs. Tufts, Worcester Arena, 4 p.m.  
Wrestling vs. Harvard/UNH/Mass. Maritime, away, 4:30 p.m.  
\*JV Basketball vs. Worcester Academy, home 5:30 p.m.  
Varsity Basketball vs. Union College, home 7:30 p.m.  
Pub Entertainment featuring "Misleading" 8:30 p.m.

## Sunday, December 14

Sunday Mass, Wedge, 11 a.m.  
Lens and Lights, "Animal House," Harrington Auditorium, 6:30 and 9:30 p.m.  
(WPI \$1/others \$1.50)

## Monday, December 15

HU, "Jane Eyre," Kinnicutt Hall, 7:30 p.m. Free.  
\*Hockey vs. Clark, Worcester Arena, 7:30 p.m.

## Tuesday, December 16

Business Women's Club, Christmas Party, Higgins House, 5 p.m.  
\*Women's Basketball vs. Western New England College, home, 7 p.m.

## Executive Council minutes

The meeting was called to order by president Hal Ekberg at 7:00 p.m. Those in attendance were: Dean Brown, Sue Hoffma, Heather MacDonald, Glenn Zinkus, Mati Weiderpass, Phil Gallagher, Doug McNary, and Dennis Wysocki.

IFC President Phil Gallagher reported on the results of the United Way Marathon Weekend; approximately \$2750.00 was turned over to this worthwhile organization. The weekend went over fairly smoothly, with the only incident being a New England Patriots Cheerleader (Sydney) getting a pie in the face.

Sue Hoffma (Class 81 Rep) told of an upcoming meeting concerning the senior banquet (March 15). Senior week is being planned and lots of activities are being considered. As an alternative to 'rejection letter night in the pub' an 81 days to graduation night is being considered (Get it — 81 as in Class of ...). Other considerations are a booze cruise and a parents wine and cheese night.

Heather MacDonald (Class 83 Rep) told of a Class party on Friday night, December 5, at SigPi.

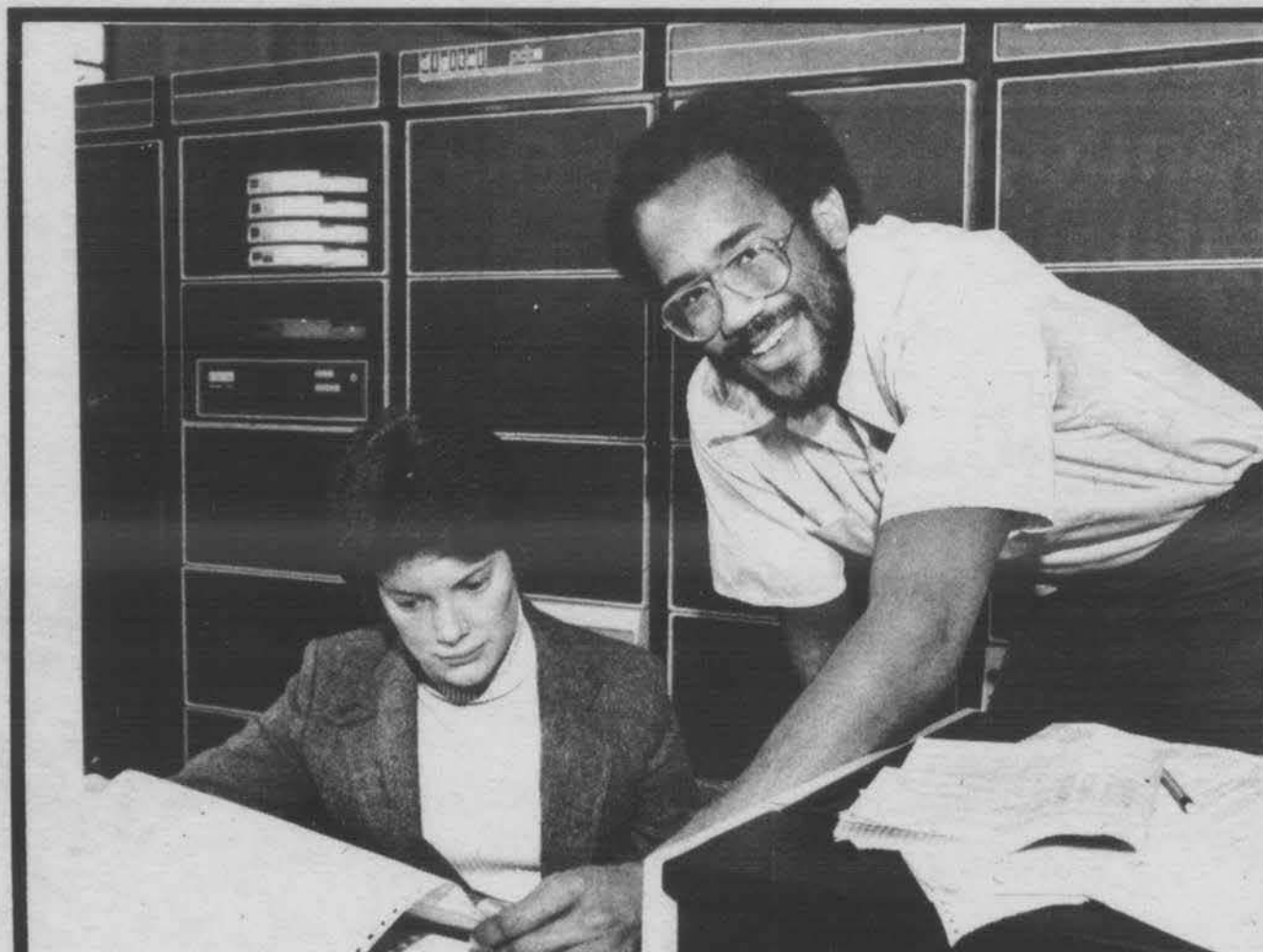
Glenn Zinkus (Class 84 Rep) reported on a freshman class party on Sunday, December 7, at Higgins House.

Mati Weiderpass (Stud. Academic Comm) reported that although a previous attempt at a peer counseling session on financial aid had been abandoned due to lack of interest, another meeting will be held to try something similar.

Doug McNary (CCS) had scheduled a speaker from MISC to talk but she postponed the engagement until after Christmas.

Hal reported on the upcoming Social Committee Chairman elections to be held on December 11. *Newspeak* is planning on carrying interviews and pictures, etc... on each of the three candidates. A discussion followed which concerned the contents of the freshman directory in subsequent years. Also, executive council members were assigned time slots to work at the elections.

Dennis Wysocki  
Executive Council Secretary



## "Computer Simulation? It was my take off to a great future."

Becoming a Link Engineer has made a big difference in my career. I wanted a challenge. And the chance to design something exciting. Link gives me that chance and more.

Modern simulation technology was born at our company more than fifty years ago and ever since then, we've been the industry's leader in the design and manufacturing of aviation and aerospace training devices. Our trainers can realistically fly you from New York to L.A. and Houston to the moon without ever leaving their hangar.



A DIVISION OF THE SINGER COMPANY  
Binghamton, New York 13902

We're looking for graduates with degrees in Engineering (EE, ME, IE) Computer Science, Physics and Business. See us on campus or contact A.C. Esworthy — Link Division of Singer, Binghamton, New York (607) 772-3561.

Link Simulation is Future Engineering

ON-CAMPUS INTERVIEWS  
WORCESTER POLYTECHNIC  
INSTITUTE  
WEDNESDAY DECEMBER 10, 1980

Equal Opportunity Employer M/F