



Problem



FOOD INSECURITY

1 in 6 people are food insecure in the United States



CAUSES

↑ Rising cost of living =/↓ Stagnant or dropping wages

Stigmas associated with help from 

Food Banks



Low access to grocery stores



FOOD WASTE

40% of all food produced in the United States ends up in landfills

HARMFUL TO ENVIRONMENT

Food in landfills



Methane

Traps 100x more heat than CO2



Climate Change



Indirect waste of economic and environmental resources



Potential Solution

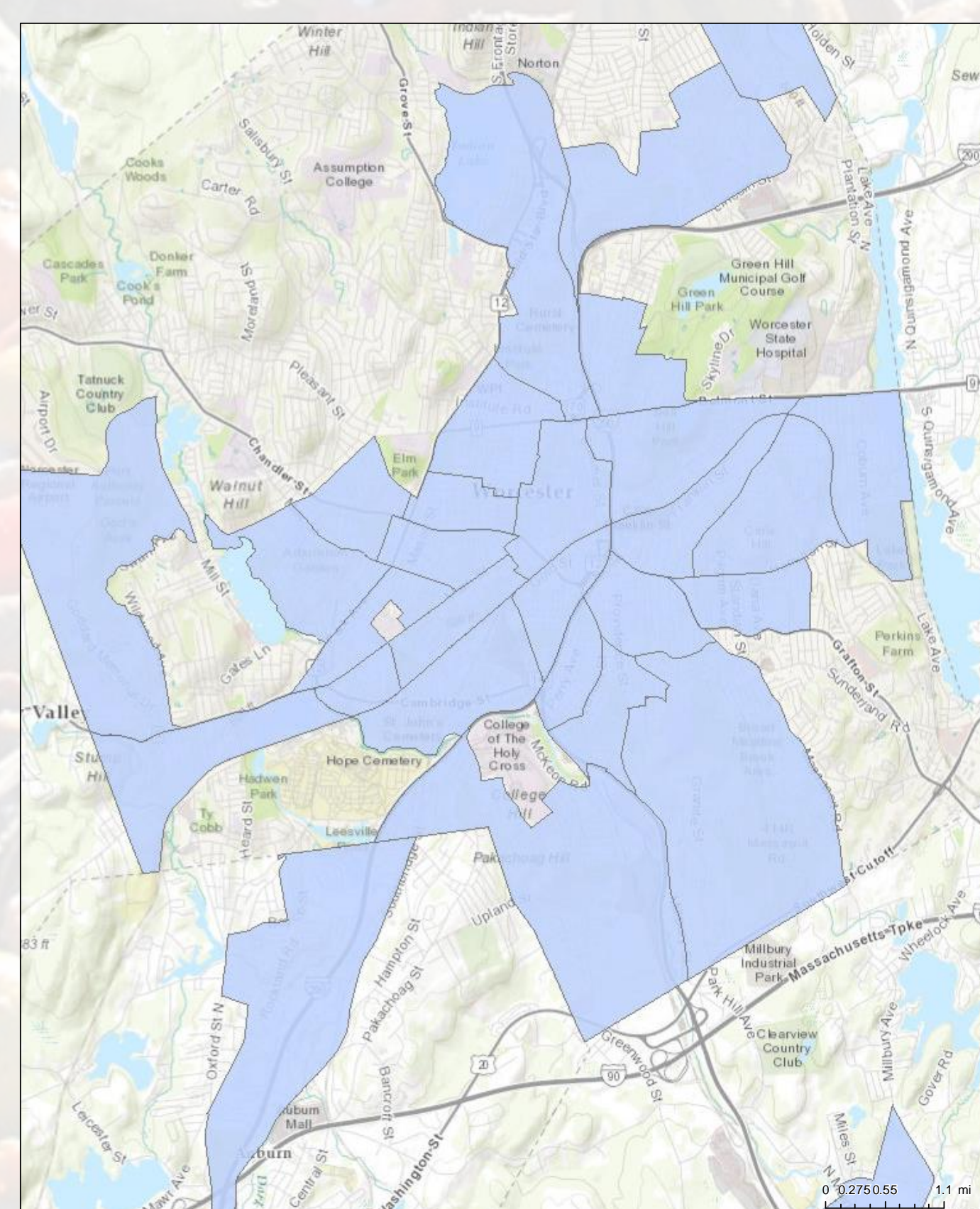
The Daily Table is a grocery store that sells repurposed food for a discounted price. It has reduced food waste and insecurity in Dorchester, MA.

Key Benefits:

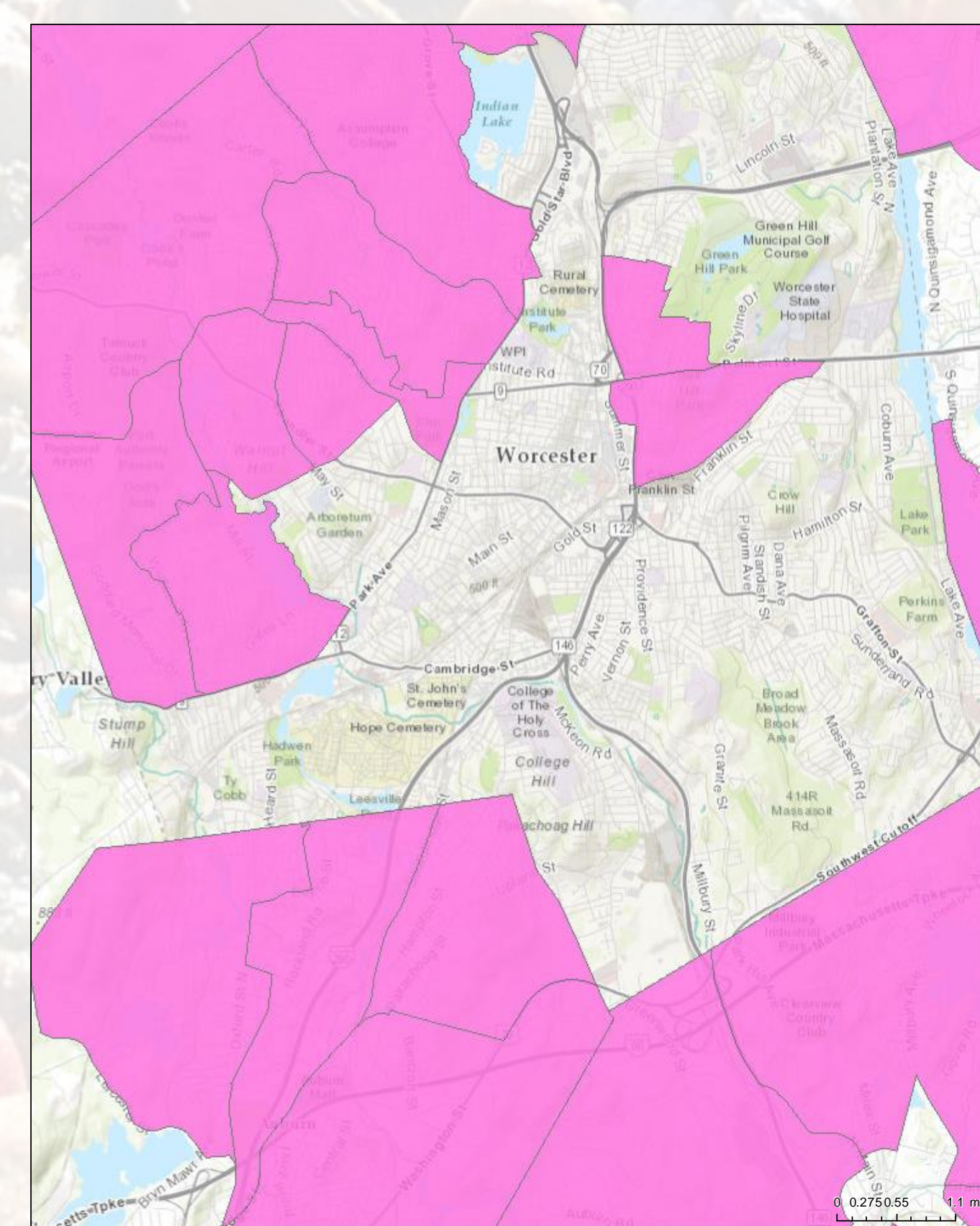
- Diverts food from landfills
- Provides affordable & nutritious food “with dignity”



Results



Food Deserts (USDA)

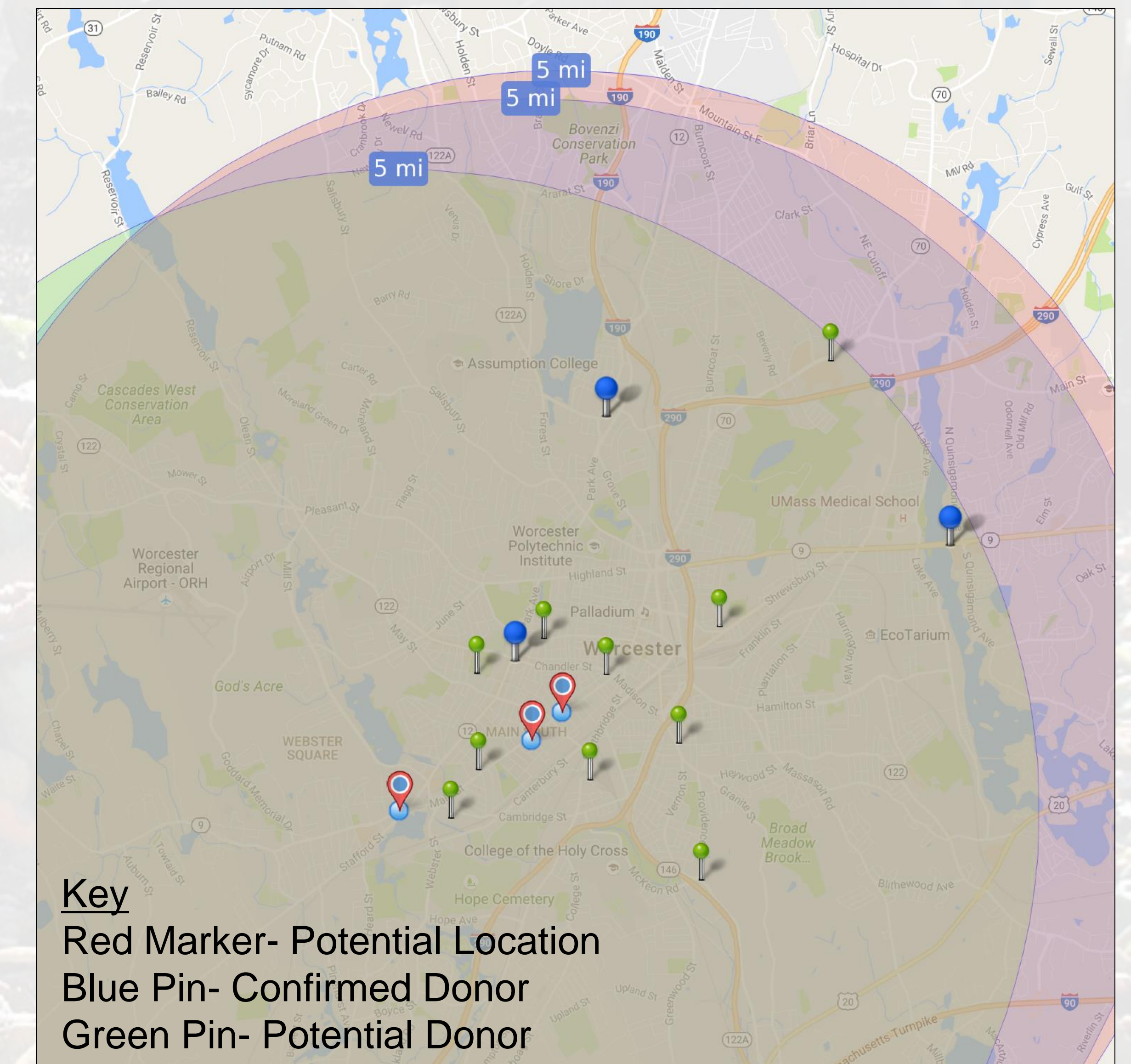


Low Income Areas (USDA)

In the overlap of these maps would be the ideal area to implement a store similar to the Daily Table. 120,000 people live in these overlapping areas.

Recommendation

We recommend the implementation of a store similar to the Daily Table at one of the specified locations.



Key
 Red Marker- Potential Location
 Blue Pin- Confirmed Donor
 Green Pin- Potential Donor

	Location 1	Location 2	Location 3
Industrial Kitchen	X	X	
Available Parking	X	X	
Closest to a Food Desert		X	
Cheapest	X		
Largest	X		
5 Stores Within 5 Mile Radius	X	X	X

Assessment

The map above shows three ideal locations for a store similar to the Daily Table. Potential donors within a 5 mile radius are marked by blue and green pins. Location 1 is the most optimal when evaluated by our decision matrix.

References & Acknowledgements

Allen, D., Filice, J., Patel, N., & Warner, B. (2012, May 15). Analyzing Food Security in Worcester. Retrieved October 4, 2016.

Feeding America. (2016). The Impact of Hunger & Food Insecurity. Retrieved October 04, 2016, from <http://www.feedingamerica.org/hunger-in-america/impact-of-hunger/>

Hall, K. D., Gan, J., Dore, M., & Chen, C. (2009, November 29). The Progressive Increase of Food Waste in America and Its Environmental Impact. Retrieved October 03, 2016, from <http://www.nytimes.com/2009/11/29/us/politics/29waste.html>

Irwin, M. (2016, August 06). We're in a Low-Growth World. How Did We Get Here? Retrieved October 03, 2016, from <http://www.nytimes.com/2016/08/06/us/politics/29waste.html>

Luna, T. (2015, May 22). Nonprofit Daily Table grocery store set to open in Dorchester. The Boston Globe. Retrieved October 03, 2016, from <https://www.bostonglobe.com/business/2015/05/22/daily-table/>

grocery-store-set-open-dorchester/C8uBHC1R8E0VCS90F0p90tary.html

Maxwell, D. G. (1996). Measuring food insecurity: the frequency and severity of "risky strategies". Food policy, 21(3), 291-303.

Nyman, P. (2014, September 30). Methane vs. Carbon Dioxide: A Greenhouse Gas Showdown.

Jean McMurray, Executive Director at Worcester County Food Bank; Fredi Shonkoff, Senior Vice President at the Daily Table; Rebecca Ziino, Research and Instruction Librarian at WPI