

The background of the slide is a photograph of a sunset over a mountain range. The sky is filled with orange and yellow clouds, and the sun is visible on the right side, low on the horizon. In the foreground, the silhouette of a pagoda is visible against the bright sky.

# Establishing an IQP center in Kyoto

Alexandra Barber, Daniel Chao, Albert Enyedy, Daniela Fraga Alvarez,  
Yosuke Nakamura, Felix Sanchez, Holly Shumway, Thomas Ward

# Evaluated Cities

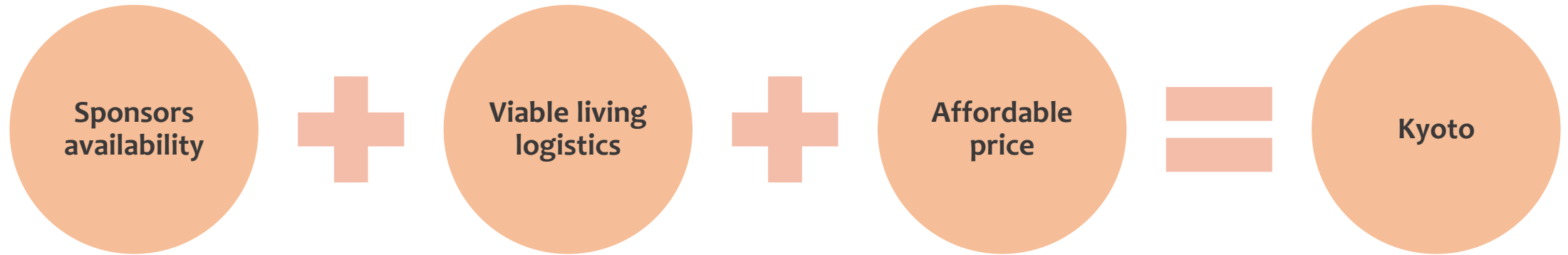
---



# City Recommendation

---

We selected **Kyoto** to be the city to establish a new IQP center



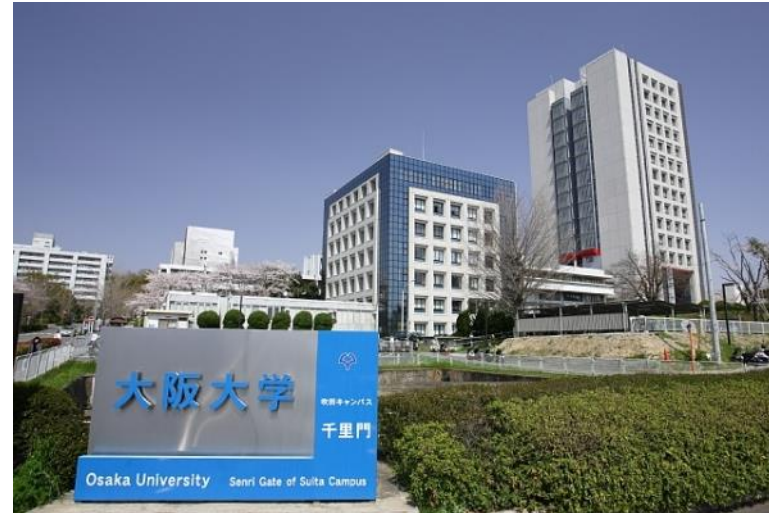
# Notable Connections

---

MQP partnerships with **Ritsumeikan University** and **Osaka University**.



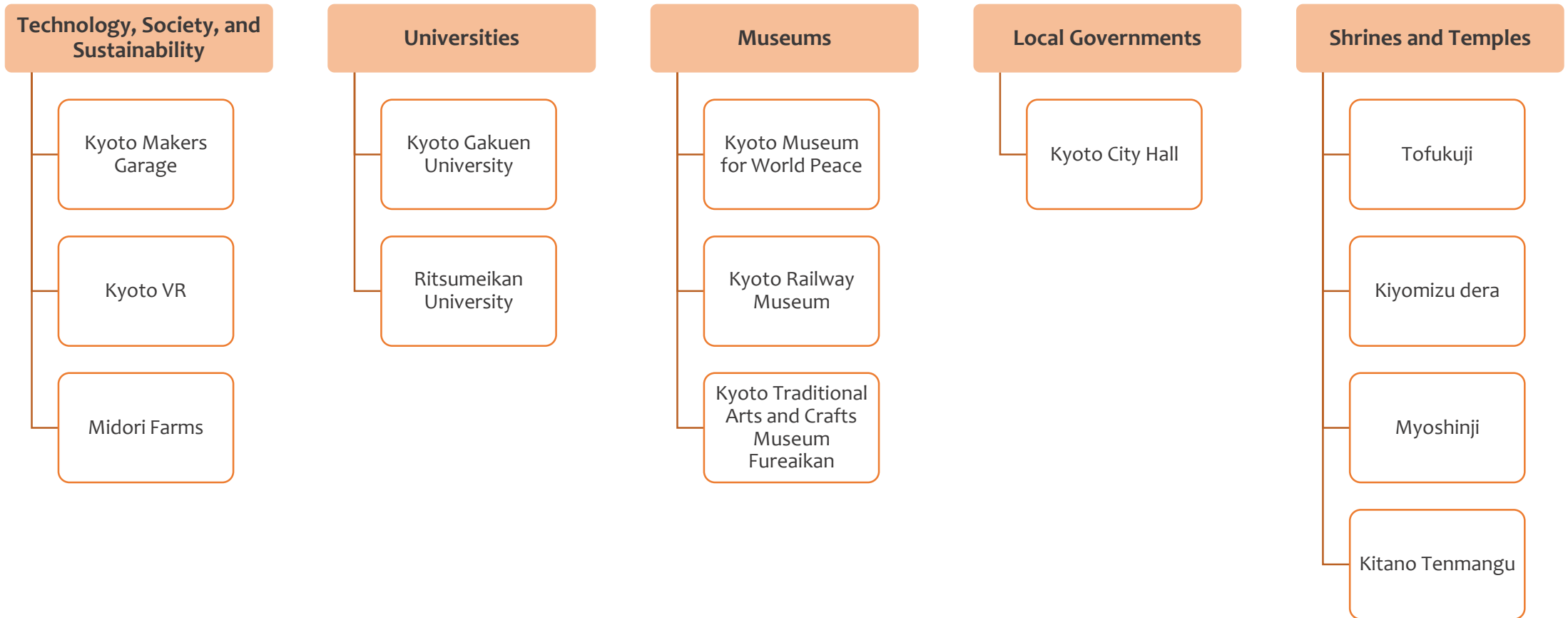
**Ritsumeikan  
University**



**Osaka  
University**

# Evaluated Sponsors in Kyoto

We evaluated 13 potential sponsors in Kyoto.

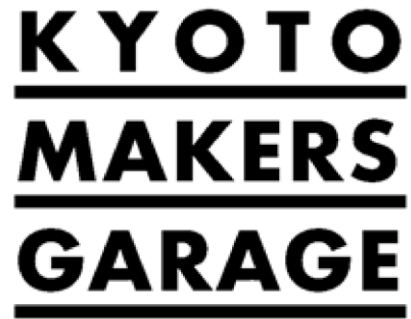


# Notable Evaluated Sponsors in Kyoto

---

We established potential partnerships with 4 organizations in Kyoto.

Kyoto Makers  
Garage



Kyoto VR



Midori Farms



Ritsumeikan  
University





# Kyoto Makers Garage

---

Kyoto Makers Garage seeks to promote an entrepreneurial mindset among the citizens of Kyoto by providing resources for startups and a makerspace for prototyping.

After meeting with Kyoto Makers Garage, they wanted to work with WPI students in order to inspire Japanese students to become entrepreneurs.

## Possible projects include:

- Development of strategies to attract students to the maker community
- Research youth perspective on entrepreneurship.
- Strategies to incorporate entrepreneurship mindset to housewives.
- Educational programs about how to become an entrepreneur



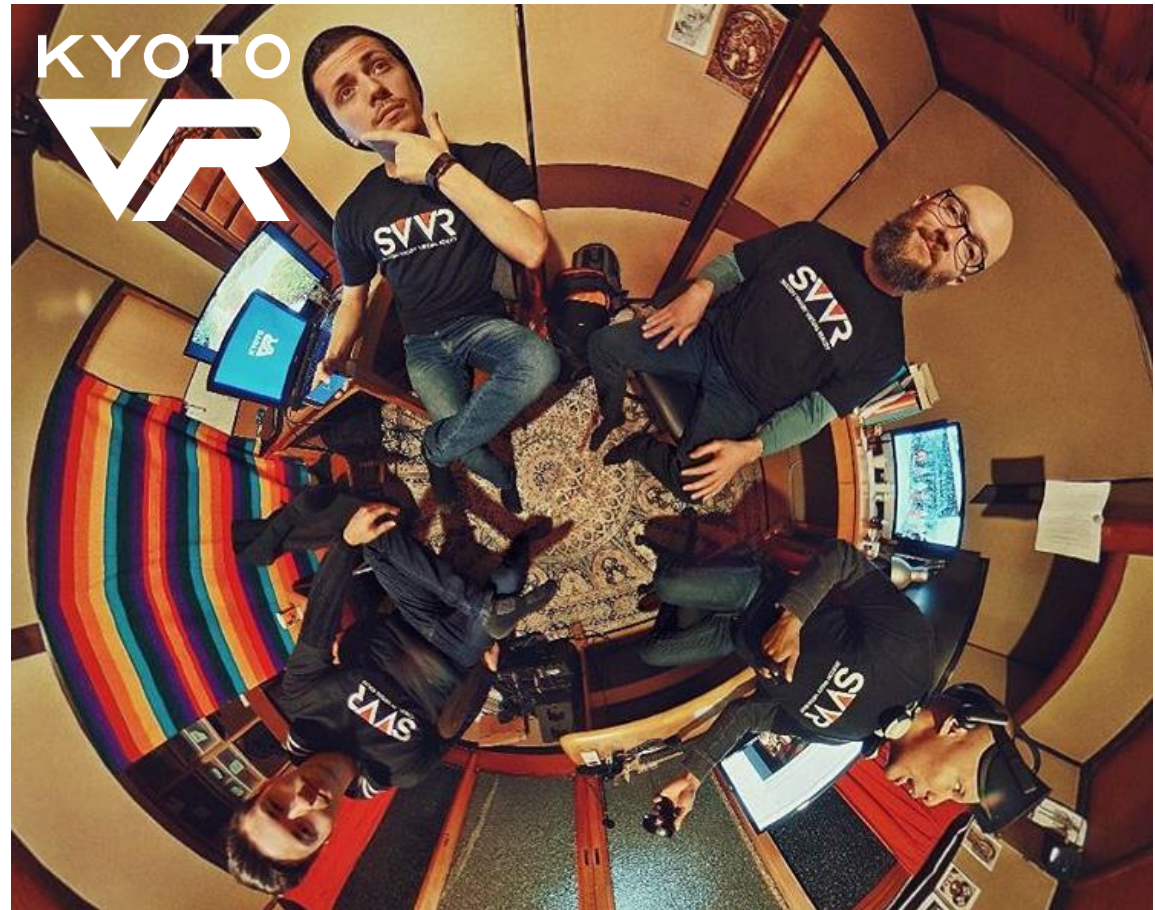
# Kyoto VR

Kyoto VR aims to provide people with the ability to enjoy Kyoto through the use of VR goggles.

After meeting with Kyoto VR, they showed a significant amount of interest for working with WPI.

## Possible projects include:

- Data collection of touristic places.
- Compilation of cultural information of the digitalized temples.
- Analysis of impact.





# Midori Farm

---

Midori Farm focuses on sustainable farming techniques and producing organic foods.

We met with Midori Farm and they are enthusiastic to work with us however A-term is favored by the farm.

## Possible projects include:

- Researching and developing farm solutions
- Strategies to attract young Japanese to participate in farming
- Educational materials and training programs for farmers



# Ritsumeikan University

---

Ritsumeikan University is one of the best universities in the Kansai region .

We meet with three faculty members in the Biwako-Kusatsu Campus and the Osaka-Ibaraki Campus.

## Possible projects include:

- Assessment of how to create an online teaching tool
- Structure or curriculum of short online courses
- Increasing the ability of public transportation to handle more foreign visitors
- Analyzing the effects of introducing Uber on the taxi industry
- Increase tourism in other parts of Japan besides Kyoto and Tokyo
- Increase tourism through health-based activities
- Develop methods to handle invasive species in a nearby lakes



# IGSD Estimates

## Student

- Estimated cost per term for one student

Housing	\$1,632.80
Food	\$1,198.37
Transportation	\$207.12
Total	\$3,038.29

\*JPY to US dollars as of 2/27/2018

## Faculty and Fees

- Estimates for 1 faculty for 50 days in Kyoto and onsite fees

Housing	\$2,101.50
On-site Coordinator	\$5,000
Workspace	\$2,500
Total	\$9,601.50

\*JPY to US dollars as of 2/27/2018

- Estimates for 1 faculty and their family, up to 4 guests

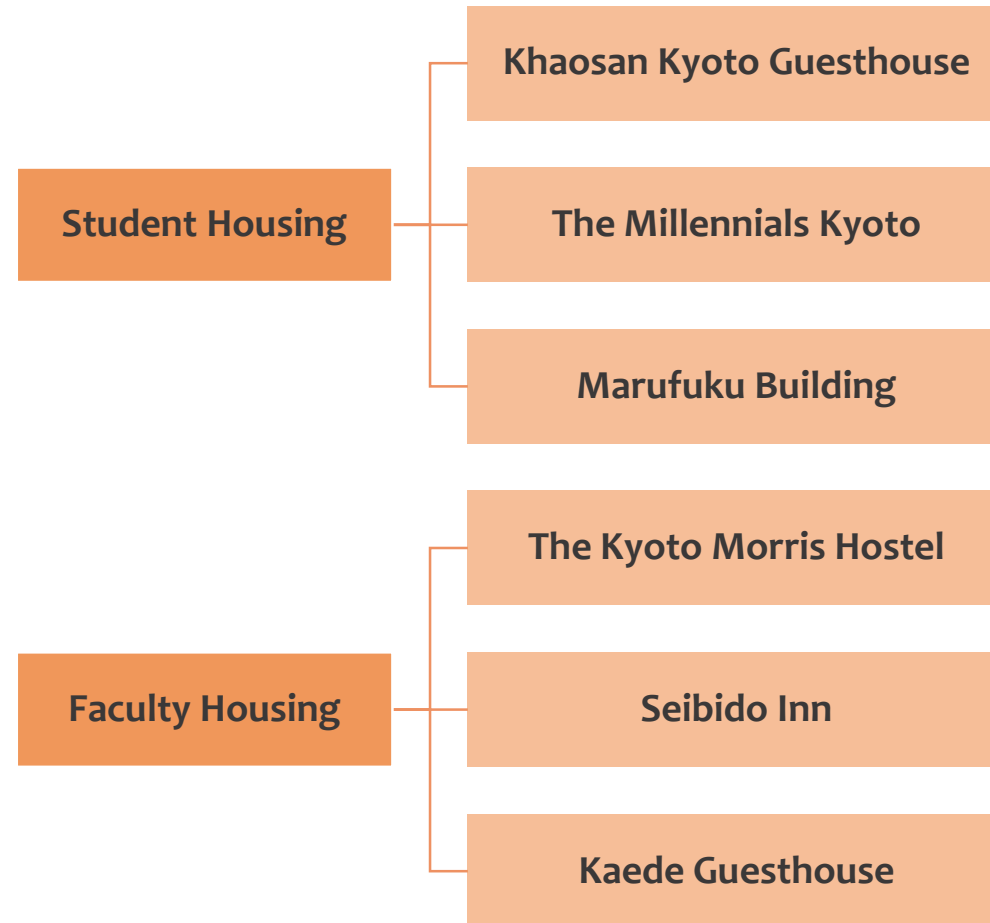
Housing	\$3969.50
On-site Coordinator	\$5000
Workspace	\$2500
Total	\$11,469.50

\*JPY to US dollars as of 2/27/2018

# Evaluated Housing in Kyoto

---

We evaluated **6 potential housing options** for faculty and students in Kyoto.





# Notable Student and Faculty Housing in Kyoto

## Student Housing

### Khaosan Kyoto Guesthouse

- Estimated cost per term for one student: **\$1632.8**
- Nearby supermarket and public transportation
- Safe and touristic neighborhood



## Faculty Housing

### The Kyoto Morris Hostel

- Estimated cost per term for one faculty: **\$2101.5**
- Estimated cost per term for a faculty with its family: **\$3969.5** for up to 4 guest
- Near the Khaosan Kyoto Guesthouse





# Food and Transportation Expenditures for Students in Kyoto

---

## Food Estimates

- 20% higher due to unforeseen expenses

**\$1200**



## Transportation Estimates

- Based of the monthly bus pass in Kyoto
- Calculated for 2 months
- 20% higher due to unforeseen expenses

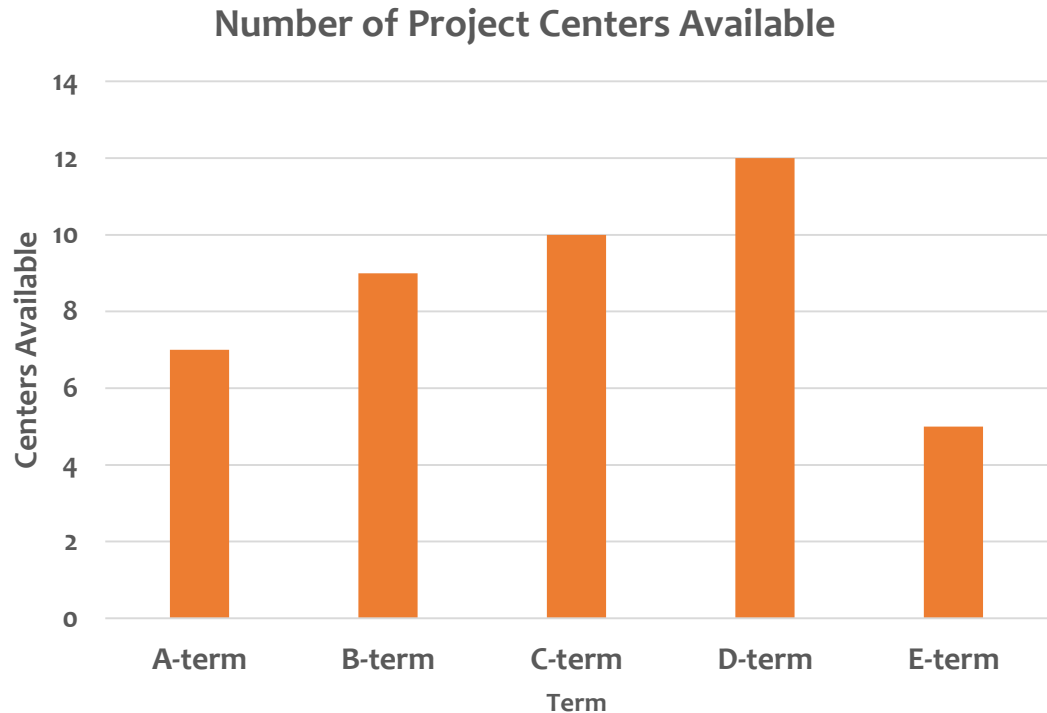
**\$210**



# Why A-term?

Based on data collected from **interviews with site directors, first year students and housing rates.**

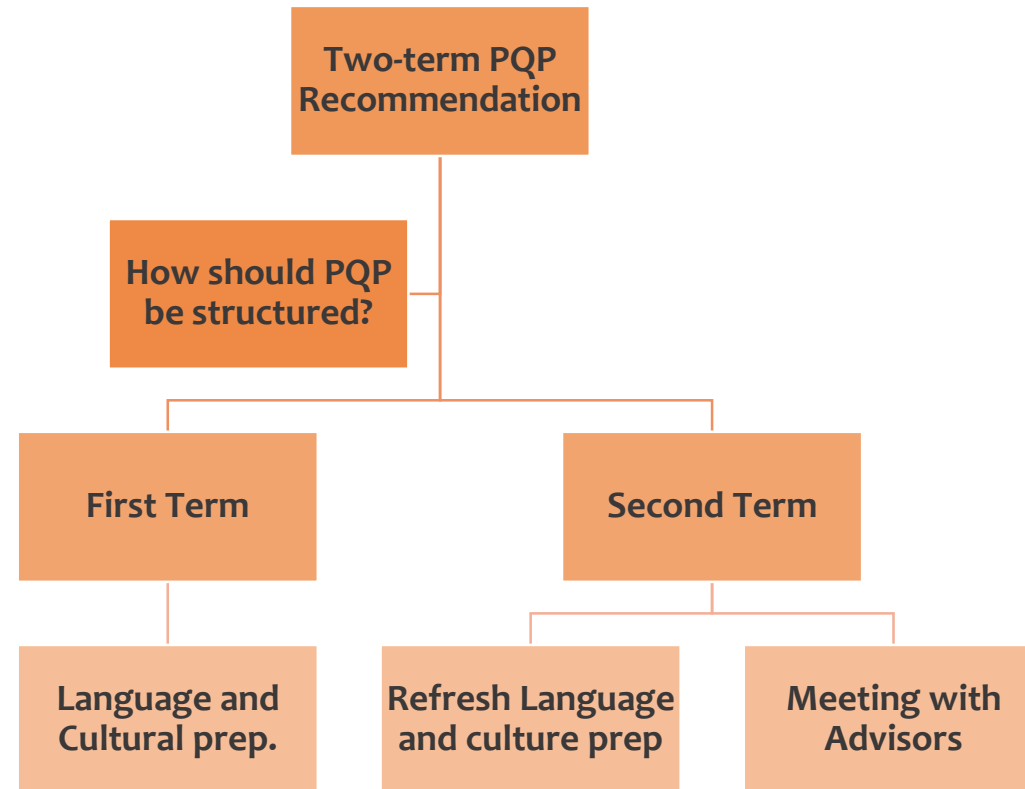
- **Sponsor availability**
  - Midori Farms: does not open in winter
  - Kyoto VR: break during winter
- **IGSD**
  - A-terms requires more options
- **Housing availability**
  - Prices rise of B-term and D-term
- **Advisor Availability**
  - Low faculty interest in D-term
  - Japan MQP is during A-term
- **Student Preference**
  - Although students prefer C/D term



# Two-Term PQP Recommendation

---

- **Other PQP structures**
  - Denmark, India, and Thailand
- **MQP student interviews**
  - Suggested stronger language preparation
- **Survey results of first-year students**
  - 52% of students were willing to take a two-term PQP
- **Personal Experience**
  - More language prep was needed



# Questions?

---

Contact Information: [japanisrpiqp-c18@wpi.edu](mailto:japanisrpiqp-c18@wpi.edu)

# Appendices

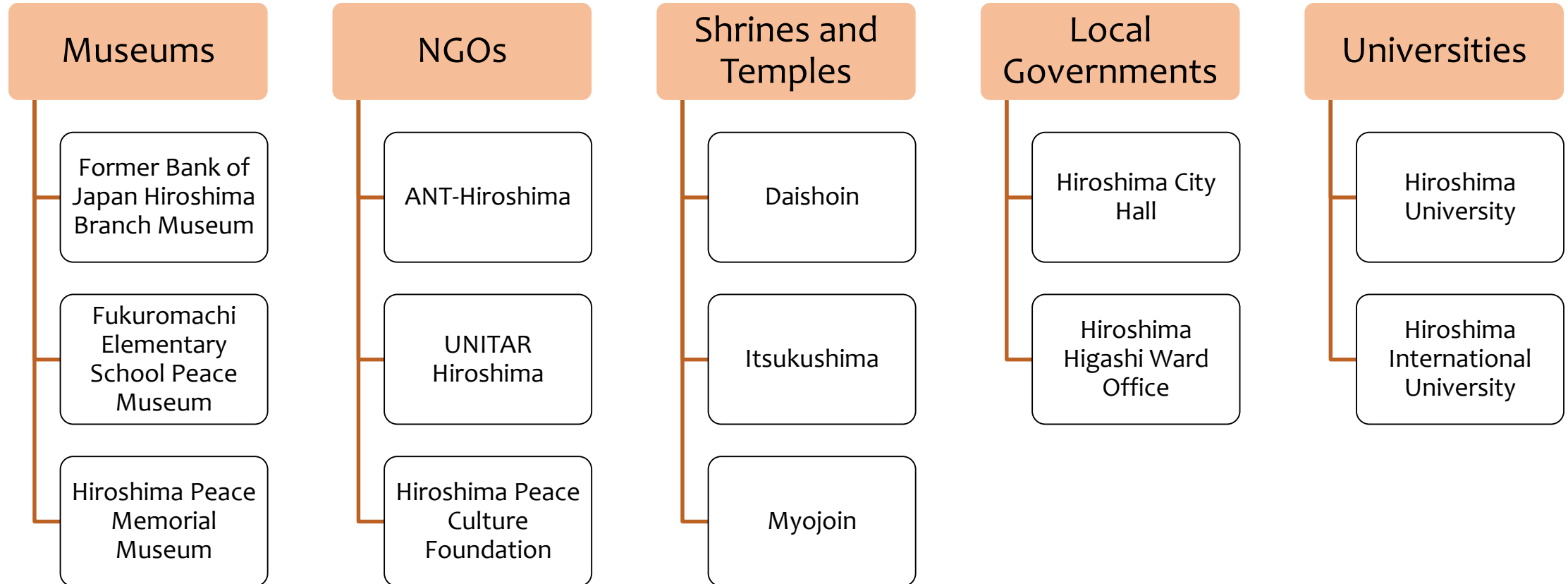
---



# Estimates Calculation

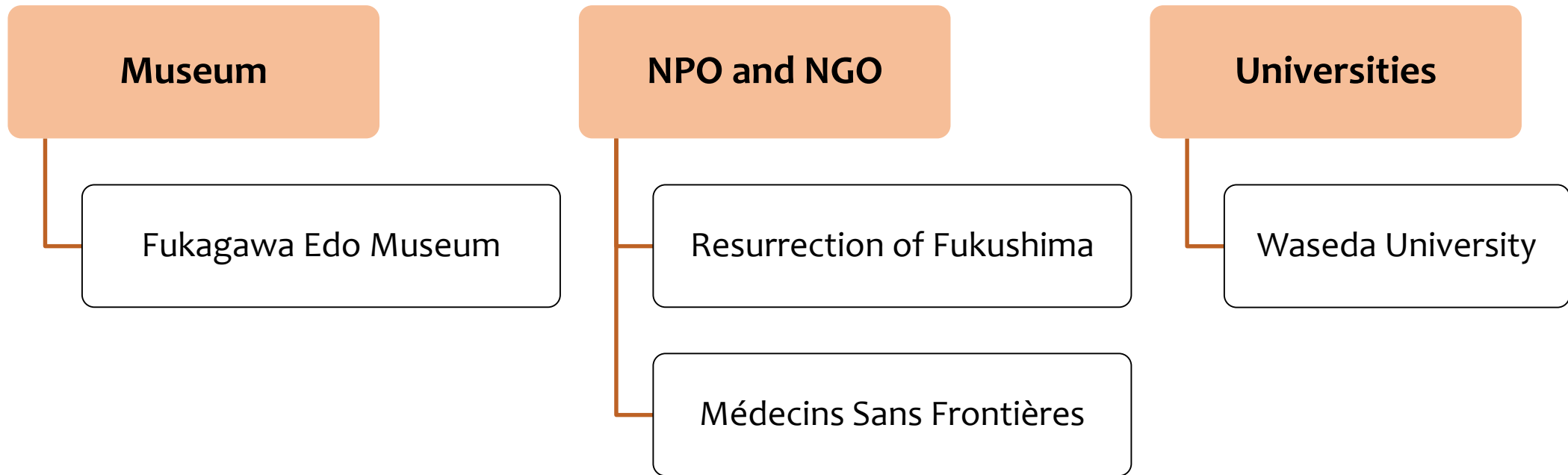
Student				
	Price in Yen			
Housing	3,500.00	*max one night at the Khaozan Kyoto		
Food	987.08	* estimated from our expenses without the 20%		
Transportation	9,240.00	*monthly bus pass in Kyoto		
	Price in Yen	Yen	USD	*conversion as of 2/28/2018
Housing	3,500.00	175,000.00	1,632.80	*for 50 nights at the millennial
Food	106,920.57	128,304.68	1,198.37	*includes the 20% bump
Transportation	9,240.00	22,176.00	207.12	* calculated for 2 months + 20%
Total	-	325,480.68	3,038.29	
Faculty				
1 Faculty	Price in Yen	50 Nights in Yen	USD	*conversion as of 2/27/2018
Housing	4,500.00	225,000.00	2,101.50	*for 50 nights
On-site	-	-	5,000.00	*\$5,000 for on-site coordinator
Workspace	-	-	2,500.00	*\$2,500 to rent workspace
Total	-	-	9,601.50	
Family up to 4	Price in Yen	50 Nights in Yen	USD	*conversion as of 2/27/2018
Housing	8,500.00	425,000.00	3,969.50	*for 50 nights
On-site	-	-	5,000.00	*\$5,000 for on-site coordinator
Workspace	-	-	2,500.00	*\$2,500 to rent workspace
Total	-	-	11,469.50	

# Evaluated Sponsors in Hiroshima



# Evaluated Sponsors in Tokyo

---



# Notable Evaluated Sponsors in Hiroshima and Tokyo

We established potential **partnerships with 5 organizations** in Hiroshima and Tokyo.

ANT-Hiroshima



UNITAR



Resurrection of  
Fukushima



Médecins Sans  
Frontières



Waseda  
University



# ANT-Hiroshima

---

- Organization dedicated to spreading Hiroshima's message of peace and hope to the world
- Upon meeting, enthusiastic about working with WPI.

## Possible projects include:

- Educational programs and trainings
- Conservation of A-bomb trees
- Assessment and strategies to more effectively spread their mission
- English support in the international efforts





# UNITAR-Hiroshima

- Acknowledged that partnership with WPI will be very beneficial.
- Unable to establish a partnership for 2018 and 2019.
- However, they would consider a partnership in the future.

## Possible projects include:

- Development of educational programs and trainings.
- Projects assistance.
- Youth involvement.



# Resurrection Fukushima in Tokyo

---

- Works to make the area affected by the Fukushima Daiichi nuclear plant melted down habitable.
- Upon meeting, enthusiastic about working with WPI because they would like the younger generation to know the truth about the impact of nuclear disasters

## Possible projects include:

- Data analysis and collection.
- Developing decontaminations strategies.
- Strategies to bring youth back to the communities.
- Develop strategies to assist villagers rebuild their former lives



# Médecins Sans Frontières in Tokyo

---

- International organization that **aims to provide medical services** to people affected by armed conflict, epidemics, natural disasters and unable to access medical care.
- Enthusiastic about working with WPI since they have a limited staff and all the Asia operations are organized in the Tokyo office.

## Possible projects include:

- Assessment of their fundraising strategies.
- Data collection from their efforts in Asia.
- Development of educational and training programs.
- Assessment of their human resources strategies.



# Waseda University

---

- Prestigious private university in Tokyo.
- Upon meeting, enthusiastic bout working with WPI.
- Able to consider a partnership in about 2 to 3 years.





# Khaosan Kyoto Guesthouse

---

- **Fire Safety:**
  - Multiple clearly marked fire exits
  - Fire extinguishers
  - Working smoke detectors
  - Fire Escape
- **Security:**
  - Secure entrances
  - Solid external doors
  - Locks on windows and doors
- **Working Appliances:**
  - Shared Kitchen with:
    - Stove
    - Oven
    - Microwave
    - Refrigerator
  - Laundry Facilities nearby
  - Internet is available
- **Neighborhood:**
  - Safe and well lit area
  - Access to public transportation
  - Nearby shopping and restaurants.
- **Transportation:**
  - Nearby bus line, metro station, and taxi services.
  - Nearby metro station
  - Reliable taxi service
- **Multi-floor Building:**
  - Working elevator
  - Multiple staircases
  - Fire escape
- **Shared Apartment:**
  - Multiple bedrooms
  - Multiple bathrooms



# Kyoto Morris Hostel

- **Fire Safety:**
  - Clearly marked fire exits
  - Fire extinguishers
  - Smoke detectors
- **Security:**
  - Secure entrances
  - Solid external doors
  - Locks on windows
- **Working Appliances:**
  - Shared Kitchen
  - Laundry Facilities
  - Hot Water in kitchen & Bath
- **Neighborhood:**
  - Safe surroundings
  - Well-lit outside
  - Access to public transportation
  - Access to shopping
    - 2 convient stores, 1-3 min walk
  - Access to restaurants

- **Transportation:**
  - Bus Line:  
Kawaramachi-Marutamachi Bus Stop, 3 min walk.
  - Metro/Subway:  
Kyoto Shiyakusho-mae Station, 7 min walk.
  - Reliable Taxi Service
  - Walking distance to student housing
- **Multi-floor Building:**
  - Working Elevator
  - Multiple stairways
  - Fire escape
- **Shared Apartment:**
  - Locks on bedroom doors
  - Locks on bathroom doors

