



Extension of Grid Portal Functionalities with Collection and Visualization of Usage Statistics

Major Qualifying Project

Alessandra Anderson

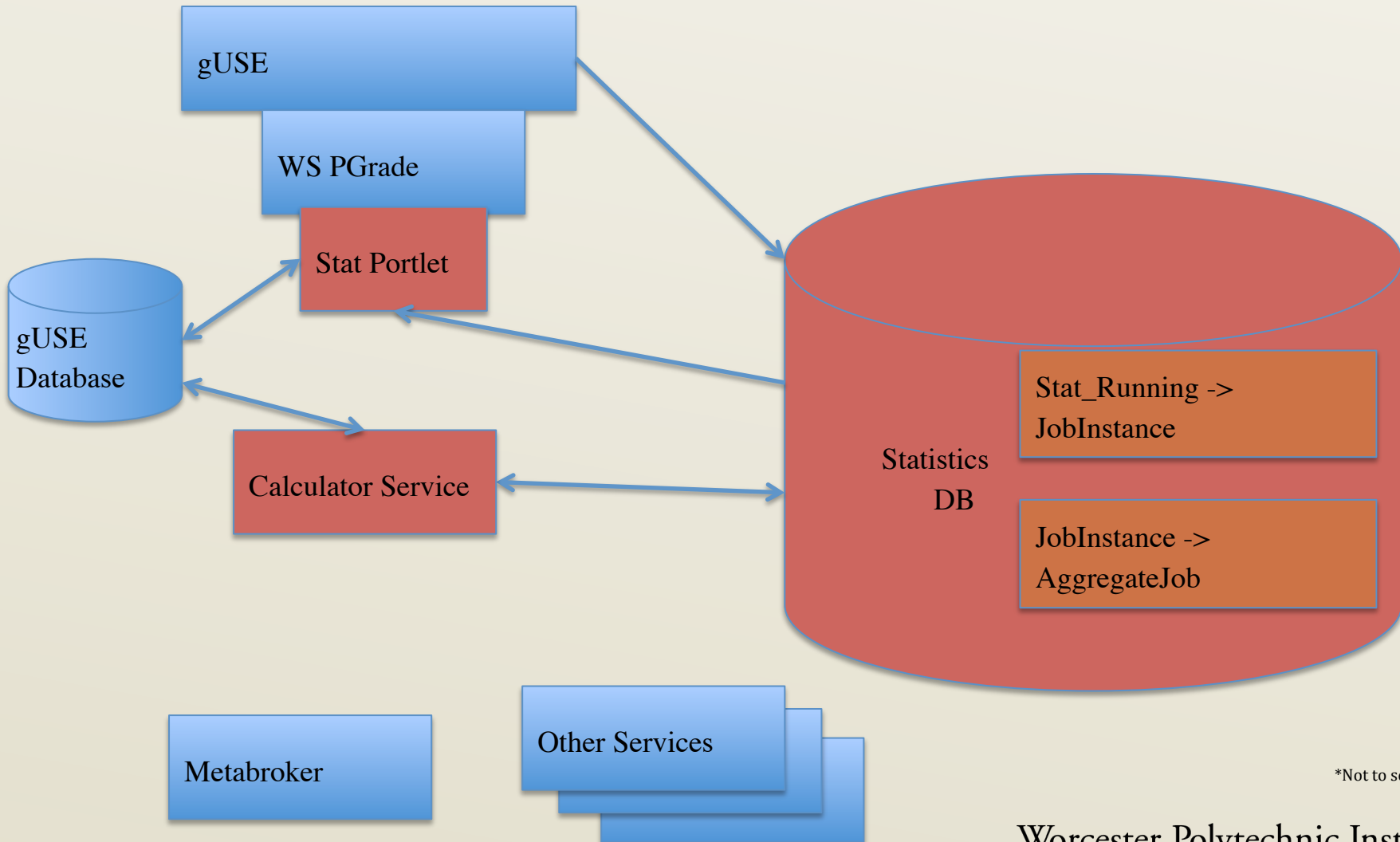
Sam Moniz



Project Statement

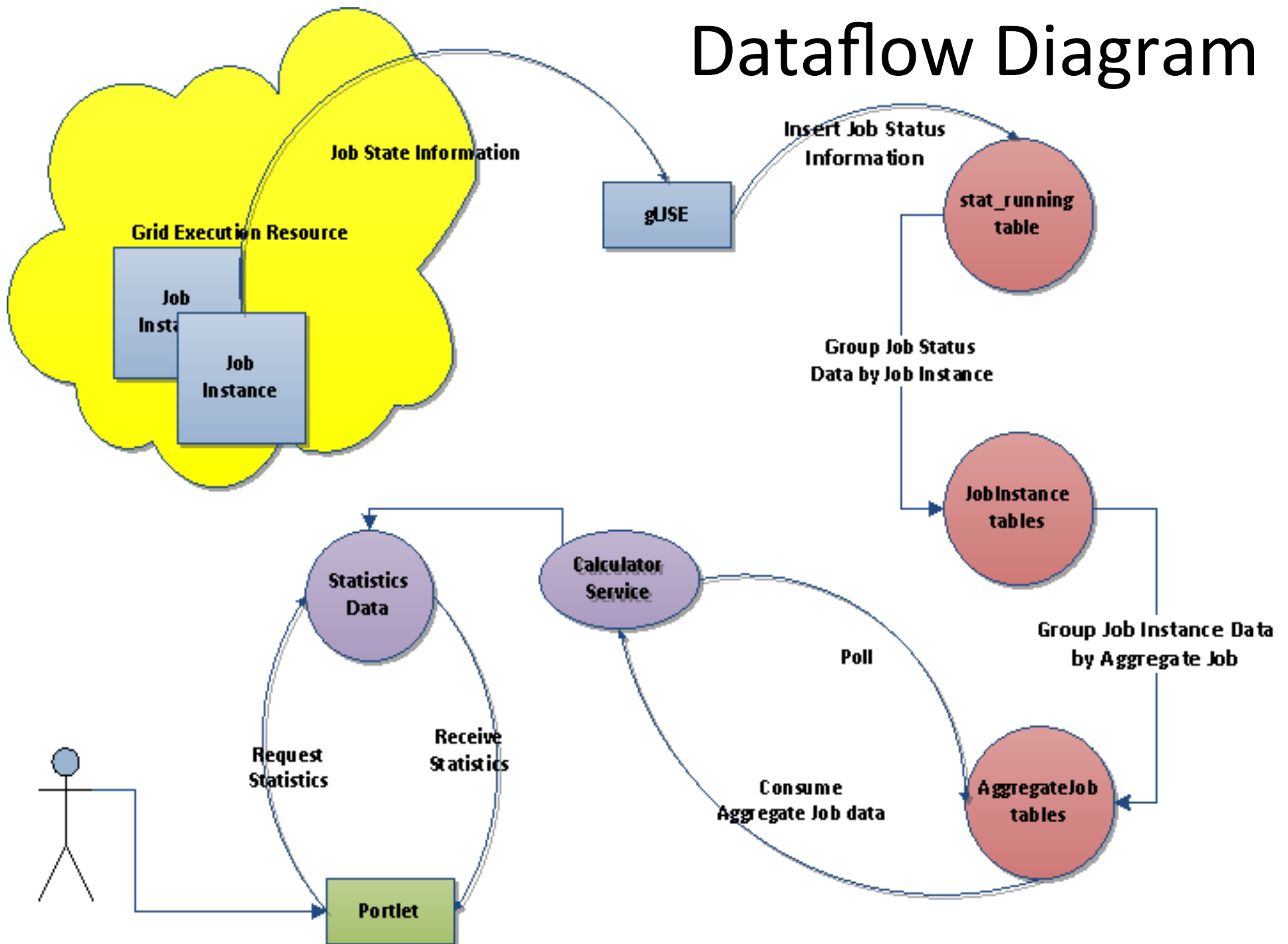
- Objective
 - Integrate a new service into the WS-P-GRADE Grid Portal
 - Data Collection
 - Metric Calculation
 - Metric Visualization

Architecture



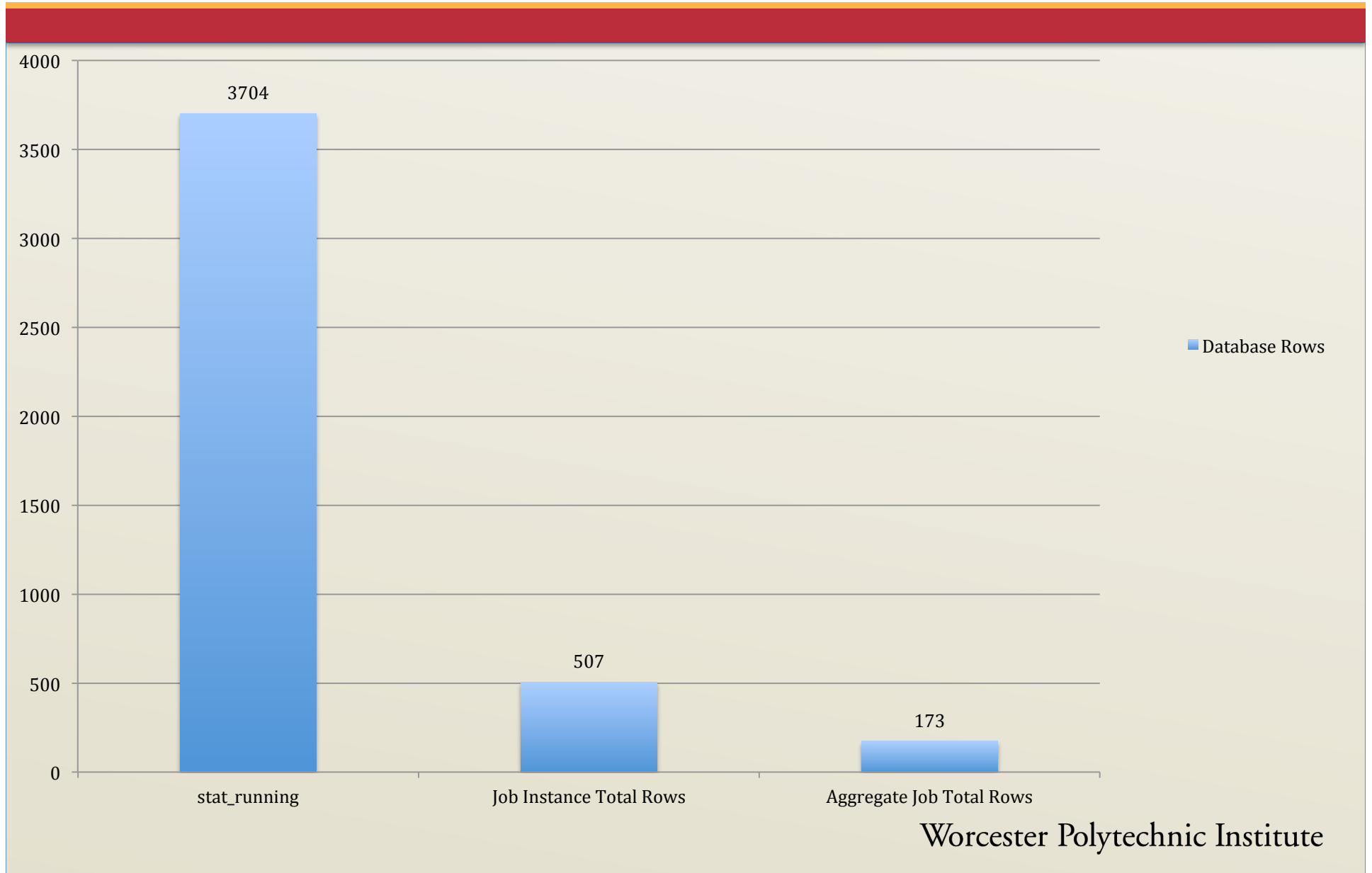
*Not to scale

Dataflow Diagram



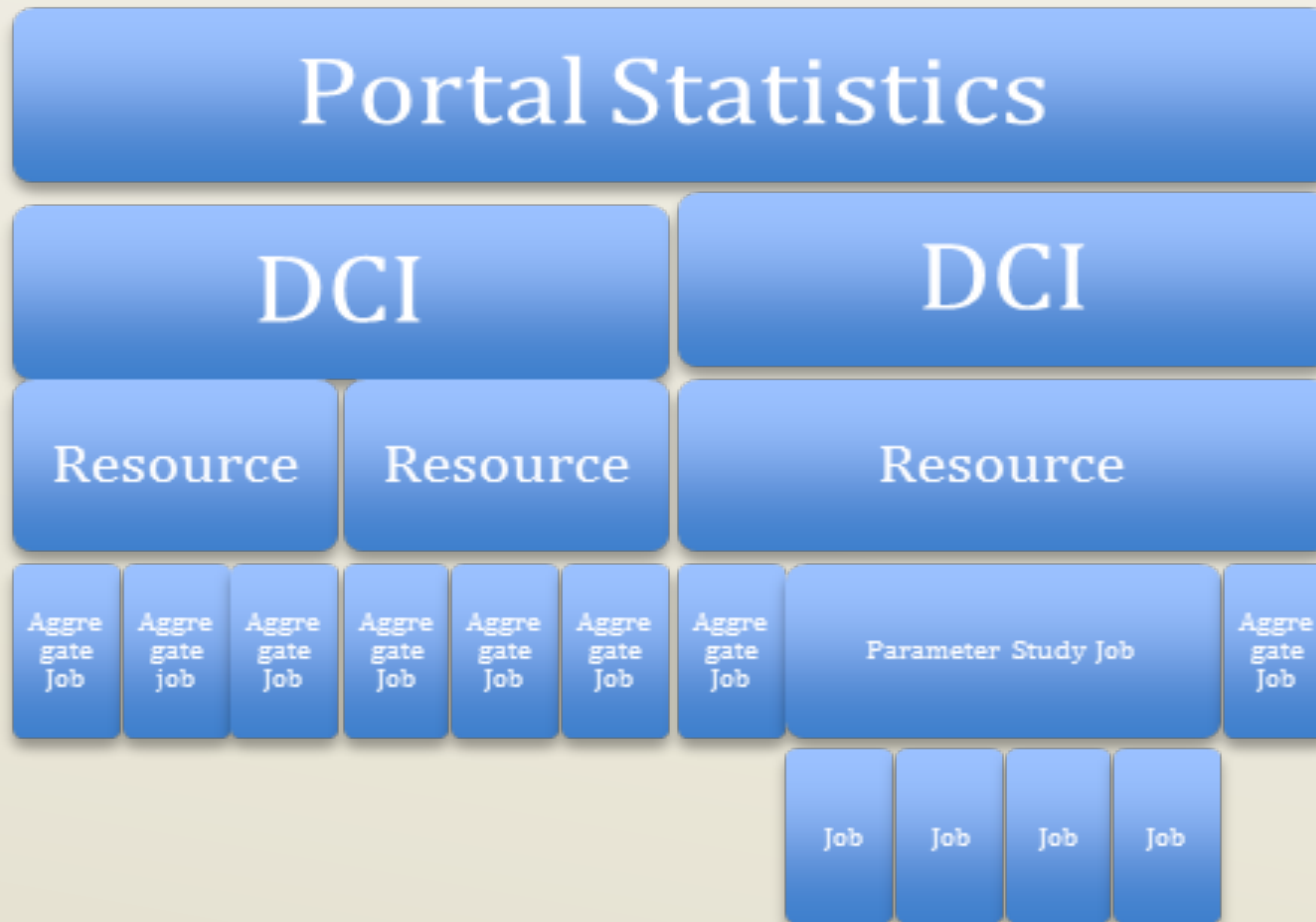


Database Aggregation





Data Aggregation and Calculation

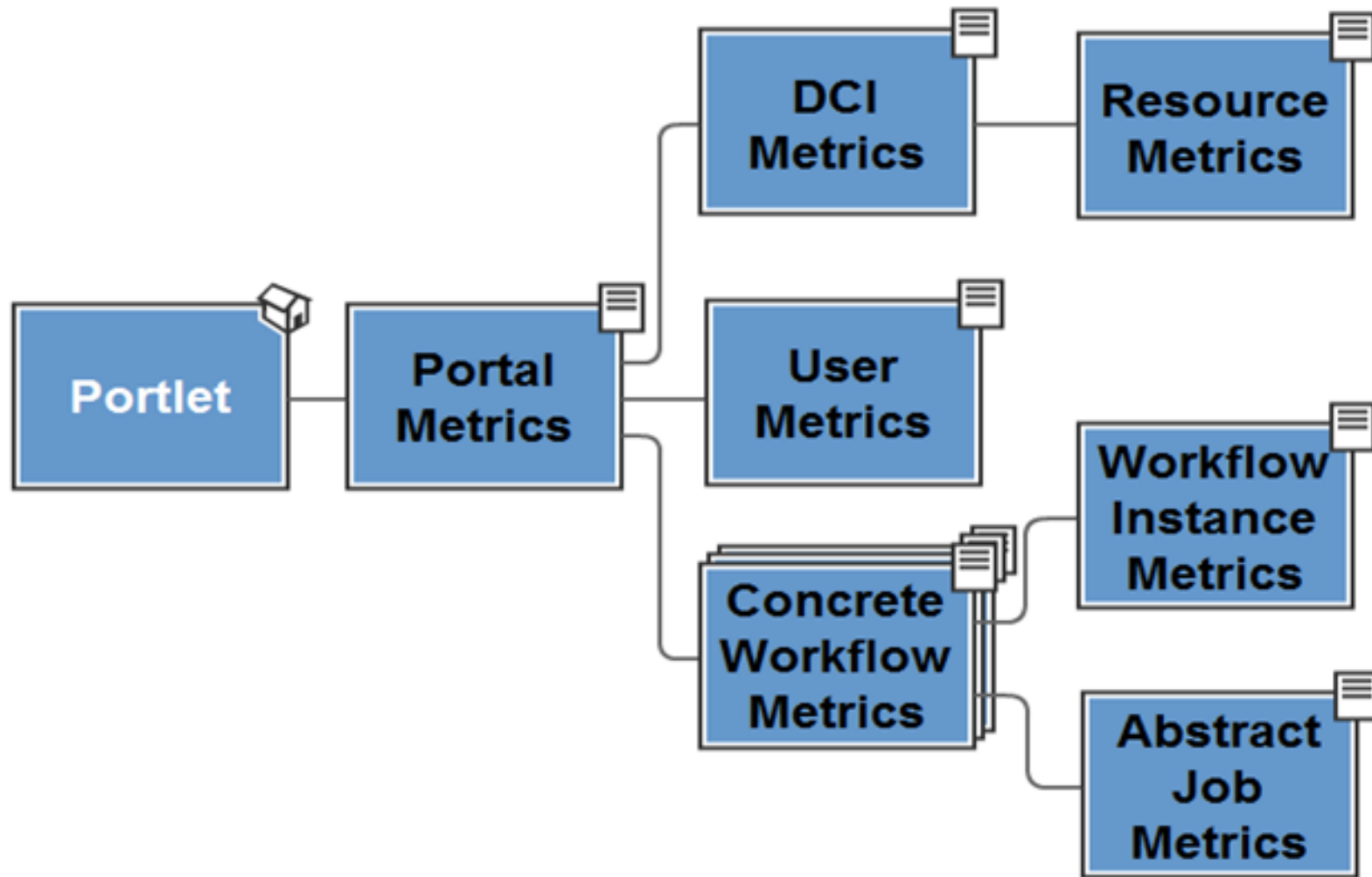


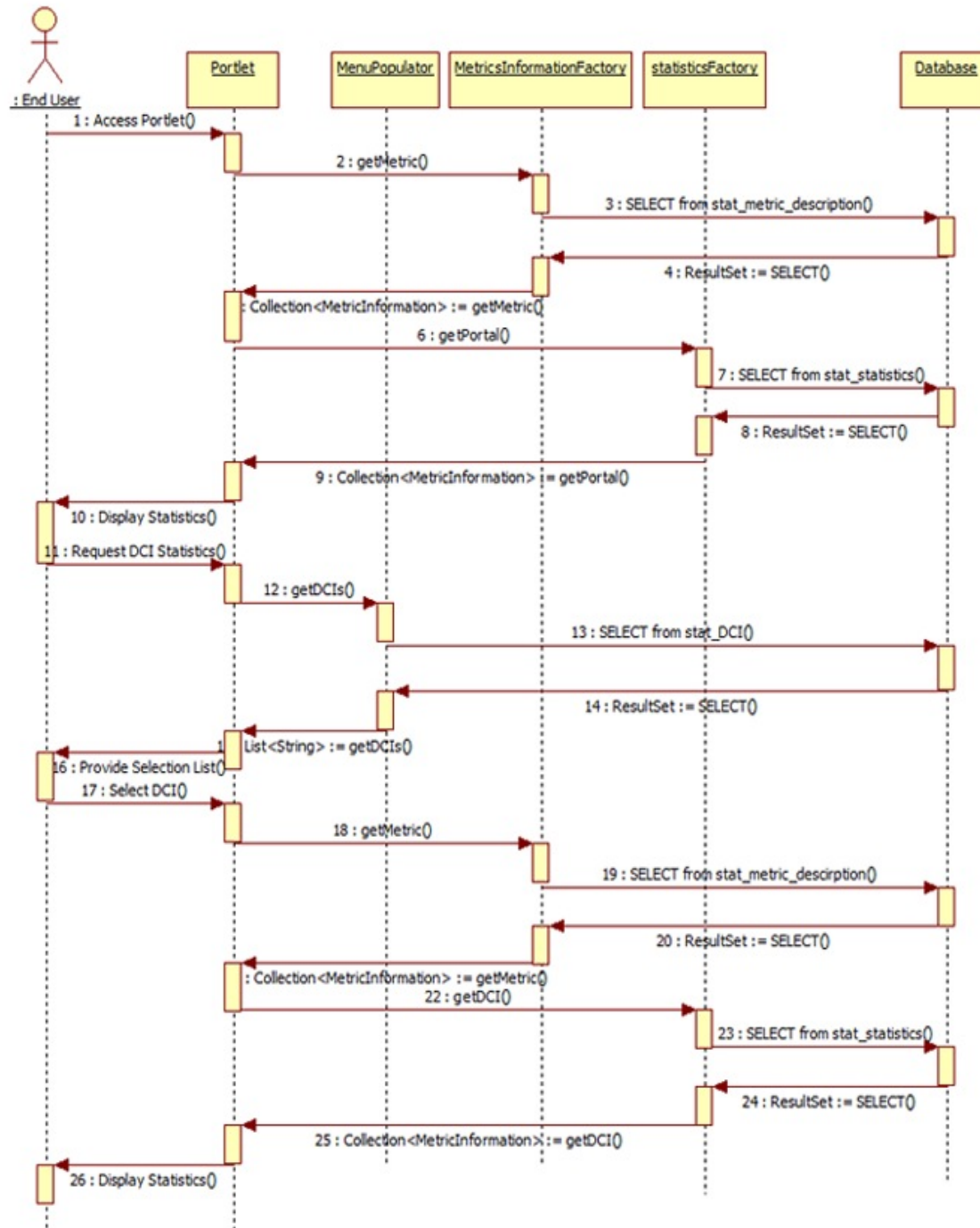


Goals of UI

- Show different levels of metrics
 - Portal
 - User
 - DCI
 - Resource
 - Concrete Workflow
 - Workflow Instance
 - Abstract Job
- Intuitive Interface
- Similarity with rest of WS-PGRADE

Functionality Of UI





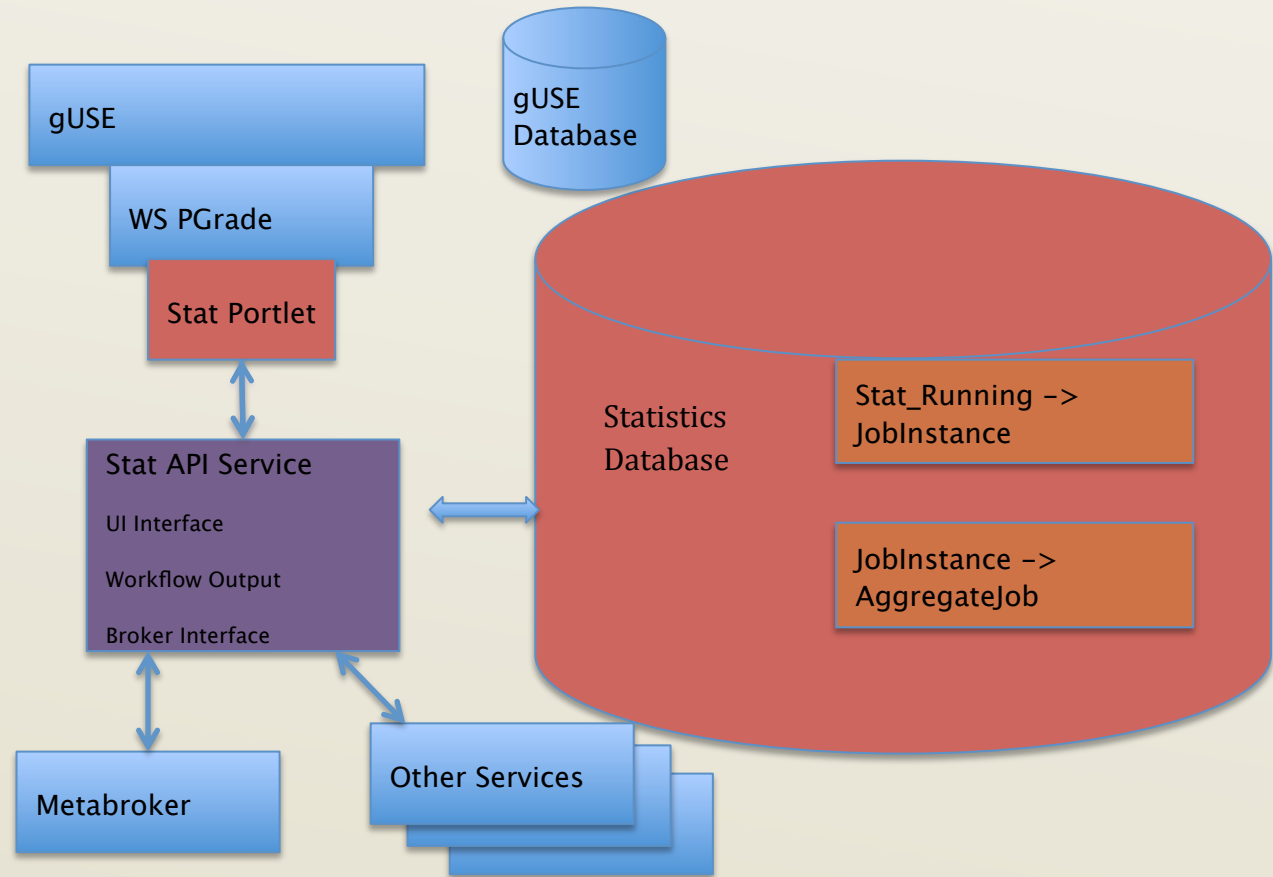


Demo



FUTURE WORK

Architecture Improvements: API





Other Services

Future Work



More Metrics

Future Work



UI Enhancements

Future Work



Acknowledgements

- MTA SZTAKI
- LPDS
- Professor Dr. Péter Kacsuk
- Dr. Miklós Kozlovsky
- LPDS Staff
 - Ákos Balaskó
 - Krisztián Karóczkai
 - Kitti Varga
 - Réka Makkos
 - Sándor Ács
 - Gábor Herman
- Advisors
 - Professor Gábor Sárközy
 - Professor Stanley Selkow

Questions



Worcester Polytechnic Institute