



From Macro to Micro: Social Determinants of COVID-19 & Nasopharyngeal Features Associated with Disease Progression

A Study of COVID-19 in Worcester, Massachusetts

Christopher Tocci

Biology/Biotechnology & Professional Writing

Advisors: Brenton Faber (WPI), Reeta Rao (WPI), John Haran (UMass), Evan Bradley (UMass)

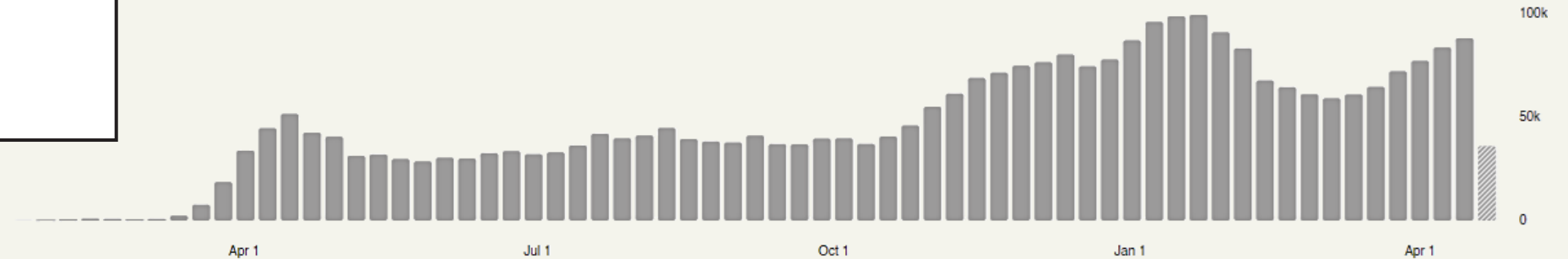
COVID-19 is a Global Crisis

3,128,962

deaths*

Source: World Health Organization

▨ Data may be incomplete for the current day or week.



983,410,283 vaccine doses

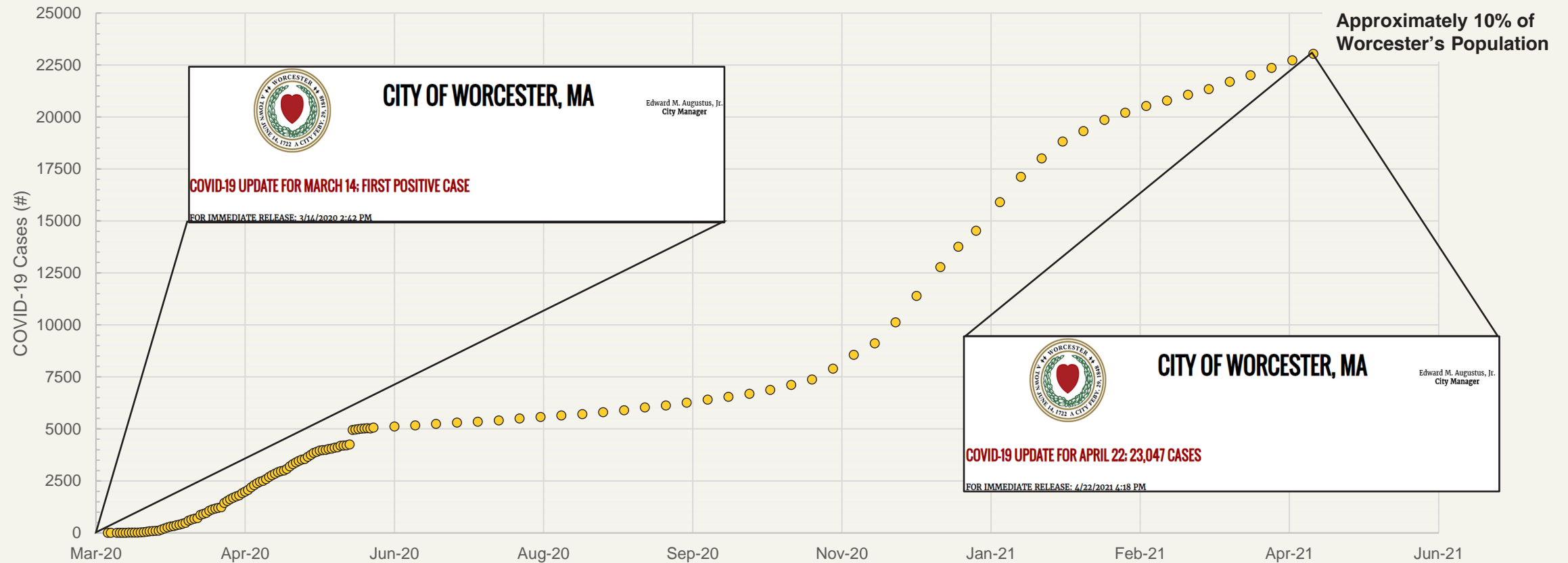
have been administered^

*: Globally, as of 5:16pm CEST, 28 April 2021, as reported by WHO


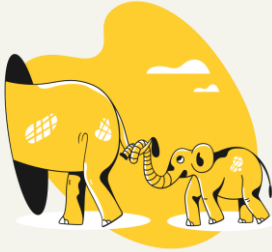



^: As of 28 April 2021

COVID-19 Dramatically Hit Worcester

Cumulative COVID-19 Cases in Worcester, MA (Mar. 2020 - Apr. 2021)



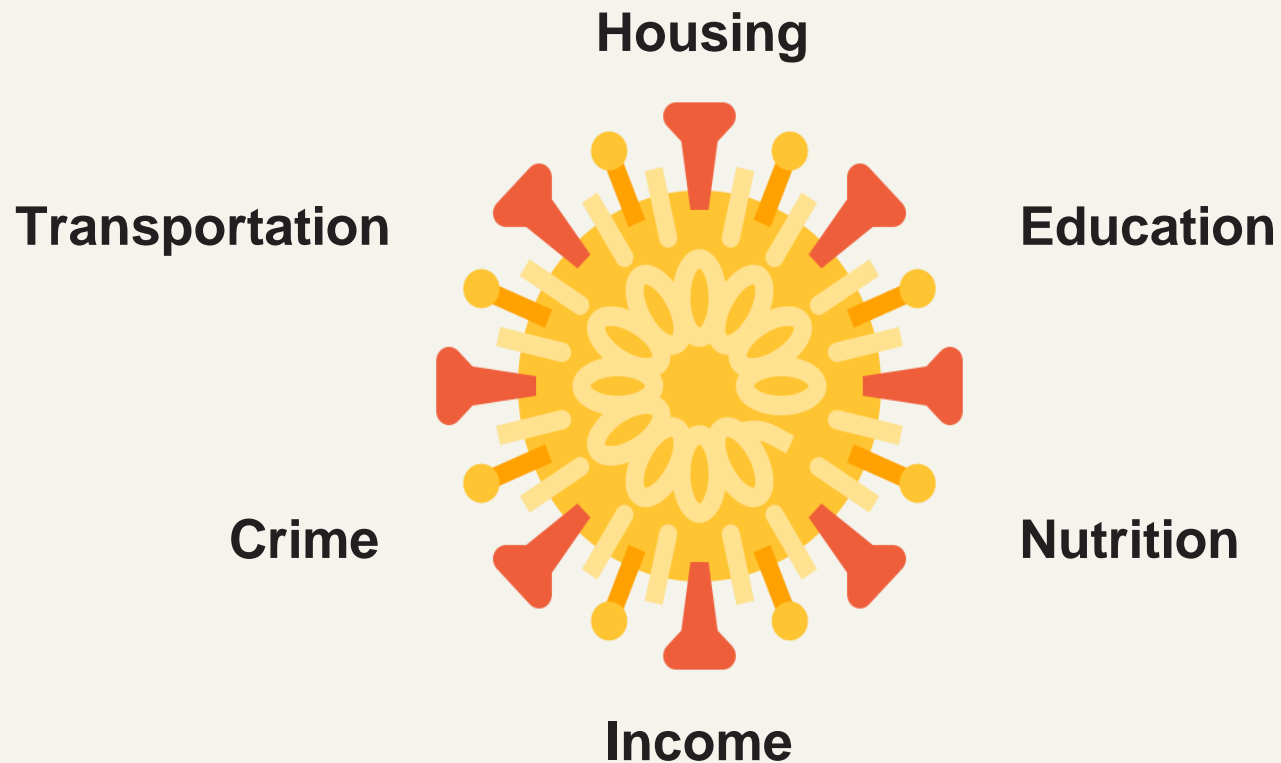
Is Your Health In Your Hands?

Genetics	Environment	Behavior	Medical Care	Social Factors
				

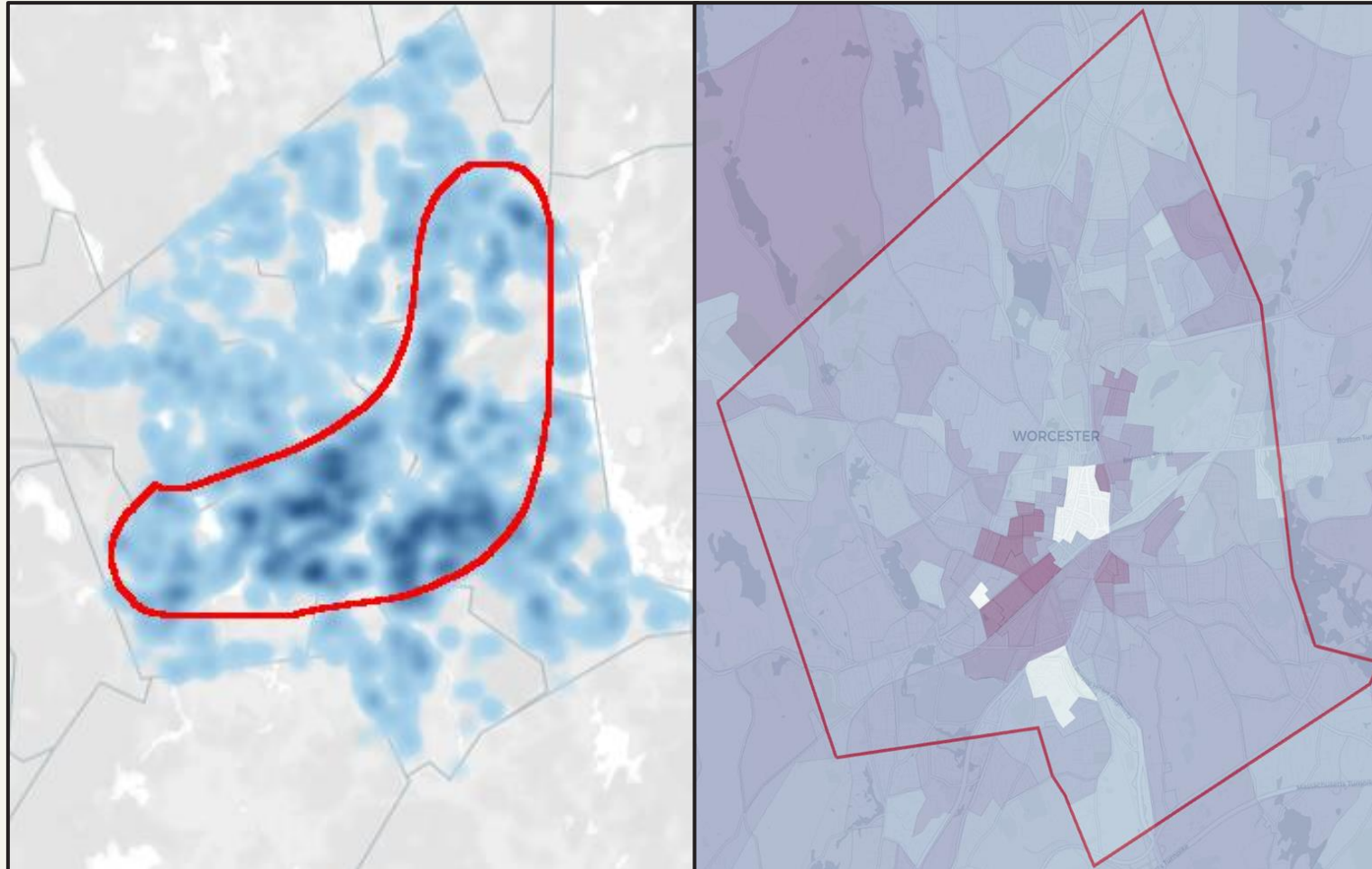
To Examine the **Social Factors** Correlated to COVID-19 Prevalence in Worcester, MA

Primary Research Goal

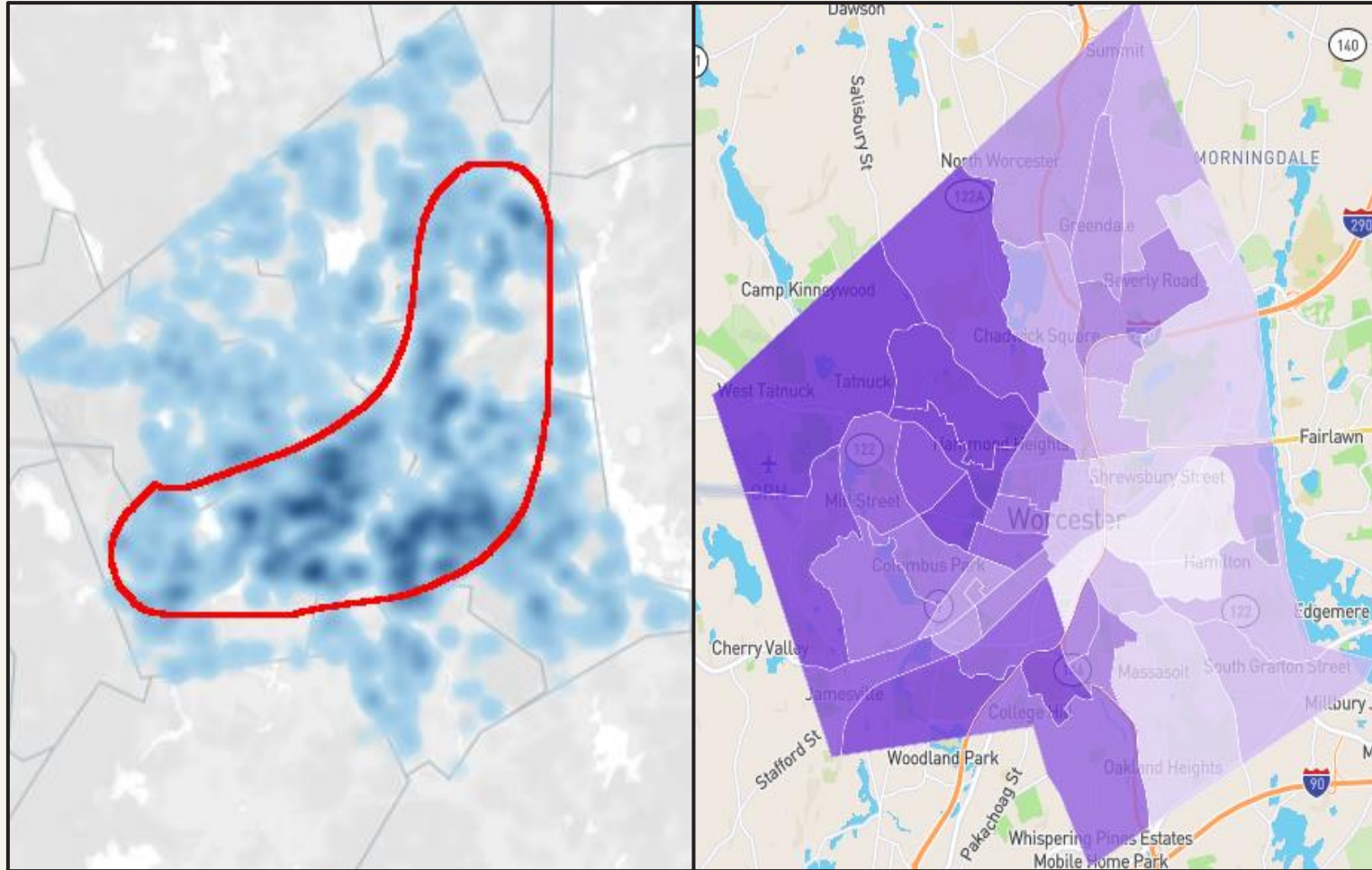
Social Factors Associated With Health Outcomes Are Connected & Compounding



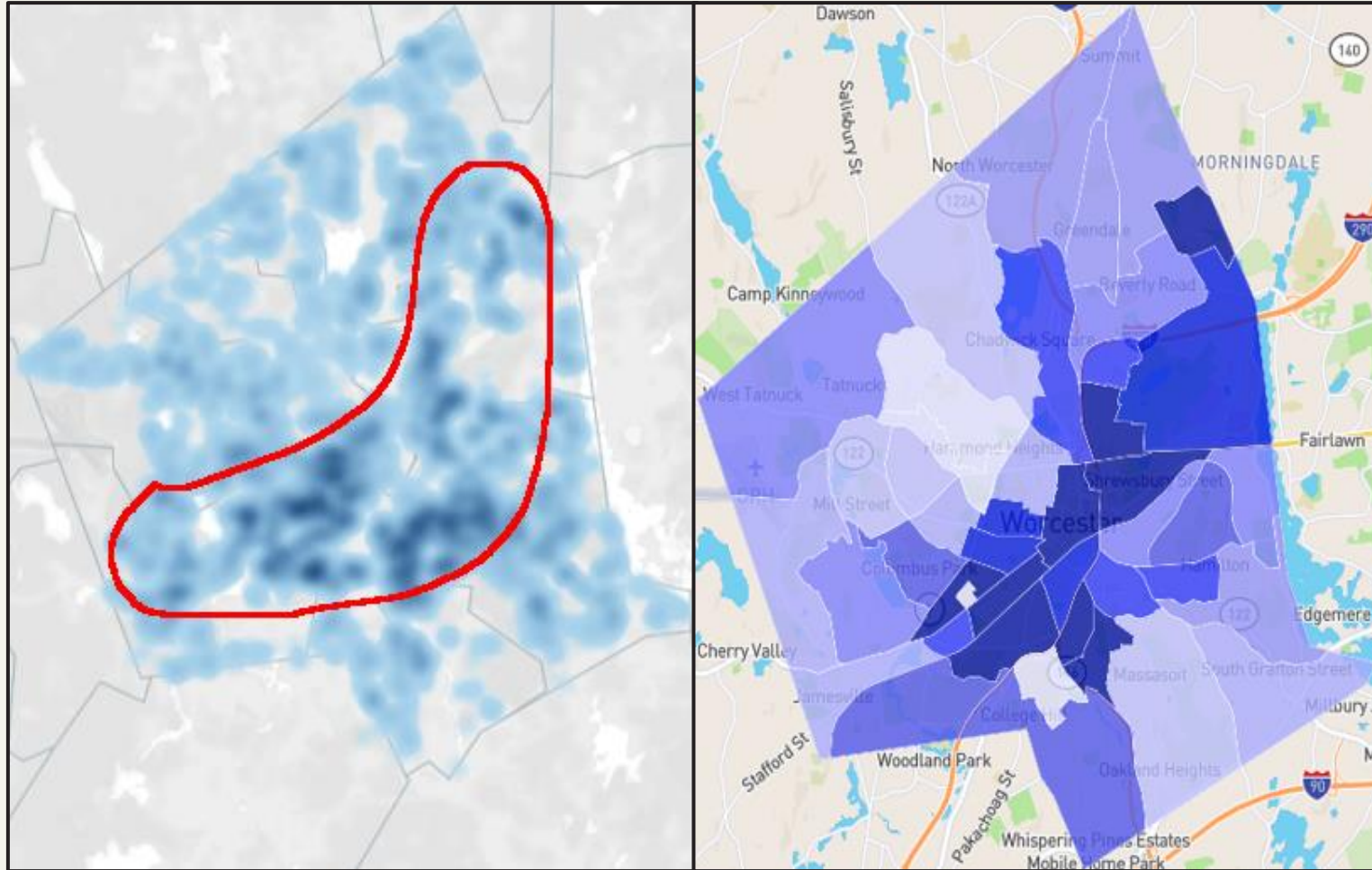
Average Family Size



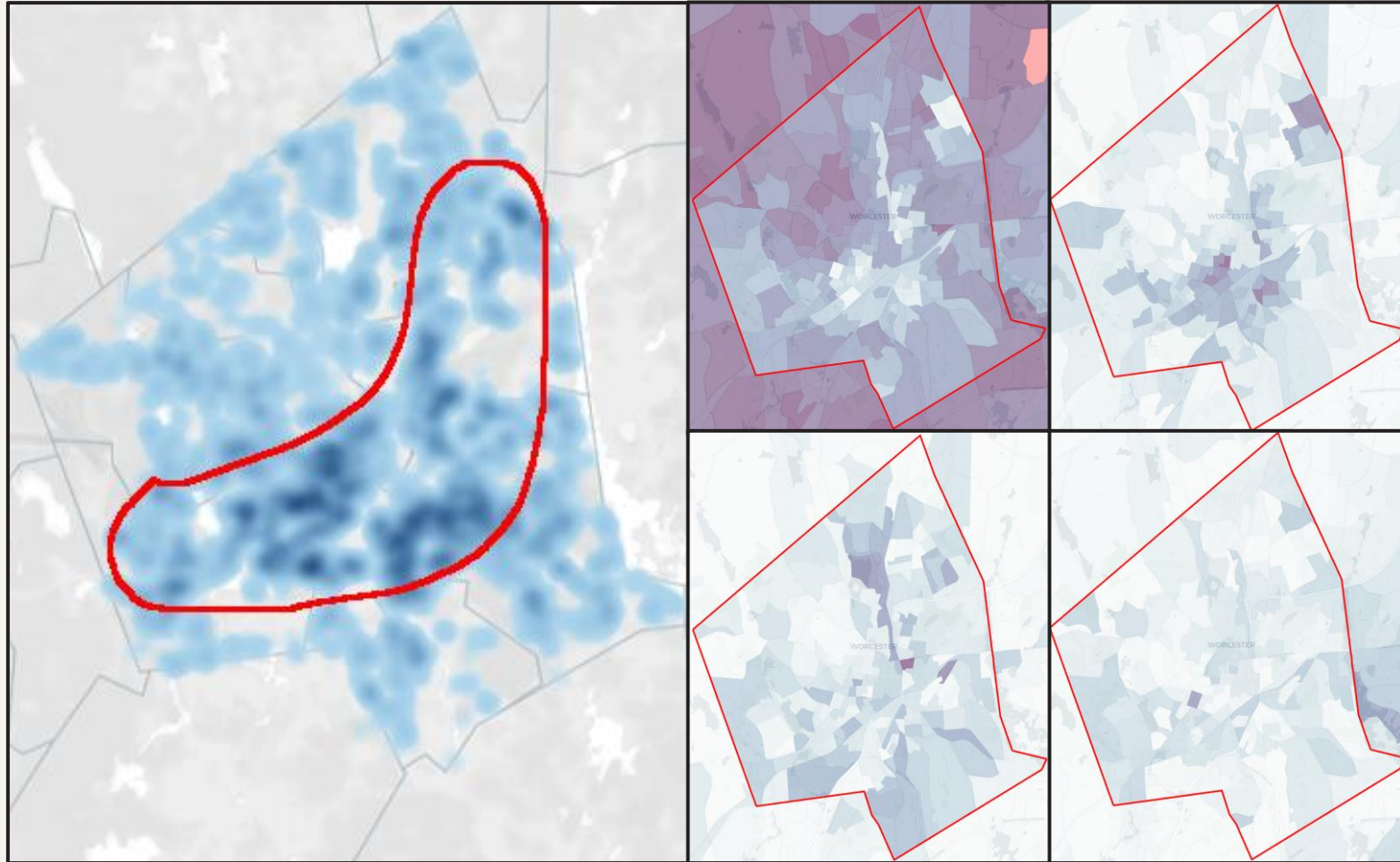
Best Schools by Proximity



Crime Rate

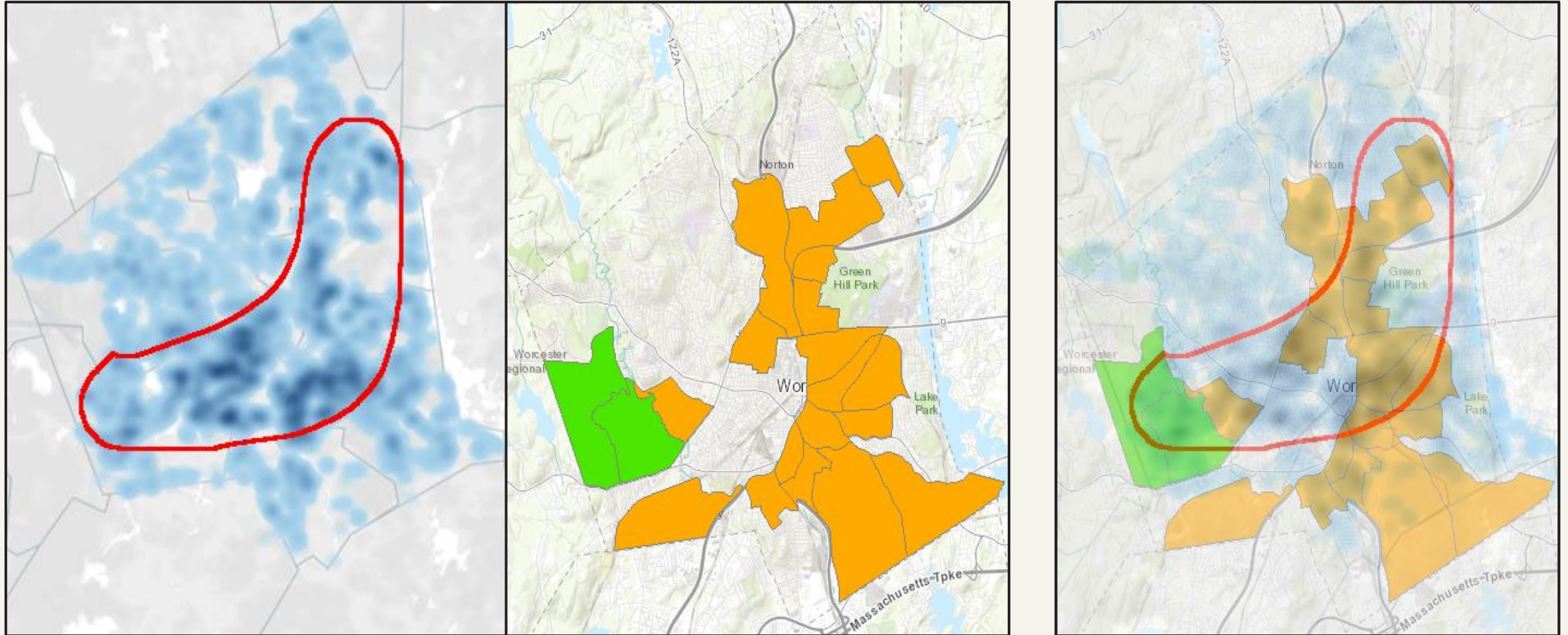


Demographics

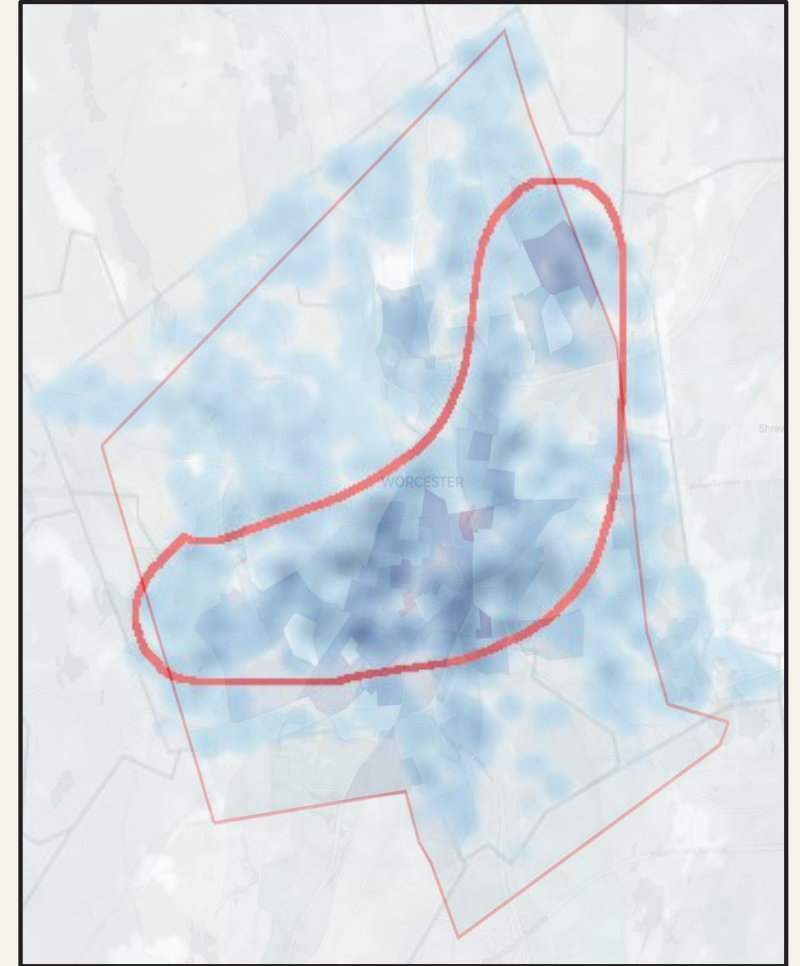
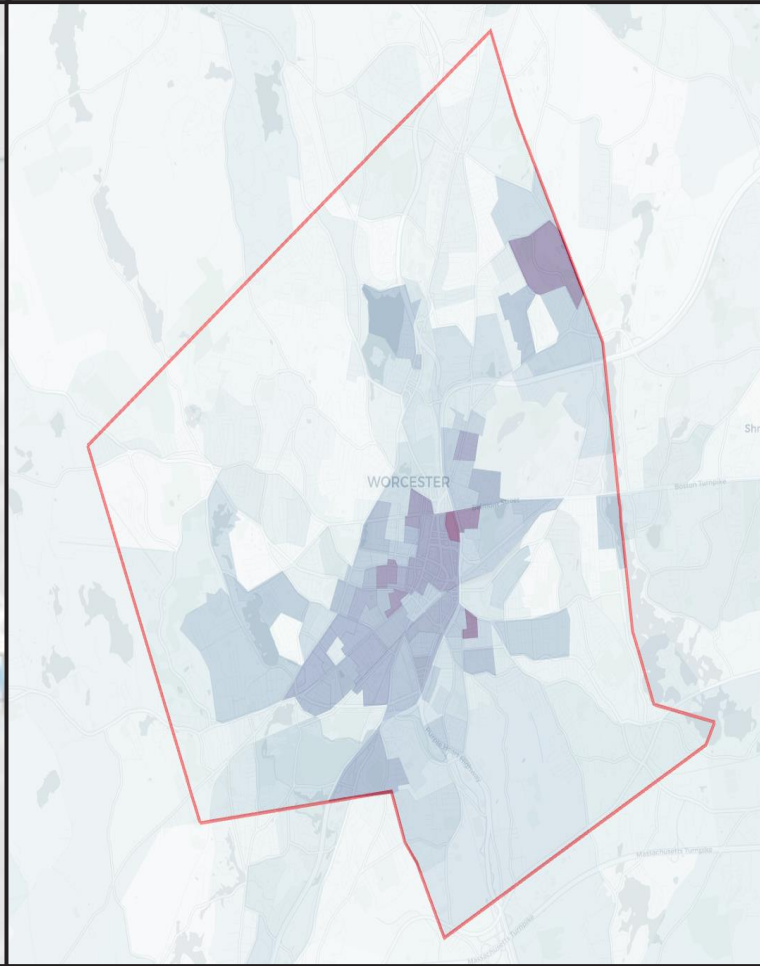
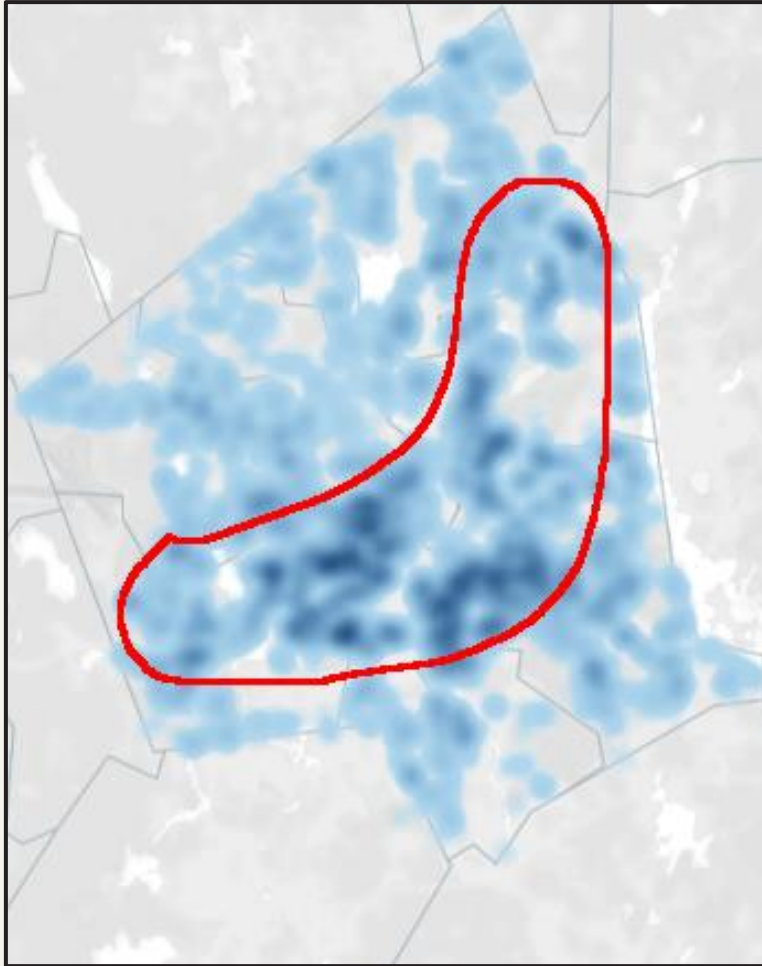


Hotspots

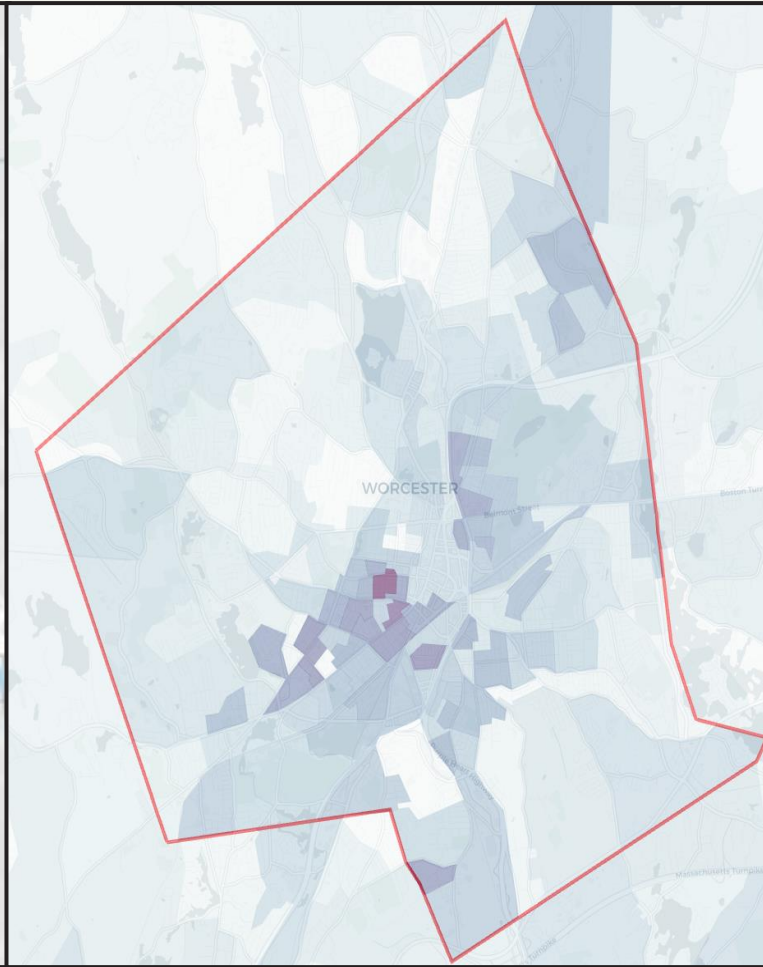
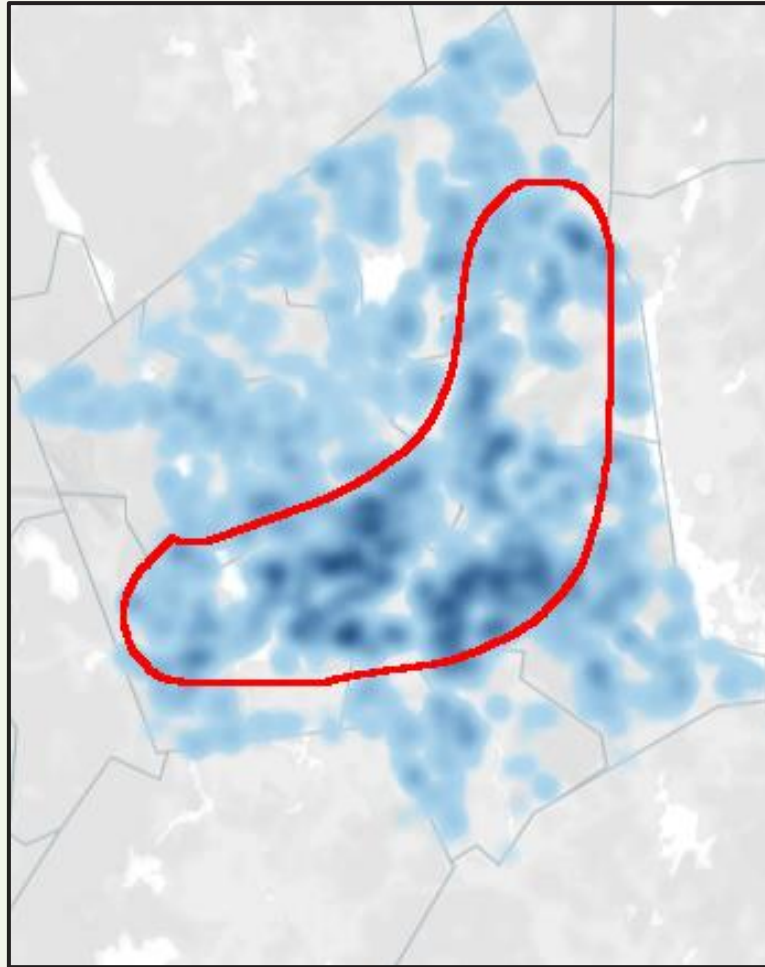
Food Desert



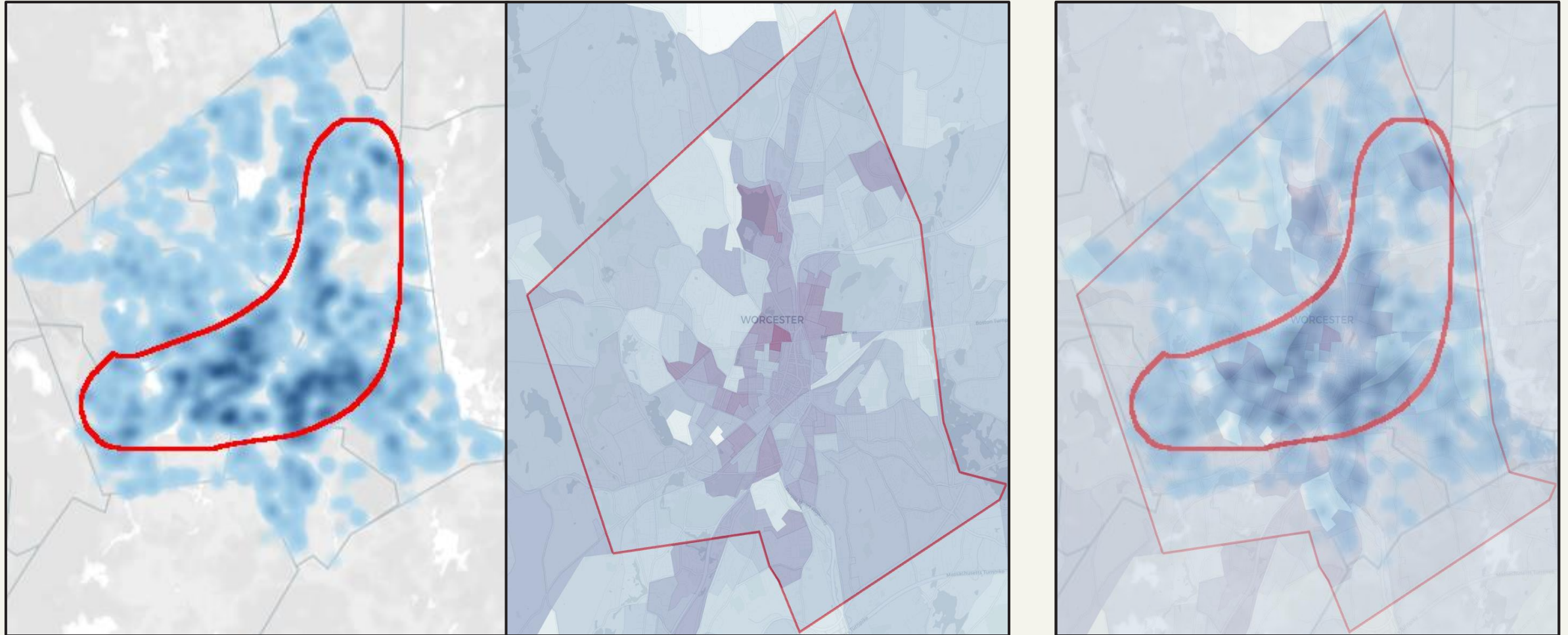
Income Below Poverty



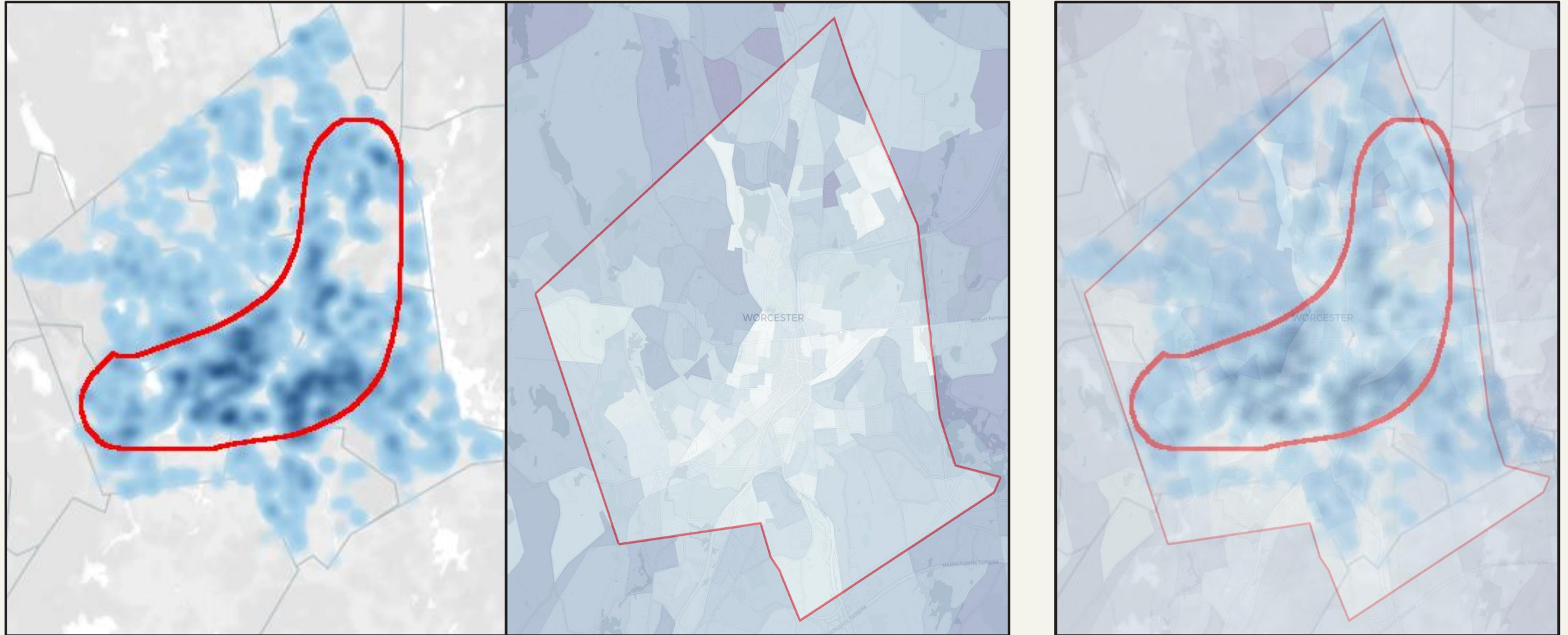
Less than High School Education



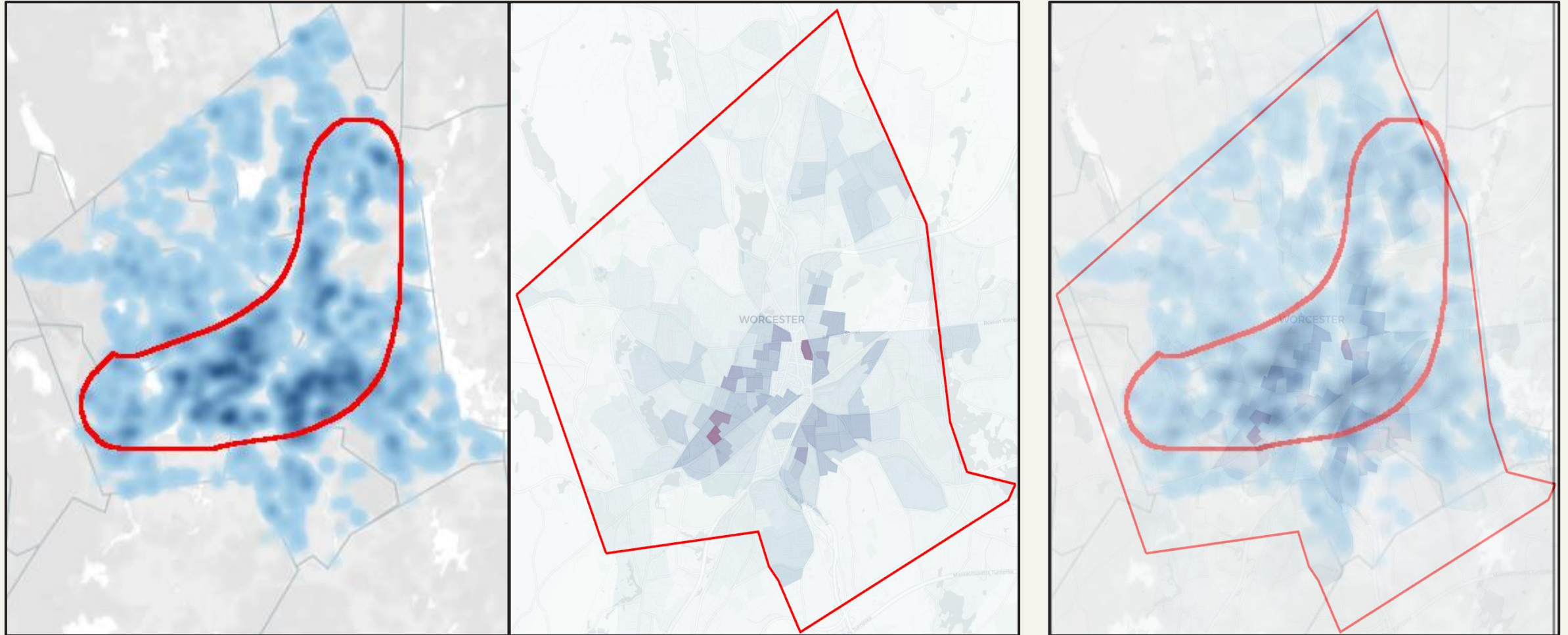
Meals from Fast Food Per Week



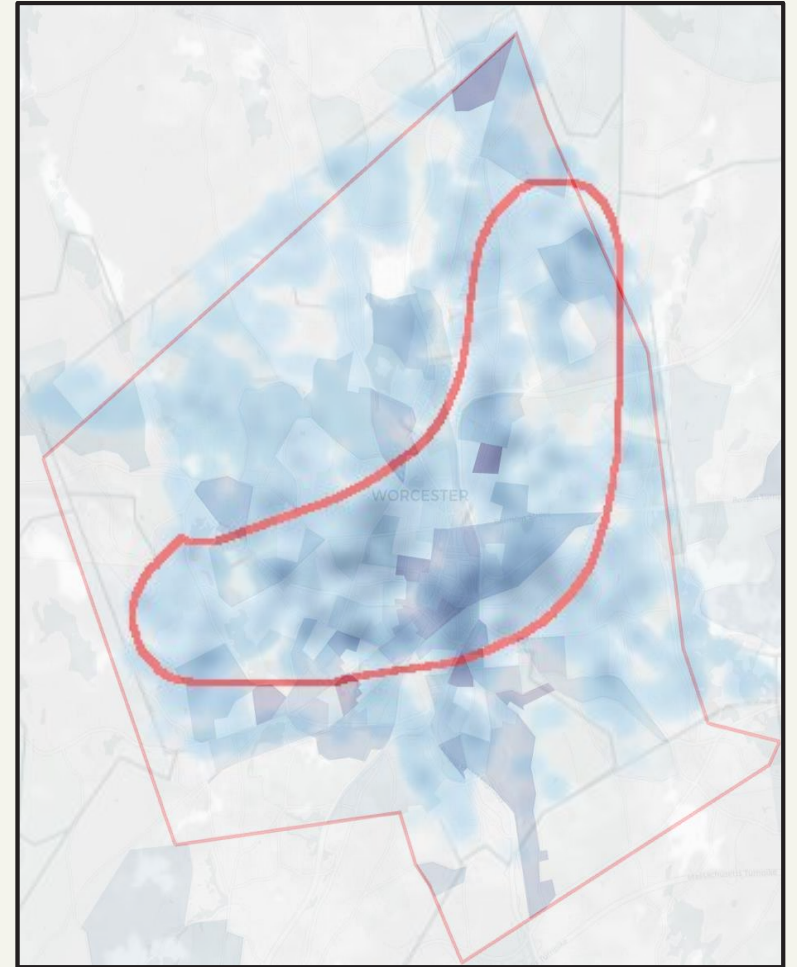
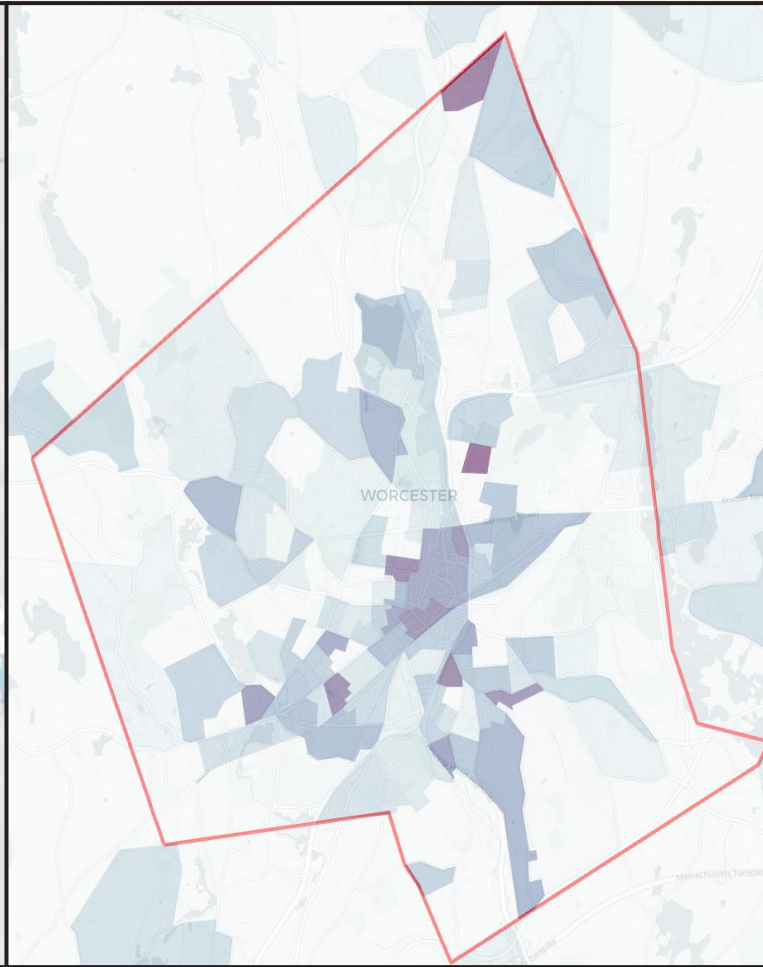
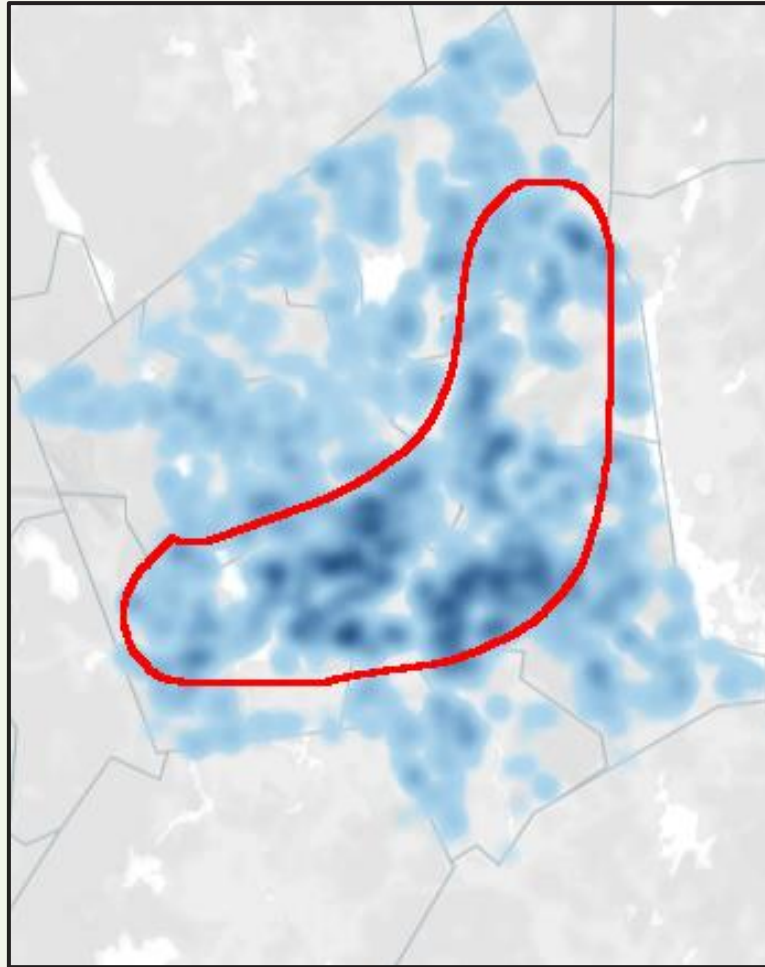
Median Household Income



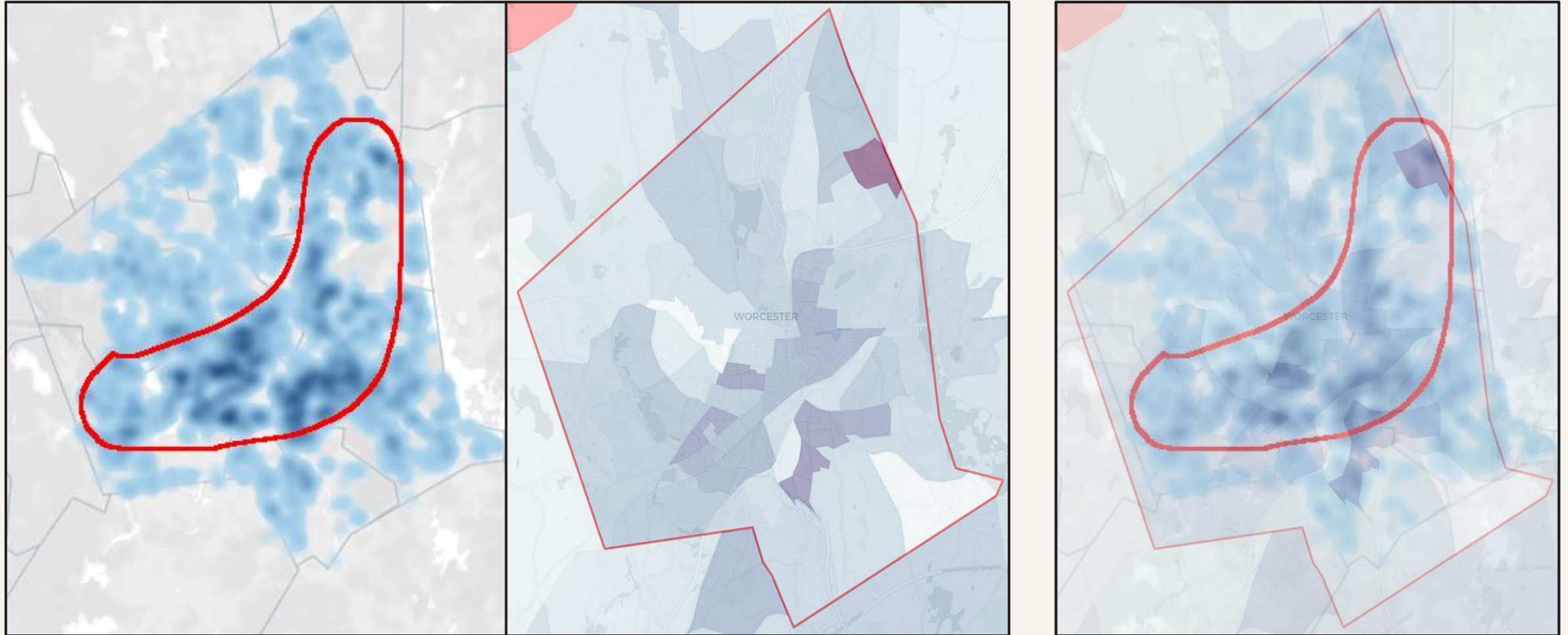
Population Density

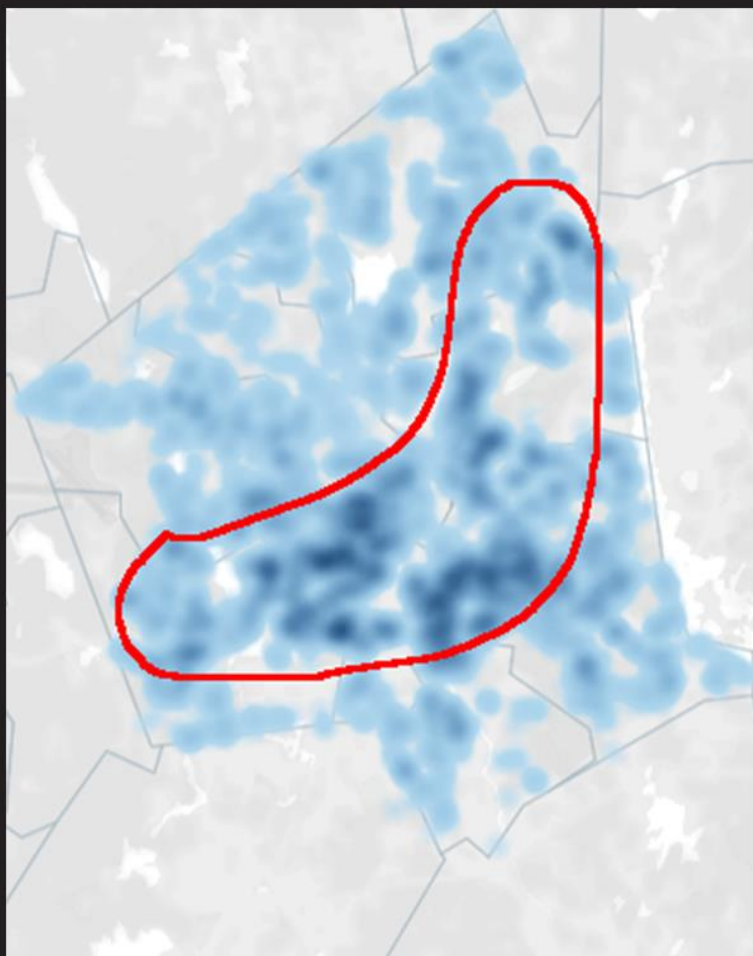


Usage of Public Transportation

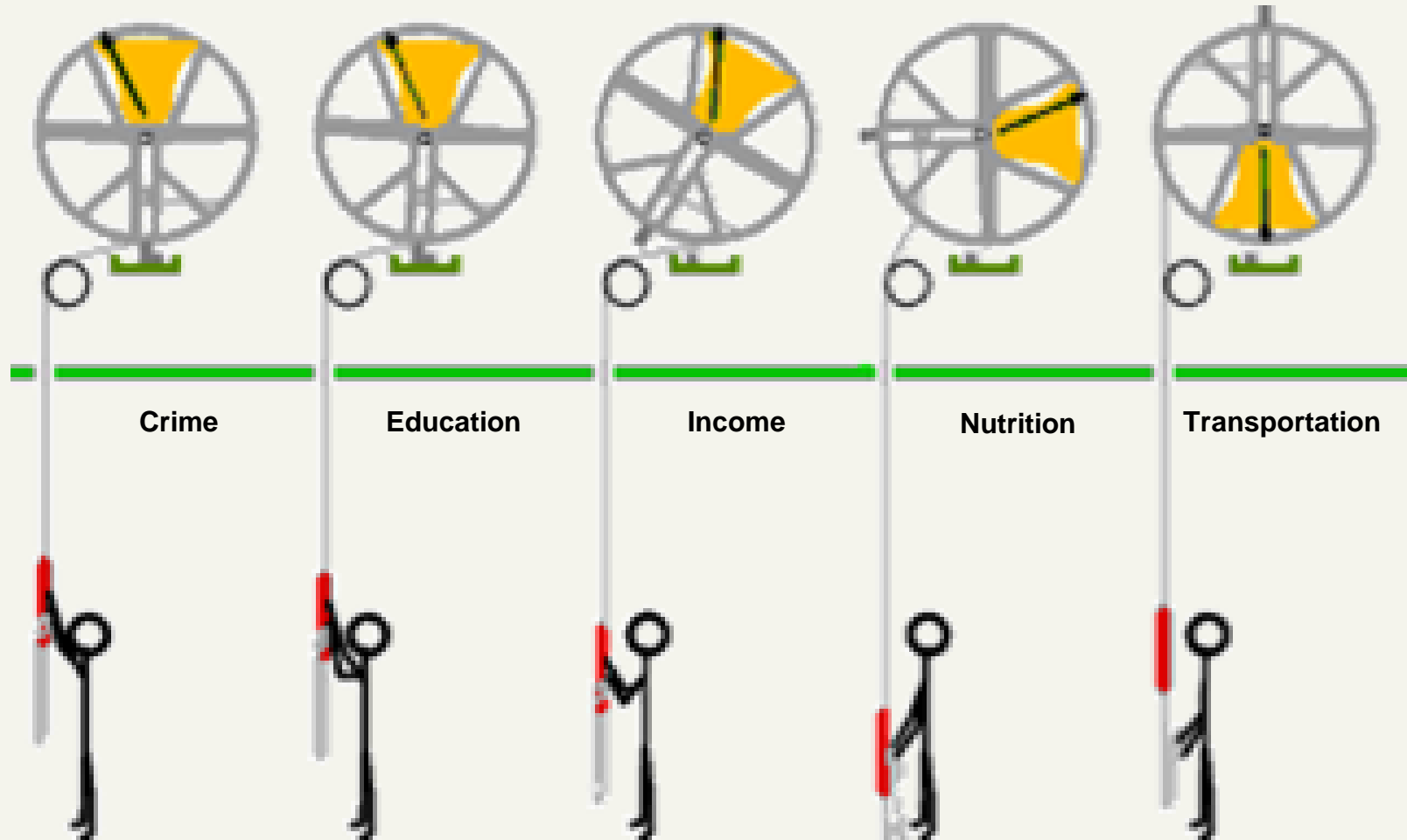


Unemployment Rate





Bell Ringers Model



Rhetoric is to Audience as Health & Medicine are to Social Factors

Writing about Disease and Public Health

Research Methods

Education Methods in Writing

Cross-Cultural Communication

Medical Writing



Teaching Writing

Thanks!

Questions?