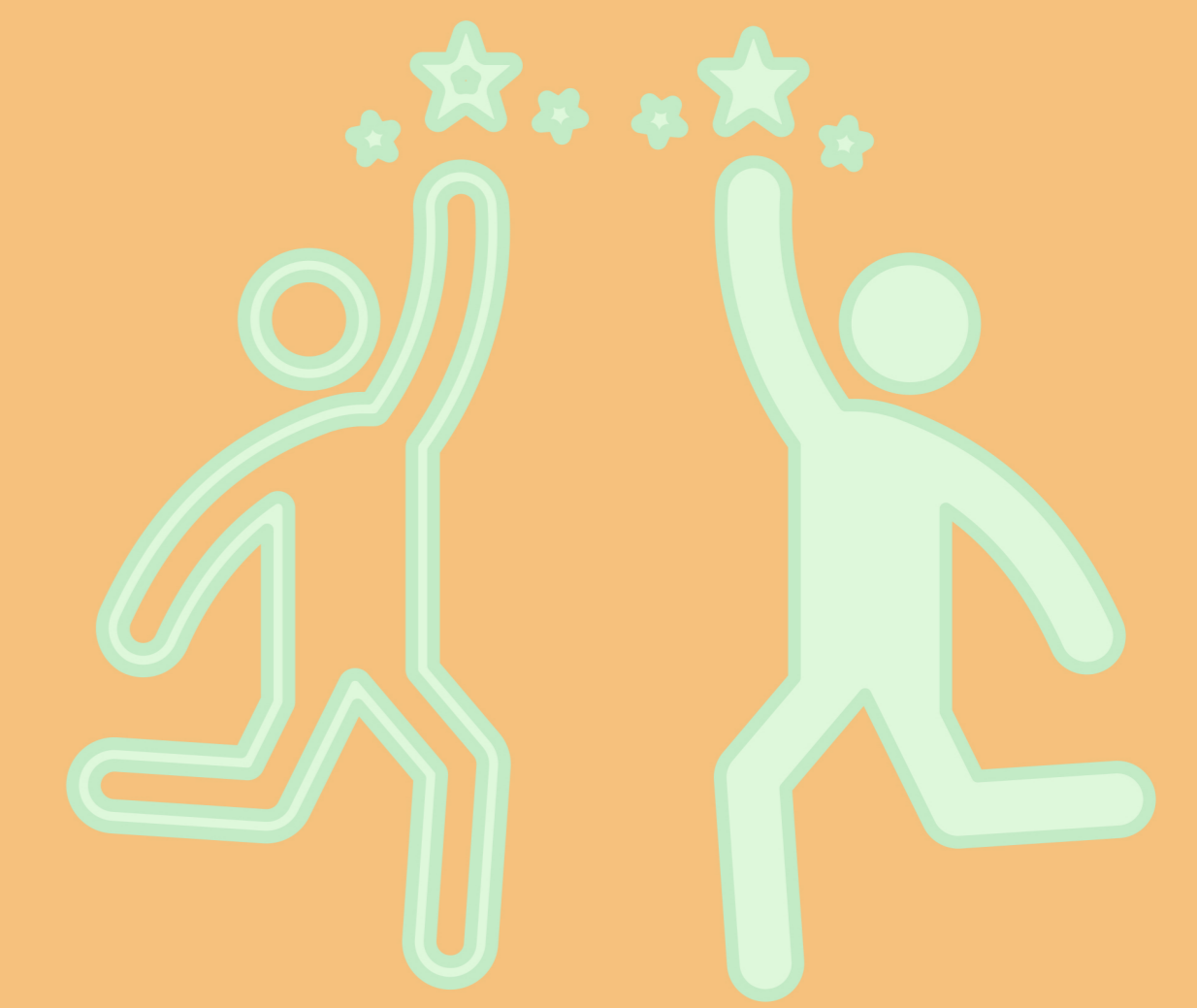




# Peer Into Success

Ella Dunne, Jake Olsen, and August Vitarbo

Professors J. Beck and R. Traver PLA: Emerald Pham



## Problem

WPI first year students struggle with academic self-confidence and efficacy. These affect academic success and overall wellbeing.

## Definitions

Self-confidence: One's trust in their abilities, qualities, and judgment

Efficacy: One's belief in being able to successfully execute a task to obtain a certain outcome

## Solution

Improve the Peer Learning Mentor program by developing guidelines that expand focus to self-confidence and efficacy.

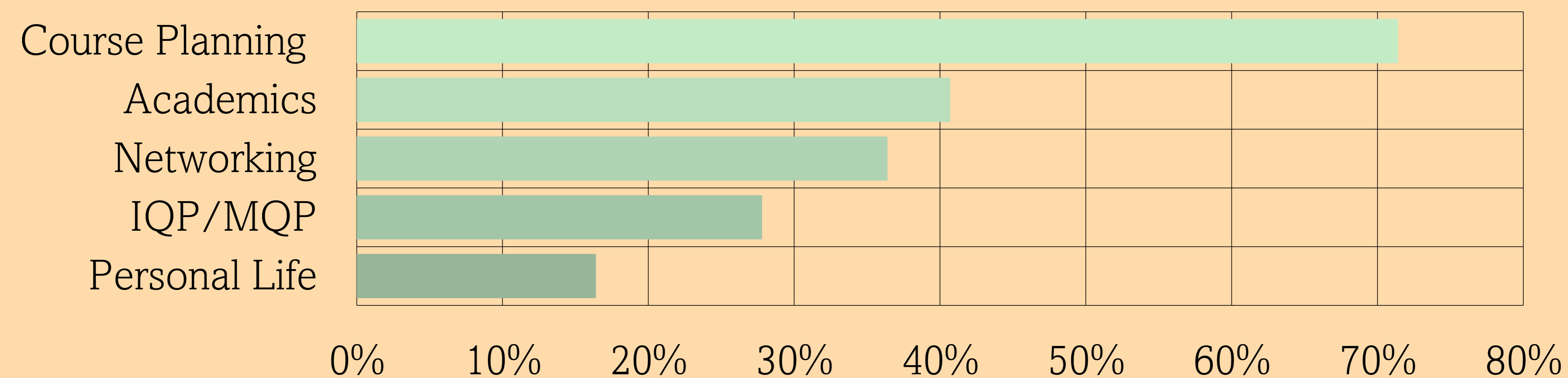
## Sources

Moses, J., & Escolas, J. (2002). *Ambition, confidence, focus and academic performance*. Worcester: Worcester Polytechnic Institute.  
Stupnisky, R.H., Renaud, R.D., Perry, R.P. *et al.* Comparing self-esteem and perceived control as predictors of first-year college students' academic achievement. *Soc Psychol Educ* 10, 303-330 (2007). <https://doi.org/10.1007/s11218-007-9020-4>  
Kim, S. C., Oliveri, D., Riingen, M., Taylor, B., & Rankin, L. (2013). Randomized controlled trial of graduate-to-undergraduate student mentoring program. *Journal of Professional Nursing*, 29(6), e43-e49.

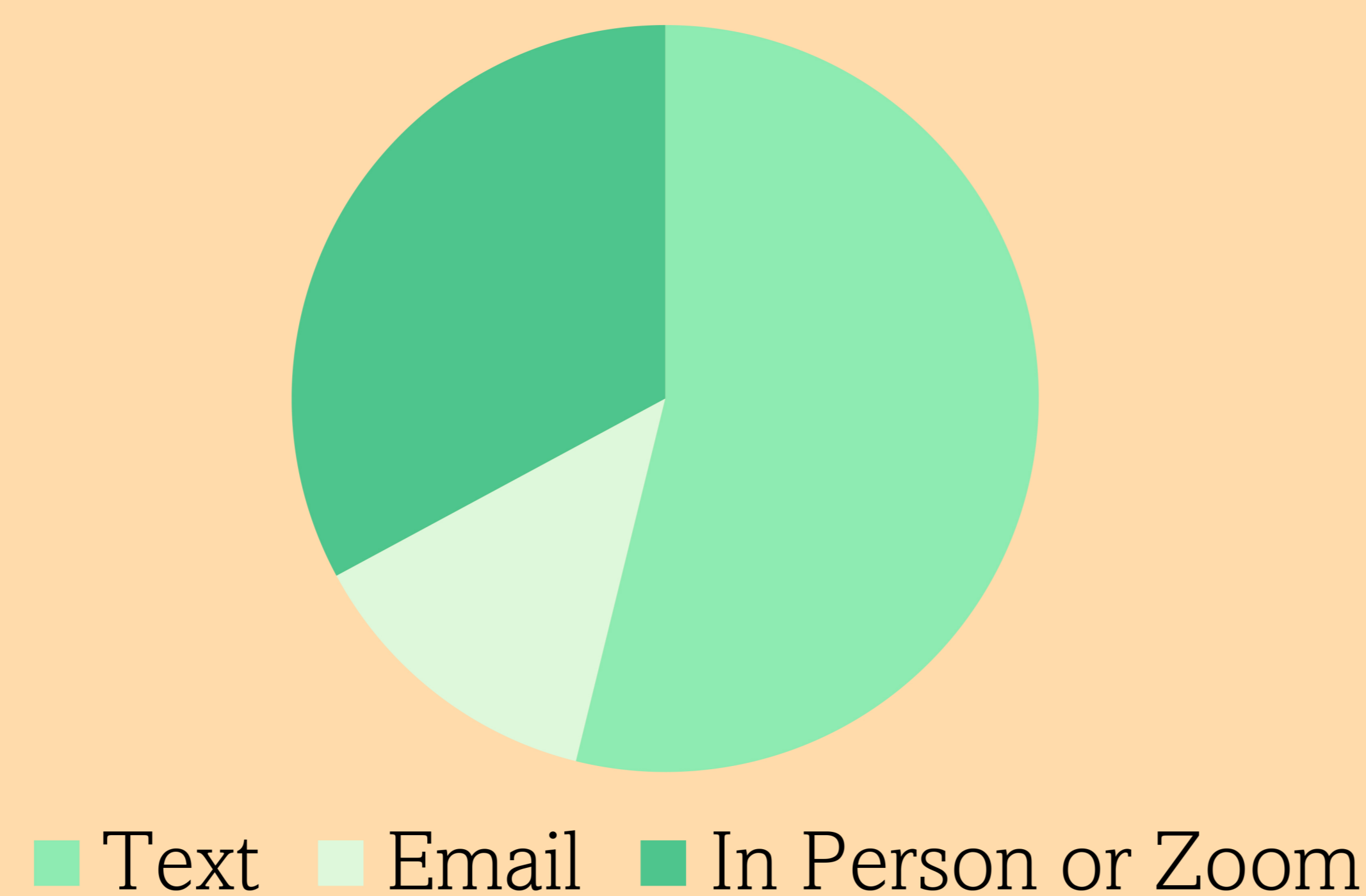
## Peer Learning Mentor Program

Connects underclassmen with upperclassmen in their major. Builds networking skills and prepares underclassmen for internships and jobs. Implemented in D term of the 2020-2021 academic year.

Percentage of Sessions where Topic was Discussed



How Sessions Occurred



### Lack of Guidelines

•"I'd appreciate if the mentors could be given some big-picture guidance on what topics to cover."

### Unstructured

•"Guidance on what pairings should look like."

### Mental Health

•Many mentors did not know how to appropriately respond to their mentee's mental health struggles.

## Conclusions

The revisions introduced to the PLM program have created more balanced and organized meetings. This will expand the scope of PLM to better address self-confidence and efficacy. This allows the program to contribute to improved academic success and overall wellbeing of first-years at WPI.

## Methodology

Analyze current self-confidence trends in WPI first-years

Improve guidelines for PLM program; list new topics for mentor coverage

Train mentors using new guidelines

Collect feedback from mentors and mentees

Compare data to measure success of new guidelines

## Acknowledgements

Paul Reilly (Dean of Undergraduate Success), Eva Bruklisch, Erin Gowaski, PLM Mentors and Mentees