

ATTACK PATH-1 DESCRIPTION

NUMBER	DESCRIPTION	D, ft
111	Front door, locked, glass	1
112	Lobby	35
113	Corridor	130
114	Stairway door, unlocked, metal	1
115	Stairway	48
141	Hose use begins	0
142	Corridor door, locked, metal	1
143	SCBA use begins	1
144	Corridor	15
145	Suite door, locked, glass	1
146	Hallway	30
147	Office door, open, wood	1

Table 7

ATTACK PATH-2 DESCRIPTION

NUMBER	DESCRIPTION	D, ft
211	Front door, locked, glass	1
212	Lobby	45
213	Stairway door, unlocked, metal	1
214	Stairway	48
241	Hose use begins	0
242	Corridor door, locked, metal	1
243	Corridor	10
244	Turn	0
245	SCBA use begins	1
246	Corridor	125
247	Suite door, locked, glass	1
248	Turn	0
249	Hallway	30
24A	Office door, open, wood	1

Table 8

ATTACK PATH-3 DESCRIPTION

NUMBER	DESCRIPTION	D, ft
311	Front door, locked, glass	1
312	Lobby	45
313	Corridor	130
314	Stairway door, unlocked, metal	1
315	Stairway	48
341	Hose use begins	0
342	Corridor door, locked, metal	1
343	Corridor	125
344	SCBA use begins	0
345	Corridor	125
346	Suite door, locked, glass	1
347	Turn	0
348	Hallway	30
349	Office door, open, wood	1

Table 9

EVALUATION PATH-1

EVALUATION INPUT

DESCRIPTION	#	D	E hs	M
FRONT DOOR	111	1	0 N	1
LOBBY	112	45	0 N	0
CORRIDOR	113	130	0 N	0
STAIRWAY DOOR	114	1	0 N	0
STAIRWAY	115	48	0 N	0
HOSE	141	0	0 D	1
CORRIDOR DOOR	142	1	0 D	1
SCBA	143	1	2 D	0
CORRIDOR	144	15	4 D	0
SUITE DOOR	145	1	8 C	1
HALLWAY	146	30	8 C	0
OFFICE DOOR	147	1	10 C	0

EVALUATION OUTPUT

DESCRIPTION	#	D	A	T	H	R	DAT	DAT + H (DAT + H)R	
FRONT DOOR	111	1	75.0	1.0	0.0	1.0	75.0	75.0	75.0
LOBBY	112	45	1.1	1.0	0.0	1.0	49.5	49.5	49.5
CORRIDOR	113	130	1.0	1.0	0.0	1.0	130.0	130.0	130.0
STAIRWAY DOOR	114	1	20.0	1.0	0.0	1.0	20.0	20.0	20.0
STAIRWAY	115	48	4.4	1.0	0.0	1.0	209.0	209.0	209.0
HOSE	141	0	0.0	1.0	300.0	1.0	0.0	300.0	300.0
CORRIDOR DOOR	142	1	200.0	1.0	0.1	1.0	200.0	200.1	200.1
SCBA	143	1	1.0	100.0	0.1	1.0	100.0	100.1	100.1
CORRIDOR	144	15	0.0	1.6	1.6	1.0	0.0	1.6	1.6
SUITE DOOR	145	1	75.0	2.4	0.2	1.0	183.7	183.9	183.9
HALLWAY	146	30	1.0	2.4	7.0	1.0	73.5	80.5	80.5
OFFICE DOOR	147	1	1.0	3.1	0.3	1.0	3.1	3.4	3.4
							0.0	0.0	0.0
							0.0	0.0	0.0

SUM D = 274

SUM De = 1353.0674

Pd = 4.9

Table 10

EVALUATION PATH-2

EVALUATION INPUT

DESCRIPTION	#	D	E hs	M
FRONT DOOR	211	1	0 N	1
LOBBY	212	45	0 N	0
STAIRWAY DOOR	213	1	0 N	0
STAIRWAY	214	48	0 N	0
HOSE	241	0	0 D	1
CORRIDOR DOOR	242	1	0 D	1
CORRIDOR	243	10	2 D	0
TURN	244	0	0 D	0
SCBA	245	1	2 D	0
CORRIDOR	246	125	4 D	1
SUITE DOOR	247	1	4 C	1
TURN	248	0	8 C	0
HALLWAY	249	30	8 C	0
OFFICE DOOR	24A	1	10 C	0

EVALUATION OUTPUT

DESCRIPTION	#	D	A	T	H	R	DAT	DAT + H (DAT + H)R	
FRONT DOOR	211	1	75.0	1.0	0.0	1.0	75.0	75.0	75.0
LOBBY	212	45	1.1	1.0	0.0	1.0	49.5	49.5	49.5
STAIRWAY DOOR	213	1	20.0	1.0	0.0	1.0	20.0	20.0	20.0
STAIRWAY	214	48	4.4	1.0	0.0	1.0	209.0	209.0	209.0
HOSE	241	0	0.0	1.0	300.0	1.0	0.0	300.0	300.0
CORRIDOR DOOR	242	1	200.0	1.0	0.1	1.0	200.0	200.1	200.1
CORRIDOR	243	10	1.0	1.3	1.0	1.0	12.5	13.5	13.5
TURN	244	0	0.0	1.0	9.1	1.0	0.0	9.1	9.1
SCBA	245	1	1.0	100.0	0.3	1.0	100.0	100.3	100.3
CORRIDOR	246	125	1.0	1.6	134.9	1.0	195.6	330.5	330.5
SUITE DOOR	247	1	75.0	1.6	4.4	1.5	117.4	121.8	182.7
TURN	248	0	0.0	2.4	373.3	1.5	0.0	373.3	560.0
HALLWAY	249	30	1.0	2.4	469.5	1.5	73.5	543.0	814.4
OFFICE DOOR	24A	1	1.0	3.1	20.8	1.5	3.1	23.8	35.7

SUM D = 264

SUM De = 2899.8437

Pd = 11.0

Table 11

EVALUATION PATH- 3

=====

EVALUATION INPUT

DESCRIPTION	#	D	E	hs	M
	311	1	0	N	1
LOBBY	312	45	0	N	0
CORRIDOR	313	130	0	N	0
STAIRWAY DOOR	314	1	0	N	0
STAIRWAY	315	48	0	N	0
HOSE	341	0	0	D	1
CORRIDOR DOOR	342	1	0	D	1
CORRIDOR	343	125	0	D	0
SCBA	344	1	2	D	0
CORRIDOR	345	125	4	D	1
SUITE DOOR	346	1	8	C	1
TURN	347	0	0	C	0
HALLWAY	348	30	8	C	0
OFFICE DOOR	349	1	10	C	0

=====

EVALUATION OUTPUT

DESCRIPTION	#	D	A	T	H	R	DAT	DAT + H	(DAT + H)R
FRONT DOOR	311	1	75.0	1.0	0.0	1.0	75.0	75.0	75.0
LOBBY	312	45	1.1	1.0	0.0	1.0	49.5	49.5	49.5
CORRIDOR	313	130	1.0	1.0	0.0	1.0	130.0	130.0	130.0
STAIRWAY DOOR	314	1	20.0	1.0	0.0	1.0	20.0	20.0	20.0
STAIRWAY	315	48	4.4	1.0	0.0	1.0	209.0	209.0	209.0
HOSE	341	0	0.0	1.0	300.0	1.0	0.0	300.0	300.0
CORRIDOR DOOR	342	1	200.0	1.0	0.1	1.0	200.0	200.1	200.1
CORRIDOR	343	125	1.0	1.0	44.4	1.0	125.0	169.4	169.4
SCBA	344	1	1.0	100.0	0.9	1.0	100.0	100.9	100.9
CORRIDOR	345	125	1.0	1.6	440.3	1.0	195.6	635.9	635.9
SUITE DOOR	346	1	75.0	2.4	15.3	1.5	183.7	199.0	298.5
TURN	347	0	0.0	1.0	1292.1	1.5	0.0	1292.1	1938.1
HALLWAY	348	30	1.0	2.4	1624.7	1.5	73.5	1698.2	2547.3
OFFICE DOOR	349	1	1.0	3.1	71.8	1.5	3.1	74.9	112.3

SUM D = 509

SUM De = 6786.1375

Pd = 13.3

Table 12

EVALUATION PATH-2.ALT

EVALUATION INPUT

DESCRIPTION	#	D	E hs	M
FRONT DOOR	211	1	0 N	1
LOBBY	212	45	0 N	0
STAIRWAY DOOR	213	1	0 N	0
STAIRWAY	214	48	0 N	0
HOSE	241	0	0 D	1
CORRIDOR DOOR	242	1	0 D	1
SCBA	243	1	2 D	0
CORRIDOR	244	125	4 D	1
CORRIDOR DOOR	245	1	4 C	1
TURN	246	0	8 C	0
HALLWAY	247	30	8 C	0
OFFICE DOOR	248	1	10 C	0

EVALUATION OUTPUT

DESCRIPTION	#	D	A	T	H	R	DAT	DAT + H (DAT + H)R
FRONT DOOR	211	1	75.0	1.0	0.0	1.0	75.0	75.0
LOBBY	212	45	1.1	1.0	0.0	1.0	49.5	49.5
STAIRWAY DOOR	213	1	20.0	1.0	0.0	1.0	20.0	20.0
STAIRWAY	214	48	4.4	1.0	0.0	1.0	209.0	209.0
HOSE	241	0	0.0	1.0	300.0	1.0	0.0	300.0
CORRIDOR DOOR	242	1	200.0	1.0	0.1	1.0	200.0	200.1
SCBA	243	1	1.0	100.0	0.1	1.0	100.0	100.1
CORRIDOR	244	125	1.0	1.6	45.3	1.0	195.6	240.9
CORRIDOR DOOR	245	1	75.0	1.6	1.4	1.5	117.4	178.2
TURN	246	0	0.0	2.4	118.7	1.5	0.0	178.0
HALLWAY	247	30	1.0	2.4	149.2	1.5	73.5	334.1
OFFICE DOOR	248	1	1.0	3.1	6.6	1.5	3.1	14.5
							0.0	0.0
							0.0	0.0

SUM D = 254

SUM De = 1899.3713

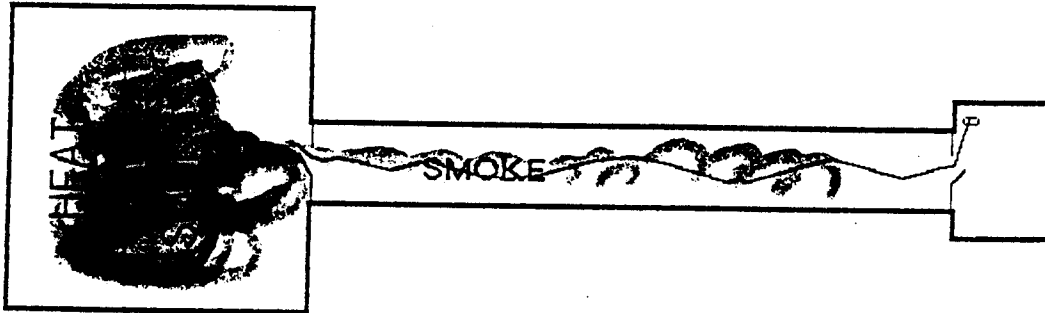
Pd = 7.5

Table 13

A P P E N D I X B

CORRIDOR-ROOM EXAMPLE

ATTACK-1



ATTACK-2

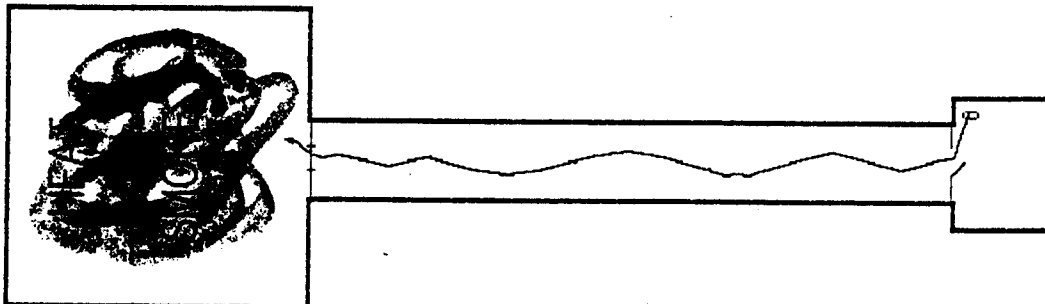


Figure 1

B1

BFSEM MANUAL SUPPRESSION NETWORK DIAGRAM

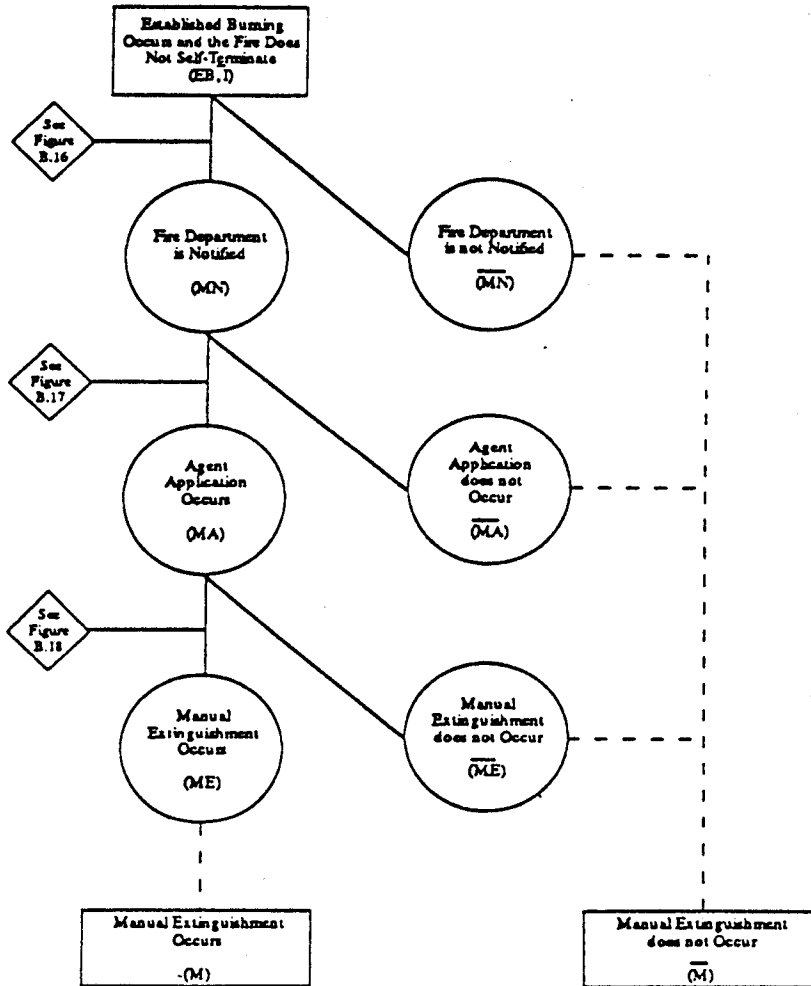
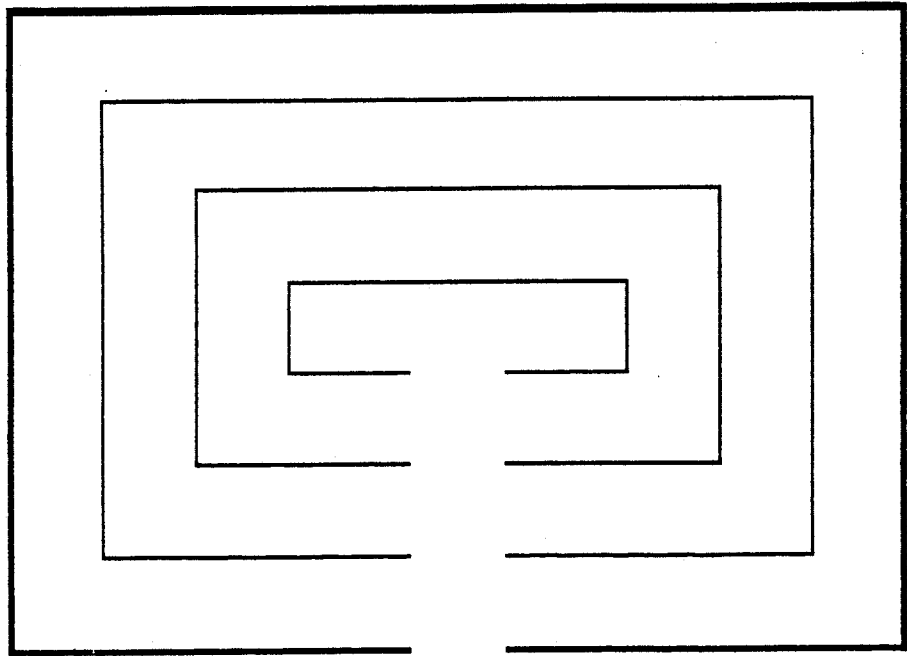


Figure 2

BUILDING DESIGN OPTIONS

ATTACK-1



ATTACK-2

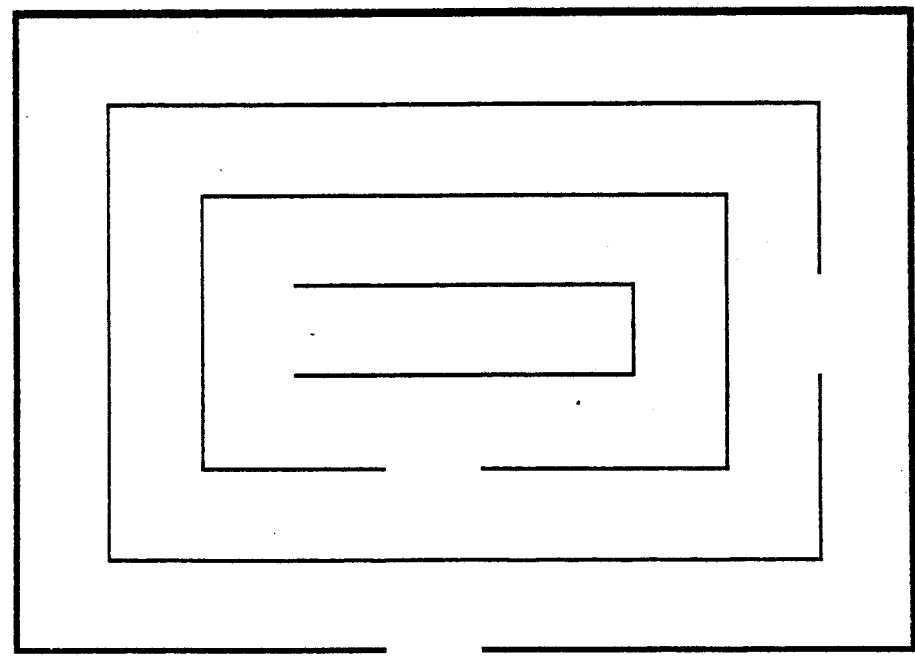


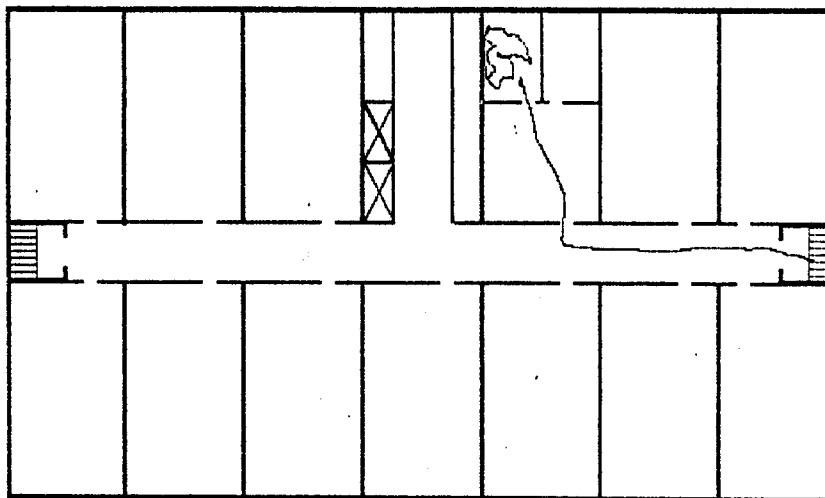
Figure 3
B3

FIRE DEPARTMENT & SPACE - BARRIER
MATRIX

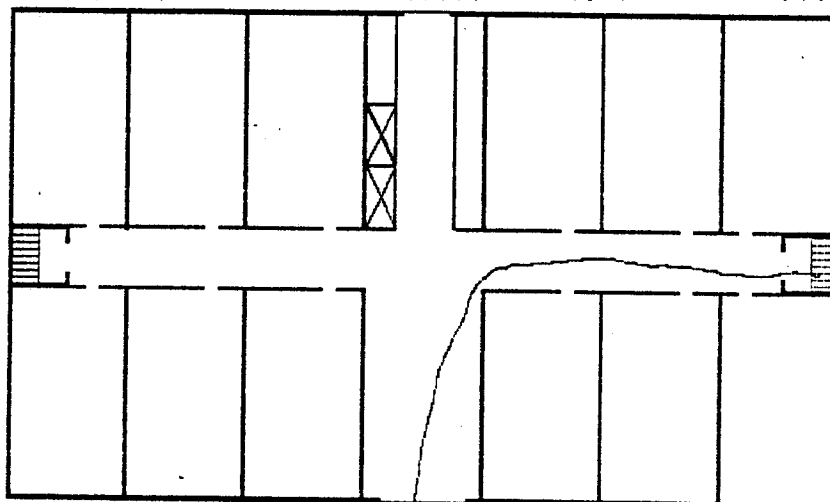
	R O O M	C O R R I D O R	S H A F T
FIRE			
ATTACK PATH			
EXPOSURE			

Figure 4

EXAMPLE BUILDING PLAN



4TH-FLOOR



1ST-FLOOR

Figure 5

ATTACK PATH, ENVIRONMENT, HOSE STATUS--DISPLAY LINE PLOT

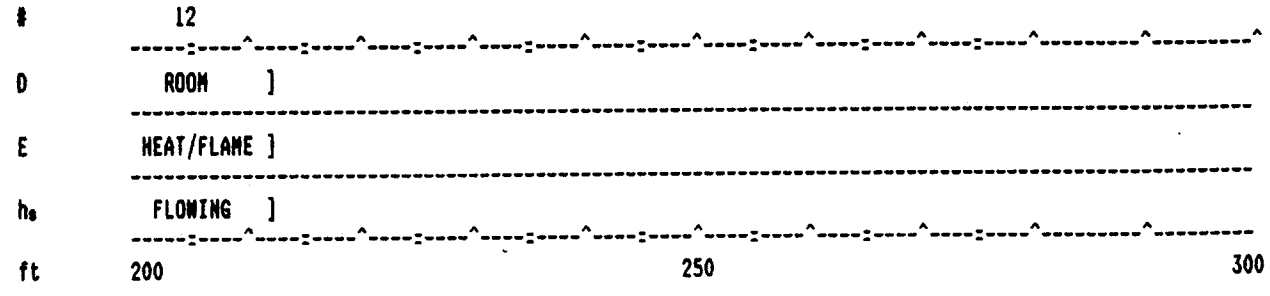
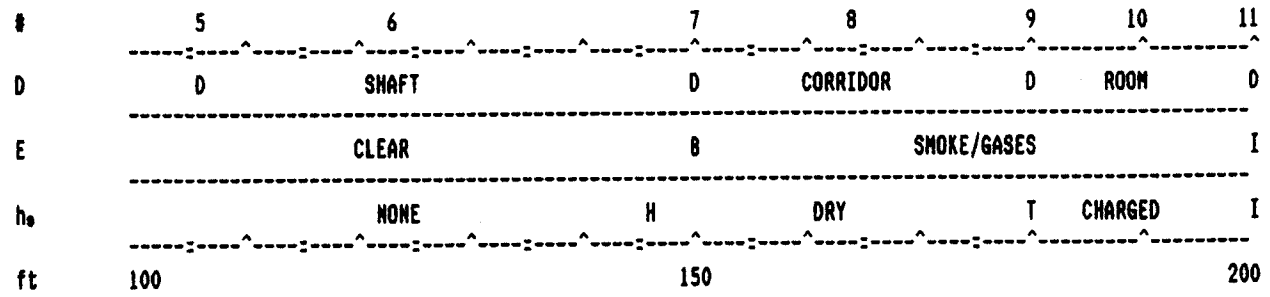
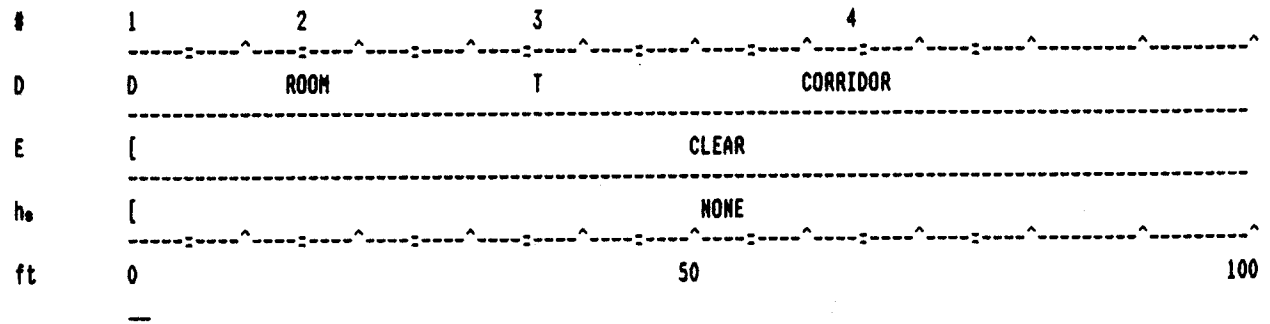


Figure 6

STAIRWAY MULTIPLIER

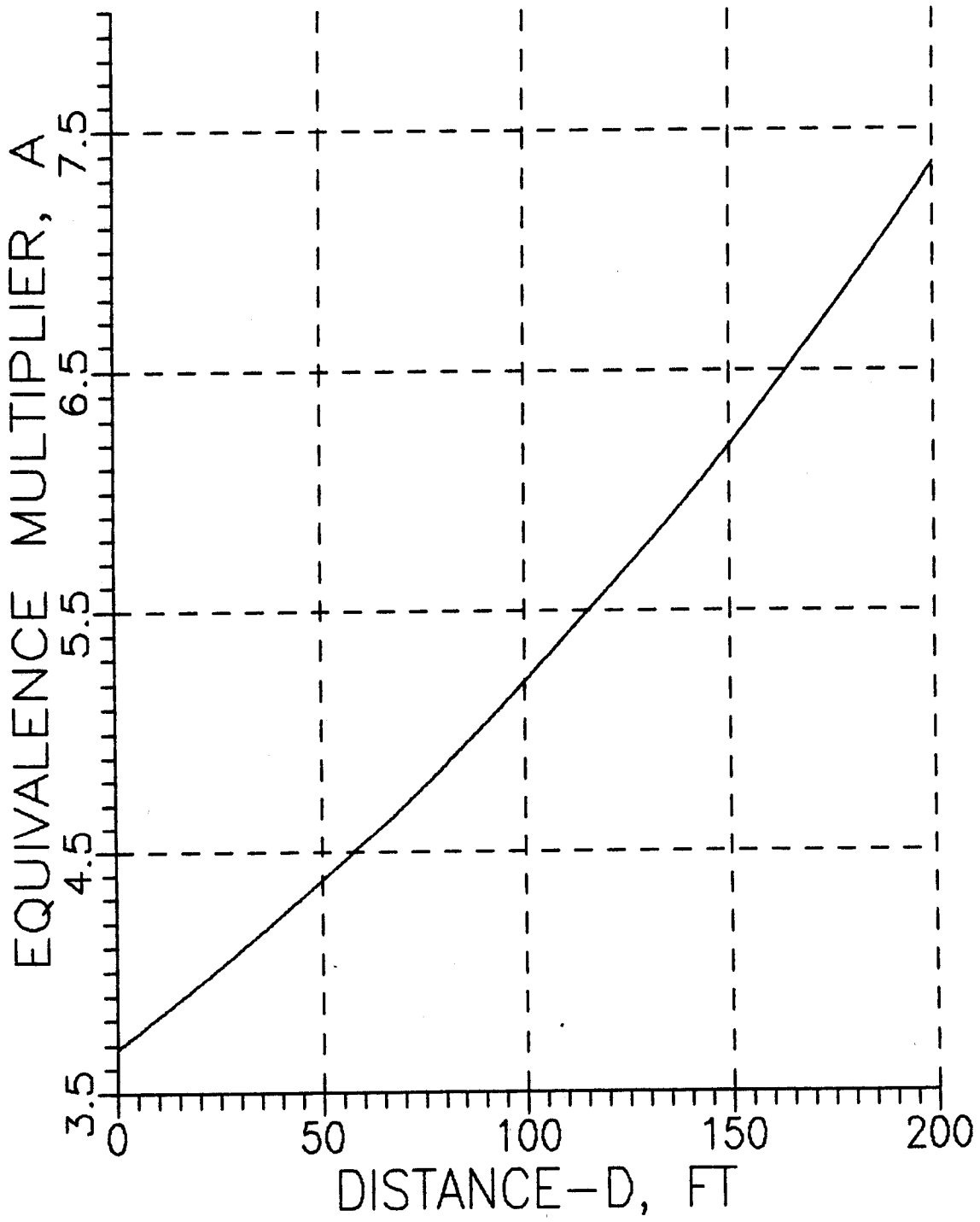


Figure 7

ELEVATOR MULTIPLIER

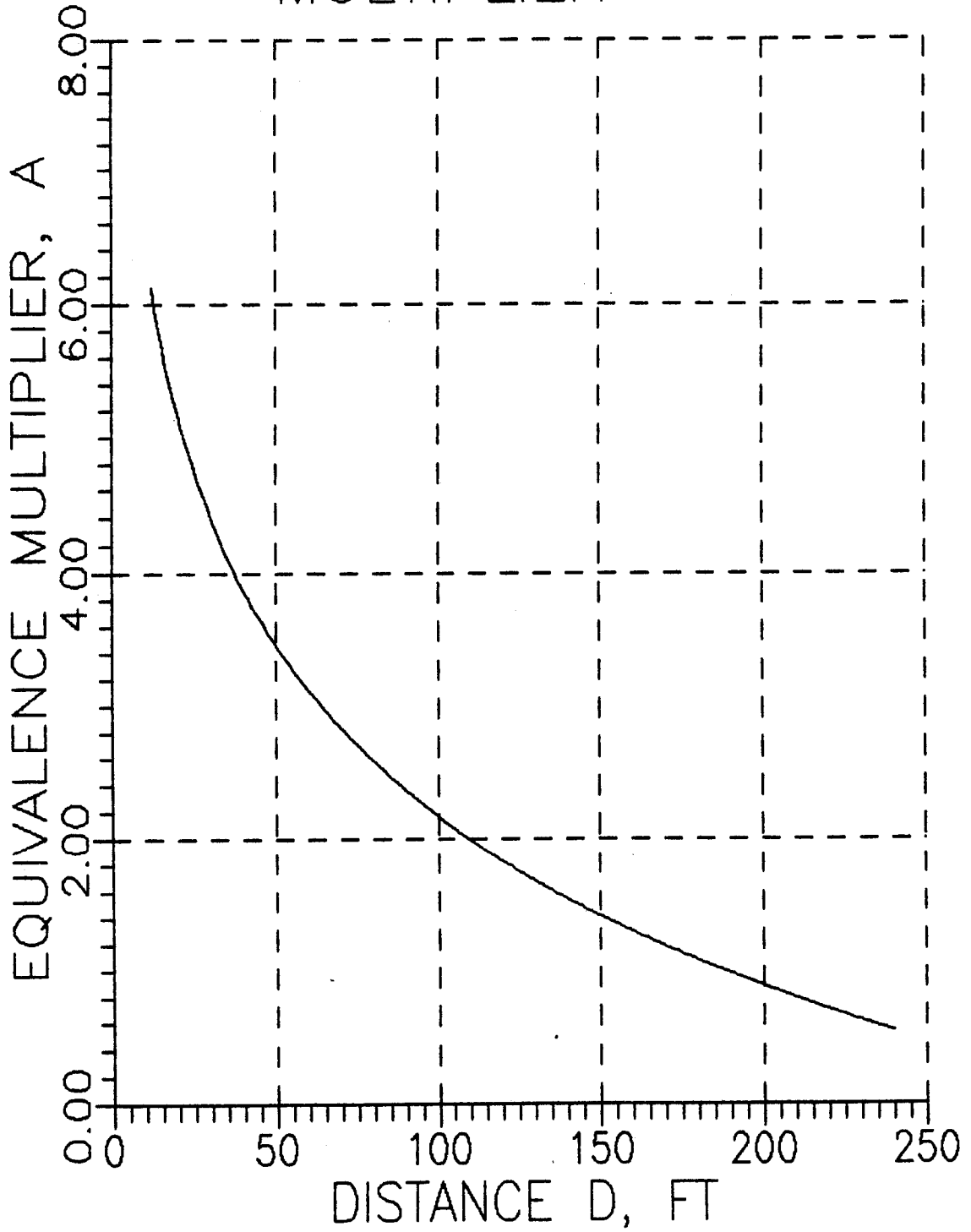


Figure 8

TENABILITY MULTIPLIER

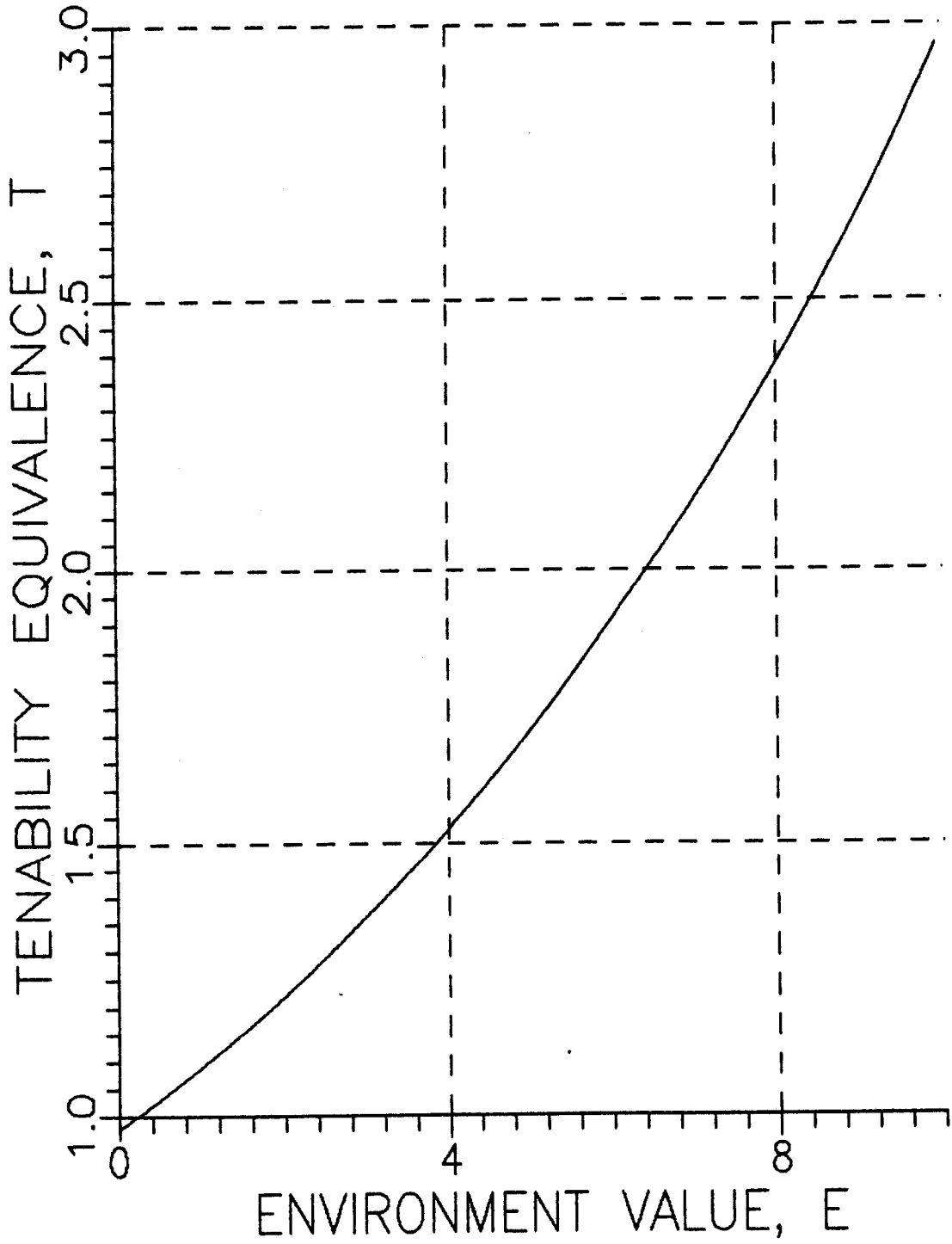


Figure 9

HOSE LINE EQUIVALENT 1 3/4 INCH-DRY

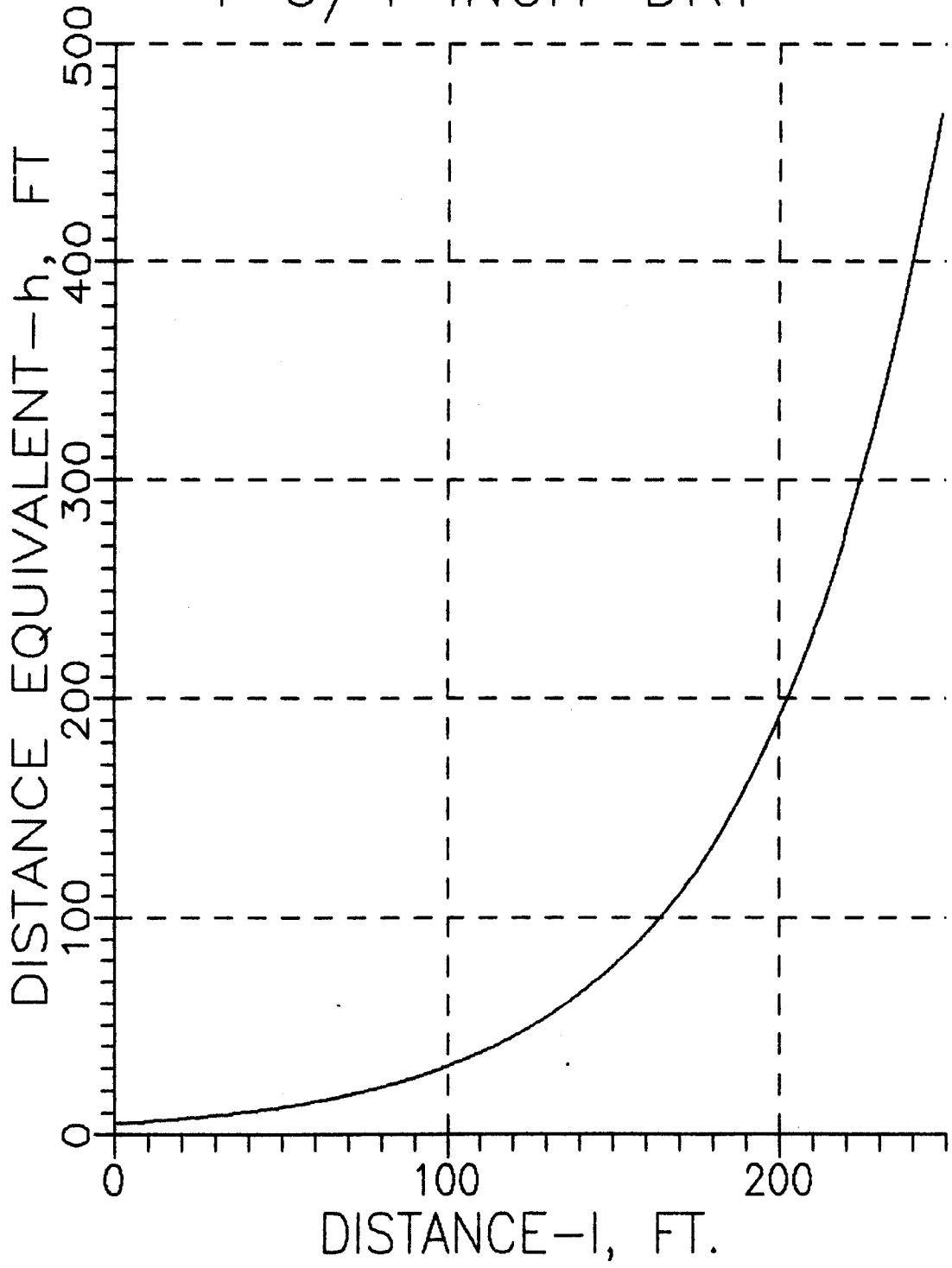


Figure 10

HOSE LINE EQUIVALENT 1 3/4 INCH-CHARGED

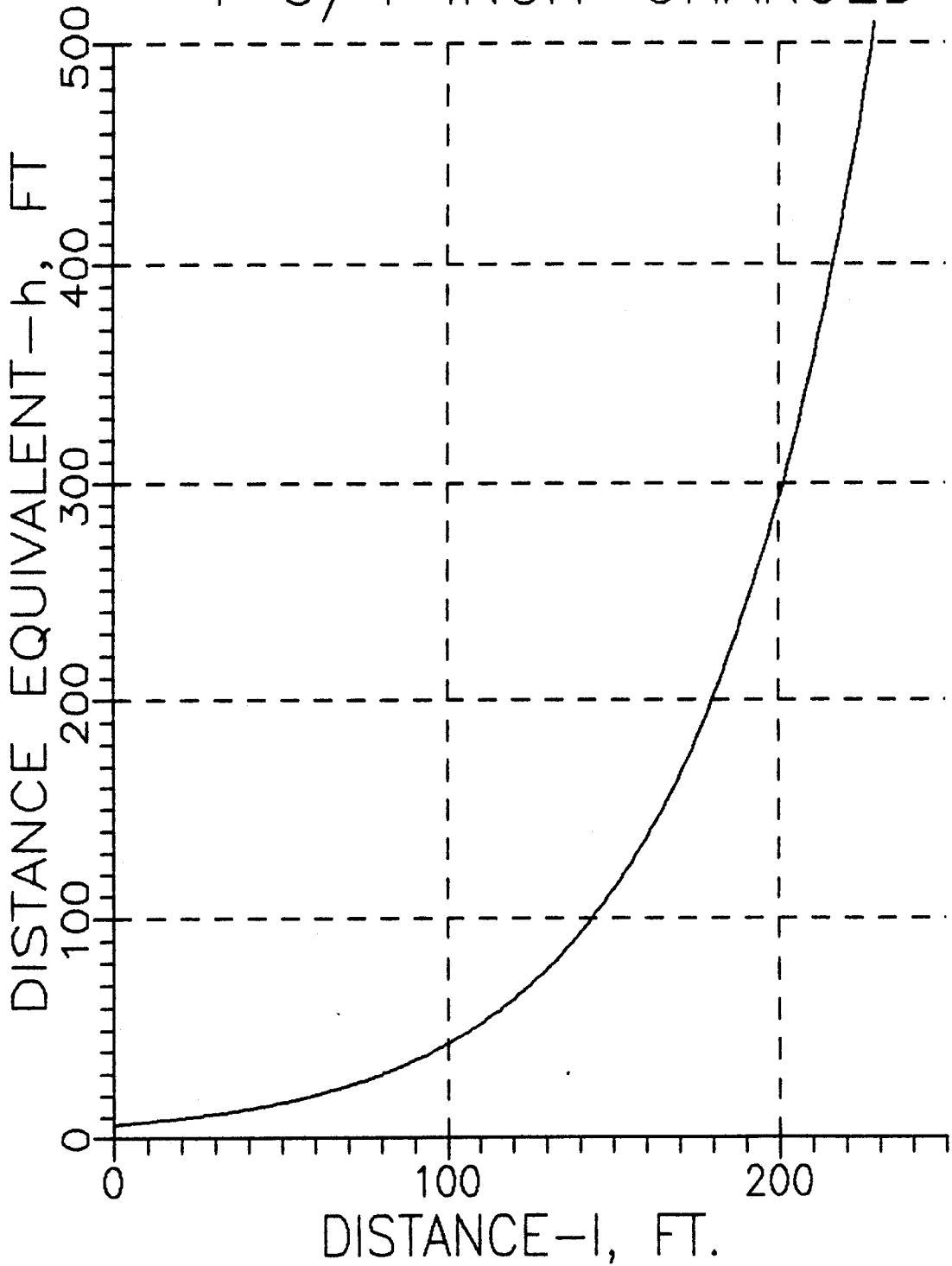


Figure 11

HOSE LINE EQUIVALENT 1 3/4 INCH—FLOWING

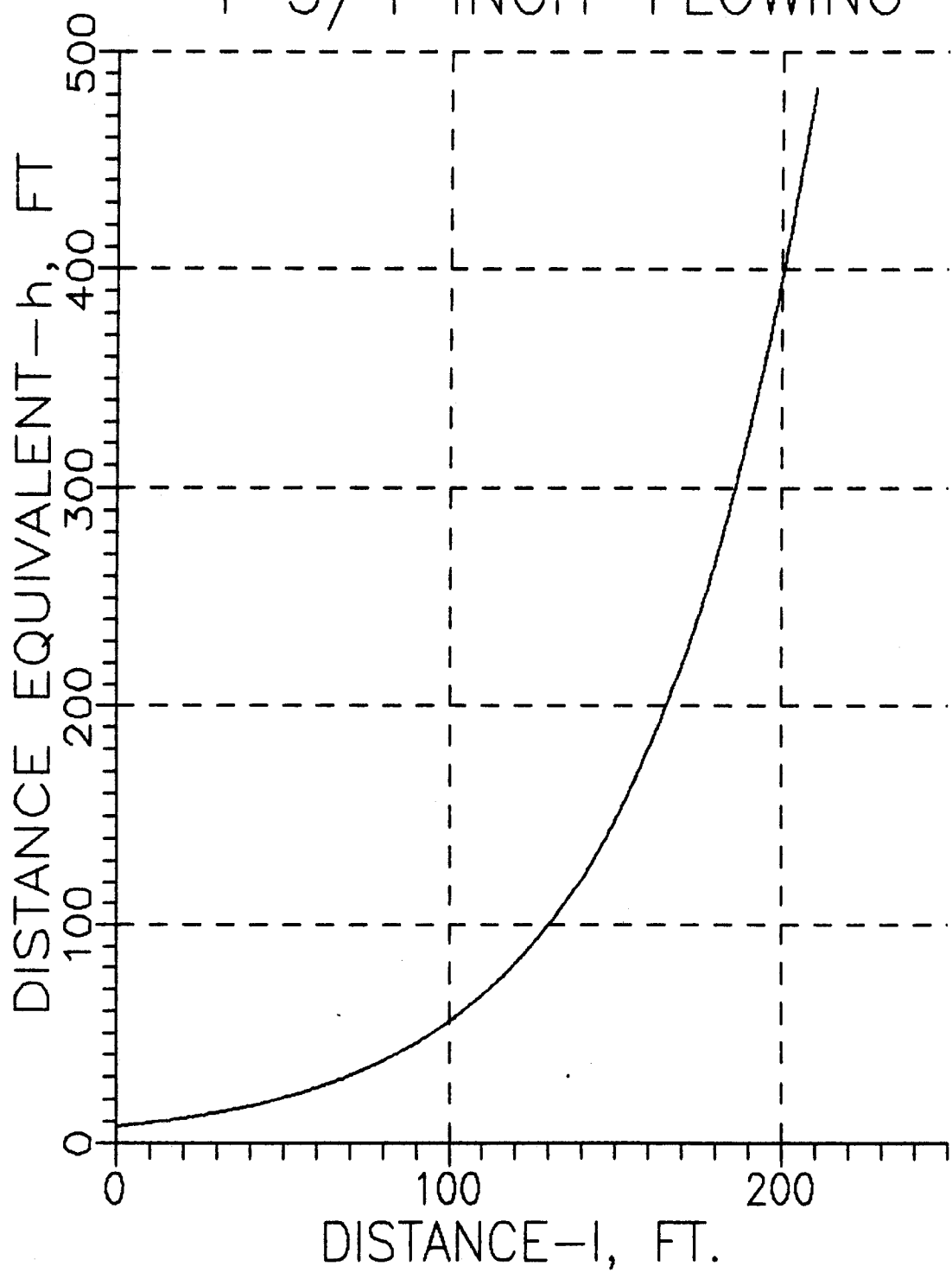


Figure 12

RESOURCE MULTIPLIER

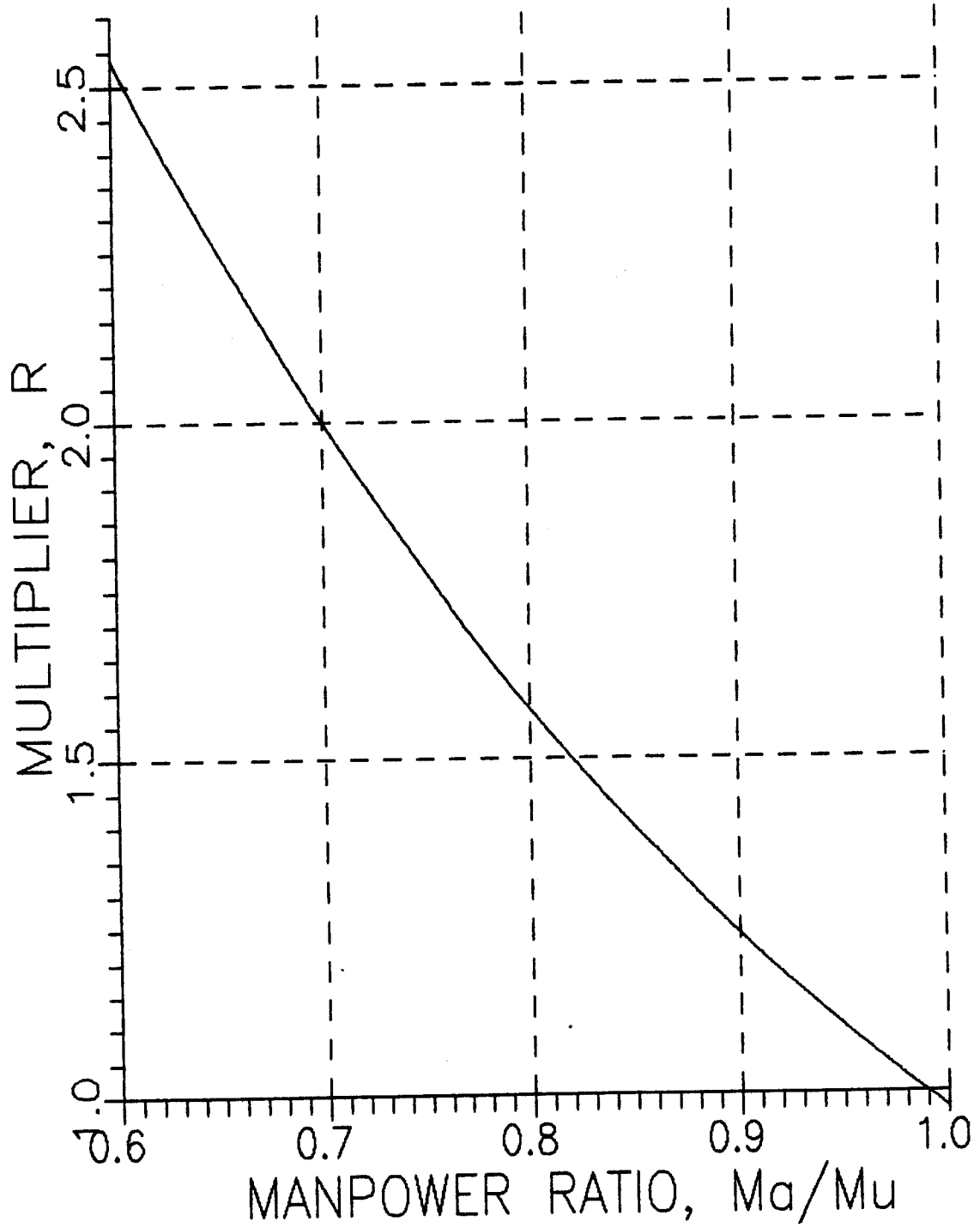


Figure 13

EXAMPLE LOBBY FLOOR PLAN

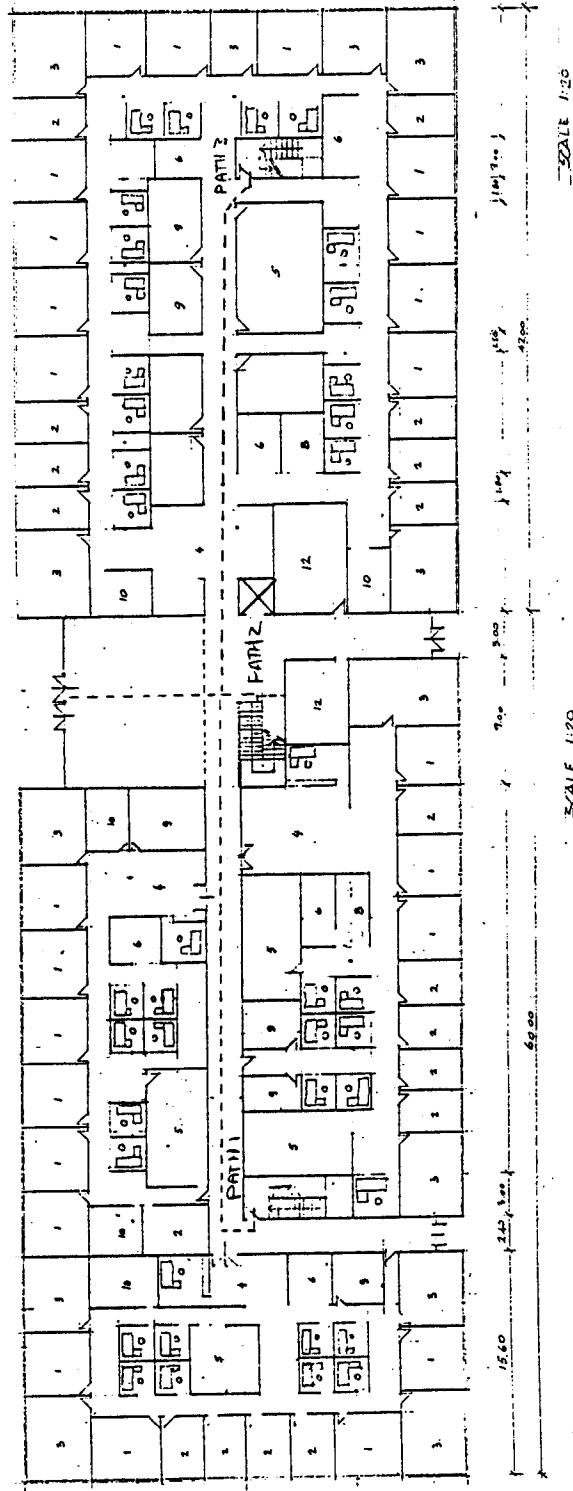


Figure 14

B14

EXAMPLE FOURTH FLOOR PLAN

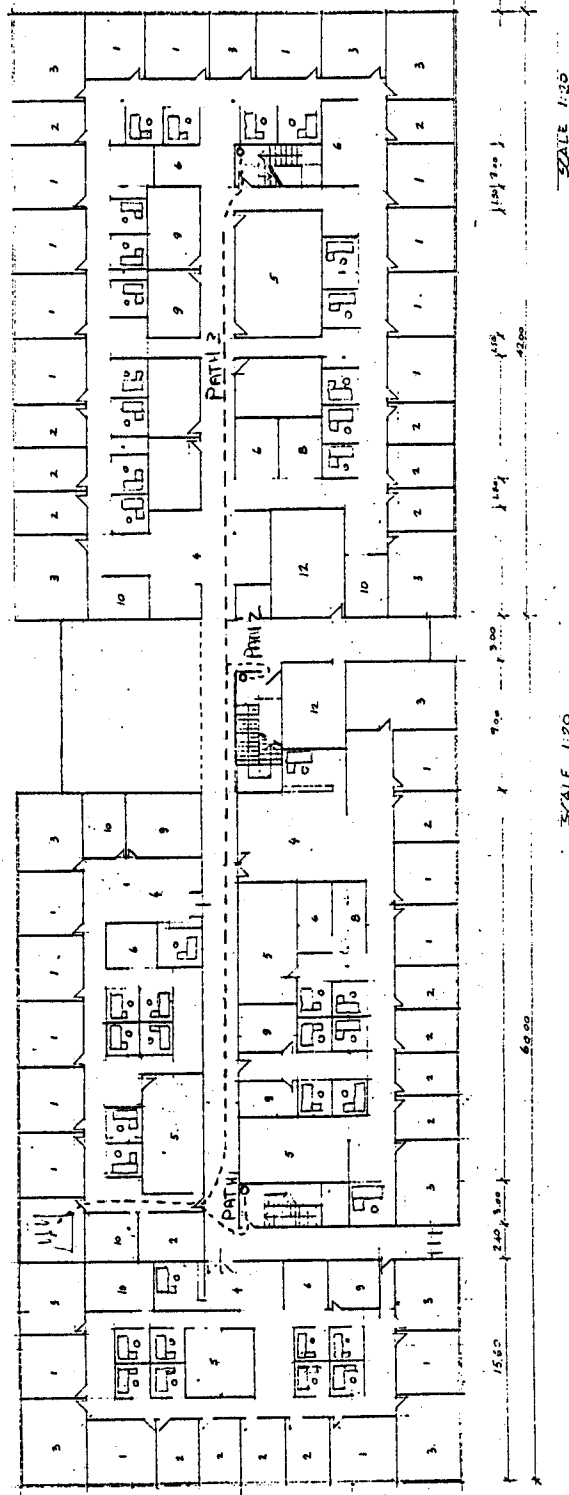


Figure 15

B15

ATTACK PATH, ENVIRONMENT, HOSE STATUS--DISTANCE LINE PLOT

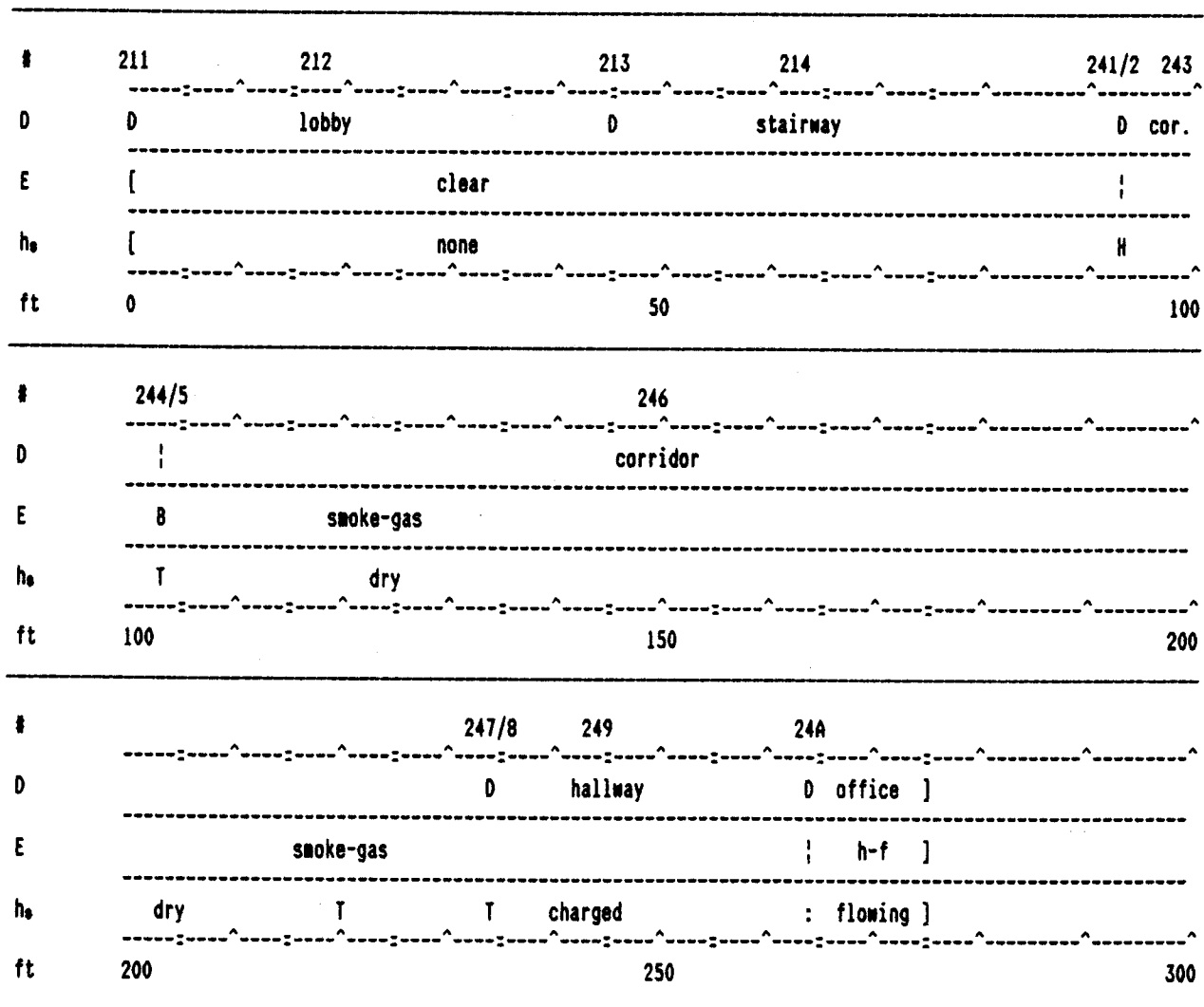


Figure 16

EFFECTIVE DISTANCE

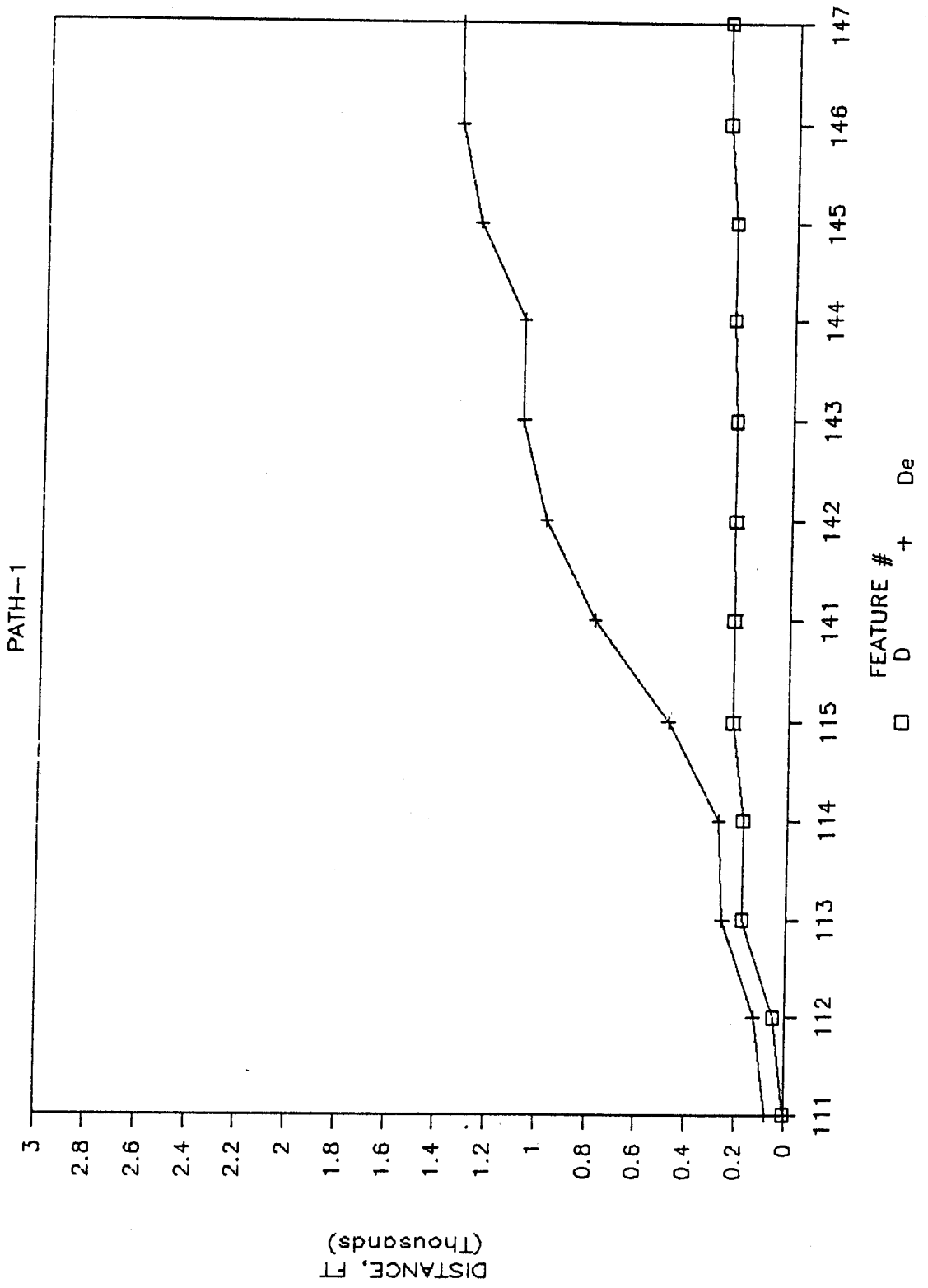


Figure 17

B17

EFFECTIVE DISTANCE

PATH-2

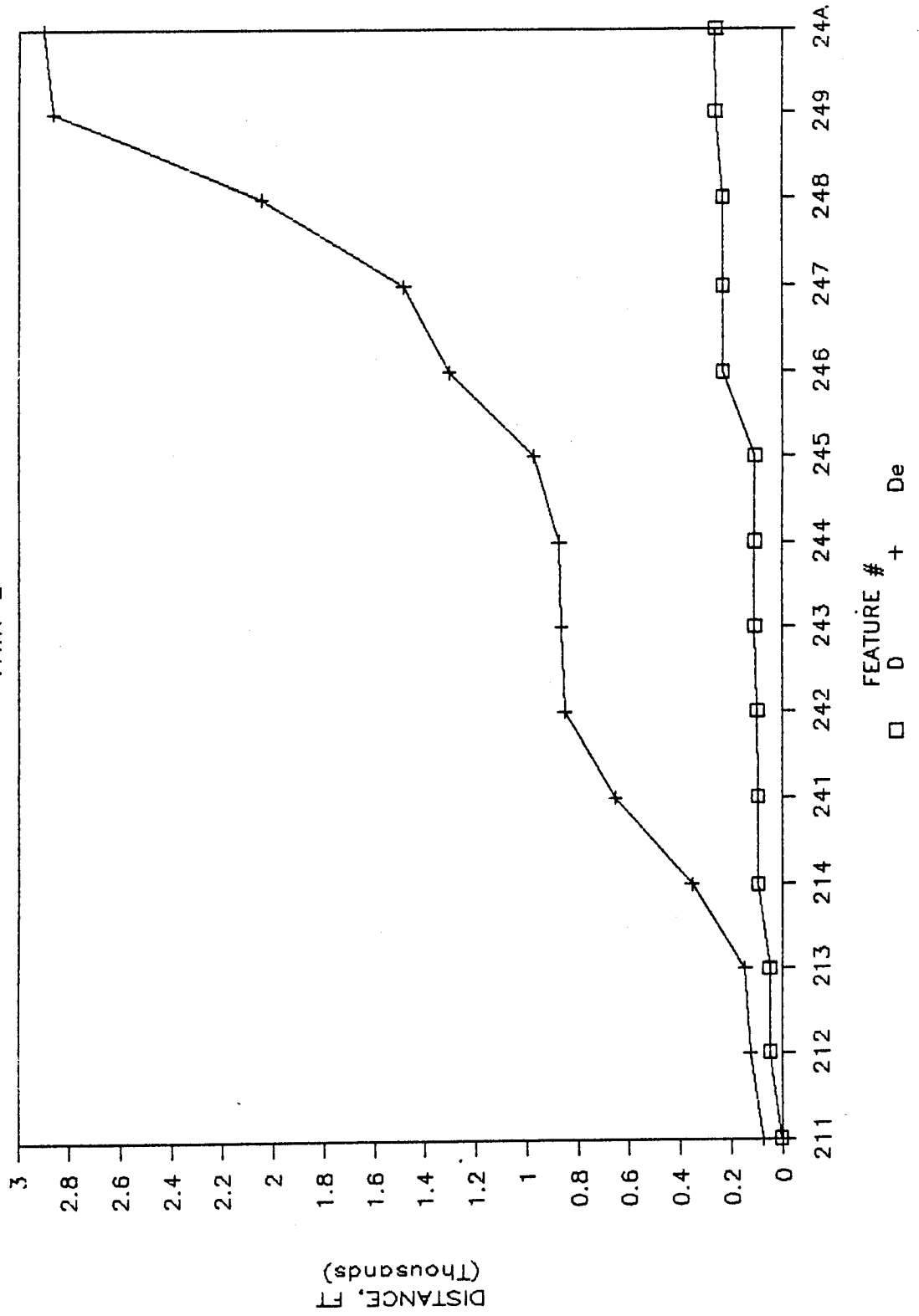


Figure 18

EFFECTIVE DISTANCE

PATH-3

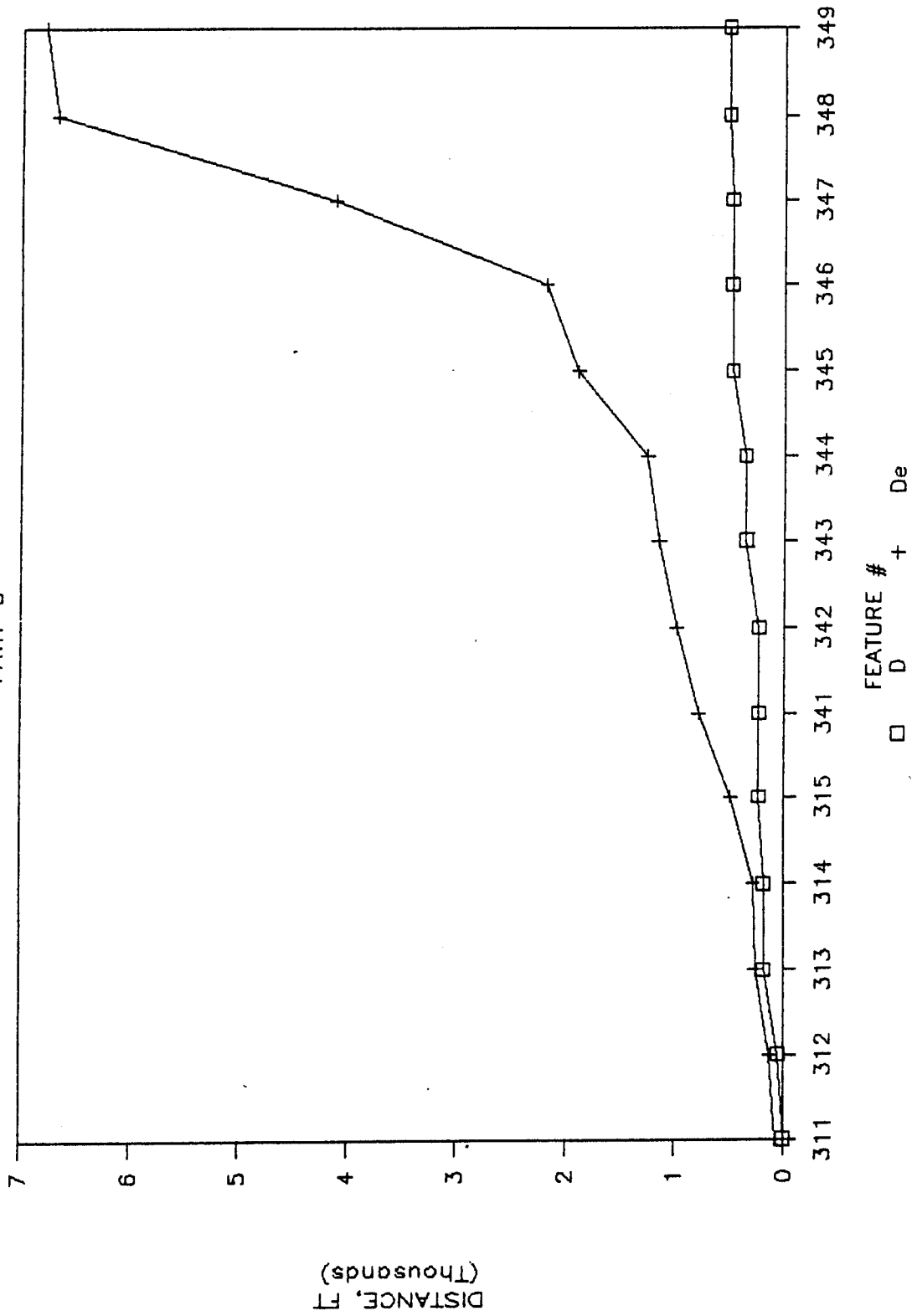


Figure 19

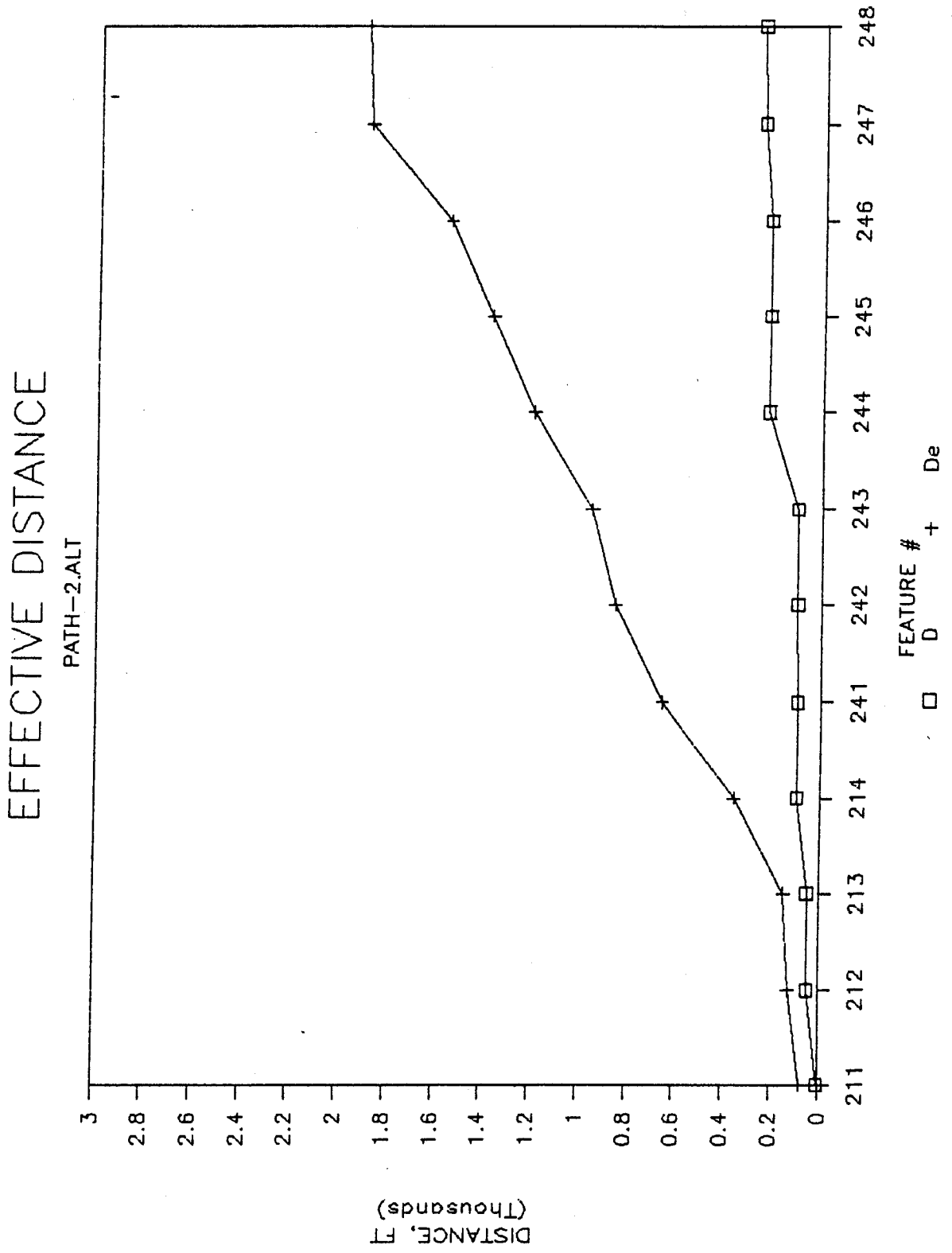


Figure 20

EFFECTIVE DISTANCE

PATH-2.MAN

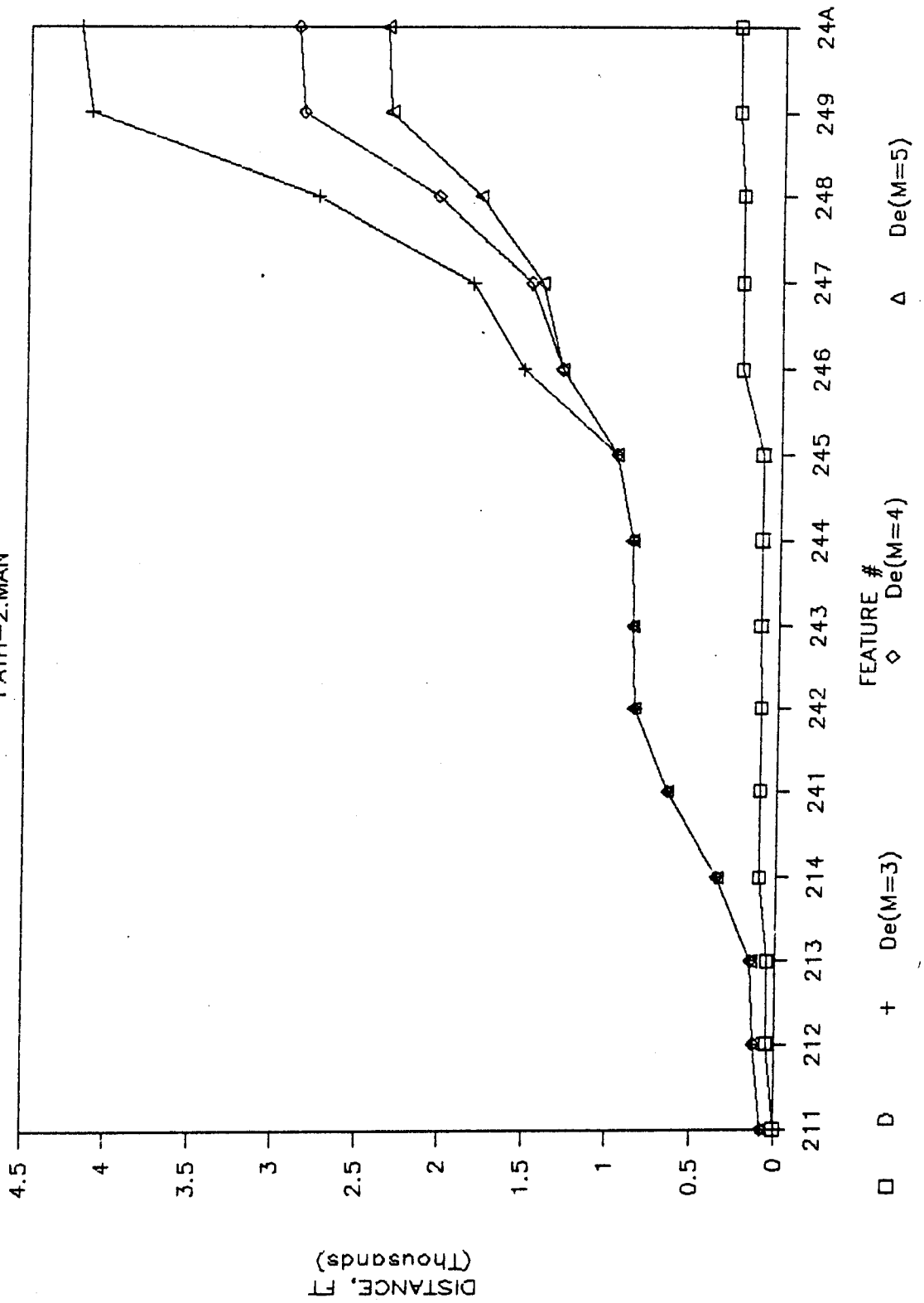


Figure 21

B21