



# WPI

# Bangladesh Refugee Camp

Abigail Sumner, Alex Abrahamsen, Bella St Angelo, Joe Molder  
Professors: Dr. Soroush Farzin-Moghadam, Dr. Courtney Kurlanska

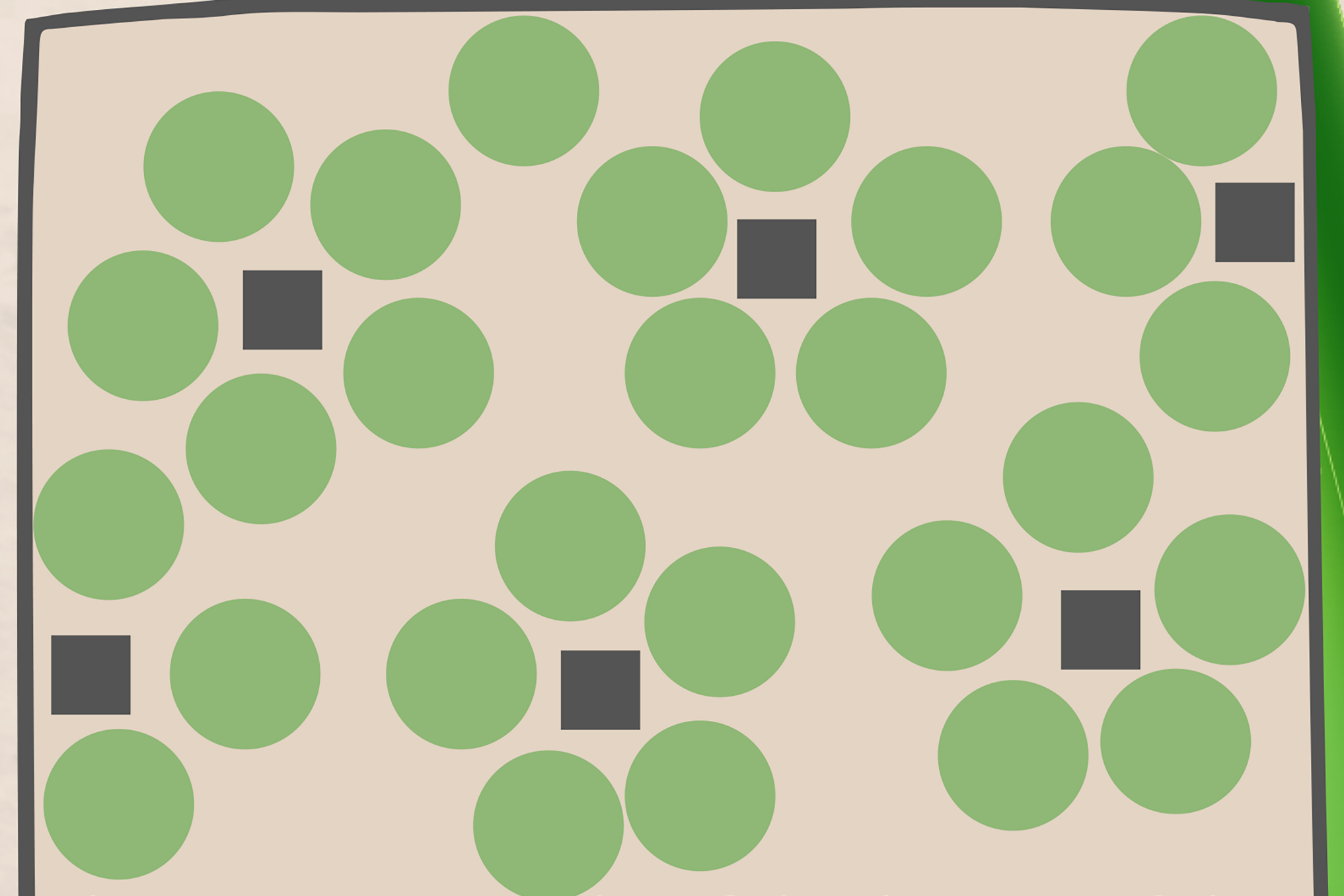
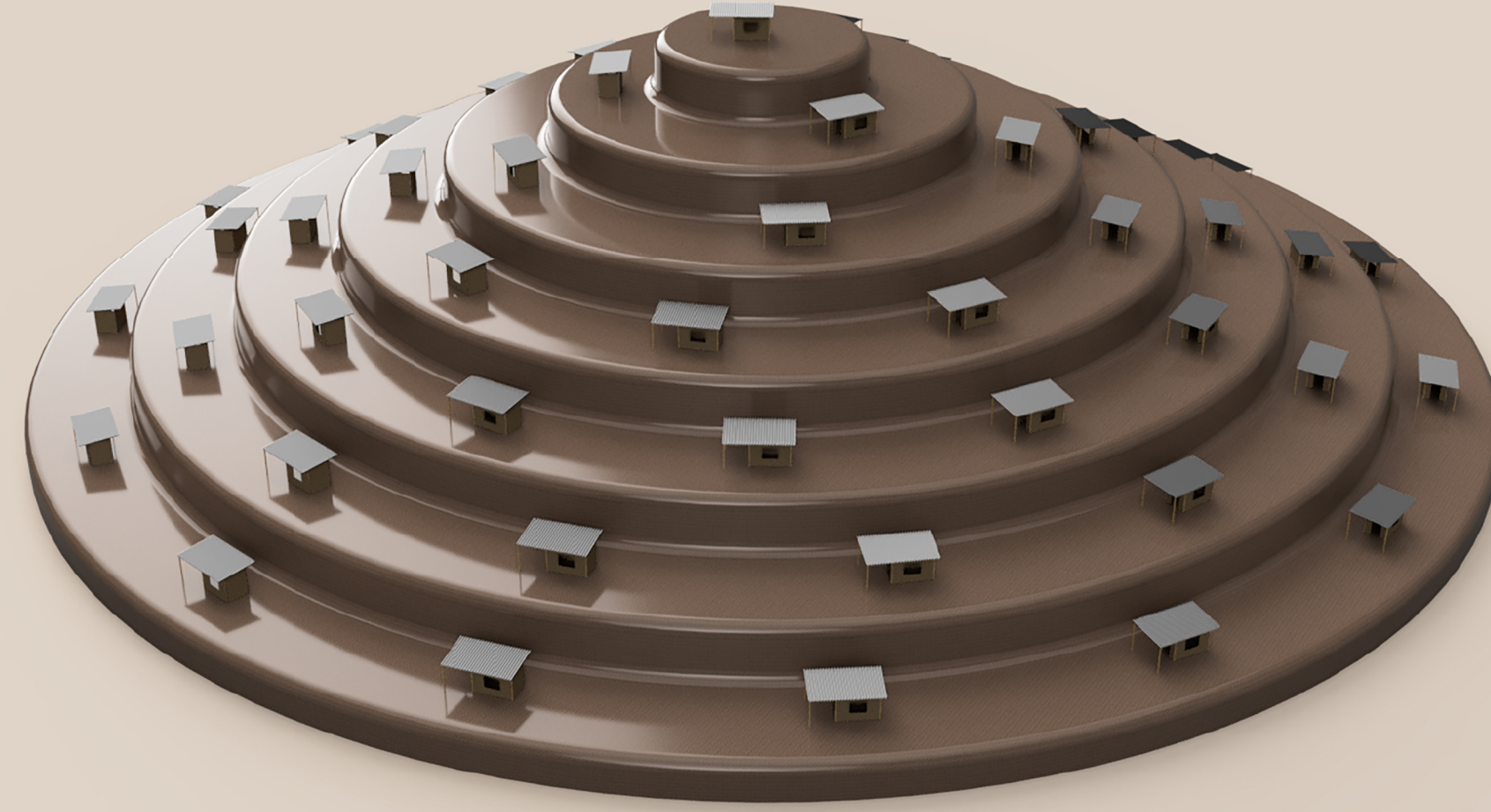
## Background & Context

- Religious persecution from Myanmar gov't
- Rohingya Muslims flee to Bangladesh
- Mostly single mothers and children



79% of Rohingya's population is seeking refuge in Bangladesh

This shows the mound structure with the layers supporting both the shelters and the areas for rice paddies and farming built upon the existing landscape



This is an example of the layout of the camp and shows just a portion of the total camp.

● = One mound ■ = Community center

## Culture:

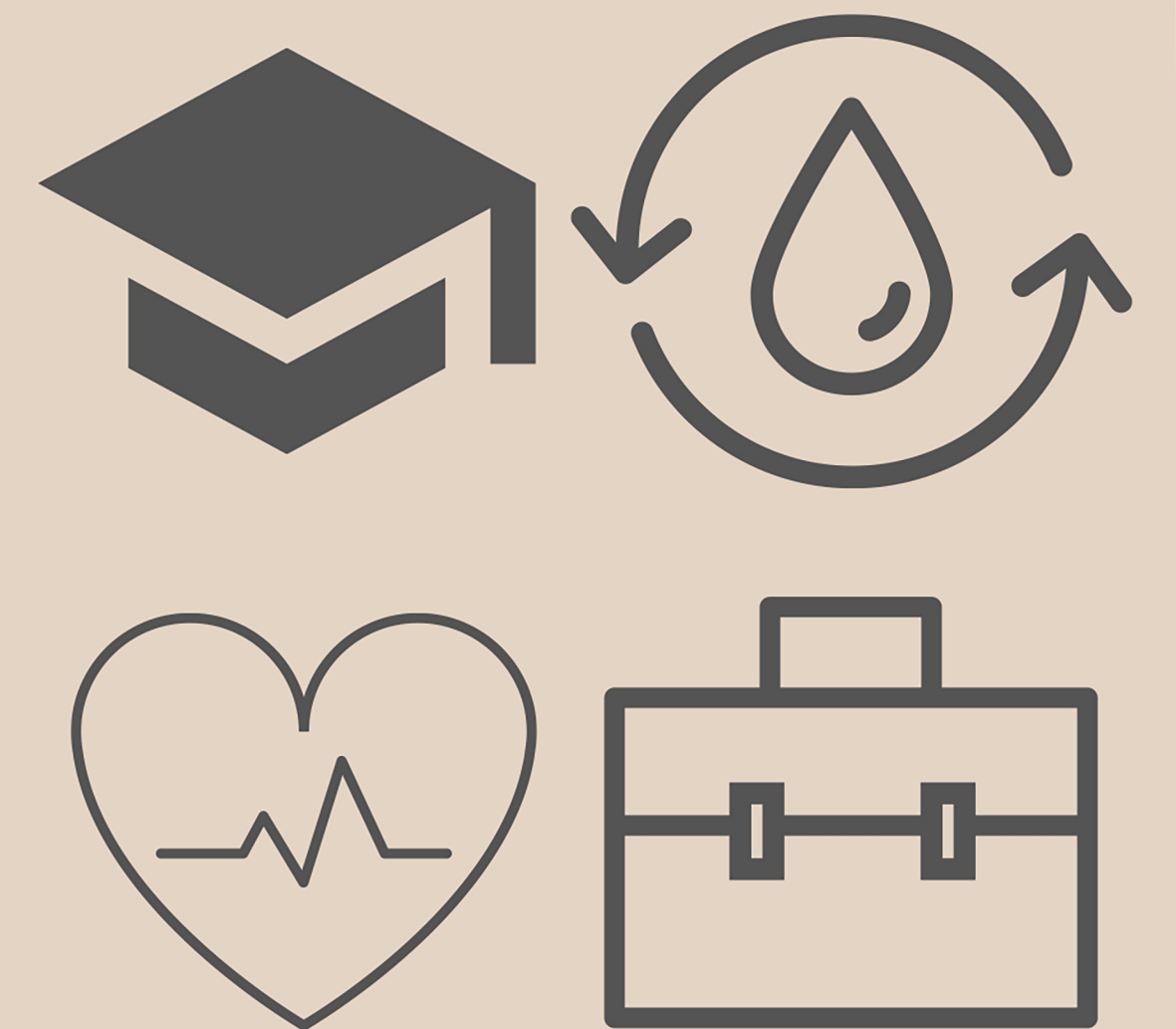
- Farming small crops and rice terraces
- Large family structures
- Females are not educated, or work
- Religion plays a role in all aspects of life

## Technical Aspects and Drawings:

- Dimensions 6'x10'x7' with 7' roof overhang
- One room; one window; one door
- Raised roof for ventilation
- Metal sheet roofing serves as protection from elements and helps keep the room cool.
- Materials: Bamboo, tarps, plastic, metal sheets
- Constructed on terraced mound structures
- Shelter from wind & rain on backside of mound
- Roof at same angle/slope of mound to direct rainfall & wind
- Terracing supported by plant root growth

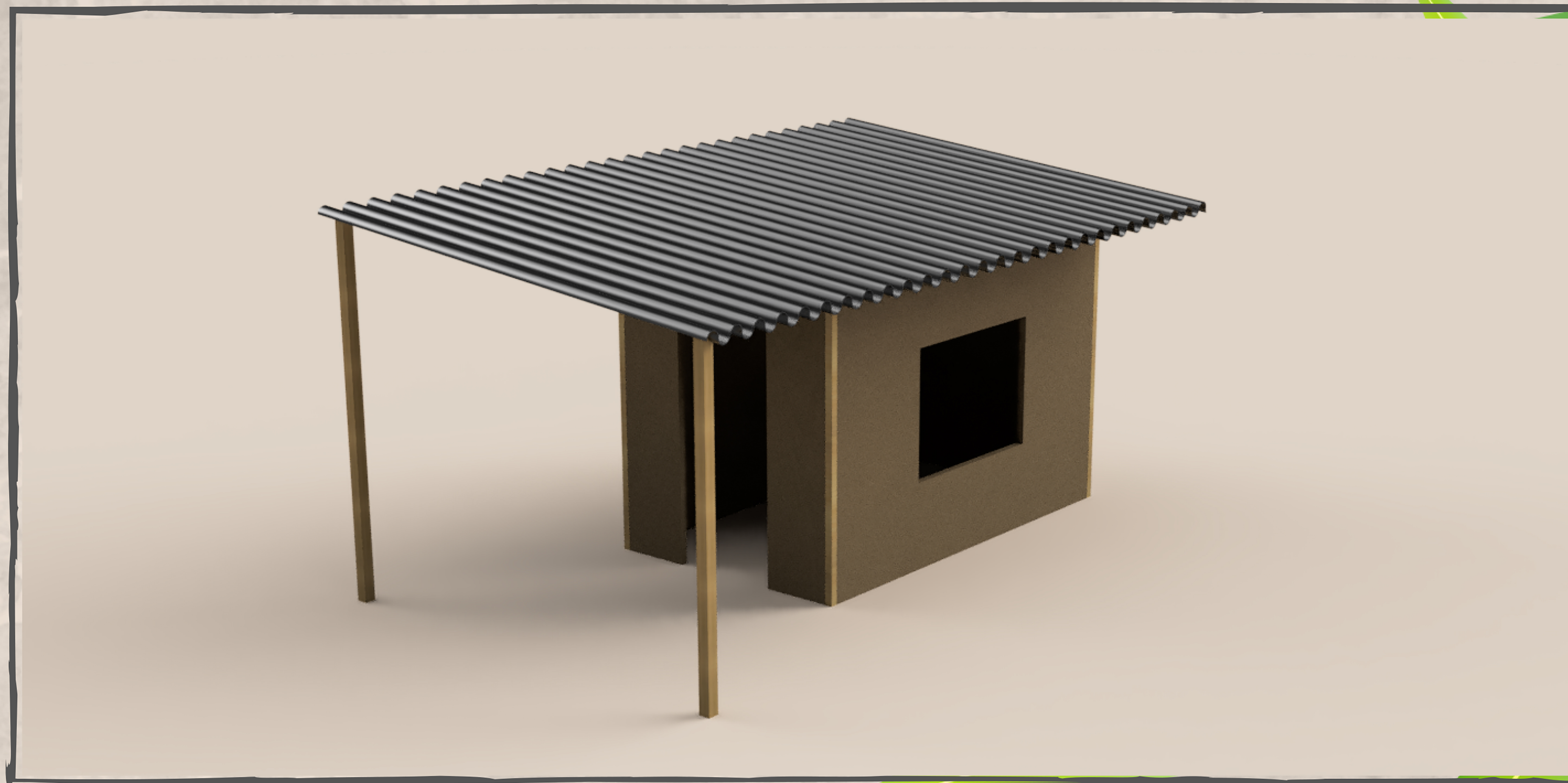
## Future Plans:

- Better reliable clean water supply
- Drainage system
- Healthcare
- Education
- Jobs
- Community Centers



## Weather & Land Use:

- Heavy wind & rain
- Monsoon season
- Fires
- Farming
- Flooding
- Livestock
- Erosion



## References:

- BBC. (2020, January 23). *Myanmar Rohingya: What you need to know about the crisis*. BBC News. Retrieved October 6, 2021, from <https://www.bbc.com/news/world-asia-41566561>.
- Hossain, S., Rahman, A., Ahmed chowdhury, M., & Kumar mohonta, S. (2020). Plastic pollution in Bangladesh: A review on current status emphasizing the impacts on environment and public health. *Environmental Engineering Research*, 26(6). <https://doi.org/10.4491/eer.2020.53>
- International Crisis Group. (2018). *What Next for the Crisis? In The Long Haul Ahead for Myanmar's Rohingya Refugee Crisis* (p. Page 11-Page 14). International Crisis Group. <http://www.jstor.org/stable/resrep31391.7>