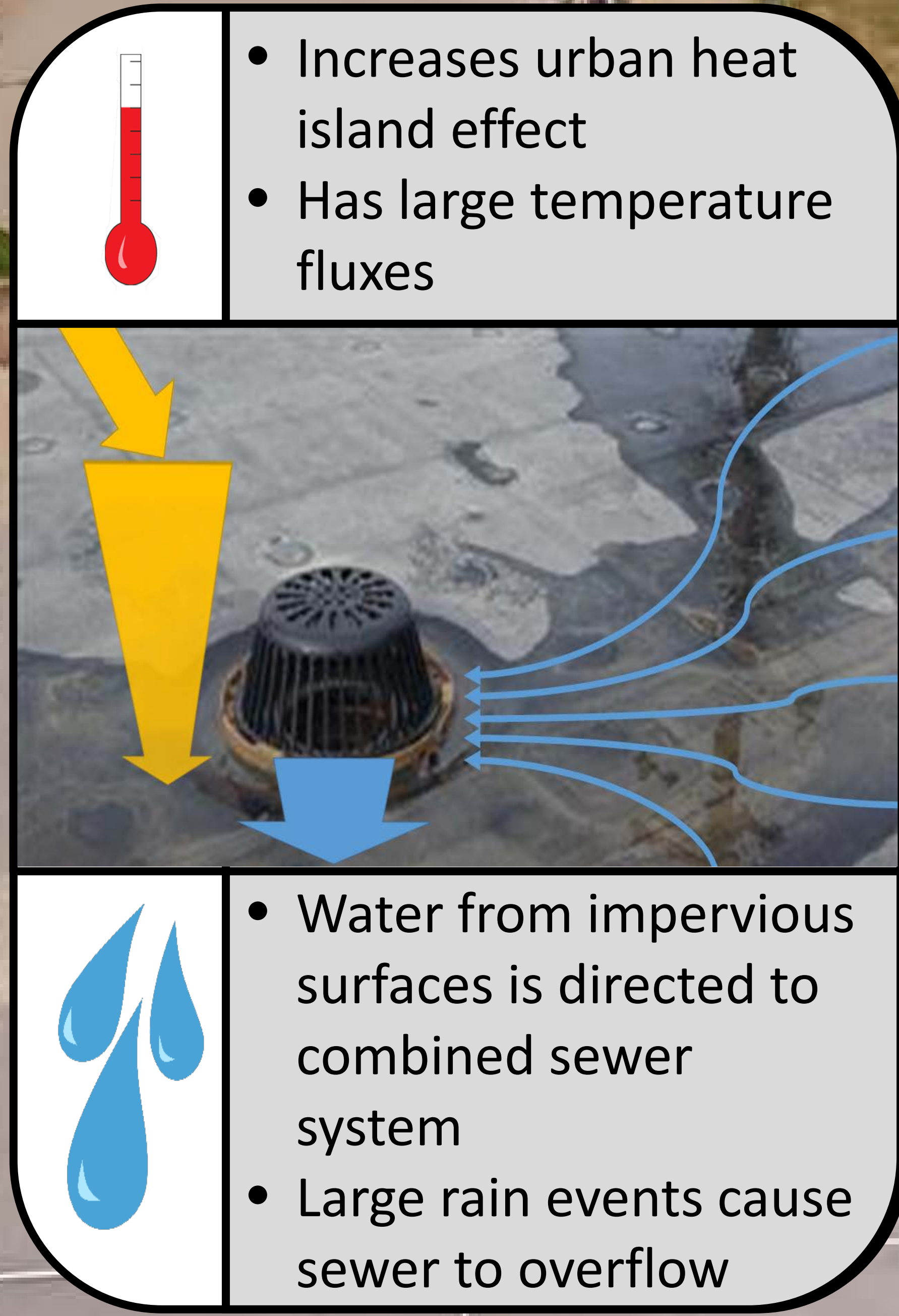


## Problem

Too many impervious surfaces within Worcester cause the water table to be unstable



## Green Infrastructure Limitations

1. **Space**
2. Ability to be constructed and maintained
3. Overall cost
4. High traffic
5. Winter weather

## Goal:

Minimize the effect of extreme weather using green infrastructure

List the pros and cons of each green infrastructure

Identify the locations where green roofs will be most effective

Determine the best way to finance the green roofs

Aesthetically pleasing

## Tatnuck Magnet School

Extends life of roof

Reduces noise pollution

Pays for itself over time

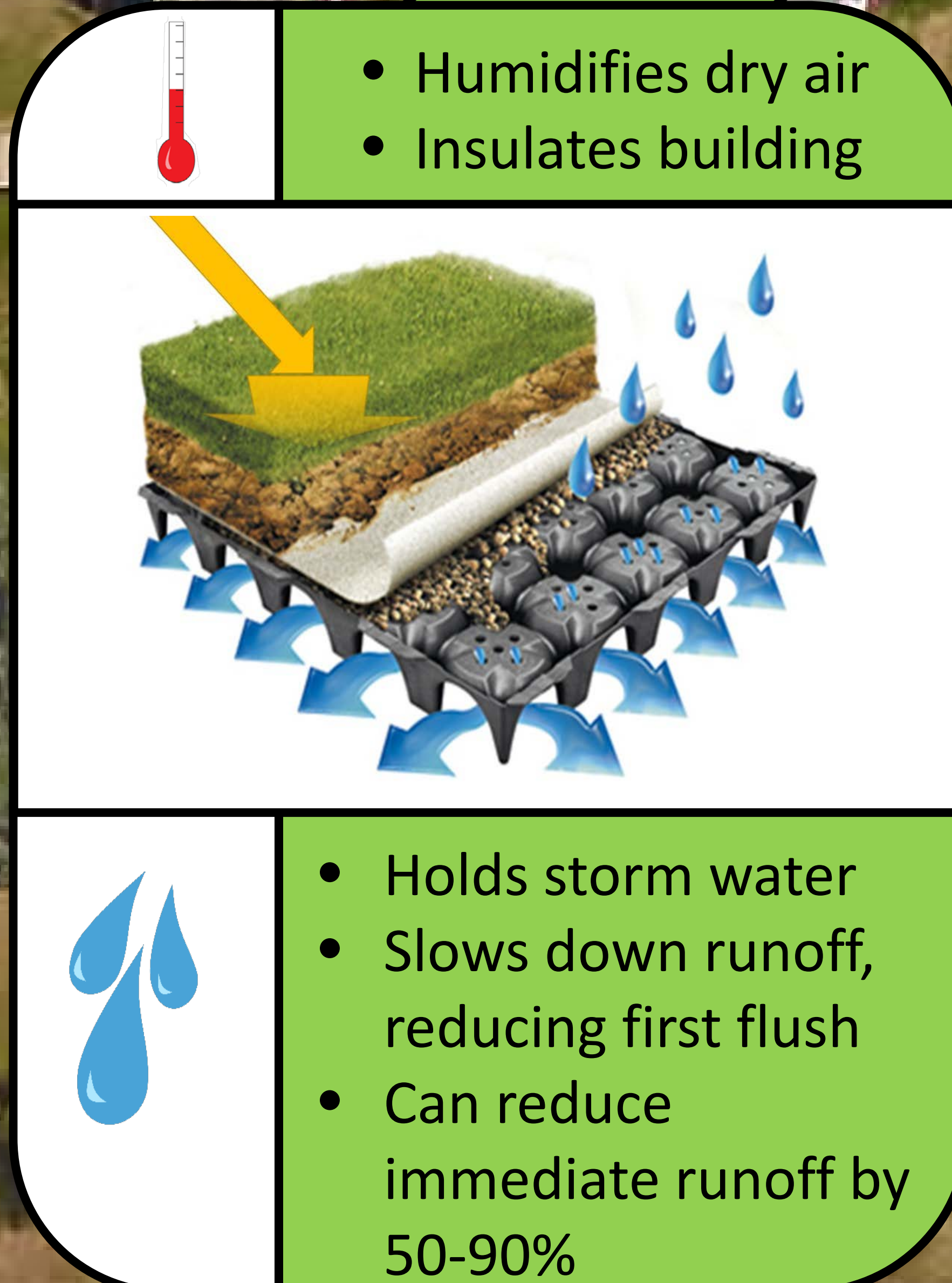
Reduces air pollution

## Green Roof

Minimal space required

## Acknowledgements

Thank you to Professor Mathisen and, the CEO of Green Living Technologies International, George A. Irwin for guiding our project and giving us valuable resources to utilize.



## References

- <http://www.clipartpanda.com/categories/rain-clouds-clipart>
- <http://www.wallbarn.com/products/roof-structural-drainage/protecto-drain-60p/>
- [https://upload.wikimedia.org/wikipedia/commons/d/d3/Tatnuck\\_School%2C\\_Tatnuck\\_MA.jpg](https://upload.wikimedia.org/wikipedia/commons/d/d3/Tatnuck_School%2C_Tatnuck_MA.jpg)
- <http://burgler.wikispaces.com/4th+grade+unit+3>