

# William Grogan wins IEEE's Educational Innovation Award

by Michael Dorsey

(WPI News Service) — William R. Grogan, dean of undergraduate studies at Worcester Polytechnic Institute and the guiding force behind WPI's unique educational program, has received the 1986 Major Educational Innovation Award from the Institute of Electrical and Electronics Engineers' (IEEE) Educational Activities Board.

The award recognizes "outstanding contributions to engineering education by visionary leadership in developing and implementing innovative engineering education programs."

Grogan joined the WPI electrical engineering faculty in 1946. In the late 1960's, he was elected to a high-level committee that, over the course of two years, shaped the WPI Plan, which has been called the most significant educational innovation of the past several decades. After the plan was accepted by the WPI faculty and trustees in 1970,

Grogan was appointed to the new post of dean of undergraduate studies to oversee the implementation and administration of the Plan.

In recognition of his dedication to the Plan, Grogan has previously won the American Society for Engineering Education's Chester F. Carlson Award for Innovation in Engineering Education and the Worcester Engineering Society's Scientific Achievement Award. In 1983, he was named a fellow in the IEEE in honor of his contributions in engineering education. In addition, a paper on the Plan won Grogan the 1980 William E. Wickenden Award for the best paper published in *Engineering Education* that year.

In a radical departure from a long tradition in engineering education, the WPI Plan judges student performance, not solely on the basis of grades or the number of courses passed, but on a demonstration of competence through project work. In addition,

the Plan balances a student's proficiency in his or her major field of study with a demonstrated appreciation of the humanities and to the social implications of science and engineering.

In the years since the early 1970's, the Plan has been the center of a tug-of-war between those who have sought to maintain an ideal of a completely student-directed program and those who have proposed changes to the Plan to make it more acceptable and comprehensible to graduate schools, potential employers and engineering accreditation boards. Grogan noted in a recent issue of WPI's alumni magazine, the *WPI Journal*.

During the past academic year, for example, the grading system has been changed from one with two passing grades — acceptable and distinction — to one with three grades — A, B, and C. In addition, a system of distribution requirements was implemented in the major engineering programs to satisfy the requirements of the Ac-

creditation Board of Engineering and Technology.

Though the Plan today is not the "educa-  
(continued on page 3)

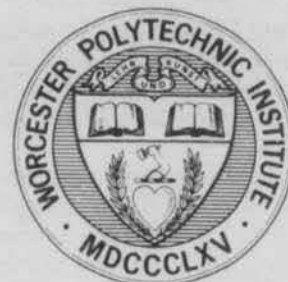


## WPI Newspeak

The student newspaper of Worcester Polytechnic Institute

Volume 14, Number 21

Tuesday, October 7, 1986



## Research Emphasis Questioned at Goals Meeting

by Mark Osborne  
Newspeak Staff

October 1st marked the day that the faculty goals committee presented the finalized statement of WPI's goals to the students for review. Approximately 26 students and several faculty turned out asking questions ranging from emphasis on the graduate program to lack of classroom space. Though there were several arguments made by attendees, none of them were aimed at the goals document itself, but rather at possible consequences of its adoption.

Much of the conversation centered on the topic of faculty research and its effect on both graduate and undergraduate students. Though the undergraduate population will remain "more or less the same size," significant graduate growth in one or two departments is expected. To assist in this end, the newly formed Research Development Council will serve to "funnel money" from outside sources to eligible faculty.

The committee stated that its "fundamental thrust [was] to improve scholarship." The question of whether scholarship should be equated with funded research was raised and

emphatically denied by WPI president Jon Strauss, who stated that "scholarship is a necessary condition for good teaching," but that scholarship was not restricted to research.

Secretary of Faculty and committee member Paul Davis reassured the undergraduates that they would not be passed over in favor of becoming a graduate-oriented college, and that the committee had decided that the way in which WPI could improve itself was through "maintaining our strength in our undergraduate program."

On the subject of expansion of the institute, Strauss described the plans being made for the new CS/EE building. A six million dollar project, Strauss indicated that approximately \$1 million has been generated, and that plans are underway for a major fund drive which would "unofficially" total \$50 million.

Committee members present included: Professors Davis, Bluemel, Hagglund, Demetry, and Peura, in addition to president Strauss and Academic committee chairperson Chrys Demetry.

## Alumni Association Develops Plan for Lifelong Interaction

by Robert G. Dietrich

WPI Director of Alumni Programs

Last fall, Paul Bayliss '60, the President of the WPI Alumni Association, recognizing the changing demographics and needs of the alumni body, appointed a special committee to develop a Master Plan for the Alumni Association for the next five years and beyond.

The Master Plan committee, consisting of both students and alumni, accepted the pretext that recognition of WPI as an outstanding educational institute and an awareness of the programs of the Alumni Association, help to build pride in the Institute. This ensuing pride usually leads to involvement and support of WPI and the Alumni Association. In light of the fact that over 50% of the alumni body has graduated in the past 15 years, the committee has recommended that the Alumni Association focus efforts on implementing special programs for the young alumni. The master plan also calls for the Alumni Association to broaden its programs aimed at developing relationships with undergraduates as early as possible.

A key element in building a strong bond between young alumni and WPI will be a plan to promote interaction between alum-

ni and students, which will help alumni become more aware of issues that face students on the campus. This interaction will also provide a means for networking which will prove beneficial during the student years as well as following graduations, particularly as young alumni begin to build a network of personal and professional contacts.

The Master Plan therefore recommends that WPI and the Alumni Association actively pursue a course of action aimed at developing a lifelong interaction between alumni and students of the college that commences the first day of the freshman year. The purpose in developing this interaction is to instill interest, knowledge, and pride by alumni and students in WPI.

In order to implement the ideas and philosophies set forth in the Master Plan, Mr. Bayliss has appointed four task forces to study the areas of Student Alumni Interaction, Young Alumni, Mentorship (providing a means for one on one relationships with alumni and students) and Personal and Professional Growth. Each task force will be charged with developing recommendations for programs which will help to foster a lifelong interaction between WPI, its students and alumni.

## WPI Wireless Association Heard on Space Shuttle

by Joseph Fitzgerald

During late October of 1985 the Space Shuttle "Challenger" had a very special payload. Three European scientists carried aboard with them some radio equipment for a test of simple emergency communications. Radio operators around the world were requested to send their call letters and location over the air when the Shuttle was passing their part of the world. Wireless club members Robert Morales and Joseph Fitzgerald prepared equipment and made computer predictions to optimize their chances of being heard in orbit. Both radio "hams" have used satellites to send their signals as far as Africa, but have never sent signals to manned spacecraft.

Since the scientists on the spacecraft had to attend to other experiments, a tape

recorder was attached to the Shuttle receiver. A team of experts in Germany analyzed the tape after the mission, and announced thirteen New England stations heard on the tape. WPI hams were disappointed when they learned that the club call letters, W1YK, were not on that list. Apparently the omission was a clerical error; last week German authorities confirmed the reception of the WPI signal.

The club's interest in space communication has not waned with the current moratorium on Shuttle missions. Communication via the Japanese "Fuji" satellite is common place from the club station in the Salsbury building. A brief introduction to satellite usage is offered for Wireless Association members and any other interested persons Wednesday, October 8, at 4:30 p.m. in Salsbury Labs room 011.



President Strauss at the Goals Committee Meeting.

PHOTO BY ROB SIMS, NEWSPEAK STAFF

## SAS VOTE RESULTS

SAS Elected Voting Member of Executive Council

Yes — 77.5% (200 votes)

No — 22.5% (58 votes)

Total of 258 Votes Cast

# EDITORIAL

## President Taking Some Heat

In the past few issues of *Newspeak* it seems that President Strauss has been the target of everyone's criticism. For a couple of weeks, the President's parking policy and his memo which revoked it were criticized. More recently, the faculty has used the pages of *Newspeak* to make known their objection to the President's emphasis on funded research.

Although we at *Newspeak* are flattered that this newspaper has been selected as the forum for this communication, we find the whole situation to be quite awkward.

Most of the criticism on both issues has come from the faculty. In the past, most concerns of this nature (protesting change) have been from students and directed at faculty. It seems unusual that the faculty are using *Newspeak* for this purpose. At any other college, one would not expect the faculty to use the student newspaper to bring up concerns about administrative policy. What is more unusual is that it seems this student newspaper is being used as an alternative to confronting the administration head-on.

An anonymous letter was delivered to *Newspeak* last week, from an untenured faculty member who was concerned that he had not received a letter from the president (that the president didn't think he was important). (*Newspeak* does not print unsigned letters.)

To put this whole situation into perspective, one must look at the difference between President Strauss and some previous administrations. Past administrations have been relatively passive, allowing faculty almost complete control over the governing of the Institute. President Strauss, on the other hand, has taken a more active part in the goal setting and policy making of WPI. Some would say that he has given direction to WPI which had not previously existed. Ironically, these strengths and the character of the President contributed to his appointment, which was, in a large part, influenced by the faculty.

So far, the faculty has yet to present very strong arguments against the President's policies, but rather have found fault with specific issues of implementation. The argument that faculty should not have to pay a nominal \$35 parking fee is as significant as the fee itself. Nor is the specific wording in a letter which encourages funded research significant. The real issues of placing better control over parking on campus and whether or not increasing funded research will be beneficial to WPI have not been addressed. This is probably because there is little to argue about in each case.

The faculty seem to be balking at change without taking a good look at the global implications of that change. They are criticizing a man who most-likely has examined these implications.

### Letters Policy

WPI *Newspeak* welcomes letters to the editor. Letters submitted for the publication should be typed (double-spaced) and contain the typed or printed name of the author as well as the author's signature. Letters should contain a phone number for verification. Students submitting letters to the editors should put their class year after their name. Faculty and staff should include their full title. Letters deemed libelous or irrelevant to the WPI community will not be published.

The editors reserve the right to edit letters for correct punctuation and spelling. Letters to the editor are due by 9:00 a.m. on the Friday preceding publication. Send them to WPI Box 2700 or bring them to the *Newspeak* Office, Riley 01.

Commentary articles reflect the opinions of the writer and not necessarily those of *Newspeak*.

## Newspeak

(USPS 535-480)

The student newspaper of Worcester Polytechnic Institute  
Box 2700 WPI, Worcester, Massachusetts 01609  
Phone (617) 793-5464

editor-in-chief  
Jim Goodell

news editor  
Jeffrey S. Goldmeer

faculty advisor  
Thomas Keil

features editor  
Lisa Alpers

photography editor  
Jon Waples

business manager  
Christina Tondora

advertising manager  
Jim Webb

sports editor  
Peter Yap

circulation manager  
Chris Pater

graphics editor  
Joe Sedor

associate editors  
Jack Spadaro  
Chris Pater

### STAFF

Jim Calarese  
Jody Bobbit  
K. Christodoulides  
Rob Day  
Andrew Ferreira

Brian Freeman  
Steve Landry  
Mark Osborne  
Sami Seyouri  
Rob Sims

Joshua Smith  
Chris Sweet  
Brian Teague  
John Whyte

WPI *Newspeak* of Worcester Polytechnic Institute, formerly the *Tech News*, has been published weekly during the academic year, except during college vacations, since 1909. Letters to the editor must be signed and contain a telephone number for verification. WPI *Newspeak* subscribes to the Collegiate Press Service. Editorial and business offices are located in Room 01, Sanford Riley Hall at WPI. Copy deadline is noon on the Friday preceding publication. Typesetting done by Devlin Graphics, Inc. Printing done by Saltus Press. First class postage paid at Worcester, Massachusetts. Subscription rate is \$12.00 per school year, single copies 60 cents within the continental United States. Make all checks payable to WPI *Newspeak*.

# LETTERS

## Projects Demand Creativity and Learned Skills

To Joshua Smith:

Your commentary printed in the Sept. 30 issue of *Newspeak* questions the offerings of a WPI undergraduate education. The closing paragraph of your article is particularly disturbing, as you claim that, "... creativity is never the answer in the back of the book when you learn in an engineering environment. The ultimate goal of an engineer is to eliminate the need for the human aspect of his work, namely science." To say that your claims are off base would be a major understatement.

It is understandable that, as a sophomore, you have yet to fully understand what your projects and upper level courses will supply

relative to creativity. A B.S. graduate hopefully attains engineering tools through basic courses and further gains the ability to apply those tools to design work. Teaching a student to successfully apply his skills during design work are the goals of project work and upper level courses. Many will tell you that one cannot easily teach these skills. Further, WPI has and will continue to successfully prepare undergraduates for performing analysis and research and development work as professionals.

It is your obligation and responsibility to write commentaries that are either entertaining or informative. Unfortunately, your Sept. 30 article was only misleading.

— Scott D. Hanna '87

## Male Rape Also an Issue

Dear Editor,

I read with interest the feature article on the growing problem of date rape in this [last] week's *Newspeak*. However, you neglected the fact that rape is not always a sexual assault on a female victim. What about rape of a male victim? Apparently this has been an increasing problem over the

years, too, since Chapter 265, Section 22, of the General Laws of the Massachusetts Legislature was amended in 1974 to read the victim of rape may be male as well as female. As such, I would appreciate seeing a follow up article to make WPI students aware of the problem of date rape against males.

— Jeff Gornstein '90

## Values and Sciences

To the Editor:

Joshua Smith made some very good points in his commentary last week (9/30/86). Although I think he has overestimated the character of the scientist and the nature of science, his rendition of engineering seems correct. If we value creativity and ingenuity, then we must conclude that a vast portion of engineering jobs are undesirable and indeed, creativity tends not to be encouraged or practiced in engineering. Basic research, on the other hand, demands much more creative thought, a firm understanding of the entire basis of science, and the ability to integrate many different concepts, ingeniously, into a consistent theory. Between engineering and research is developmental engineering which relies heavily on ingenui-

ty, but tends to be narrowly aimed.

But creativity is not the cornerstone of the hard sciences, *method* is. Certainly a scientist can find challenge in attempting to apply the scientific method to explore a specific phenomena, but from that point of view of valuing creative thinking, the soft sciences offer a much greater challenge. Sociology and economics are currently in the midst of developing as understandable and predictable "sciences". If one values ingenuity and creative problem solving, these are the most challenging fields to work in. Those who value method study hard science, those who value money study engineering.

— Tom Webler

GS - Biomedical Engineering

## Alumnus Praises Photo Features

Dear *Newspeak* Staff,

In regards to your Sept. 9, 1986 issue, I would like to commend your efforts in the production of this paper. I found the photo feature by Jon Waples most entertaining and up to the harsh standards I tried to help

establish. Jon, the Beef in Black Bean Sauce is good, but better still is the Jordan Chicken. New York is fun and Cornell is a lot of work.

Sincerely  
Jeff Winick '86

former *Newspeak* photo ed.

## Put Your Money Where Your Mouth Is

To the reader:

Resolve: Worcester Polytechnic Institute should be required to refund all the educational expenses to any student who spends time at the Institute and fails to get a degree. In fact, every private institution of higher learning should be required to do the same. New educational ideas failed to induce other colleges to emulate WPI — perhaps this might put Tech on the map.

We'll pause a moment, while the faculty and the people in Boyton Hall finish choking on their coffee.

Let's get one thing straight right from the beginning — I don't stand to make any money from this idea. I spent four years at Tech and emerged with a BSCS. There is a piece of stiff paper at my parents' house attesting to this reality. In fact, it was awarded with distinction — whatever that means.

No one guaranteed this, however. When I entered college in the autumn of 1981, the implication was that I would receive an education in one of the disciplines offered by the Institute. They didn't promise me a good job (which I got) or good friends (which I made) or respect in my profession (which I have). They implied I would get an education, and I got it. At least, I have a major computer manufacturer convinced that I did.

Viewing the whole transaction from a business point of view, serious questions about my grip on reality have been raised. I handed over a sum of money that outstrips

the gross national product of some members of the United Nations without any promise from the Institute that I would ever get anything but a ten-year debt of the size people used to incur buying a house, and an assortment of obsolete textbooks.

And anyone who says higher education is not a business is a liar. When you come right down to it, colleges and universities offer a commodity (education) in exchange for which they demand a certain amount of money. The same principle operates in everything from grocery stores to used-car dealerships. Of course, I understand there's a lemon law to keep an eye on the used-car dealerships.

There's no such restriction on higher education. With all the leagales boiled away, WPI essentially promises to take a lot of money every year without promising to deliver a single thing in return. The whole system runs on a lot of traditions. Traditions may be a good reason to throw a party at Harvard, but it won't do much for you on a job application.

"But wait!" I hear President Strauss asserting, "WPI can not be held responsible for the failure of students to meet the requirements the Institute has set down."

And back before Dr. Strauss (he has a Ph.D in something, doesn't he?) took the helm at the Institute, that was true. Actually a lot of changes took place before Dr. Strauss arrived, but I haven't heard him com-

(continued on page 3)

# COMMENTARY

## Cynics Corner (Paranoid Corner?)

by *drew Ferreira*  
Newspeak staff

No one believes me when I tell them that I am a very boring person. People ask me to go out and have fun. I tell them, "I can't - I'm boring". They get all offended and say things like "You're not boring". They don't convince me.

It amuses me that people always believe that I am living a secret life of wild adventure, carousing about the galaxy, behaving in a manner most unbecoming of a Mathematics Major. Those people who imagine me so are very wrong. I live a very mellow life. I listen to mellow radio stations. I watch mellow TV shows. I talk in a mellow voice. I would go so far as to say that I eat mellow foods, but in truth, when I want some excitement in my diet, I'll often combine macaroni elbows with shells.

Actually, I don't eat entirely mellow foods. I drink a lot of coffee. You can not classify coffee as a mellow food. If there is an opposite to mellow food, then coffee is it.

I used to hate coffee, that is, until I tried coffee. I like my coffee with a sufficient amount of sugar. I am not sure how much sugar I actually use, just barely enough to have a small island form in the middle of my cup.

Coffee does some wonderful things to me. It makes my typing speed break eighty words a minute. It makes mornings enjoyable. It makes my head spin just like Linda Blair's. I like coffee.

But enough of the trivial things in life that makes the world go around; on to more interesting topics.

Ahem, does any body out there have any interesting topics? If you do, please send them to NEWSPEAK Box 2700. Be sure to include your name so I can credit (or blame) the appropriate people. (Please, nothing on parking policy or women - that's not my department).

I suppose I should explain why this column has been recently non-apparent in this newspaper. I could say that I was on special assignment in Washington or New York or maybe even Framingham. I could also say that pi was a rational number. In either case

I would have spoken with equal veracity. I could also go out on a limb and admit that I just haven't been feeling like writing much lately.

Last week I went to one of my professors and when she connected me with this column, she commented in her unique southern drawl, "Oh, so you're the cynic of the campus." To which I replied with a series of mumbles, shuffles and carefully timed shrugs and acknowledged that I was the fingers behind this keyboard. I suppose I would have liked to have responded with a cryptic "Well, let us say that that is the title of the column and whether it says anything about me is debatable." But of course, I didn't have that line all set up and ready to be spit out then, so I stuck with the unimpressive entry.

Since she has asked me that question, I have been trying to see if I am cynical. I am not sure. I looked CYNIC up in the dictionary and amazingly there was a sect of Greek philosophers called Cynics who had two major tenants. (1) Virtue is the only good and (2) self-control is the only way to get virtue. My roommates will attest to the fact that I am not always virtuous and only occasionally exhibit self-control. I think we can move on to definition #2.

The second definition mentions a person who believes all people are motivated by selfishness. Now that's not so. I give blood very frequently. How is it selfish to be harvested? I bet that some of you are suggesting that I give blood just so I can get some free cookies and fruit juice. You might have something there.

While at times I might mistrust other people's motives, I think a term better than cynical is paranoid. I often amuse my roommates with retellings of my daily paranoid fears (most of them center about finding dead bodies strewn about my apartment). It is usually at this point that my roommates look skyward, shake their heads and utter thanks to whatever forces may hear them that there is only one of me in the world (so they think...)

So I am still without definition. Not quite a cynic am I. But I don't think Paranoid Corner will hack it.

## ... Money

(continued from page 2)

plain too loudly. Besides, WPI isn't the only place in the country getting away with this, so we can't saddle him with the whole thing.

Once upon a time before the capability to change the Operational Catalogue at will, WPI embraced an educational philosophy that placed the responsibility for getting an education on the student. You had to achieve certain goals to earn a degree from the Institute. If you were irresponsible enough not to take the course work that would allow you to complete those goals, then it was your own damn fault.

To make a long story short, this didn't work. Or, at least, someone decided it didn't. Exactly who or why is not my point. My point is that the new educational philosophy retains many of the trappings of the old one, but the responsibility for the student's education has been placed back in the hands of the Institute, hands deemed capable by a number of committees whose job it is to decide these things. So the old opportunity argument just doesn't wash. WPI has decide exactly what you have to do to get a degree of your choice. If they didn't think someone was going to cut it, why did they let them in?

"Some people just don't want it badly enough," college professors will state. "We don't have time to be nursemaiding every lazy intellectual that comes this way." Very true, I note some of them don't have time to teach classes, either despite what the course schedule says. This is not a common occurrence at WPI - yet. And the Institute was not kidding when they said this was no picnic. One has to want a degree very badly, almost obsessively. Once again - didn't

they think the person was going to make it? Or didn't they tell you what the attrition rate is.

Still, other businesses have to run this risk. If you buy something from a retailer, and you aren't satisfied, they take it back, and you take your money back. If colleges and universities had to operate under this principle, every campus in the nation would have agents of the Better Business Bureau dangling from the ivy. Businesses that don't deliver go bankrupt. Why should the same fate not befall the people in the education business?

It all boils down to the notion that the educational institutions of this country are getting away with something pretty sneaky. You may have thought Paul Newman and Robert Redford were pretty clever in "The Sting", but this is even wiler. Some places are even letting parents pay twenty years in advance! The bait here is that by the time the offspring of my generation are ready to hit college the cost of getting a degree will be rivaled only by what the Department of Defense pays for the plumbing fixtures. No one mentions the twenty years interest.

So, come on, educational institutions. Put your money where your mouths are. Heaven knows there's enough money and mouthing associated with private education. I think state sponsored schools might as well be exempt, since people are used to getting robbed by the government. Unless, of course, the colleges and universities don't have as much faith in themselves as they'd have us believe.

- David F. Wall '85

## ... Grogan

(continued from page 1)

tional Utopia" originally envisioned by that committee in the 1960's, the philosophy it first embodies is very much alive, Grogan believes.

"The remarkable achievements of the past decade and a half have not passed without producing an enduring legacy of great

value," Grogan wrote in the *Journal*. "WPI today has a unique, dynamic educational program. Its projects and non-technical expectations provide WPI students the opportunity for a truly outstanding educational experience."

## My View from the Fourth Estate Answering the Mail

by *Joshua Smith*

With the possible exception of bills (telephone, gas, electric, cable, American Express, Worcester T&G, and a myriad of others), I love mail; I even love mail that is sent to me by my editor (actually that's the mail I love the most). If you read Newspeak weekly, you are probably wondering how I will respond to the letter that appeared in last week's "LETTERS" section (if you missed it, don't worry-it wasn't really that great anyway). I, however, was much fascinated by the reaction I received from \*you, my readership. In one day, I received more compliments on my style and content than I had received all of last year (and both people sounded very sincere, too!). All joking aside, I was really flattered.

At this point, the "journalist" is supposed to provide background on the subject which he has just presented in his leading paragraph. You see, a journalistically correct article consists of four essential sections: the headline, in which the journalist summarizes his story; the background section, in which the journalist presents background information on his story; and finally, the details section, in which the journalist lists all the minor details of which an intrigued reader might want to be informed. The reason I tell you this is simple: I want you to know that I do know how to be a journalist. It has been asserted that I do not know a thing about my craft, and to this I take offense. I know everything that I need to know, and I ignore every bit of it! I hate stylistic constraints, so I don't follow them. Which is why I feel free to use four parenthetical expressions in one paragraph (see the "leading paragraph" for exemplification). I think reading a column should be interesting.

The Background: The letter I received asserted that I show no signs of humor in my articles: and that, by the correspondent's definition of journalism, I am not a journalist.

Humor is a funny thing. Its effectiveness tests in the level of sophistication of the reader. I would not claim that the writer of the letter appreciated more sophisticated, nor less sophisticated humor. I merely contend that he must appreciate something different. To measure the sophistication of humor is a difficult task. Take "Danger Mouse" (cable channel 27, 7:30 p.m., Mon.-Sat.) for example. It is a children's cartoon; yet the writing is so sophisticated, I seriously doubt that children really enjoy it for it's humor.

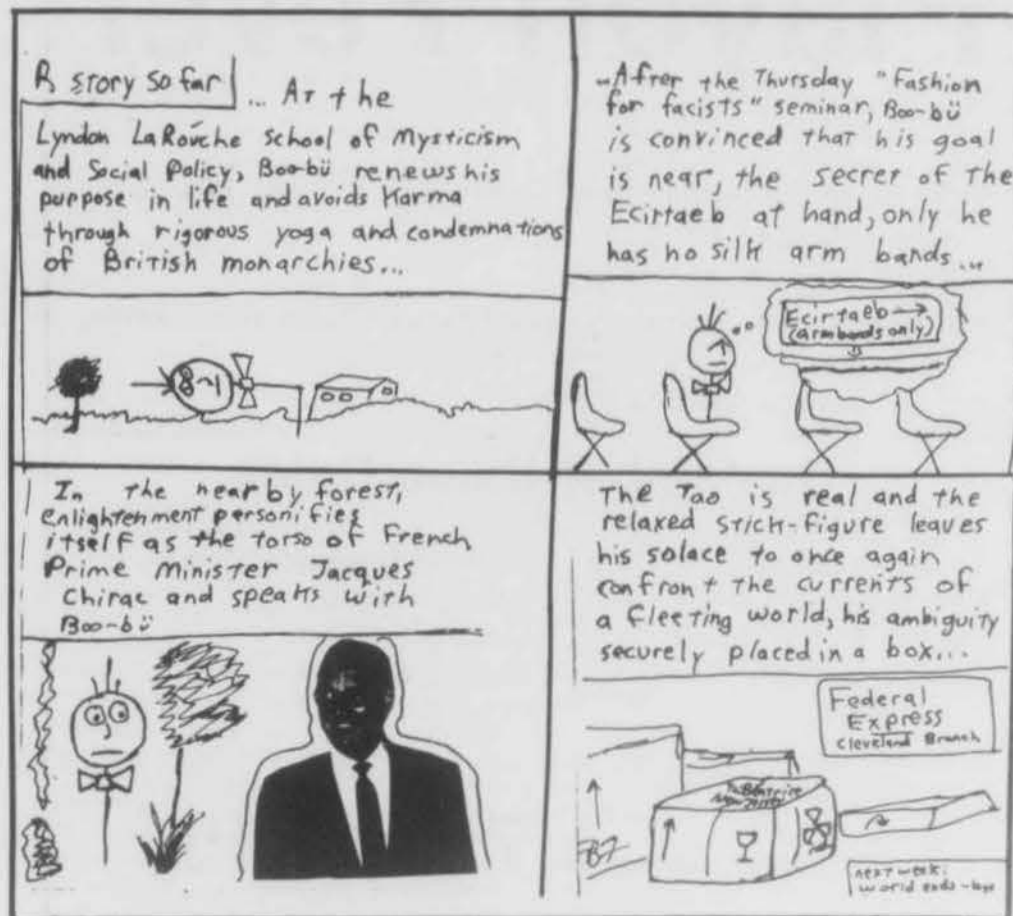
I dare not condescend upon the writer of the letter in question, because I don't understand his humor either. He is one of a group of people who write nonsense messages back and forth to one another on the DEC Mail Bulletin Board (I recognized his user-name). In case you aren't familiar with the term, a Bulletin Board is generally an information

database set up on a local system like the DEC-20 or a regional or national system of micro-computers. It's purpose is much like that of the bulletin board across from the bookstore. If you want to see it, just log on to the DEC (find a friend who has an account), type "MM <Return>", "BB <Return>" or "R <Return>". The terminal will proceed to spew out page after page of meaningless nonsense and private conversations made public for no apparent reason. As far as I can tell, this is humor. But I don't understand it. I don't criticize it; I just fail to find it funny. It is at a different level of sophistication than the humor to which I respond.

The users of this DEC-20 thing seem to have a peculiar fascination with etymology. So much so that I think WPI should offer a major in Etymological Engineering. I bet all those users would switch majors in a second. (By the way, Etymology is the study of words, their meanings, and their origins.) My friend, the furious philistine, feels that journalism should be without opinion, without artistic license, and always of the utmost importance. With his definition he has excluded such noted columnists as Andy Rooney and George F Will from those who he feels are adequate journalists.

Any good etymologist would realize that colloquial meanings of words should be assumed correct, regardless of what the dictionary might say. Words have the meanings which society dictates; if Rhode Islanders want to call a milkshake a "cabinet," then that is what "cabinet" means in Rhode Island. Similarly, if journalism is commonly thought to include commentary, so be it. The name of my column is "My View from the Fourth Estate." The Fourth Estate is a term which I believe originated during the Feudal period; it means the class of people who comment and report on the situation of the other three estates (the Nobility, the Clergy, and the Commons). I feel that I am a member of the Fourth Estate; but if my adversary would prefer, I could always change the name of my column to "My View from Beyond the Fourth Estate" (I say this sarcastically, because I know my editor would never allow me a 37 character headline - 30 characters is too long already).

That's my response. To tell you the truth, the only reason I responded at all was because so many people asked me if I was going to; I couldn't let them down. It is strange that two short paragraphs could prompt me to write the longest column I've ever written. In the midwest, debate and forensic speaking are big in high schools. I debated for three years, and competed in impromptu speaking as well. I pride myself in my ability to respond. Send me more letters. I dare you.



### Student Government News EXECUTIVE COUNCIL

The Executive Council met last Thursday, October 2.

Committee reports: the Residence Hall Council reported that study breaks will be held the last week of school. The Panhellenic Council reported that an alcohol awareness program will be presented in B-Term. The Academic Committee reported that they will be meeting with Dean Grogan, Prof. Schacterle, and Ann Gearvin to discuss the projects (MQP, IQP).

The Inter-Fraternity Council reported that

parties are getting out of hand, and that there are now more complaints from neighbors. Because of this, some party guidelines have been changed.

The new rules are: (1) no party posters, (2) no one allowed in after midnight, and (3) music, beverages shut down at 1:30 a.m. with the house being cleared at that time.

New business: Pathways was given a new budget of \$4,000, from the Publication Fund. This money will be distributed on a half year basis.

### Glenn Phillips Band Plays to Small Audience

by Jean-Pierre Trevisani  
Newspeak staff

This Saturday, at around quarter of ten, the Glenn Phillips Band started playing in front of the thirty or so customers of Gompei's Place.

I have to admit that when I walked in I had no idea of who "The Glenn Phillips Band" was. Some group, I thought, playing music my Grandmother would have liked. I was wrong. The Glenn Phillips Band is a modern group. A drummer, a keyboardist,

a guitarist and a bass player. They look a little like Daryl Straits but have no vocals. They were really good. Instrumental music with excellent drums support, frequent guitar solos, good rhythm and not tiring at all. One of the most marking characteristics was the variation in the intensity of the music. At one moment the keyboards would be playing alone and suddenly, like coming from nowhere a powerful drum sound would take over but only to allow the guitar to lead the

(continued on page 8)

### Student-Faculty Committee Actions Update

The Academic Committee has been discussing ways of improving projects, particularly the project selection period in C-term. Send comments of suggestions to Chrys Demetry, Box 2440.

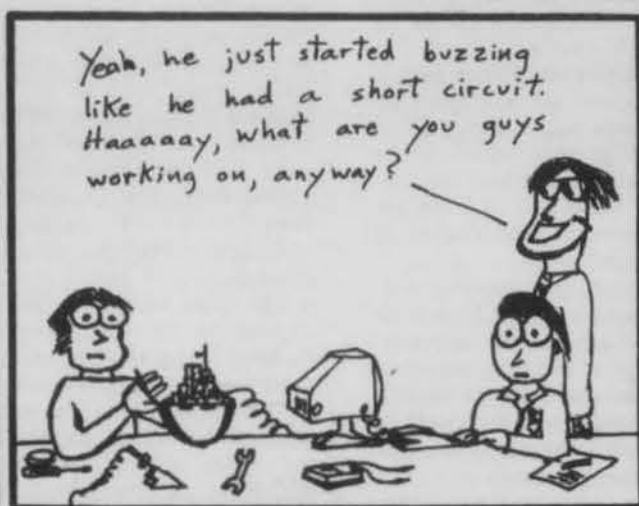
At the next faculty meeting, the Committee on Academic Policy will make a motion that Interdisciplinary majors be given the option of either satisfying distribution requirements or taking a competency exam. If the D.R. route is chosen, a three-person faculty committee would be assigned as the student's Program Advisory Committee, responsible for devising course distribution requirements up to a limit of 10 units.

CAP and the Committee on Governance have endorsed the formation of an Educational Development Council, which would

serve to foster improved teaching and learning on campus. The EDC would comprise three appointed faculty members, one student, and a full-time director. An initial funding level of \$100,000 is recommended, and faculty endorsement will be sought at the next faculty meeting.

Professor Hagglund has asked CAP and the Goals Committee to discuss what would be the most desirable ratio of graduate to undergraduate students for the next 10 years. He estimates the present ratio as 1:5, but is concerned that there may be an effort to change this ratio to close to 1:2. Professor Hagglund then recommends that a motion regarding this ratio should be presented to the faculty for vote.

### INSTITUTE ROAD by Sean Luck and Dave Derian



# ! PLAY BALL !

Come root the Sox on!  
as **GOMPIES PLACE**  
presents

## Playoff Fever

- During all games order any pizza, receive a soft drink or ice cream FREE!
- FREE popcorn
- Wear any of the Teams emblems, receive a frozen non-alcoholic beverage
- Enjoy it all on the BIG Screen

### Remember these Dates

<i>American League</i>	<i>National League</i>
Red Sox vs Angels	Mets Vs Astros
Oct. 7 8:00 pm	Oct. 8 8:00 pm
Oct. 10 8:00 pm	Oct. 9 8:00 pm
Oct. 11 8:00 pm	Oct. 16 8:00 pm
Oct. 14 8:00 pm	
Oct. 15 8:00 pm	

For more information: **793-5345**

## OAC Worcester Polytechnic Institute Office of Academic Computing

appearing in Newspeak V.14 N.21 October 7, 1988

---

### HARD CARD TECH NOTE

Many of you have heard about or have seen information regarding "hard card" disk drives. The hard card is a form of hard disk drive, where the drive unit is mounted on a printed circuit card to be installed in one of the expansion slots of your PC. The drives are manufactured by several different companies, and come in sizes from 10 Meg and up. Since the hard card does not require any of the space normally used by either floppy or hard disk drives, it can be added to a system while still retaining either dual floppies or a floppy and a conventional hard disk.

A commonly asked question concerning the addition of a hard card to a system is whether it can be identified as drive "D." We have experimented with a card manufactured by I<sup>2</sup>, and having added it to a machine with a conventional hard disk, have found no problem installing the card as drive "D." The computer still boots from drive "C," but recognizes drive "D" as an additional storage device. This is a nice feature, especially for those who want to add disk space to a system already using a conventional hard drive.

### NEW KERMIT

The latest version of Kermit, v.2.29, has just arrived at OAC. The new version lacks many of the bugs of older versions and adds many new and useful features. We also have two documentation files, one for installation and use of Kermit, and one describing the differences between v.2.28 and the updated v.2.29. For a copy of Kermit and all associated files, bring a blank floppy to OAC during normal office hours.

### REDUCED PRICE OFFER

AT&T has notified WPI of another limited quantity price reduction on the PC 6300. We will be able to sell a dual-floppy configuration with 640K of memory, arithmetic coprocessor, monochrome

monitor, keyboard, and MS.DOS v.2.11 for \$1718.00. Quantities are limited and this offer is subject to change without notice. All full time students, faculty members, and staff are eligible to purchase one of these computers through the Office of Academic Computing (still located in Salisbury 106).

### UTILITY OF THE WEEK

Many applications programs allow access to files located in the current subdirectory only. Often, a situation arises where you wish to operate on a file that is not located in the current subdirectory. This week's utility, DPATH30, can help in this situation.

With DPATH30 installed, the program performs a path search for a desired file just like DOS searches the path when you execute a program. A path must be specified prior to the installation of DPATH30 using the DOS PATH command. When a program needs to access a file, it first looks in the current directory. If the file is not found, the directories in the defined path are searched in the order specified. If the file is not found, you get the normal "File not found" message, otherwise the file is opened and things proceed as normal. For a copy of DPATH30 and its documentation, stop by OAC.

### TUTORIAL SCHEDULE

The following tutorials are the last scheduled for term A-86, and will be held in Olin 205 from 4:00 to 5:00 PM:

- Tuesday 7 Turbo Graphics Toolbox
- Wednesday 8 GEM Draw

Handouts are available at the tutorials. A brief outline of material covered at each tutorial is available at OAC.

# SPORTS

## Union Tricks Hurt WPI

by Peter Yap  
Sports Editor

The nationally ranked Union Dutchmen, using some unexpected plays, beat the WPI Engineers 32-16. The loss dropped the Engineers' record to 2-2 and was their second consecutive loss (the first was against Tufts).

The Dutchmen entered the game with a 3-0 record and second on the national NCAA Division III coach's poll. Last season, Union compiled a 9-0 record, but lost to Ithaca 13-12 in a playoff game.

WPI, ranked 7th on the weekly New England Division II poll, last beat Union in 1977. WPI coach Bob Weiss said "We've got to play near errorless football to win this game."

WPI started the game with much enthusiasm, as the defense allowed the Dutchmen only three plays on their first drive. WPI's offense picked up where the defense left off

as Rick Farland ran 23 yards for the score on a keeper. The key play in the drive was a two yard pass to Steve Nolan on a fourth down play.

Union answered back by mixing up their running and passing game well and finished a 81 yard drive with a 12 yard run by Todd Walker.

With score tied 7-7, the WPI offense rumbled down the field on runs of 20 yards by John Wholey and 24 yards by Farland. The drive was completed by a 19 yard field goal by Steve Mango.

Union offense responded with a quick play that caught the WPI defense off guard. It appeared that the Dutchmen were in the middle of a player exchange and about to huddle, when they abruptly turned and got into formation. A quick count by Union quarterback Tim Valachovic led to an easy floating

pass to Cecil Bright running down the sideline for a touchdown.

WPI offense, helped by four Union penalties which included a third down roughing the passer penalty, scored on the spinning moves of Farland.

Union starting at its 50 yard line moved in for another score via a pass to a leaping George McAvoy in the end-zone.

As the Half was coming to a close, the Engineers marched down field to Union's 28 yard line. Farland's pass was intercepted at Union's one yard line and the half closed with Union leading 22-16.

In the second half, the Engineers seemed

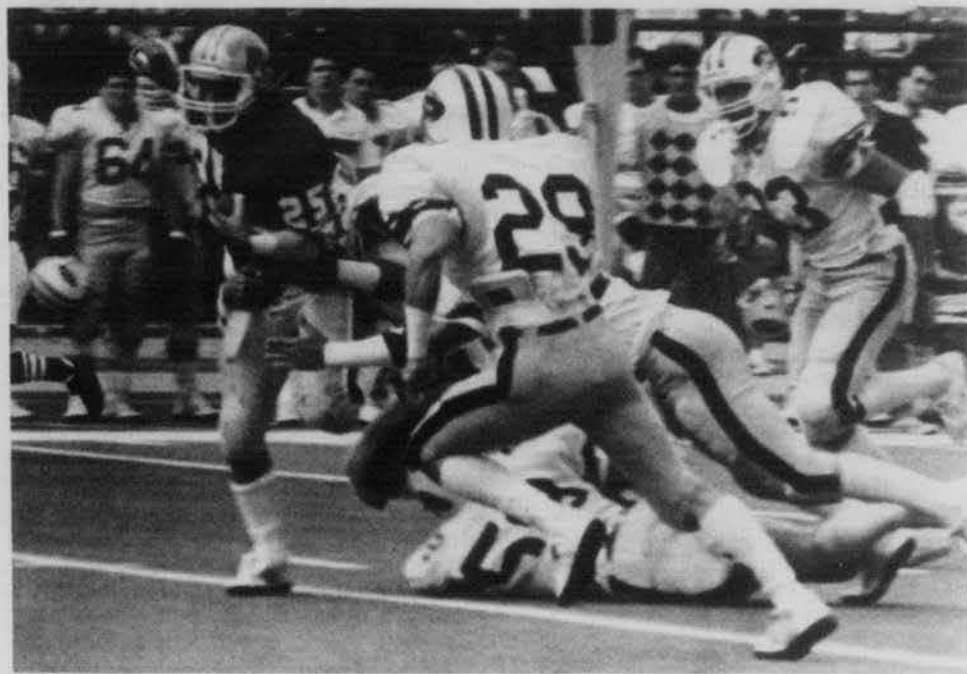
to have lost the intensity they had at the beginning of the game. Union appeared to be stopped on their first possession, but were helped by a 22 yard pass on a fourth and two punt fake. Walker ran in for the touchdown to make the score 29-16.

The game closed on a questionable Mango field goal attempt with three minutes left in the fourth quarter, as the game ended in 32-16 Union victory.

The Engineers travel to Norwich in hope of getting back on the winning track next week.



Place Kicker Mango goes (successfully) for field goal.



Running Back Bucci escapes from the evil horde.

PHOTO BY BOB SIMS, NEWSPEAK STAFF

PHOTO BY JOHN WHYTE, NEWSPEAK STAFF

W.P.I. vs. UNION (Oct. 4, 1986)

TEAM	1	2	3	4	FINAL
UNION	7	15	7	3	32
W.P.I.	10	6	0	0	16

Scoring by Quarter

- (1) W.P.I.- Farland 23 yd. run (Mango kick) (9:29)  
Union- Walker 11 yd. run (Anderson kick) (5:43)  
W.P.I.- Mango 19 yd. FG (0:13)
- (2) Union- Valachovic 48 yd. pass to Bright (Anderson kick) (13:41)  
W.P.I.- Farland 7 yd. run (kick missed) (9:21)  
Union- Valachovic 21 yd. pass to McAvoy (Valachovic run) (7:40)
- (3) Union- Walker 4 yd. run (Anderson kick) (10:14)
- (4) Union- Anderson 35 yd. FG (6:49)

A True Taste Sensation . . . ! Rex Reed N.Y. Times  
The Hit of the Year! Don't miss it! . . . Siskel & Ebert

What are these people talking about?  
**Gompies Place** (that's what)

Come in for Lunch 11 am — 2 pm  
or  
A late night snack 4 pm - 11 pm

**ALL  
NEW!**

- Gompies Speedy Pizza Delivery Service (Dorms only until 10:30 pm)
- Have you seen the new arrivals in Gompies Gameroom?
  - Birdie King • Asteroid • Commando
  - Electronic Football • Mr DO!
  - Have you had your **Calzone** Today?

**Call 793-5345**

## WPI X-Country Runs Over Anna Maria

by Brian Savilonis

The Women's X-country team finished the week with a record of 6-5. The squad finished the week by taking third place in the Women's Cross Country City Championship and beat Anna Maria.

The Women's Cross Country City Championship was held at Alden Labs in Holden. The final score was: 1. Holy Cross-22 2. Clark-60 3. WPI-60 4. Assumption-104 5. Anna Maria-120.

As expected, Division I Holy Cross was the strongest squad and took the first three places. WPI finished well as Lori DeBlois and Denise Crookes finished fourth and fifth, respectively, and freshman Robin Fontaine took eighth in her first college race. Patty Dube (19th) and Rachel Salus (25th) rounded out the Tech squad. Both Dube and Salus are freshman and neither of them is an experienced distance runners.

While Clark brought no stars, they managed to pack in their first five in the top 14 places; if this was a head-to-head meet WPI would have nipped Clark by one point. This meet brought WPI's record to 5-5.

The squad had a relatively easy 35-22 win over Anna Maria. The squad took the first four places: Lori DeBlois (17:49); a course record on the new Anna Maria course), Patty Dube (20:08), Rachel Salus (20:11), and Chris Kracunas (20:27). With Captain Denise Crookes out with a sprained ankle and two other team members missing; the most difficult part of the meet was to find a fifth finisher. That person was Laura Maclean, although getting a bit lost, Maclean ran her first x-country race to insure a victory for the Engineers'. To date, the team has been to four meets; never with the same personnel and has finished the minimum five each time.

## Outing Club Climbs Crow Hill

by Mark Hampson

This past weekend was an exciting one for the members of the WPI Outing Club. Fifteen members of the club were exposed to the challenges of technical rock climbing. The trip was lead by Mark Hampson, Vice President of the club.

The trip left shortly after 8 a.m. on Saturday for an area of Leomenster State Forest called Crow Hill. The cliffs are very popular among local climbers and College outing clubs. During the day we ran into several WPI graduates, including Peter Taber('83) a past President of the WPI Outing Club.

The trip was intended to introduce the members to the sport of rock climbing. The

day started with a short talk given by the trip leader about the equipment that the members would be using over the day. After that a climb and a rapel were set up. Many people found that climbing was not as simple as many of the people that were seen that day had made it look. For many, it was their first time rappelling and the idea of backing off of a cliff was not easily grasped, but in the end all of the fifteen attendees would find that going up was work but going down was fun.

At the end of the day, as we piled back into the cars to head back to WPI, the tired group was already making plans for future trips back to the rocks.

## Greek Corner

### ALPHA TAU OMEGA

Can you believe it -two consecutive weeks with an article in **Newspeak**?! This past week was an interesting one for the boys of ATO. Last Friday night we again celebrated our return to school with a the annual Cocktail Party. There was plenty of food and fun, a great tradition continues. We thank all who attended.

On the sporting side, our flag football team was defeated by the GAM on Wednesday night. It was a tough game and a tough loss. (Nice catch Skippy - better luck next time.) Thanks to those who supported us; we also think "pink" is a nice color for an organic compound. Thanks must go out to Dan Hoaglow for supplying the entire house with Field Box Seats for the entire Playoff and World Series games- thanks Dan!! What a guy! Congratulations to Jim Matthews on his recent "pinning" and also to Bryan Sheppick and Grag Woods for their endeavors in the "jewelry" industry. Harry - thanks for the Cognac. Till next time.

### DELTA PHI EPSILON

Thanks to Cathy & Eileen for the trip to Keene state this weekend... we had a blast!! we've got to have a "blt" of our own!! congratulations to all of our pledges: Maria, Cindy, Marianne, Julie, Chris, Deb, and Bridget. That was an excellent raid Wed. night, guys...but it won't happen again!! Did K.O. lose her shoes at Keene State? did those Keene Staters dig your I's?? we had a great time at the ATO cocktail party - thanks to the brothers.

Is Julie's dad gonna make us all some pants?? Marianne, eyes in the boat!! Bridgette, would you like some bread?? Cathy, who was that drunk?? must be another Garbo!! D-Phi-E is psyched to have an awesome pledge class. we know we're in for some adventures. who was Karen's gorgeous date - perhaps it was mspob!! does everyone have their pins on?? Cindy, did you take good care of Harry?? make sure he can breathe!! someone should teach Cathy how to open m&m's. Pledges, it's going to be awfully hot on Friday...do you have your tropical clothes??

Happy birthday to Carolyn (Monday)!!! Bridgette, don't call next time!! Deb, where did you sleep Friday night??????? happy birthday to Tracy on Thursday... now that you're legal, we'll be calling you...frequently.

### PHI SIGMA SIGMA

I know you're all wondering why there wasn't a Greek Corner last week, but I actually did submit one but it got lost in the mail system. (blame a computer, right??) So, everything that was supposed to be in last week will appear this week. Got that?? Now that I've cleared that up...

First of all, congratulations go to our four new (well, sort of new) pledges, Michelle Brideau, Laura Fries, Jennifer Lambert, and Minnette Levee. We're really psyched for all of you! Welcome!

Another congratulations to Alison Gotkin on winning the Skull Award over Homecoming Weekend!! You deserve it, good job! But wait, there's more... MORE con

gratulations are in order for Joanie on her recent candlepassing!! Way to go, kid! Whatever happened to that De-Candlepassing Party, guys?? Well, if we only knew what it meant...

A BIG thanks to all the sisters who helped out with the float, especially you, Khris! Magda, who designs your clothes?? It was great seeing all of our Awesome Alumni over that weekend. It's comforting to know that there is a better life after leaving this place! (and we all HOPE so!)

The party was great, Carlene, we hope you survived! Last week's Happy Hour was another good time, as usual! Remember to sell those buttons and get sponsors for the Bowl-a-Thon! (You'll make Beth and Magda so happy!)

Stay psyched Pledges because the fun (and ya gotta love that!) has just started...

### SIGMA PI

Tommy B., forgive me. I am missing a Chem lecture to write this. Skeptical Chem has never been so lacking in scholarly endeavors. The Canadian party was a success due largely to the many Canadian drafts present. A surprise visit from our classic comedian brought back some memories about the funny side of Canada. Congratulations to our Football team on its win on Sunday. Consolations to D-team volleyball which fought hard but had two wins this week. R.B.C. don't forget, meeting in the note hole Thursday, Oct. 9 (new date) at 3:30 p.m. Pledges, take care of your books as some have been known not to last 'till next years A-term. New committee formed # B.W.L.B. Meeting will be at 6:00 a.m., Oct. 10 in the Addams family room.

Cats are in, and as the Almighty Publicity Guy (4th Dimension Green) is known to astutely claim, cats are out. A rocking retreat on Saturday was more fun than most greeks should be allowed to have - but the graffiti party provided some help in diminishing the over zealous activities of many a dimensionalyte.

Yet again - though fall - the family tree has blossomed for Grandpa and his more than lucky relatives (no doubt six members of the family direct now live in the house.) Plus real brothers and step-grandsons from Yugoslavia, eight!! In the immortal words of Popeye, "Oh my Goshk!"

Remember King Leonardo and his faithful 1st Counselor Odie Cologne, beware of biggie rat and itchie brother.

Note to under-type-classmen: study hard and eat your wheaties - maybe someday you'll be a senior and earn multitudes of quave.

### TAU KAPPA EPSILON

Congratulations to our 24 new pledges: Ken Bromfield, Nick Larparelli, Joel Chachkes, Bob Dzwil, Matt Evens, Carlos Fuentes, Roland Gibson, Dave Giordano, Sean Hogan, Pete Kofod, Aaron Konwiser, Gordon Lupien, Shawn McGivern, Ken O'Connor, Rich Orsi, Steve Paradise, Phil Sergey, Dan Smith, Bob Song, Xavier Trevisani, Simon Underwood, Bob Ursillo, Jeff Weiss, Dave Woodilla. Good luck, and thanks for being as psyched on us as we ate on you! Much praise to Rush Chairman Brad

Howard on an excellent job and to the whole house for a great Rush.

Special thanks to Father Lee Guertin for his extra special effort on our second-prize winning float and for a phenomenal display of blind driving in the Cherokee.

### THETA CHI

The brothers of Theta Chi would like to announce the new pledge class officers:

President: Mike Donahue  
Vice-President: Harald Lucas  
Secretary: Chris Gormly  
Treasurer: Chris Rett  
Strike Master: Brian Berg

There have been no successful raids yet. Pledges, get on the ball.

Intramural results for the last two weeks are: A-team volleyball wins against ATO and SAE, Budmen win over Hackfeld, and the undefeated B-team victorious over HSA and Daniels third. Also, the water polo team is holding its own with a 2-2 record. Look for theta chi "fatties" putting up a good fight in the upcoming cross country meet.

The Theta Chi "Run for Your Life" to benefit leukemia is Nov. 1st and 2nd. 40 active and alumni members will be running a relay across Massachusetts as part of our first big philanthropy project.

Amazing. A whole Theta Chi Greek Corner and no exclamation points! (oops)

One last thing, we would like to wish Kyle Brenner a speedy recovery.

## Greek of the Week

The WPI PanHel Association would like to congratulate Edie Mickey of Delta Phi Epsilon as this week's Greek of the Week. Edie is a EE major in the class of 1988.

Edie serves as the PanHel delegate for Delta Phi Epsilon this year and was the social chairman last year. In addition to working for the sorority, Edie is also active in Soccomm as the Gompei's Place Entertainment Committee chairperson.

She played on the WPI Field Hockey team during her freshman and soph-more years and has participated in Spring Track as well as in WPI Women's Chorale since her freshman year. Last year, she was awarded a Digital scholarship as an outstanding woman student.

Edie is a very busy and versatile student who has contributed to the WPI campus for the past three years. Congratulations, Edie!!

## Goat's Head Double-Header: Salem 66, Pat On The Back

by Rob Everton

Saturday, September 27, two hot Boston bands visited WPI in an entertaining show that showed hope for the ailing, non-alcoholic pub.

The first act, Pat On The Back, (P.O.T.B.) was a fresh group from Boston who have been called one of the best new bands in the area. They took to the stage appearing a little apprehensive of a tech school crowd, but as people sauntered in, the music loosened and flowed while the crowd got more and more into the sound. Consisting of guitar/vocals, bass, soprano & alto saxophone, and drums, they played a barrage of new rock blended with a powerful jazz fusion style. After playing several songs from a tape they were selling at the show, they showed off three catchy new songs with a few people dancing on the floor. By the end of the set, P.O.T.B.'s talent was showing strongly, and the crowd decided they hadn't heard enough. The enthusiastic crowd persuaded them to play an encore, consisting of a 15 minute jazz improvisation. Based on an energetic bass header, the encore exploded with solos from all four members, and the band amazed the crowd with musical precision.

The headline band, Salem 66, came sailing to WPI proudly wielding the credits of an album and an E.P. release. They have been given air time on numerous major radio stations and the group R.E.M. called them one of their favorite bands. Here at WPI, however, the crowd was somewhat less impressed. After the fury of P.O.T.B., Salem 66 took the stage with a feminine aggressiveness bordering on arrogance, and proceeded to squeeze out the songs that brought them to their level of fame. The songs on vinyl sound interesting and enjoyable, but something was lost in the live performance. The crowd was anxious for a good follow up to the opening act so they stayed attentive through the first set, but when the band broke for a short rest, the crowd dwindled. Salem 66 had an interesting arrangement, consisting of female guitar/vocalist, bass, and drums, and a guy on guitar who looked like someone pulled right out of the sixties. But the female lead didn't add to the show by bobbing her head and eyeballs like she had popped a couple of quaaludes. Overall, Salem 66 put on a decent show, but need to work on their stage presence and energy to keep a college crowd happy.

The only thing really disappointing to me wasn't that Salem 66 didn't play to their (continued on page 8)

## STUDENT SPECIAL

# SANREMO'S

## MENS HAIRSTYLING SALON

# \$10.00

 with Student I.D.

### WASH - CUT - BLOWDRY

Our Reg. \$13.50

## 755-5852

Appt. or Walk In

## 237 Park Ave Worcester, MA

(Corner of Elm & Park  
Next to Parkview Towers)

## United Parcel Service needs Loaders & Unloaders Part Time

Join your classmates and earn  
\$8.00 an hour

See U.P.S. Representative  
October 8  
10 AM - 2 PM  
In Wedge

Shifts: 5:30 PM - 10:30 PM  
10:30 PM - 3:00 AM  
3:00 AM - 8:00 AM

## ALL STUDENTS PARTICIPATING IN COMPETITIVE SPORTS VARSITY & CLUB 1986 - 1987

### PHYSICAL EXAMINATIONS ARE REQUIRED

Freshmen and Transfer students participating in WPI competitive sports must have a comprehensive physical conducted this year, 1986-1987, by the WPI Physicians. This physical examination will cover four years of participation with an annual update.

Upper class students who received a physical from the WPI physicians must update that examination with the athletic trainer in the Alumni Gym *annually*.

Failure to report for a physical examination at the appropriate time will cause the student to be ineligible for participation.

<p>7 October 1986 Tuesday 6:30 PM Squad Room - Harrington Auditorium</p>	<p>Wrestling, Basketball (M &amp; W)</p>
<p>9 October 1985 Thursday 6:30 PM Squad Room - Harrington Auditorium</p>	<p>Ice Hockey, Volleyball (M), Swimming, Track, Fencing, Ski Team, Lacrosse</p>

# CLASSIFIEDS

SENIORS, CO-OP, learn how to be an effective job interviewee on Wed., 10/8, 4:30 p.m., or Thurs., 10/9, 7:00 p.m., Kinnicutt Hall.

STUDENT AMBASSADOR ADMISSIONS PROGRAM - Anyone interested in visiting their high school over term break should stop by the admissions office. Packets will be available Monday, October 13. Contact Johnna Duval X5286.

\$\$\$EARN MONEY!!! CAMPUS-WIDE ASSET INVENTORY AND DATA INPUT. WORK TO START OCTOBER 15 (OR OCTOBER 29 IF YOU WON'T BE HERE OVER BREAK) AND LAST THROUGH B TERM... SOME POSITIONS LONGER. CALL MARY SHALIA, BUSINESS OFFICE, 793-5577.

End of Term Pool Hours - 10/6/86 - 10/15/86  
Monday - Friday - 11:30 a.m. - 2:30 p.m.  
Saturday - 9:00 a.m. - 12:00 p.m.  
Sunday - 1:00 p.m. - 5:00 p.m.  
Pool hours for the fall recess are questionable at this time.

K2 "Can I kiss you goodnight?" VERY nice.

ME's Don't forget to get your coffee and donuts from ASME on Thursday, from 8:30-11:00 a.m. outside HL109.

SPAM... SPAM... SPAM... Spam... spam - Was that size double A or triple A?

Come on MOTORCYCLISTS!!! I know you're out there, you wimps, and you can't hide! Write to Box 1611 to help get a motorcycling club started, or DIE!!

FOR SALE: Yamaha A500 AMP. 75 Watts per channel. Good condition. Randy Fulton 757-9308.

DO YOU NEED A JOB? NEWPORT CREAMERY IS LOOKING FOR RESPONSIBLE WAITERS AND WAITRESSES. APPLY AT NEWPORT CREAMERY, 14 PARK AVENUE, WORCESTER, OR TELEPHONE AT 799-7335.

WANT YOUR PAYCHECK ON THURSDAY - THEN MAKE SURE YOUR TIME CARDS ARE SIGNED BY THIS FRIDAY, OCT. 10 - COACH MASSUCCO

The HORROR, the HORROR

Dirk...STUD FOR HIRE!

Now serving #15 or is it #73 or #60 or #82...

HERB - Thanks for the pizza and the friendship! - STANLEY

Hey pledges - what follows the bombing by Pearl Harbors? Very Happy Pledges that's what!

D.J. - Beware... you're marked. - Your Best Friend

Yo Babs! What did YOU do Friday night?

'90 men - look out for L.N.! (Is that better?) When you least expect it, expect it! Save your amphibian from vindictive little sisters! Where are your keys?

Hey Gabe, It's LEATHER and Lace, not HEATHER!

Better get those interviews girls, I hear the questions are really hard this year.

Become an RA and find out what's so special about mack's friends???

Happy Birthday, Jeffie G.! Why haven't you been partying for so long??? Friends from Riley.

Yo Maggot! How are you doing today?

Where is the hamkey

J - Pink Floyd and a kiss on the nose - what else is there?

Derk, Don't be scooping when the ABOMIC DOMB hits because you might just have to CUCK AND DOVER! Love Always, Jake & Elwood

"I think you'd better pull the van over now!"

## HOW TO PRESS ONE'S FACE AGAINST A PANE OF GLASS

The fifth in a series reasonably concerned with educating the reader on subjects that he or she might otherwise pass through life knowing little about.

Photos and captions by Jon Waples



Assuming the basic knowledge on face pressing, including the lateral nose bends, we shall skip right to the intermediate level. Joe demonstrates a porcine nose bend with double lip stretch and tongue extension.



Rob demonstrates his concept of what man would look like if he had dual suction cup nosehairs.



Props are important for the budding face presser. Joe shows us a thirty degree "face" shift. The theme is suicide with children's toys.



On the more advanced level, Rob and Joe give us their version of large tongued blowfish.

## Police Log

### Friday September 26

11:35 PM - Received complaint about students walking along Dean St. Students were very loud. Also in possession of open containers. Sergeant advises no problem at Dean St. area. Students playing football outside, but everything is under control.

11:51 PM - Received complaint about loud noise and drinking on Wachusett and Institute Rd. Sergeants indicate party breaking up.

Sergeant also reports stopping several students who were in violation of minors-in-possession laws. Individuals were requested to dump their alcohol.

### Saturday September 27

1:17 AM - Sergeant to fraternity regarding a report of a fight at that location. Sergeant reports fight had broken up prior to his arrival. Reports advising fraternity brothers to keep the noise down. Two WPD cruisers had also arrived on the scene.

9:30 PM - Food service calls to report that their van is missing. Officers out to investigate.

### Sunday September 28

12:15 AM - Fraternity members call station to report suspicious person walking around the neighborhood. Officers respond, unable to locate anyone.

12:30 PM - Student calls regarding attempted theft of a vehicle on Institute Rd. Student was advised to contact WPD.

### Monday September 29

3:42 PM - Officer out to investigate loud music coming from residence hall. Residence hall student advised to keep music down and remove speakers from window.

7:30 PM - Student reports that his automobile was found open on Institute Rd. Nothing was taken from the vehicle.

### Tuesday September 30

1:20 AM - SNAP reports someone in

residence hall throwing things out the window. Officers respond, unable to locate any problem.

12:42 PM - Peter Pan bus driver into station to report that he had just hit a vehicle on the corner of Schussler and Institute Rd.

9:50 PM - Officer reports minor motor vehicle accident on Humbolt Rd. WPD notified.

10:25 PM - WPD calls reporting an accident at Dean and Institute Rd. Requested WPI police to check for personal injury. Officer reports no personal injury. Victims exchange papers. WPD notified.

11:50 PM - Received complaint about noise at fraternity. Officer reports fraternity members will quiet down.

### Wednesday October 1

1:04 AM - Officer reports motor vehicle on Institute Rd. has punched out ignition. Car registered to mother of WPI student.

3:00 AM - Resident Advisor calls requesting assistance regarding a student who is ill. Worcester ambulance notified. Indicates student had too much to drink. Student indicated he had been drinking at a fraternity. Student advised to sleep it off. Officer reports speaking with president of fraternity regarding the incident.

11:05 PM - RA calls to report there is a man dressed in a woman's bathing suit in the residence hall. Officer unable to locate individual.

11:28 PM - Citizen calls to report excessive noise from fraternity. Officer responds. Indicated fraternity members will quiet down.

### Thursday October 2

12:18 PM - Mechanical Engineering office calls reporting that someone had tried to break into one of the offices the previous night. Obvious signs of attempted entry, although it was noted that entry was not gained.

## What's Happening

### Tuesday, October 7, 1986

7:00 pm - Cinematech Film Series "The Third Man," Alden Hall, free

8:00 pm - Coffeeshouse, "Michael Jerling," Gompei's Place, \$1.00

### Wednesday, October 8, 1986

4:30 pm - "Effective Job Interviewing," Student Counseling Center Seminar, Kinnicutt Hall, free

### Thursday, October 9, 1986

8:30 am - 11:00 am - ASME Coffee and Doughnuts, outside HL109

7:00 pm - "Effective Job Interviewing," Student Counseling Center Seminar, Kinnicutt Hall, free

### Sunday, October 12, 1986

3:00 pm - Vocal Sufficiency performed by Edie Mickey, Janet Earle Room, Alden Hall, public invited

### Tuesday, October 14, 1986

4:00 pm - Sufficiency Performance in African Percussion by Robert Provosr, Janet Earle Room, Alden Hall, public invited

## ... Band

(continued from page 4)

whole group in and exuberant finish. The crowd, once again was really satisfied and I even saw some people going up for autographs.

Once again the show was great. Once again the tables were neatly set, Gompei's immaculate and Lens and Lights extraordinary. Once again the popcorn was popped, the ovens were begging for pizza to be cooked and the bartenders were ready. Once again the event was heavily publicized. And unfortunately once again the attendance was low....

This surpasses the understanding of all Soccom members. The Pub was intensely renovated to become Gompei's Place. It is

## ... Goat's

(continued from page 6)

potential, but that they didn't have the courtesy to watch the opening band perform. I have rarely seen a music show with anything less than professional bands where the bands were so pompous that they can't take the time to see who was warming up for them. P.O.T.B. was put off by it, but still

still being renovated. A new game room and a lounge area should be set in the near future... and still nobody shows up. The pizza is probably the best and the cheapest around. And very few order any. Hundreds of cups and glasses were acquired and nobody drinks.

What is wrong with the WPI students? We are paying for these events. Everything was there at Gompei's to make it great, everything but the crowd. I really wonder if the Student Body realizes what it is missing by blowing off these events. Anyways, congratulations to those who showed up. It was a pretty smart move.

stayed to watch Salem's first set. Nevertheless, the show was a success with a full crowd in the basement of Riley Hall.

Hopefully, Gompei's Place will continue to bring hot new talent to campus and Soccom will remain concerned with the bands' sound rather than the number of albums they have out.

## ATTENTION FRESHMAN!! WIN A FREE TRIP TO LONDON!!

As part of the **INAUGURATION OF THE NEW WPI LONDON PROJECT CENTER** next April, a generous donor to WPI has provided funds to enable **TWO MEMBERS OF THE CLASS OF '90** to attend the Inauguration Banquet. This formal Banquet will take place the evening of Monday, April 13, 1987, at a Guildhall overlooking the Thames River. The Inauguration Address will be delivered by Baroness Platt, an engineer who is also a member of the House of Lords.

The anonymous donor of the travel funds stipulates the following selection procedure for selecting these two Representatives of the Class of '90 to participate:

1. **APPLICANTS** must write a 500 word essay on "The Role of International Study in the Education of Professionals." One

copy of this essay must be submitted to Professor Schachterle in the Project Center by 4 pm, Friday, November 7.

2. Project Center staff will screen all written essays, and select ten **SEMI-FINALISTS** who will make brief oral presentations of their essays before Thanksgiving. From this pool five **FINALISTS** will be chosen.
3. The essays of the five finalists will be transmitted to the British Embassy in Washington for final selection of **TWO REPRESENTATIVES OF THE CLASS OF '90** who will present their class greetings at the formal banquet in London. They will also write a report of the Inauguration for publication in **Newspeak**.

The donor will cover travel and lodging costs, with an allowance for food, and sightseeing, for the two class representatives in London from Friday, April 10, to Wednesday, April 15.