

Urban Intervention Corps: Planting the Seeds of Collaboration

Kristen Antunes
Taylor Bergeron
Alex Johnson
Dante Mauriello
Partnered with:

GROWING  PATHWAYS

Development and climate change are direct threats to the city of Copenhagen.



An aerial view of a modern urban park. The park features a mix of greenery, including trees and low-lying plants, interspersed with paved walkways and benches. In the background, there are brick buildings and a street with parked cars and bicycles. The scene is captured from a high angle, showing the layout of the park and its integration with the surrounding urban environment.

Climate change and development make it increasingly important to produce multipurpose greenspaces.

Through collaborative greenspace development, multipurpose sites are produced.

Effects of climate change and development can be mitigated through multipurpose greenspaces.



Multipurpose greenspaces generate a variety of benefits.



Societal Benefits

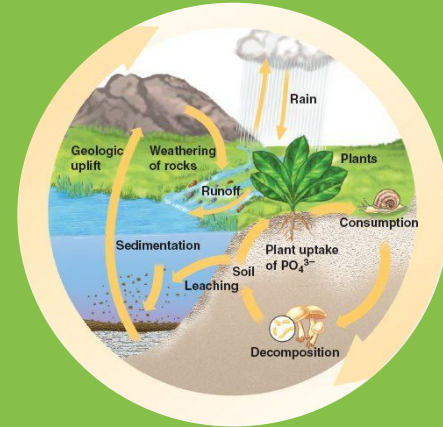


Environmental Benefits

Societal Benefits



Environmental Benefits



There are three main stakeholder groups in greenspace development.



**Community
Outreach
Organizations**



**Environmental
Scientists**



**Planning &
Development
Experts**

Stakeholders value different benefits for greenspaces.



- Community Involvement
- Social Interaction
- Mental Health



- Support Native Species
- Climate Adaptation
- Biodiversity



- Aesthetic Appeal
- Climate Adaptation
- Community Involvement

When stakeholders do not share their perspectives, multipurpose greenspaces are not produced.





Growing Pathways recognizes the importance of multipurpose greenspaces and collaboration between stakeholders.



“We create nature cities and bind innovation with mapping and strategy” -*Growing Pathways Website*

A lush green park scene with a large green rounded rectangle overlaid in the center containing text. The background shows a well-maintained lawn, dense trees, and a path leading towards a body of water.

Our goal is to provide a **platform** for Growing Pathways to **promote collaboration** between greenspace stakeholders.

Planting The Seeds of Collaboration



Objective 1: Determine the principles by which stakeholders develop different types of greenspaces

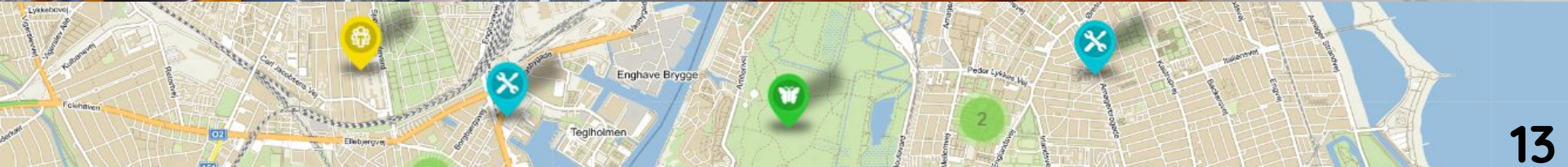
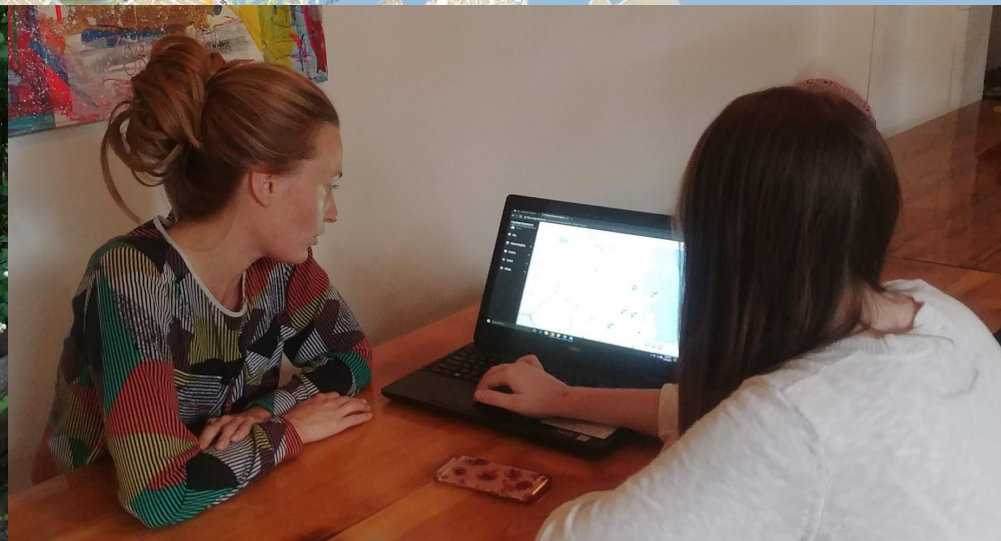


Objective 2: Analyze interdisciplinary collaboration through the construction and use of workflow diagrams

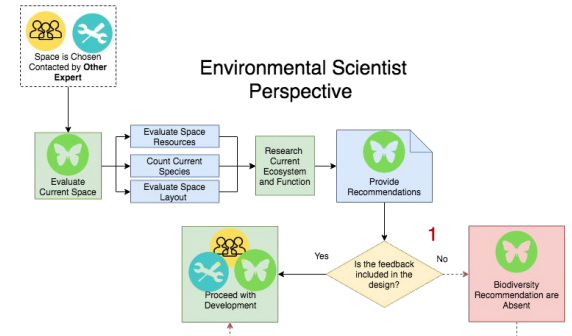
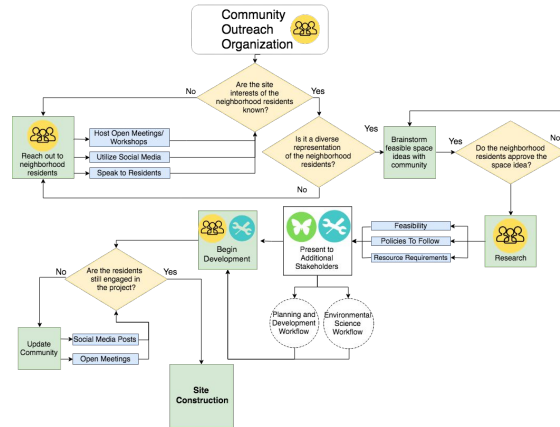
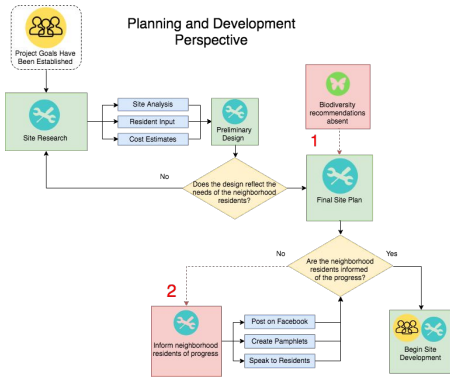


Objective 3: Develop a social mapping platform to facilitate interdisciplinary collaboration

Interviews provided site specific perspectives and collaboration information.



Workflow diagrams allowed us to identify problems in collaboration processes.



Problems identified in collaboration processes:

Difference in driving values

Stakeholders not included in projects at all

Stakeholders included too late in the project

No communication between stakeholders
involved in the same project

Case studies demonstrate the impact of collaboration in physical spaces.

Mozarts Plads

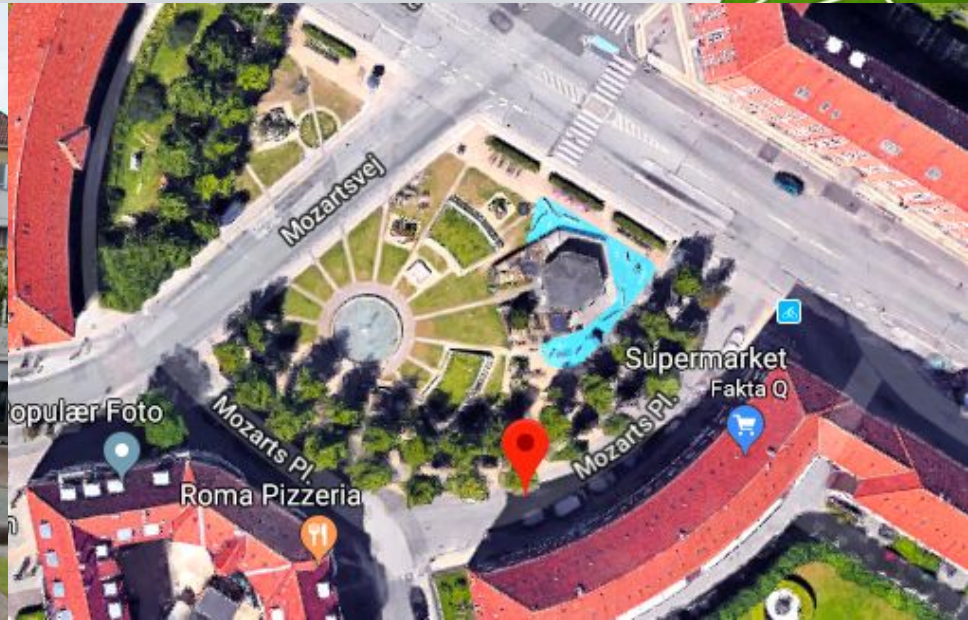
Byparken



Mozarts Plads:

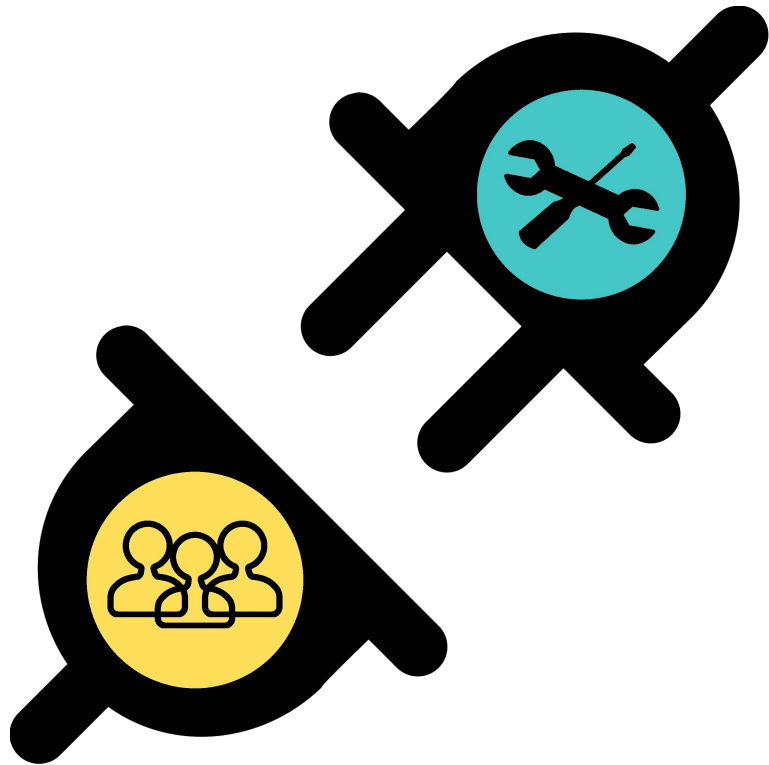
A Collaborative Disaster

Case Study: Mozart Plads



A small park located in Central Sydhavnen driven by planners and developers.

Resident input was not thoroughly represented because a community outreach organization was not utilized.



“I just went out
and talked to
them myself”

- Landscape Architect who
worked on Mozart Plads

Excluding environmental scientists
limited ecosystem benefits.



Project drivers did not utilize other stakeholders, producing limited benefits to the sites.



“We didn’t have the connections”

- Landscape architect who worked on Mozarts Plads



Byparken: A Model for Collaboration



Case Study: Byparken



A **large park** located in Ørestad which provides **aesthetic appeal**, **biodiversity features**, and **community involvement**.

Resident involvement during the development process promotes ownership.



“Citizens can join the town board and can have direct influence in the vision of projects”
- Member of Ørestad Grundejerforening

The inclusion of environmental scientists promoted biodiversity benefits.



“Plant decomposition provides essential nutrients for the growth of new organisms”
- Biodiversity Expert



Football Pitch

Fruit Garden

Biodiversity

Volleyball Court

Stakeholder collaboration produces multipurpose greenspaces.

Mapotic will help facilitate online collaboration between stakeholders.





Copenhagen Greenspaces

Science, nature and education

👍 Like 0 | ➦ Share

📍 22 Places | ❤️ 8 Followers

✓ Following

U Urban C. ⌵

U What's new, Urban? Post

U 📌 Pinned post
Urban C. posted

Hello! Welcome to our Mapotic, Copenhagen Greenspaces! Check out our quick-start guide for some basic information on how to get started using the platform!

https://drive.google.com/file/d/1rNmKs-oaXUEdQ3tqpiomns_PWRliq-Fu/view?usp=sharing

6 days ago | 🗨️ 0 | ❤️ 0 | ➦

U Add a comment

Copenhagen Greenspace map

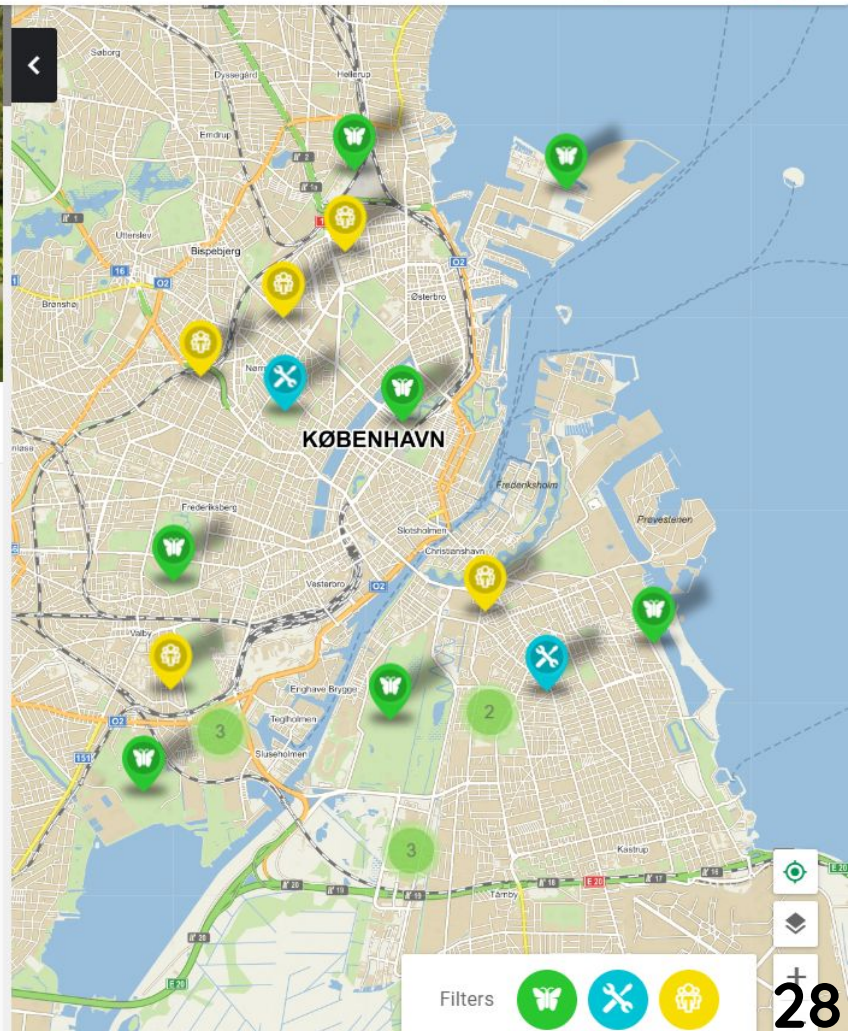
Our team, the Urban Intervention Corps from WPI, began mapping current and potential greenspaces around Copenhagen. We would love your input too.

[Read More](#)

8 People [+ Invite Friend](#)

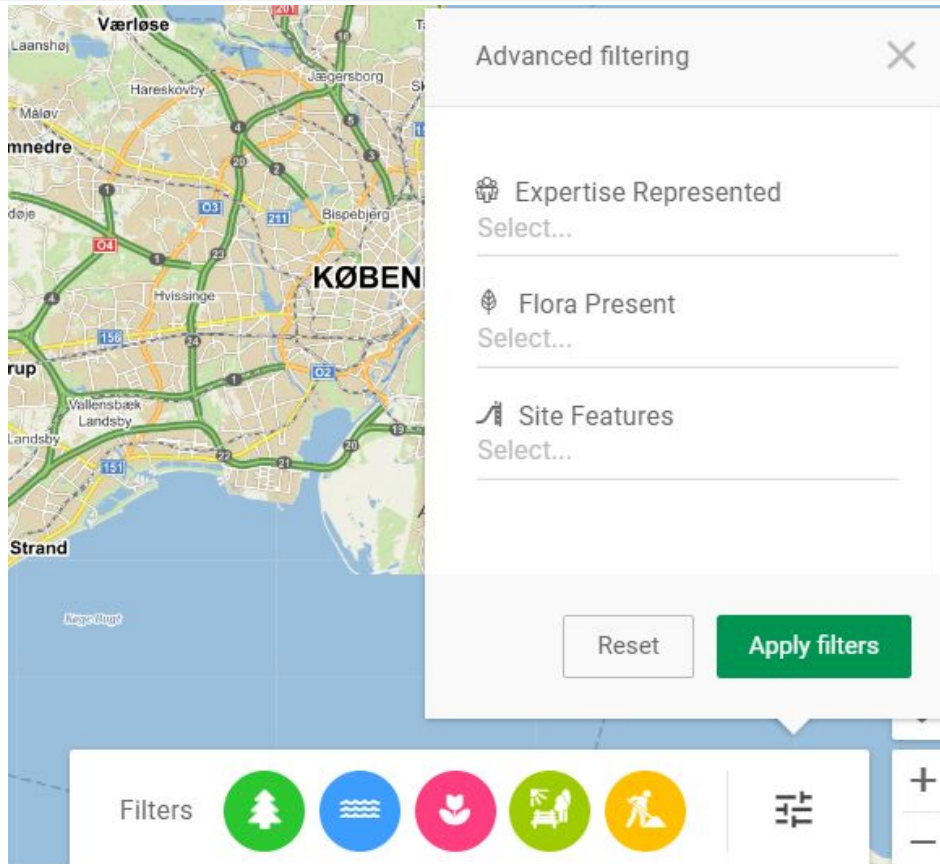
👤 Oleg K. Follower

U Urban C. Follower



Filters   

New Feature: Advanced Filtering



The screenshot displays a map of Copenhagen with an 'Advanced filtering' panel overlaid. The panel includes three filter categories: 'Expertise Represented', 'Flora Present', and 'Site Features', each with a 'Select...' dropdown. At the bottom of the panel are 'Reset' and 'Apply filters' buttons. Below the map, a 'Filters' bar shows five active filter icons: a green tree, a blue waterway, a pink flower, a green pocket park, and a yellow potential site icon.

Legend:



Large Park



Waterway



Urban Garden



Pocket Park



Potential Sites

Mapotic cannot replace the face-to-face interaction that must occur in greenspace development.



Recommendations

1

Form the
Project Team

Facilitate
Collaboration
Through Mapotic

2

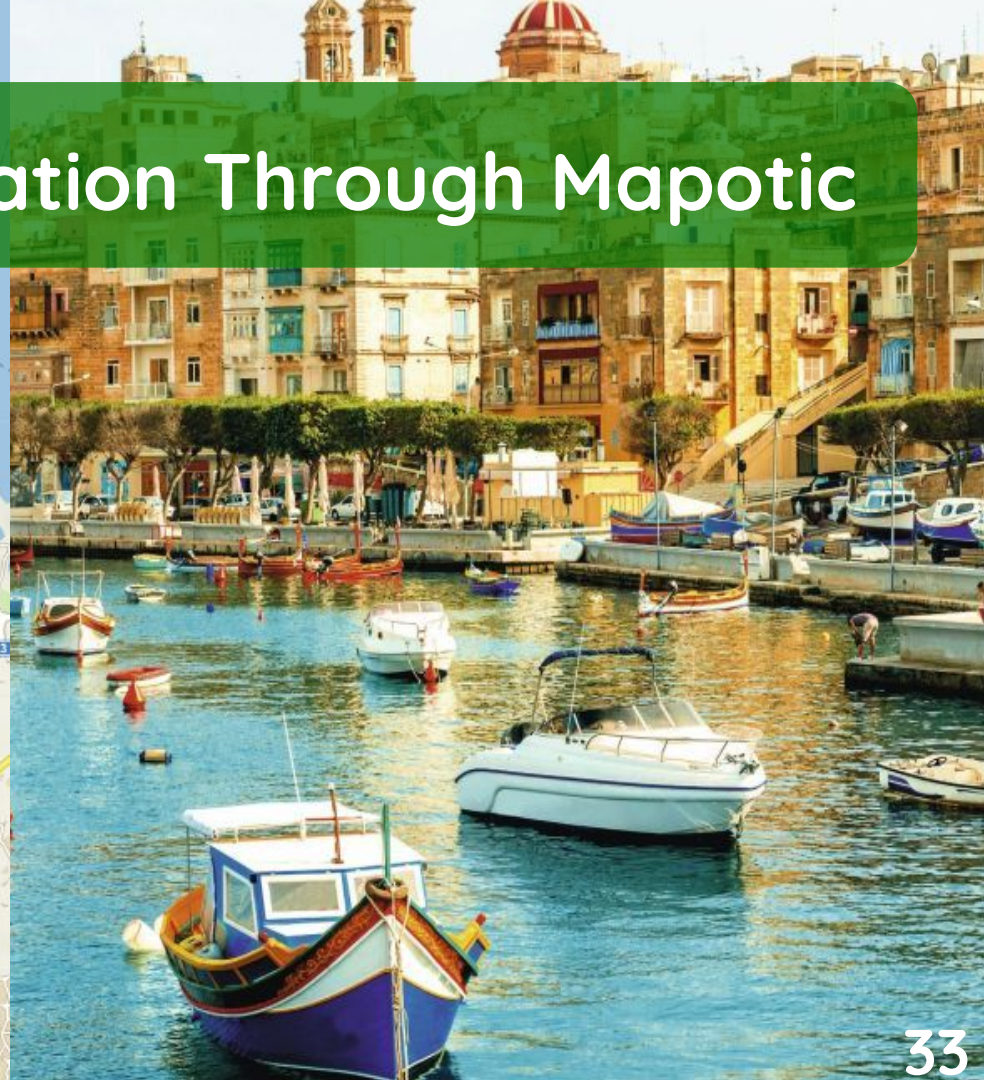
1 Form the Project Team



“Form project teams at the start of a project to ensure that different perspectives are included throughout the entire process.”

*-Member of the
Områdefornyelsen
Frederiksberg*

2 Facilitate Collaboration Through Mapotic



Acknowledgements

Thank you to:

- Our advisors: **Holly Ault** and **Katherine Foo**
- Our Sponsor: **Oleg Koefoed** and **Growing Pathways**
- And everyone else who helped us with our project!

A green textured background on the left side of the slide, featuring several white lines that intersect to form a complex geometric pattern of triangles and quadrilaterals. The lines are white and vary in orientation, creating a dynamic and abstract design.

Questions?