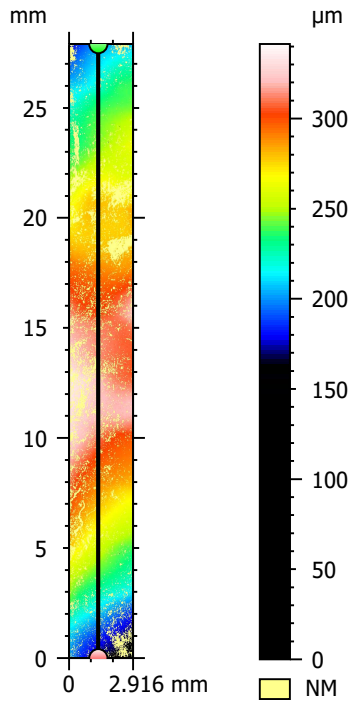
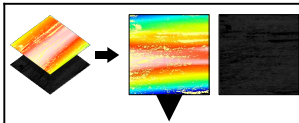


Information	
Channel	Image channel



Information	
Channel	Topography channel

Control, Trial 1

ISO 21920 - Roughness (S-L)

F: [Workflow] Form removed (LS-poly 2)

S-filter (λ_s): Gaussian, 2.5 μm

L-filter (λ_c): Gaussian, 0.5 mm

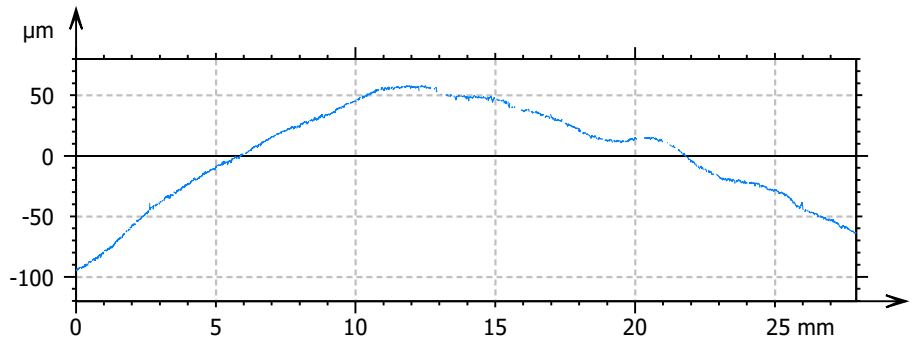
Evaluation length: All λ_c (55)

Height parameters

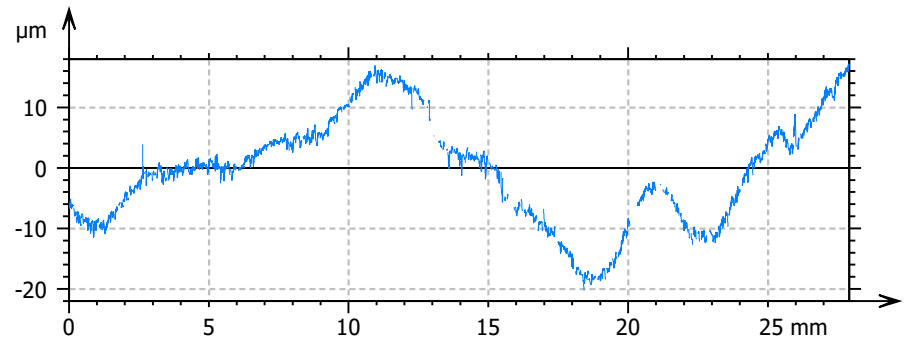
Rq	0.5978	μm	
Rsk	-0.05059		
Rku	6.550		
Rt	7.952	μm	
Rpt	4.786	μm	Max of values on: Al...
Rp	1.311	μm	Average of values o...
Rvt	3.166	μm	Max of values on: Al...
Rv	1.520	μm	Average of values o...
Rzx	7.952	μm	Max of values on: Al...
Rz	2.831	μm	Average of values o...
Ra	0.4482	μm	

Information

The studiable contains non-measured points. Th...

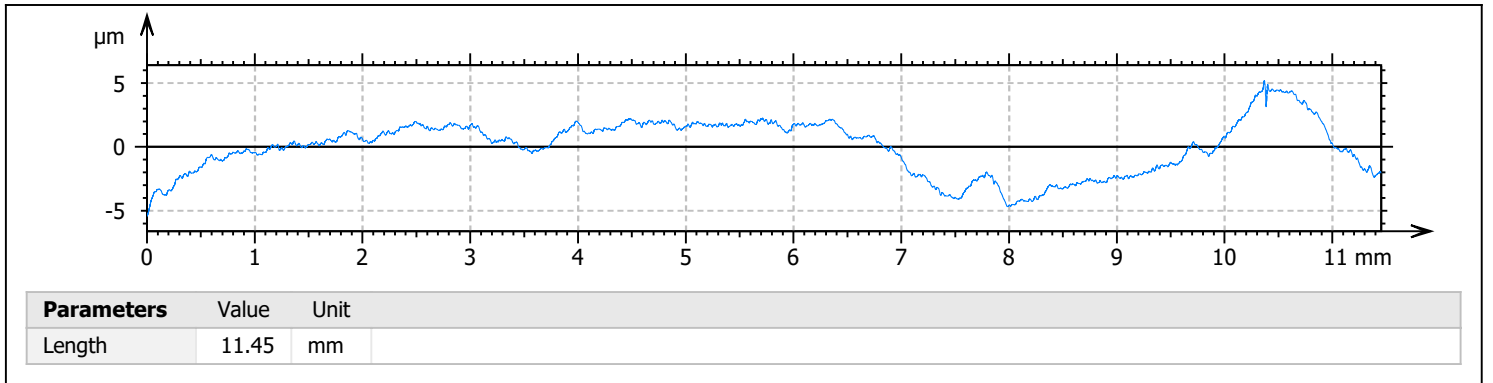
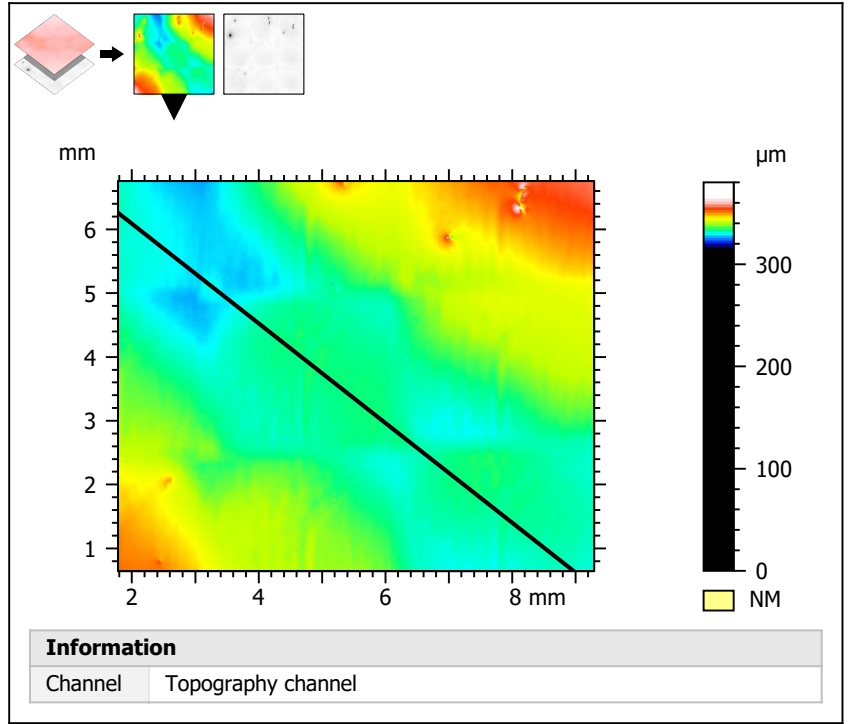
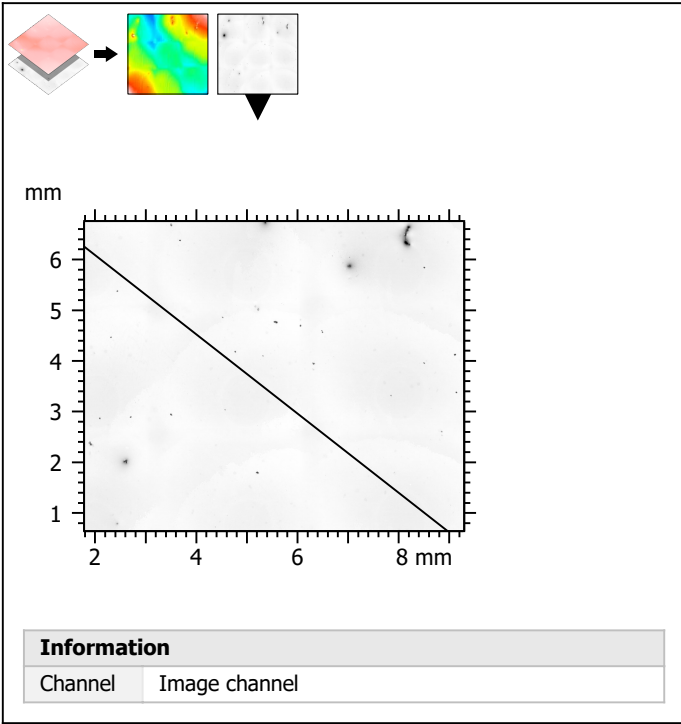


Parameters	Value	Unit
Length	27.90	mm



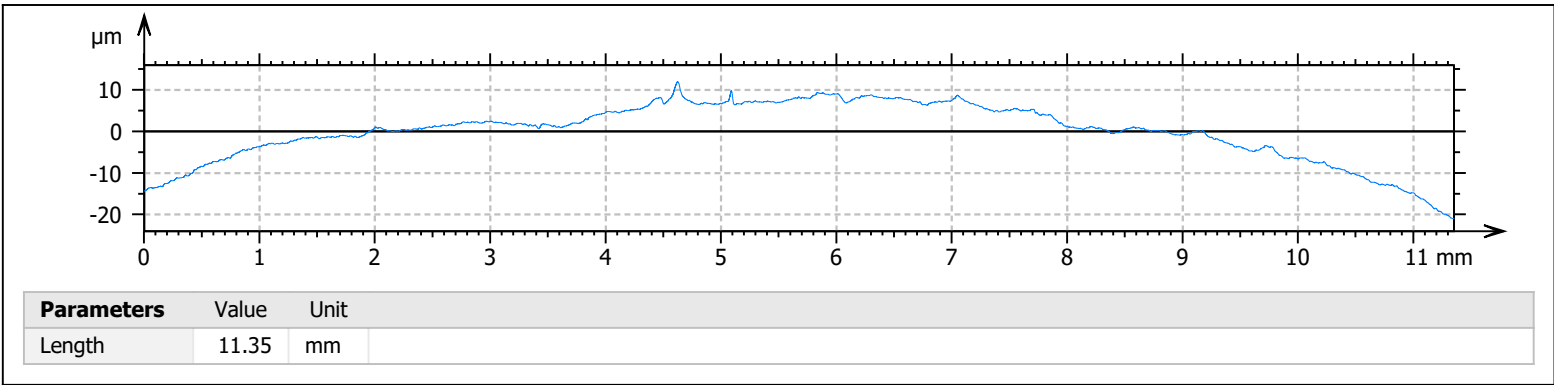
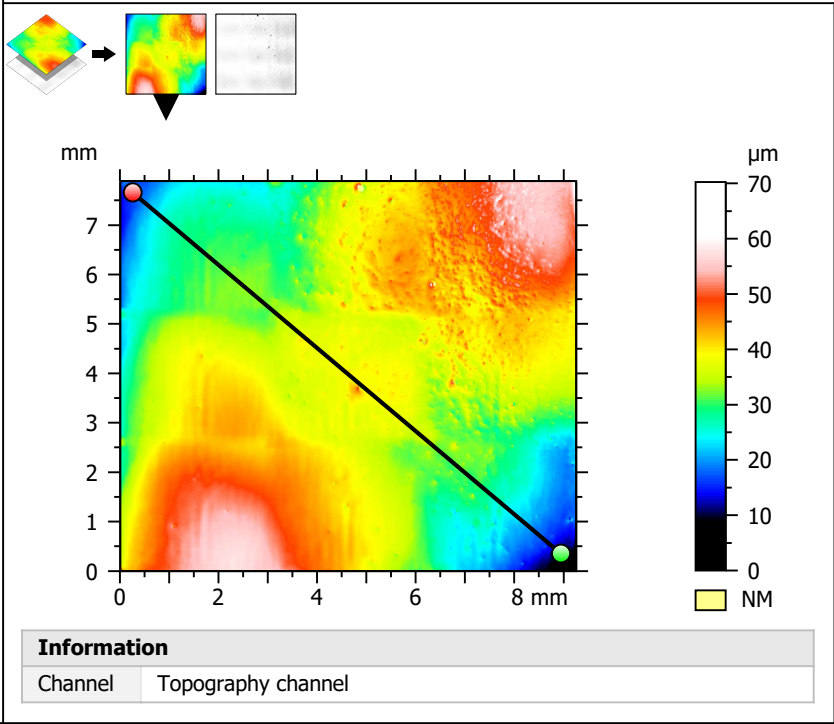
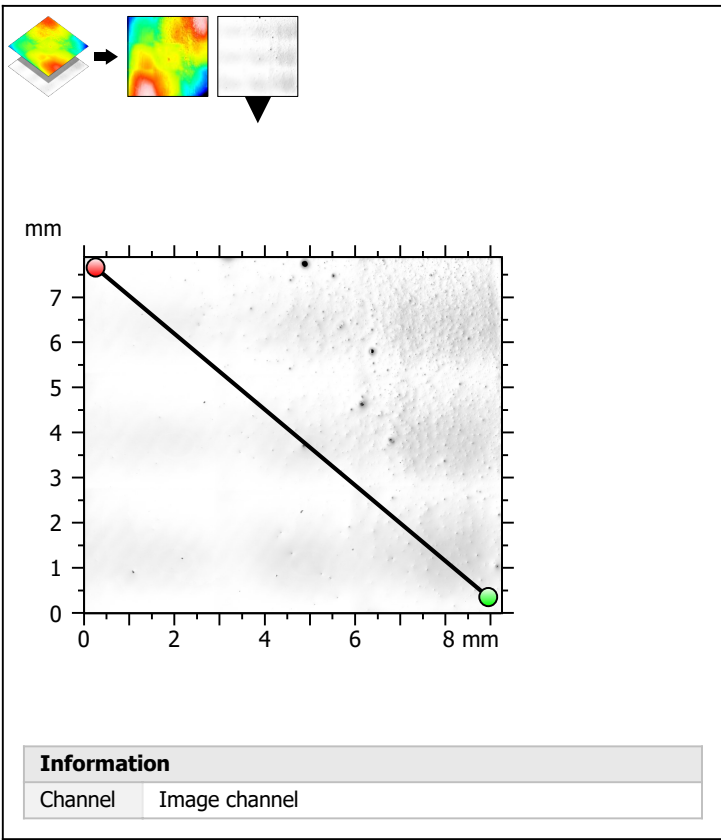
Parameters	Value	Unit
Length	27.90	mm

Control, Trial 2

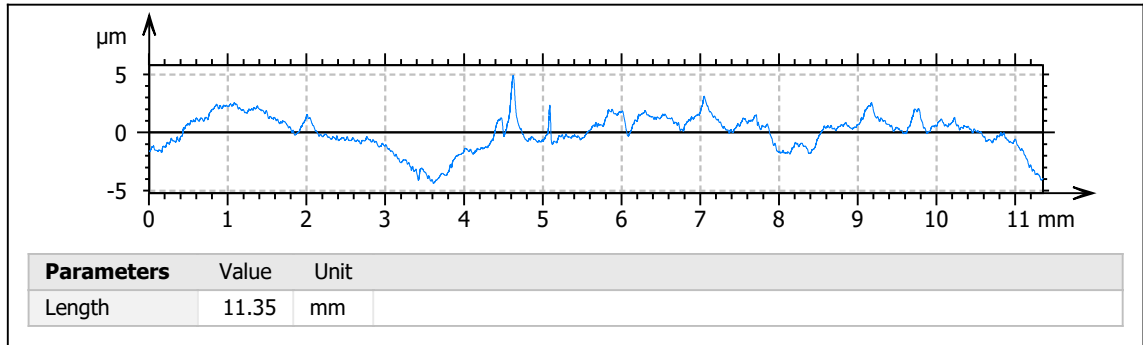


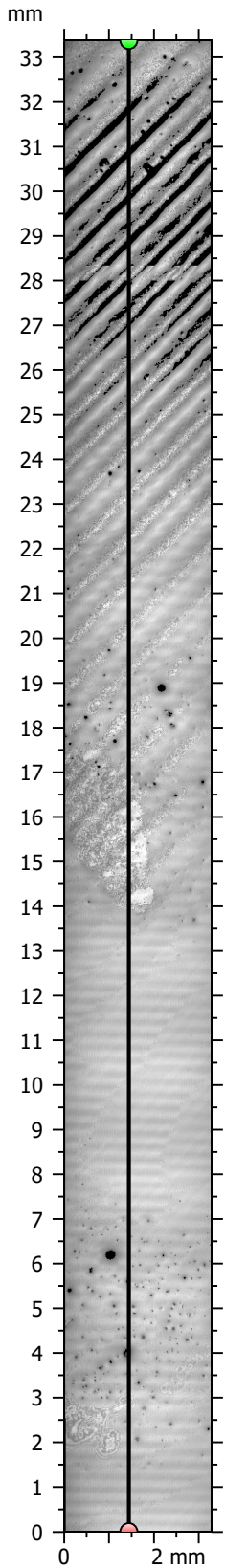
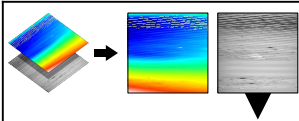
ISO 21920 - Roughness (S-L)			
<i>F: None</i>			
<i>S-filter (λ_s): Gaussian, 2.5 μm</i>			
<i>L-filter (λ_c): Gaussian, 0.5 mm</i>			
<i>Evaluation length: All λ_c (22)</i>			
Height parameters			
Rq	0.2144	μm	
Rsk	-0.2619		
Rku	5.479		
Rt	2.456	μm	
Rpt	1.030	μm	<i>Max of values on: All λ_c (22)</i>
Rp	0.4311	μm	<i>Average of values on: All λ_c (22)</i>
Rvt	1.426	μm	<i>Max of values on: All λ_c (22)</i>
Rv	0.4628	μm	<i>Average of values on: All λ_c (22)</i>
Rzx	2.456	μm	<i>Max of values on: All λ_c (22)</i>
Rz	0.8939	μm	<i>Average of values on: All λ_c (22)</i>
Ra	0.1644	μm	

Control, Trial 3

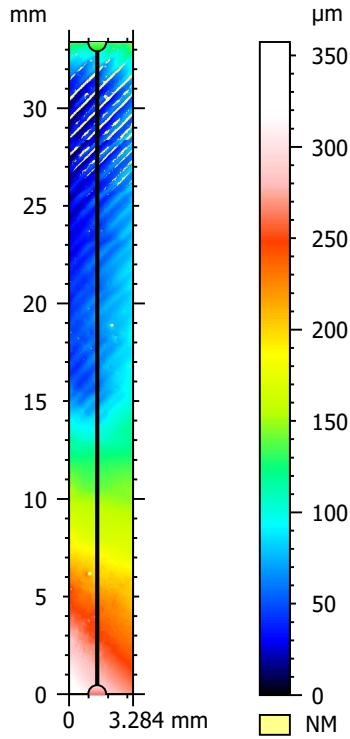
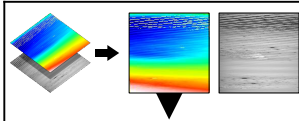


ISO 21920 - Roughne...			
F:	[Workflow] Form removed (L...		
S-filter (λ_s):	Gaussian, 2.5 µm		
L-filter (λ_c):	Gaussian, 0.1 mm		
Evaluation length:	All λ_c (113)		
Height parameters			
Rq	0.1185	µm	
Rsk	2.580		
Rku	36.47		
Rt	2.396	µm	
Rpt	1.591	µm	Max...
Rp	0.1819	µm	Aver...
Rvt	0.8046	µm	Max...
Rv	0.1606	µm	Aver...
Rzx	2.396	µm	Max...
Rz	0.3425	µm	Aver...
Ra	0.07566	µm	





Information	
Channel	Image channel



Information	
Channel	Topography channel

Control, Trial 4

ISO 21920 - Roughness (S-L)

F: [Workflow] Form removed (LS-circle, R=1156 mm)

S-filter (λ_s): Gaussian, 2.5 μm

L-filter (λ_c): Gaussian, 0.5 mm

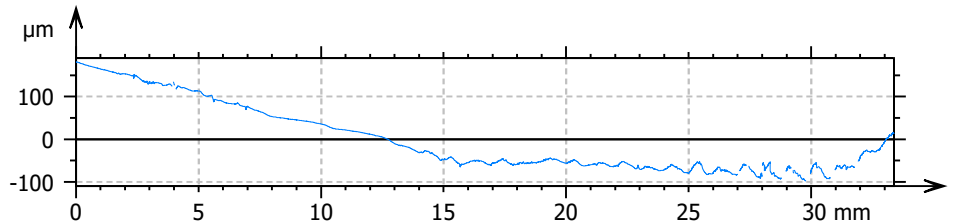
Evaluation length: All λ_c (66)

Height parameters

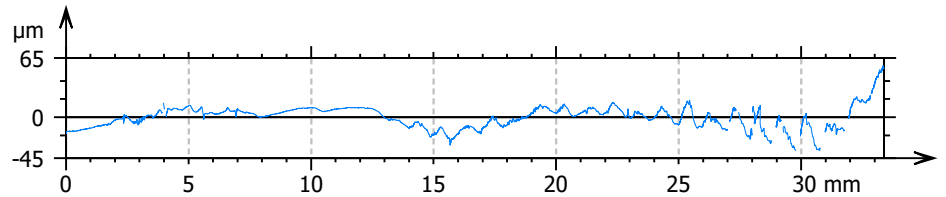
Rq	1.665 μm	
Rsk	1.462	
Rku	19.37	
Rt	27.75 μm	
Rpt	15.99 μm	Max of values on: All λ_c (6..
Rp	2.541 μm	Average of values on: All $\lambda...$
Rvt	11.76 μm	Max of values on: All λ_c (6..
Rv	2.665 μm	Average of values on: All $\lambda...$
Rzx	27.75 μm	Max of values on: All λ_c (6..
Rz	5.206 μm	Average of values on: All $\lambda...$
Ra	0.9728 μm	

Information

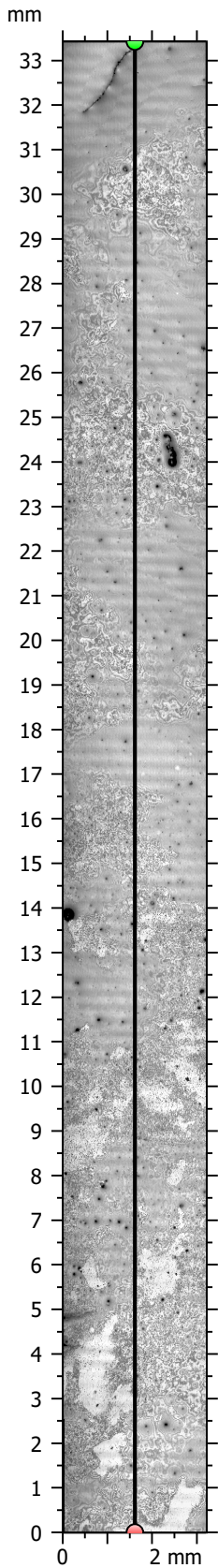
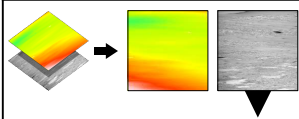
The studiable contains non-measured points. The res...



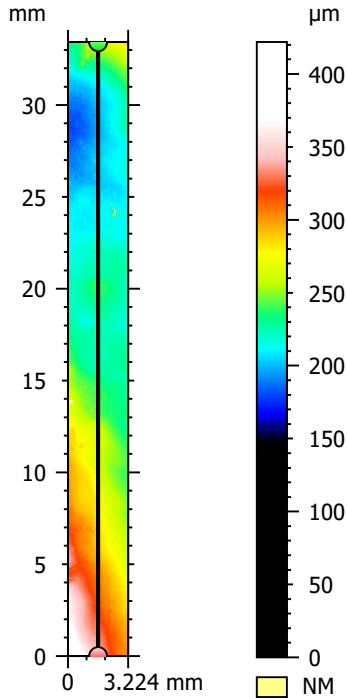
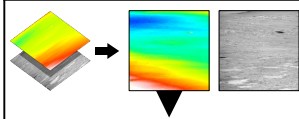
Parameters	Value	Unit
Length	33.38	mm



Parameters	Value	Unit
Length	33.38	mm



Information	
Channel	Image channel



Information	
Channel	Topography channel

Control, Trial 5

ISO 21920 - Roughness (S-L)

F: [Workflow] Form removed (LS-poly 2)

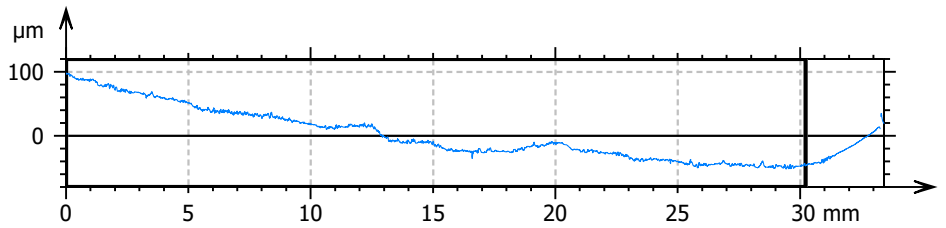
S-filter (λ_s): Gaussian, 2.5 μm

L-filter (λ_c): Gaussian, 0.5 mm

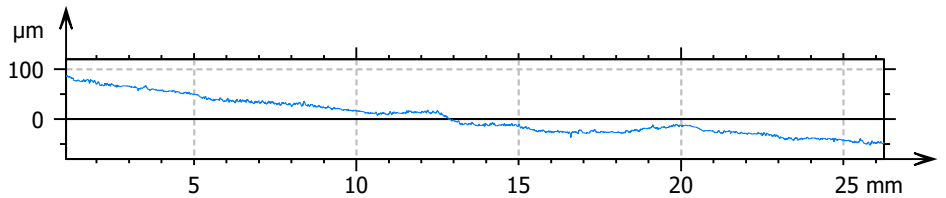
Evaluation length: All λ_c (60)

Height parameters

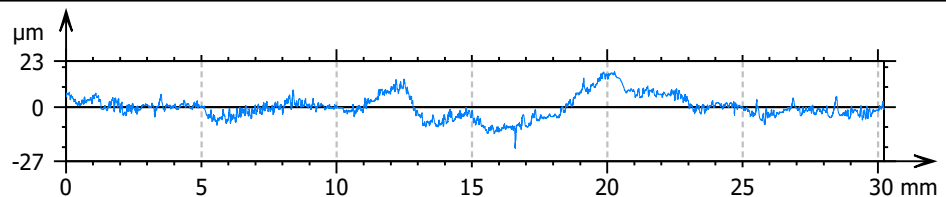
Rq	1.306	μm	
Rsk	0.1586		
Rku	4.906		
Rt	15.38	μm	
Rpt	5.830	μm	Max of values on: All λ_c (6..
Rp	2.868	μm	Average of values on: All $\lambda...$
Rvt	9.550	μm	Max of values on: All λ_c (6..
Rv	2.610	μm	Average of values on: All $\lambda...$
Rzx	15.38	μm	Max of values on: All λ_c (6..
Rz	5.478	μm	Average of values on: All $\lambda...$
Ra	0.9874	μm	



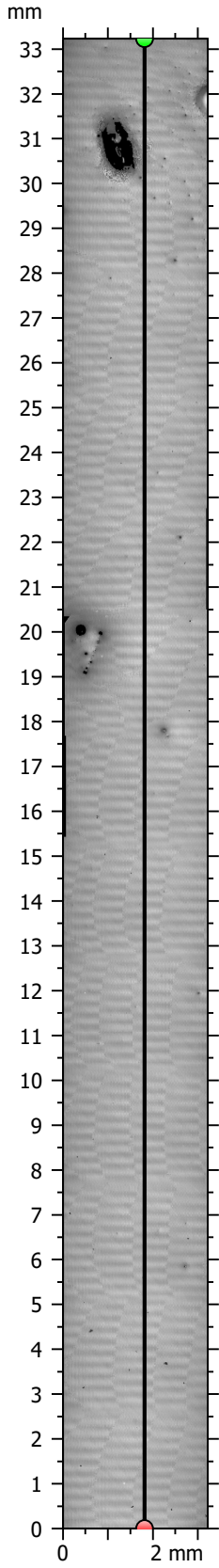
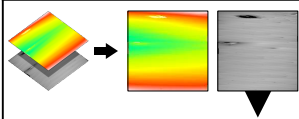
Parameters	Value	Unit
Length	33.43	mm



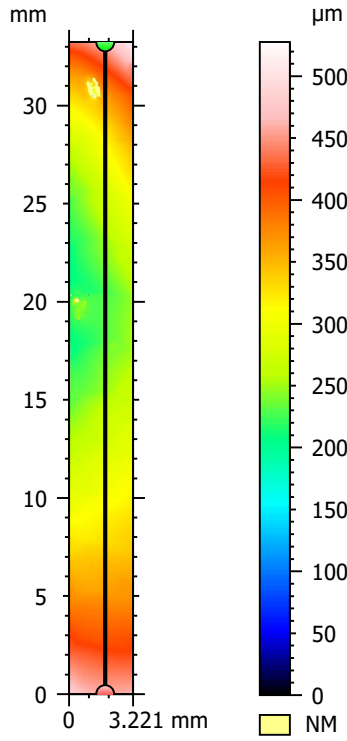
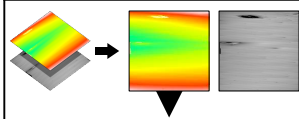
Parameters	Value	Unit
Length	30.23	mm



Parameters	Value	Unit
Length	30.23	mm



Information	
Channel	Image channel



Information	
Channel	Topography channel

Control, Trial 6

ISO 21920 - Roughness (S-L)

F: [Workflow] Form removed (LS-circle, R=647.9 mm)

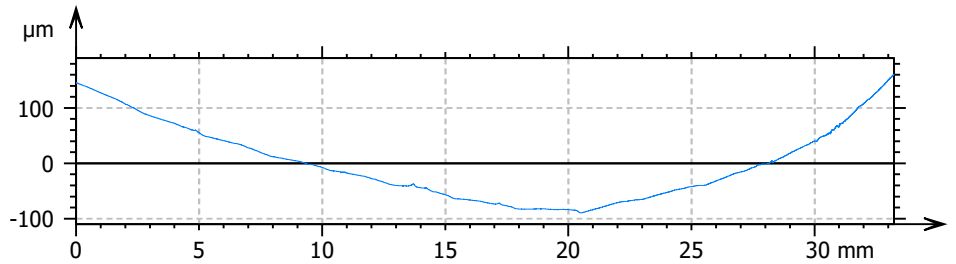
S-filter (λ_s): Gaussian, 2.5 μm

L-filter (λ_c): Gaussian, 0.5 mm

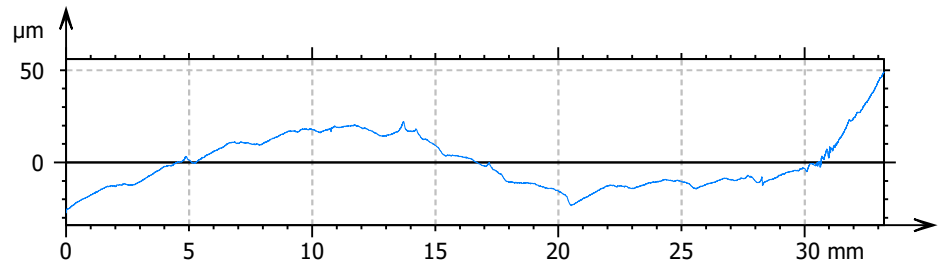
Evaluation length: All λ_c (66)

Height parameters

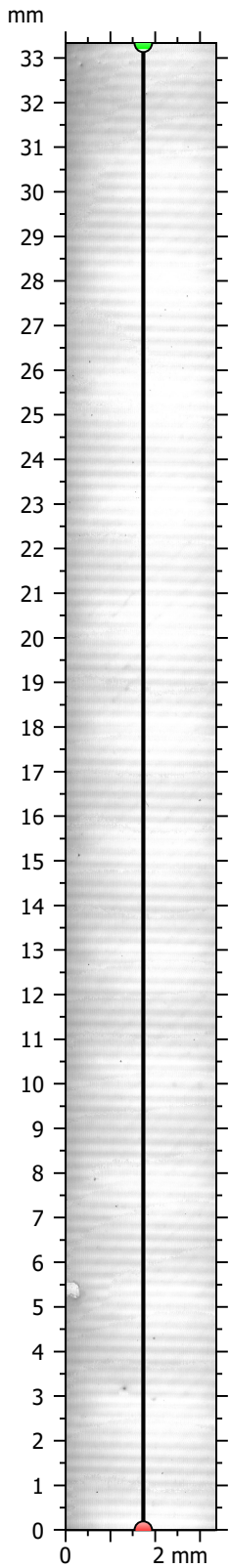
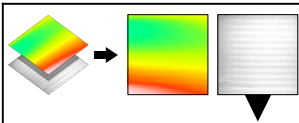
Rq	0.3525	μm	
Rsk	-0.05486		
Rku	21.02		
Rt	5.837	μm	
Rpt	2.568	μm	Max of values on: All λ_c ...
Rp	0.5875	μm	Average of values on: All λ_c ...
Rvt	3.269	μm	Max of values on: All λ_c ...
Rv	0.6111	μm	Average of values on: All λ_c ...
Rzx	5.837	μm	Max of values on: All λ_c ...
Rz	1.199	μm	Average of values on: All λ_c ...
Ra	0.2047	μm	



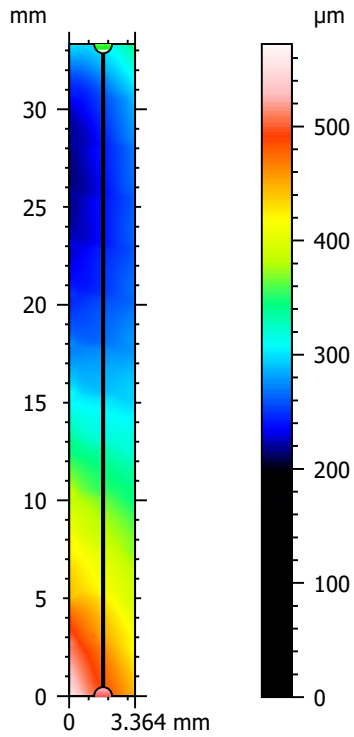
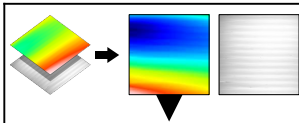
Parameters	Value	Unit
Length	33.23	mm



Parameters	Value	Unit
Length	33.23	mm



Information	
Channel	Image channel



Information	
Channel	Topography channel

Control, Trial 7

ISO 21920 - Roughness (S-L)

F: None

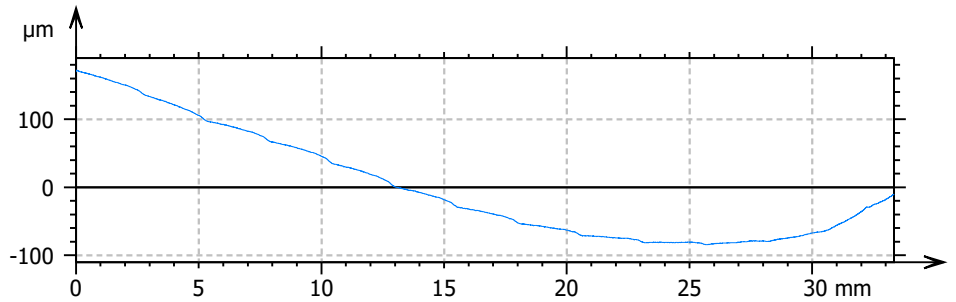
S-filter (λ_s): Gaussian, 2.5 μm

L-filter (λ_c): Gaussian, 0.5 mm

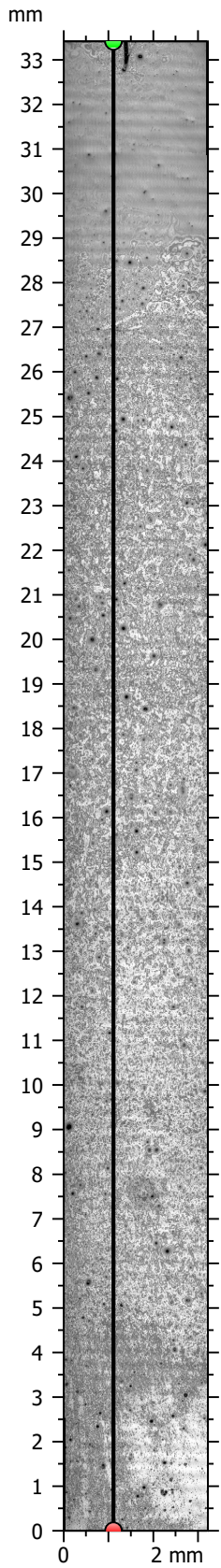
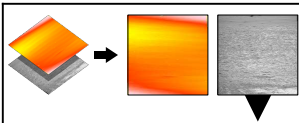
Evaluation length: All λ_c (66)

Height parameters

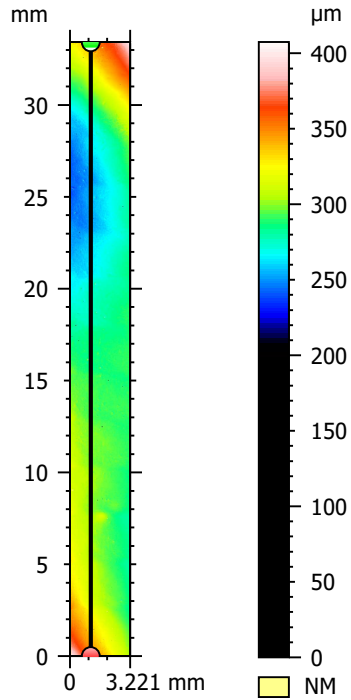
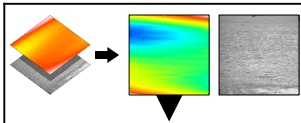
Rq	0.2144	μm	
Rsk	0.2817		
Rku	5.453		
Rt	2.338	μm	
Rpt	1.400	μm	Max of values on: All λ_c (6..
Rp	0.4441	μm	Average of values on: All $\lambda...$
Rvt	0.9377	μm	Max of values on: All λ_c (6..
Rv	0.4206	μm	Average of values on: All $\lambda...$
Rzx	2.338	μm	Max of values on: All λ_c (6..
Rz	0.8646	μm	Average of values on: All $\lambda...$
Ra	0.1609	μm	



Parameters	Value	Unit
Length	33.34	mm



Information	
Channel	Image channel



Information	
Channel	Topography channel

Control, Trial 8

ISO 21920 - Roughness (S-L)

F: None

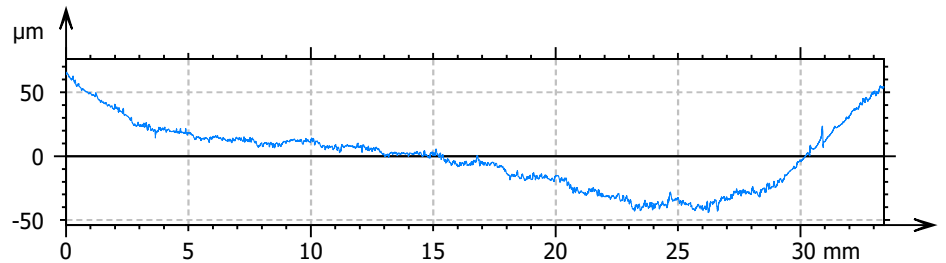
S-filter (λ_s): Gaussian, 2.5 μm

L-filter (λ_c): Gaussian, 0.5 mm

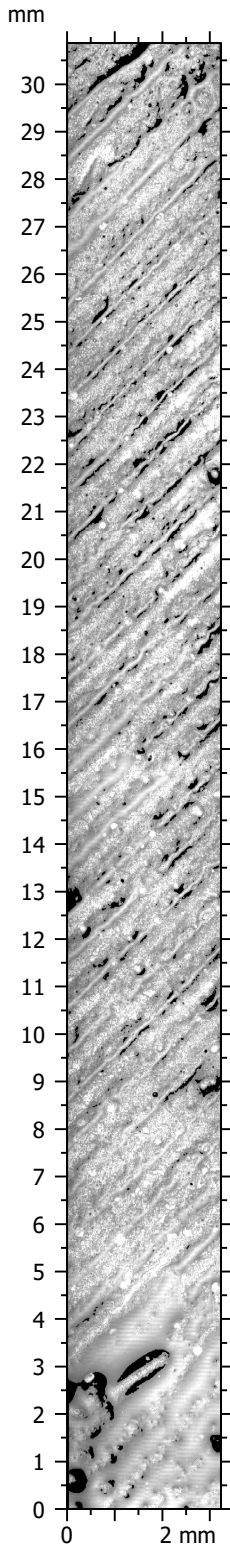
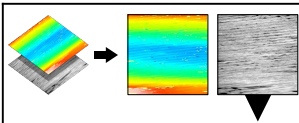
Evaluation length: All λ_c (66)

Height parameters

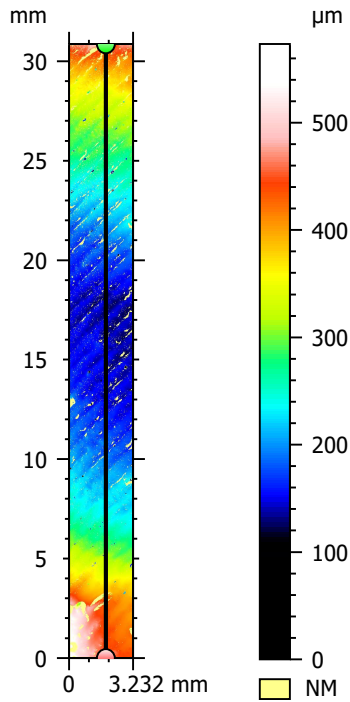
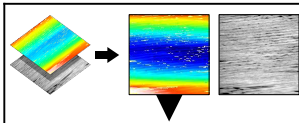
Rq	1.191	μm	
Rsk	0.2873		
Rku	6.992		
Rt	16.89	μm	
Rpt	9.740	μm	Max of values on: All λ_c (6..
Rp	2.490	μm	Average of values on: All $\lambda...$
Rvt	7.146	μm	Max of values on: All λ_c (6..
Rv	2.515	μm	Average of values on: All $\lambda...$
Rzx	16.89	μm	Max of values on: All λ_c (6..
Rz	5.005	μm	Average of values on: All $\lambda...$
Ra	0.8812	μm	



Parameters	Value	Unit
Length	33.42	mm



Information	
Channel	Image channel



Information	
Channel	Topography channel

Conventional Freezing, Trial 1

ISO 21920 - Roughness (S-L)

F: [Workflow] Form removed (LS-poly 2)

S-filter (λ_s): Gaussian, 2.5 μm

L-filter (λ_c): Gaussian, 0.5 mm

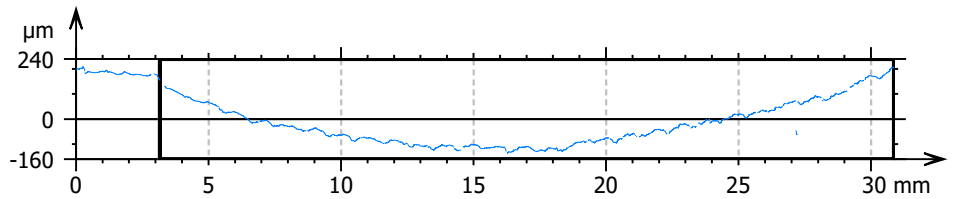
Evaluation length: All λ_c (55)

Height parameters

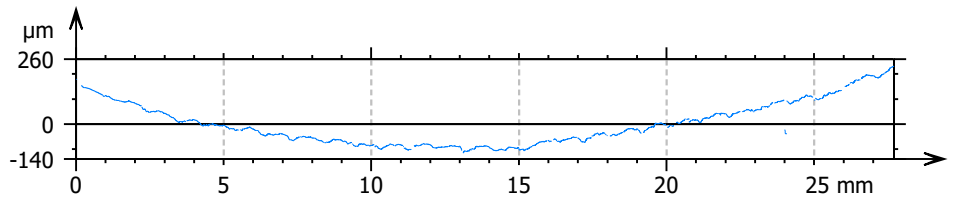
Rq	4.471	μm	
Rsk	-8.323		
Rku	205.9		
Rt	128.9	μm	
Rpt	37.09	μm	Max of values on: All λ_c (55)
Rp	5.074	μm	Average of values on: All λ_c (55)
Rvt	91.78	μm	Max of values on: All λ_c (55)
Rv	6.087	μm	Average of values on: All λ_c (55)
Rzx	128.9	μm	Max of values on: All λ_c (55)
Rz	11.16	μm	Average of values on: All λ_c (55)
Ra	1.972	μm	

Information

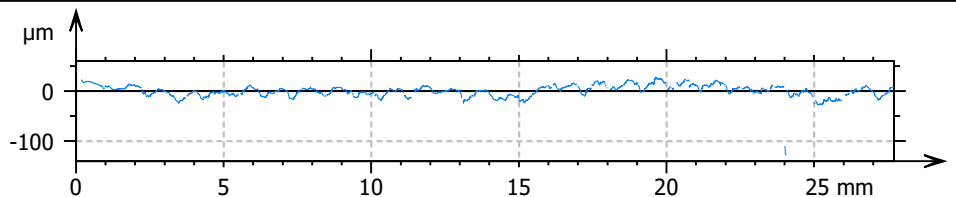
The studiable contains non-measured points. The res...



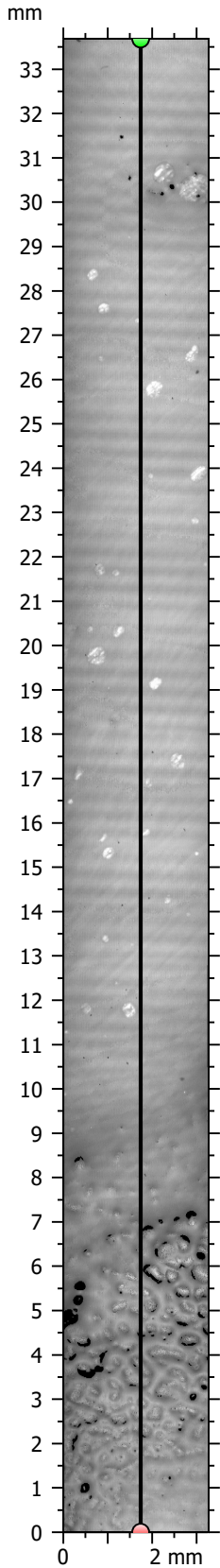
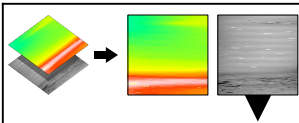
Parameters	Value	Unit
Length	30.87	mm



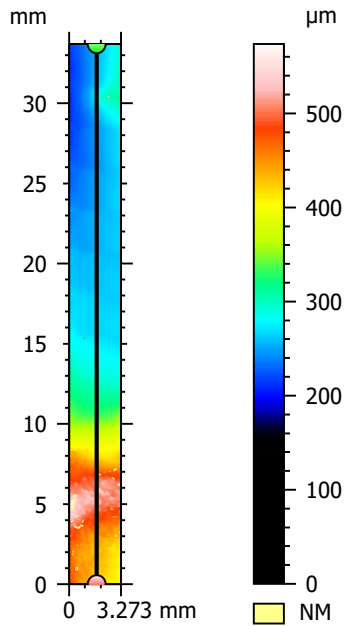
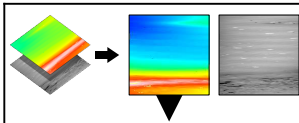
Parameters	Value	Unit
Length	27.70	mm



Parameters	Value	Unit
Length	27.70	mm



Information	
Channel	Image channel



Information	
Channel	Topography channel

Conventional Freezing, Trial 2

ISO 21920 - Roughness (S-L)

F: [Workflow] Form removed (LS-poly 2)

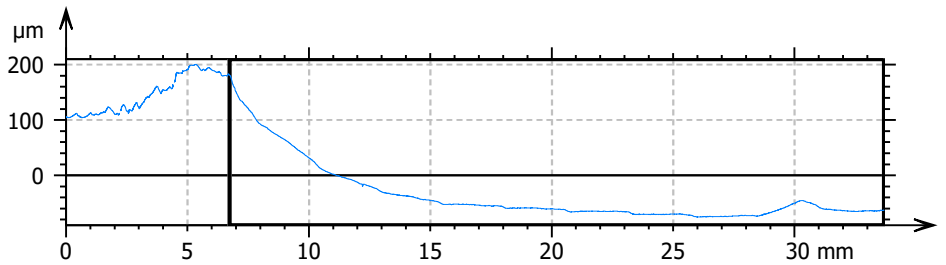
S-filter (λ_s): Gaussian, 2.5 μm

L-filter (λ_c): Gaussian, 0.5 mm

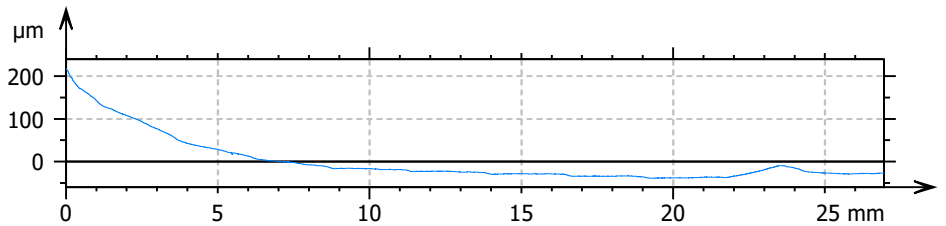
Evaluation length: All λ_c (53)

Height parameters

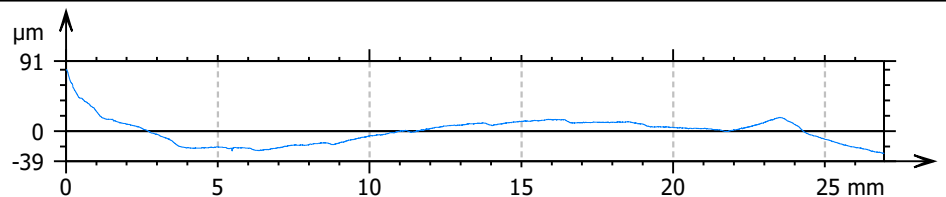
Rq	0.4228	μm	
Rsk	6.116		
Rku	94.98		
Rt	9.929	μm	
Rpt	6.399	μm	Max of values on: All λ_c (5...
Rp	0.6264	μm	Average of values on: All $\lambda...$
Rvt	3.530	μm	Max of values on: All λ_c (5...
Rv	0.5923	μm	Average of values on: All $\lambda...$
Rzx	9.929	μm	Max of values on: All λ_c (5...
Rz	1.219	μm	Average of values on: All $\lambda...$
Ra	0.2294	μm	



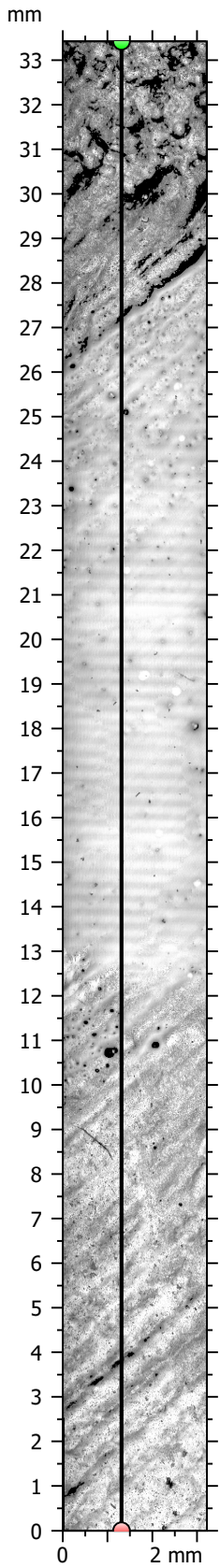
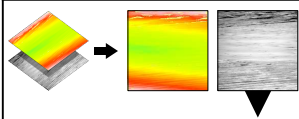
Parameters	Value	Unit
Length	33.68	mm



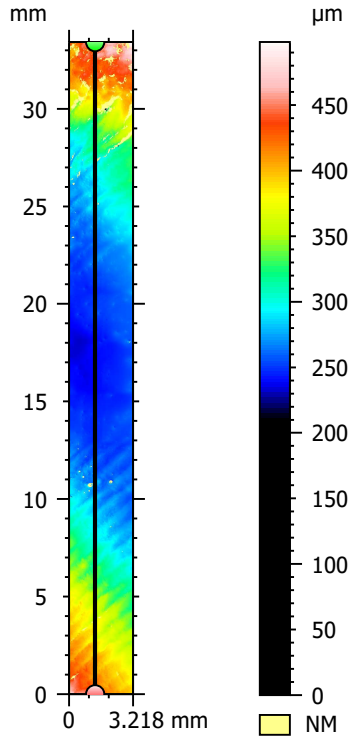
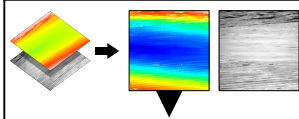
Parameters	Value	Unit
Length	26.95	mm



Parameters	Value	Unit
Length	26.95	mm



Information	
Channel	Image channel



Information	
Channel	Topography channel

Conventional Freezing, Trial 3

ISO 21920 - Roughness (S-L)

F: [Workflow] Form removed (LS-poly 2)

S-filter (λ_s): Gaussian, 2.5 μm

L-filter (λ_c): Gaussian, 0.5 mm

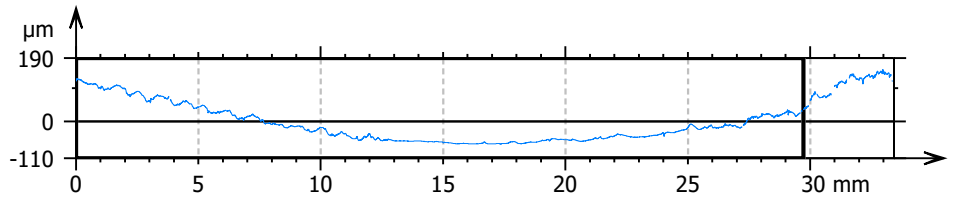
Evaluation length: All λ_c (59)

Height parameters

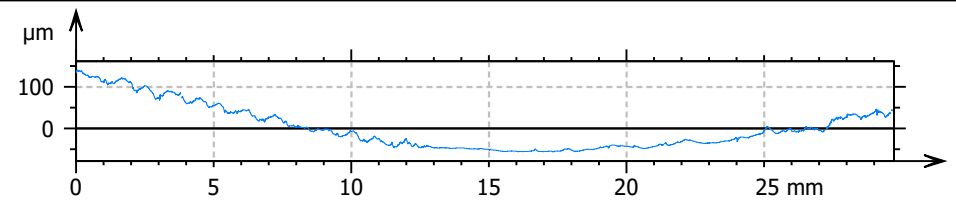
Rq	1.653	μm	
Rsk	-0.08478		
Rku	5.353		
Rt	16.23	μm	
Rpt	7.731	μm	Max of values on: All λ_c ...
Rp	3.167	μm	Average of values on: Al...
Rvt	8.504	μm	Max of values on: All λ_c ...
Rv	3.048	μm	Average of values on: Al...
Rzx	16.23	μm	Max of values on: All λ_c ...
Rz	6.215	μm	Average of values on: Al...
Ra	1.142	μm	

Information

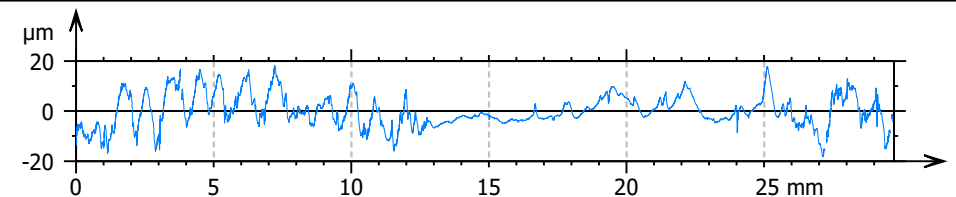
The studiable contains non-measured points. The res...



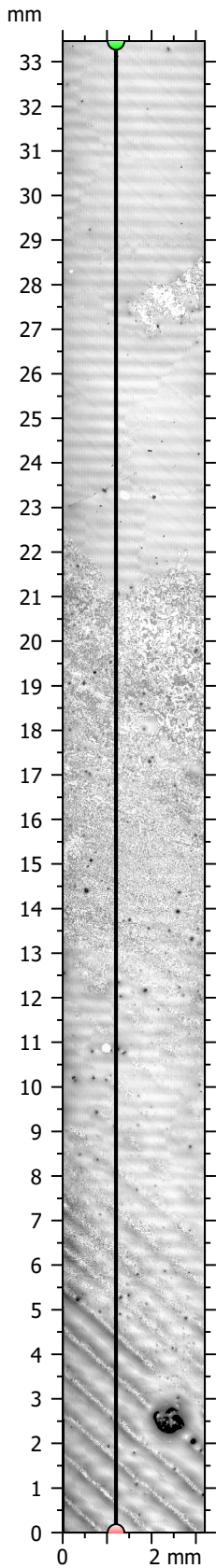
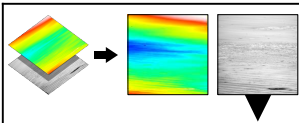
Parameters	Value	Unit
Length	33.43	mm



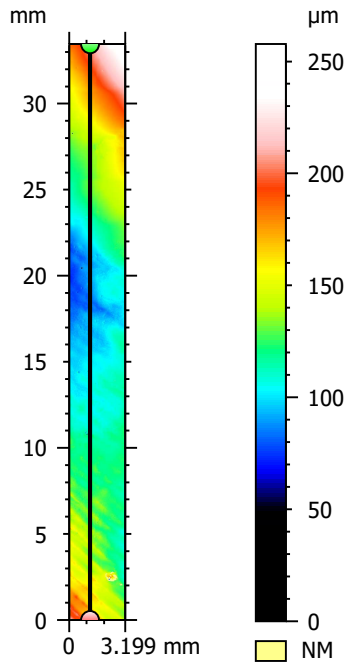
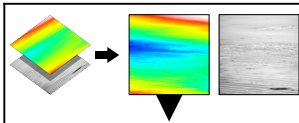
Parameters	Value	Unit
Length	29.73	mm



Parameters	Value	Unit
Length	29.73	mm



Information	
Channel	Image channel



Information	
Channel	Topography channel

Dry Ice Freeze/Thaw 1

ISO 21920 - Roughness (S-L)

F: [Workflow] Form removed (LS-poly 2)

S-filter (λ_s): Gaussian, 2.5 μm

L-filter (λ_c): Gaussian, 0.5 mm

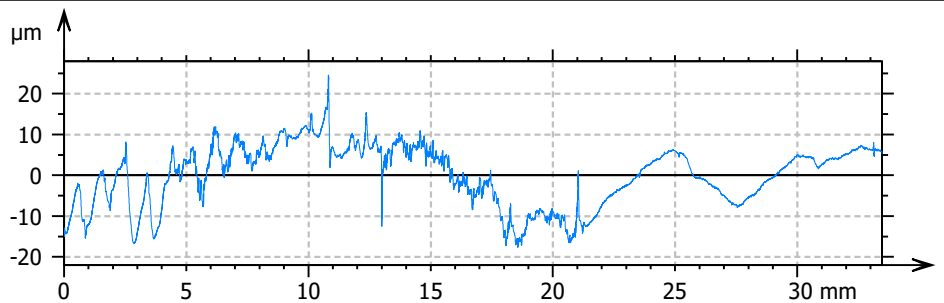
Evaluation length: All λ_c (66)

Height parameters

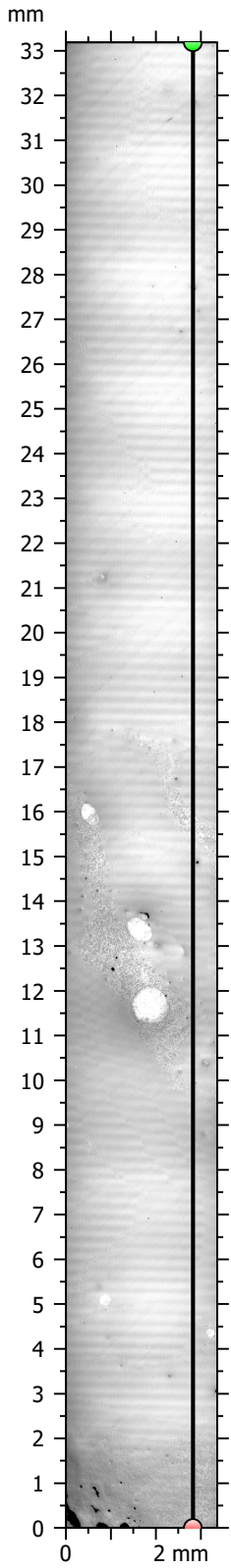
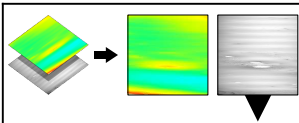
Rq	1.144	μm	
Rsk	0.1133		
Rku	27.69		
Rt	26.57	μm	
Rpt	11.45	μm	Max of values on: All λ_c (6..
Rp	1.923	μm	Average of values on: All $\lambda...$
Rvt	15.12	μm	Max of values on: All λ_c (6..
Rv	1.832	μm	Average of values on: All $\lambda...$
Rzx	26.57	μm	Max of values on: All λ_c (6..
Rz	3.755	μm	Average of values on: All $\lambda...$
Ra	0.6533	μm	



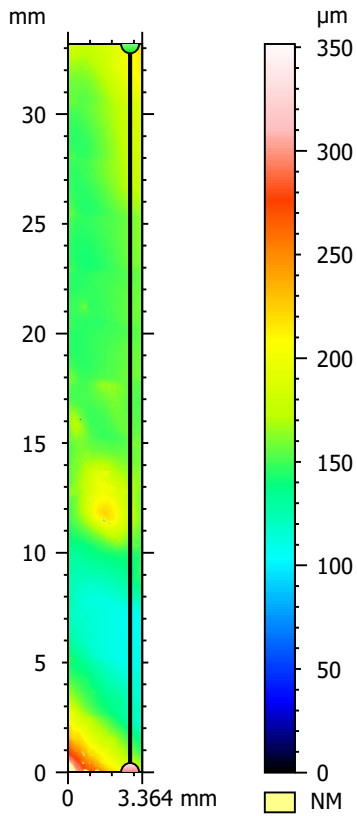
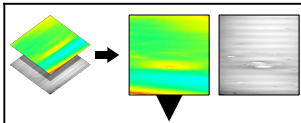
Parameters	Value	Unit
Length	33.46	mm



Parameters	Value	Unit
Length	33.46	mm



Information	
Channel	Image channel



Information	
Channel	Topography channel

Dry Ice Freeze/Thaw 2

ISO 21920 - Roughness (S-L)

F: [Workflow] Form removed (LS-poly 3)

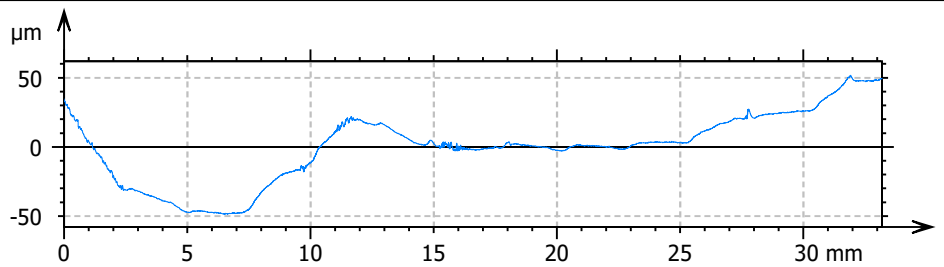
S-filter (λ_s): Gaussian, 2.5 μm

L-filter (λ_c): Gaussian, 0.5 mm

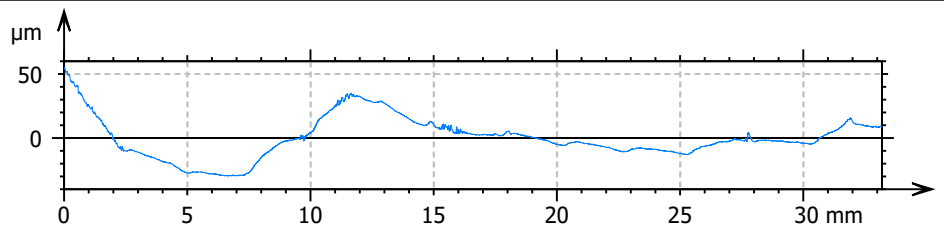
Evaluation length: All λ_c (66)

Height parameters

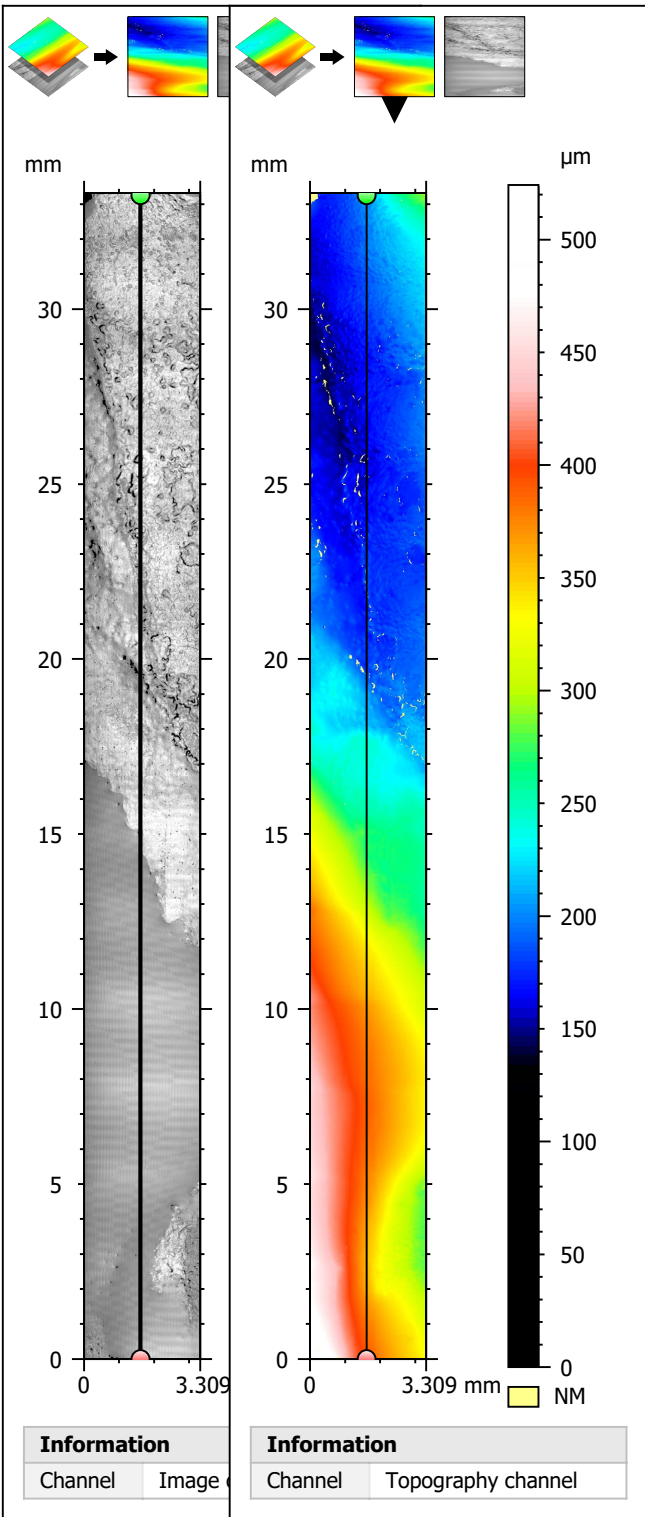
Rq	0.4949	μm	
Rsk	1.133		
Rku	13.96		
Rt	6.699	μm	
Rpt	3.814	μm	Max of values on: All λ_c (6...
Rp	0.8615	μm	Average of values on: All $\lambda...$
Rvt	2.885	μm	Max of values on: All λ_c (6...
Rv	0.7234	μm	Average of values on: All $\lambda...$
Rzx	6.699	μm	Max of values on: All λ_c (6...
Rz	1.585	μm	Average of values on: All $\lambda...$
Ra	0.2857	μm	



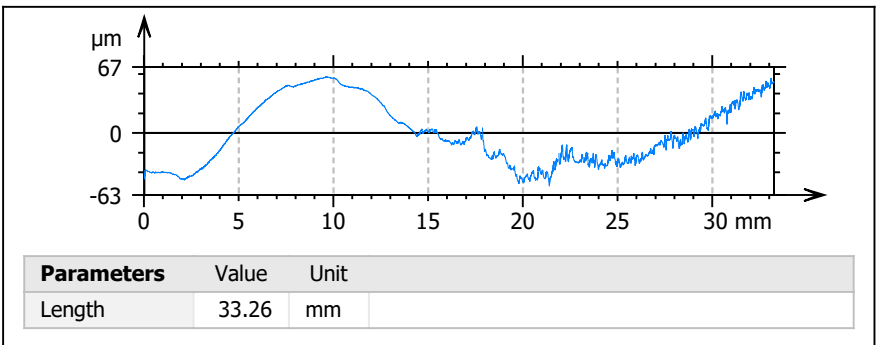
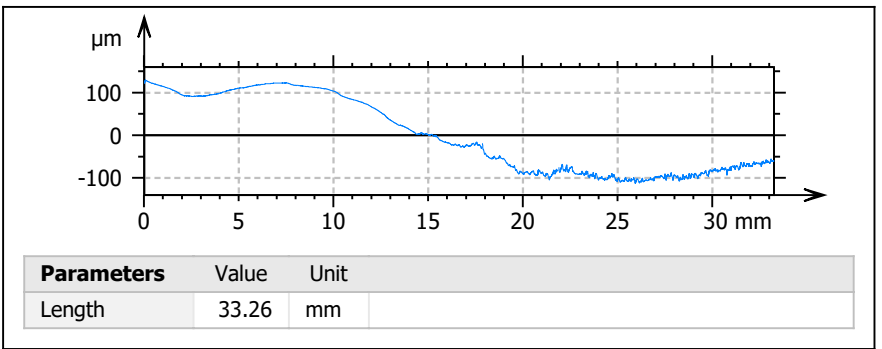
Parameters	Value	Unit
Length	33.19	mm



Parameters	Value	Unit
Length	33.19	mm



LN2 Frozen/Thawed, Trial 1



ISO 21920 - Roughnes...

F: [Workflow] Form removed (LS...

S-filter (λ_s): Gaussian, 2.5 μm

L-filter (λ_c): Gaussian, 0.5 mm

Evaluation length: All λ_c (66)

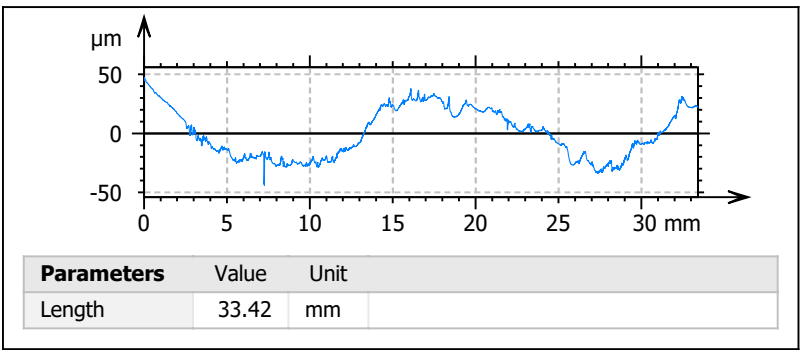
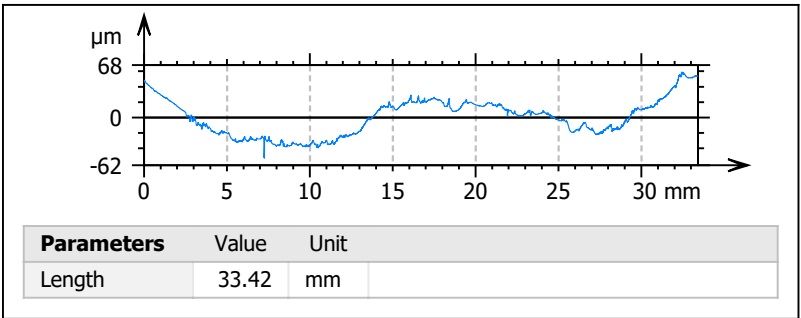
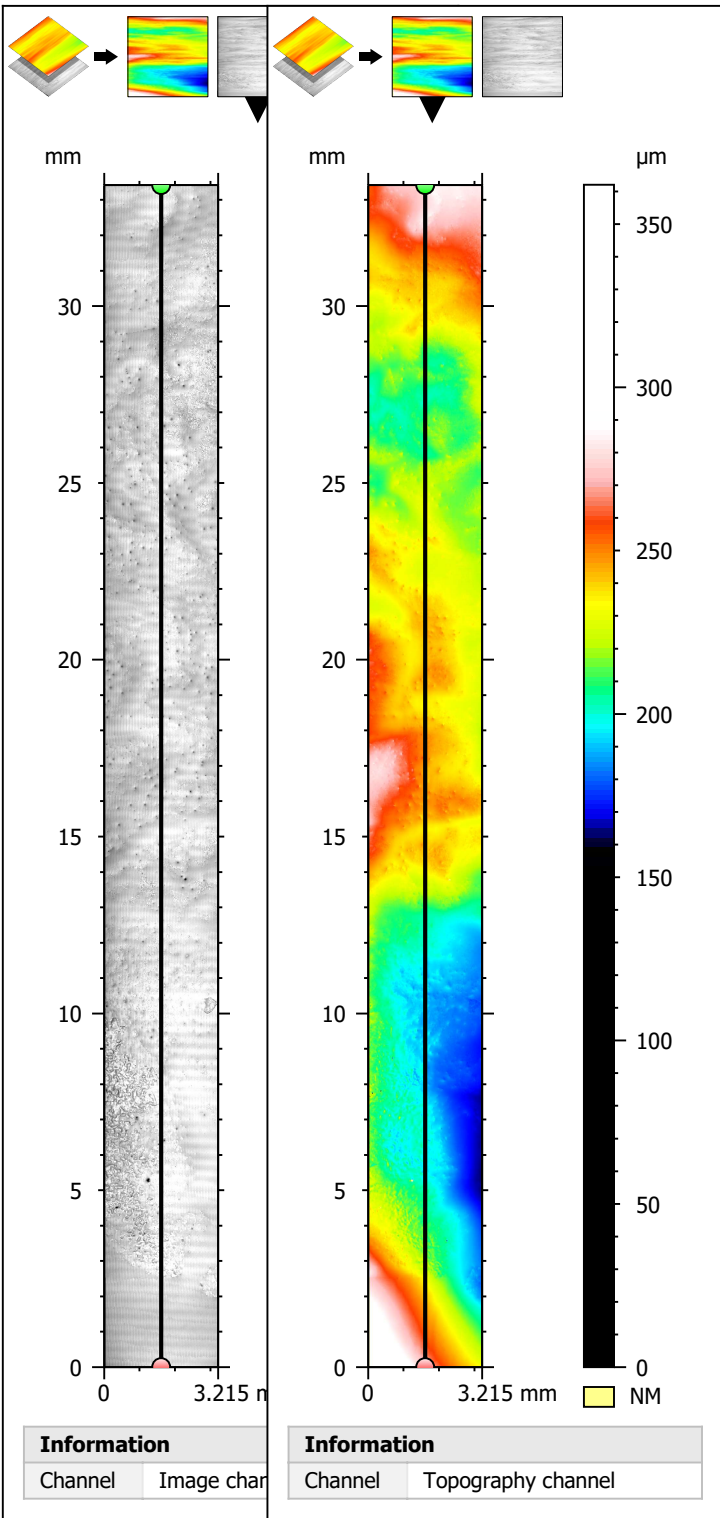
Height parameters

Rq	1.996	μm	
Rsk	0.1577		
Rku	6.841		
Rt	23.41	μm	
Rpt	11.32	μm	Max of...
Rp	3.147	μm	Averag...
Rvt	12.09	μm	Max of...
Rv	3.219	μm	Averag...
Rzx	23.41	μm	Max of...
Rz	6.366	μm	Averag...
Ra	1.231	μm	

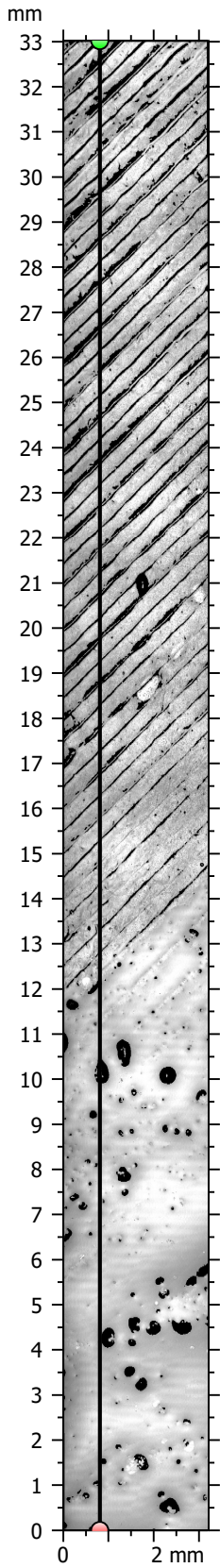
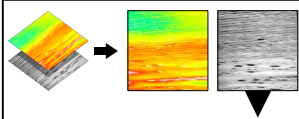
Information

The studiable contains non-meas...

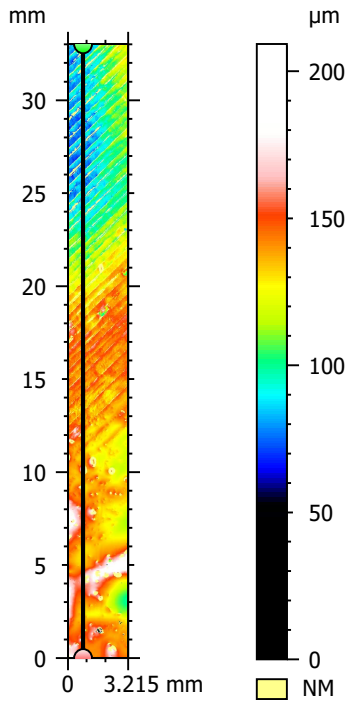
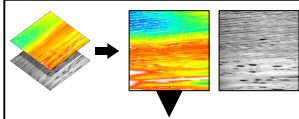
LN2 Frozen/Thawed, Trial 2



ISO 21920 - Roughness (S-L)			
F: [Workflow] Form removed (LS-poly 2)			
S-filter (λ_s): Gaussian, 2.5 μm			
L-filter (λ_c): Gaussian, 0.5 mm			
Evaluation length: All λ_c (66)			
Height parameters			
Rq	1.258	μm	
Rsk	-2.505		
Rku	56.97		
Rt	31.20	μm	
Rpt	8.271	μm	Max of values on: All λ_c (66)
Rp	2.384	μm	Average of values on: All λ_c (66)
Rvt	22.92	μm	Max of values on: All λ_c (66)
Rv	2.190	μm	Average of values on: All λ_c (66)
Rzx	31.20	μm	Max of values on: All λ_c (66)
Rz	4.573	μm	Average of values on: All λ_c (66)
Ra	0.7775	μm	



Information	
Channel	Image channel



Information	
Channel	Topography channel

Dry Ice to Conventional Freeze/Thaw, Trial 1

* potential outlier due to drying / forming to mold

ISO 21920 - Roughness (S-L)

F: [Workflow] Form removed (LS-poly 3)

S-filter (λ_s): Gaussian, 2.5 μm

L-filter (λ_c): Gaussian, 0.5 mm

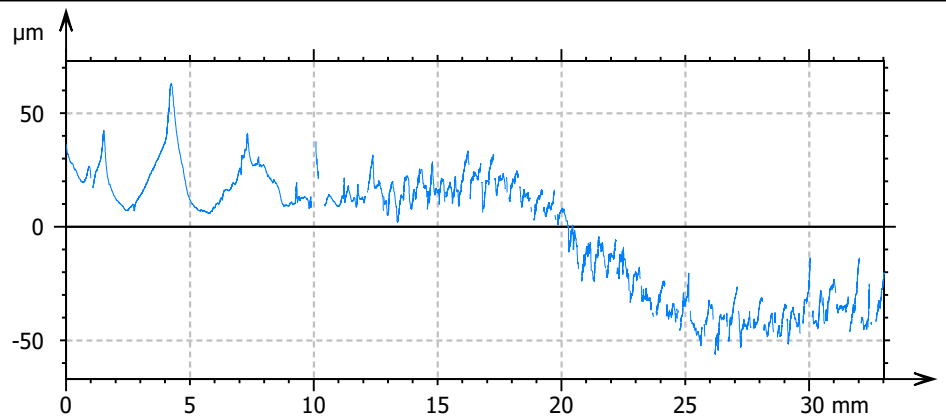
Evaluation length: All λ_c (66)

Height parameters

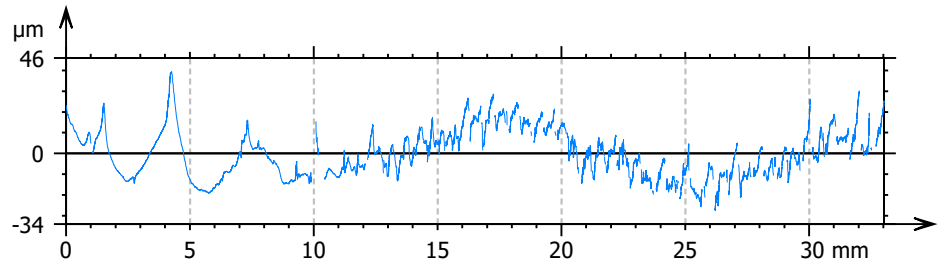
Rq	2.496 μm	
Rsk	0.3282	
Rku	5.784	
Rt	25.68 μm	
Rpt	14.75 μm	Max of values on: All λ_c (6...
Rp	5.061 μm	Average of values on: All $\lambda...$
Rvt	10.93 μm	Max of values on: All λ_c (6...
Rv	4.695 μm	Average of values on: All $\lambda...$
Rzx	25.68 μm	Max of values on: All λ_c (6...
Rz	9.756 μm	Average of values on: All $\lambda...$
Ra	1.723 μm	

Information

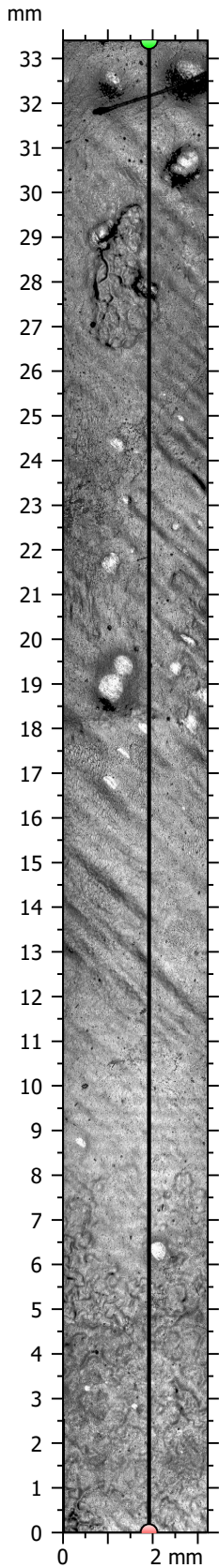
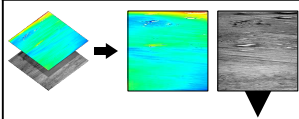
The studiable contains non-measured points. The res...



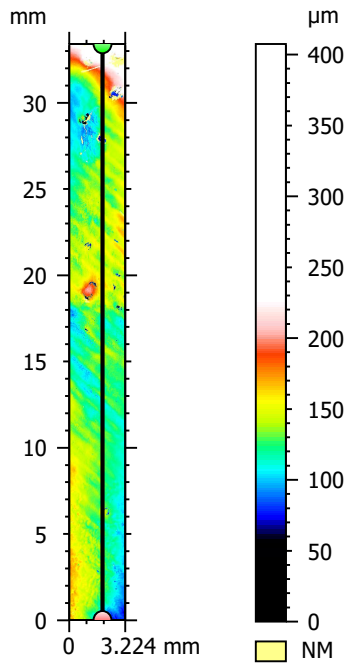
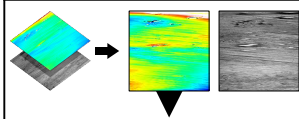
Parameters	Value	Unit
Length	33.02	mm



Parameters	Value	Unit
Length	33.02	mm



Information	
Channel	Image channel



Information	
Channel	Topography channel

Dry Ice to Conventional Freeze/Thaw, Trial 2

ISO 21920 - Roughness (S-L)

F: None

S-filter (λ_s): Gaussian, 2.5 μm

L-filter (λ_c): Gaussian, 0.8 mm

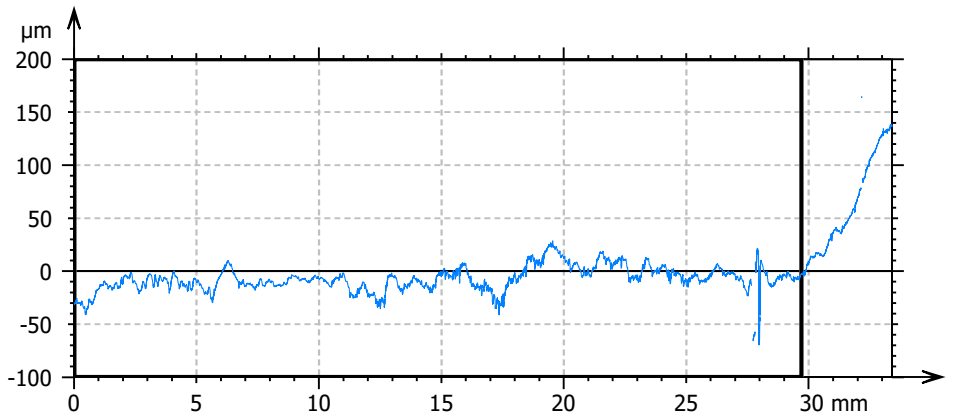
Evaluation length: All λ_c (37)

Height parameters

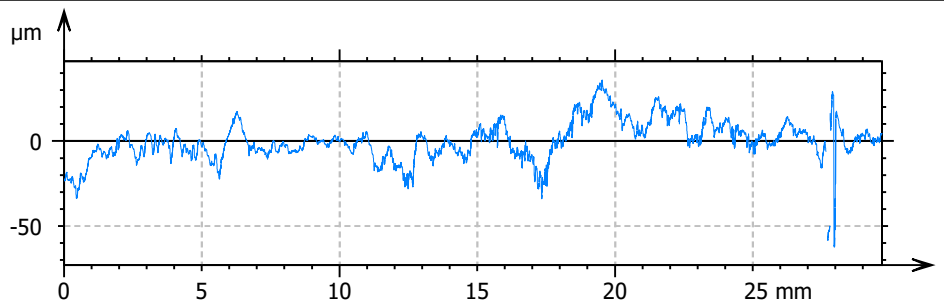
Rq	4.772	μm	
Rsk	-2.645		
Rku	49.37		
Rt	96.12	μm	
Rpt	37.22	μm	Max of values on: All λ_c (37)
Rp	6.541	μm	Average of values on: All λ_c (37)
Rvt	58.90	μm	Max of values on: All λ_c (37)
Rv	8.136	μm	Average of values on: All λ_c (37)
Rzx	96.12	μm	Max of values on: All λ_c (37)
Rz	14.68	μm	Average of values on: All λ_c (37)
Ra	2.632	μm	

Information

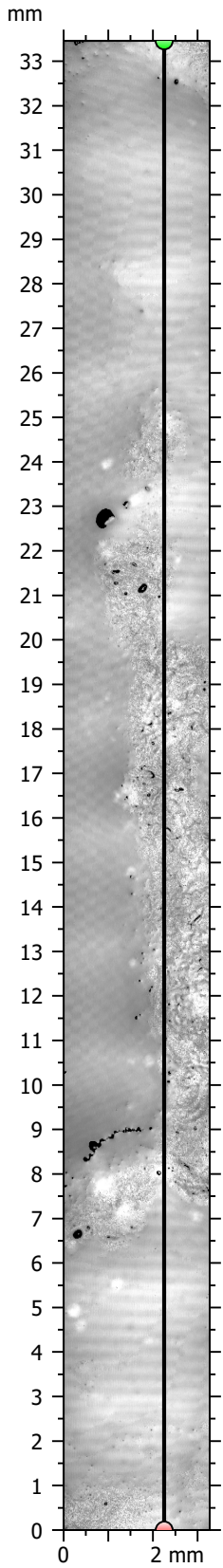
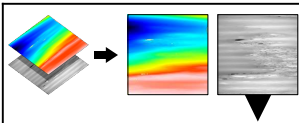
The studiable contains non-measured points. The res...



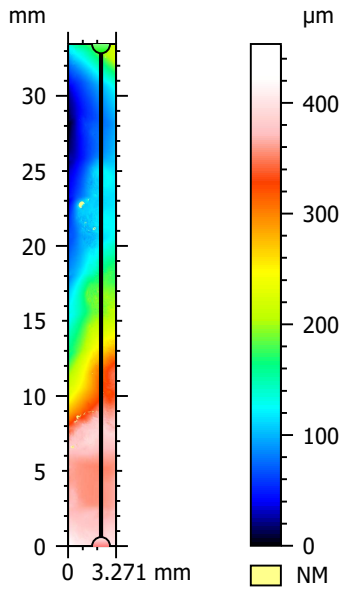
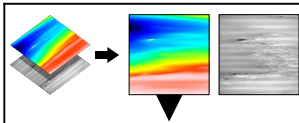
Parameters	Value	Unit
Length	33.40	mm



Parameters	Value	Unit
Length	29.69	mm



Information	
Channel	Image channel



Information	
Channel	Topography channel

LN2 to Dry Ice, Trial 1

ISO 21920 - Roughness (S-L)

F: [Workflow] Form removed (LS-poly 3)

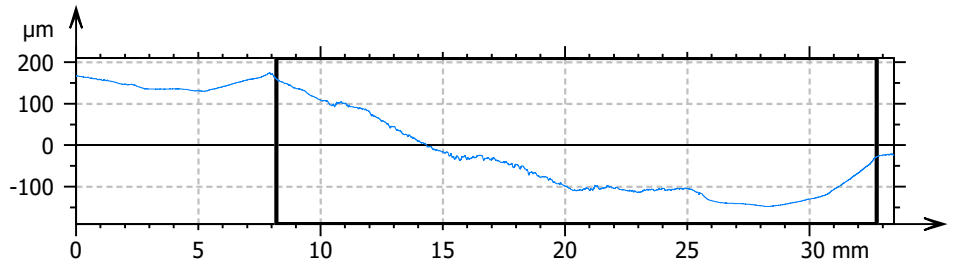
S-filter (λ_s): Gaussian, 2.5 μm

L-filter (λ_c): Gaussian, 0.5 mm

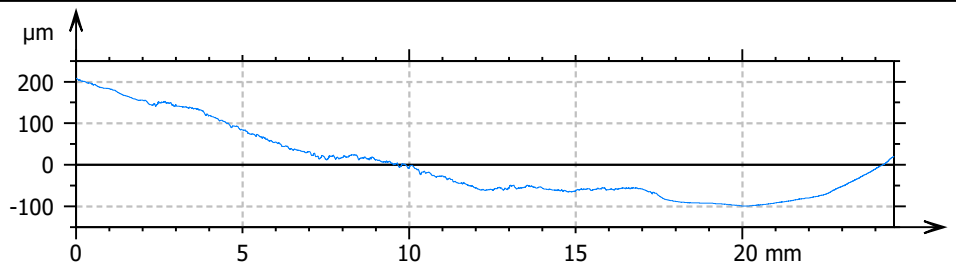
Evaluation length: All λ_c (49)

Height parameters

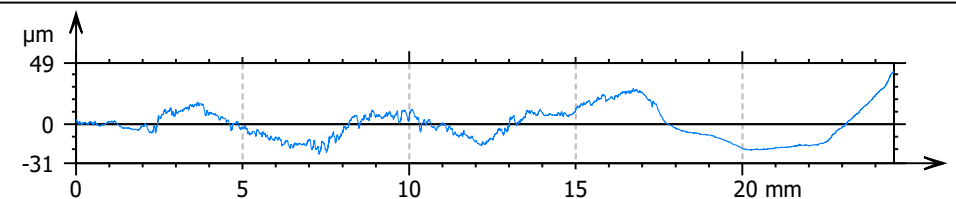
Rq	1.310	μm	
Rsk	-0.4916		
Rku	6.451		
Rt	12.22	μm	
Rpt	4.913	μm	Max of values on: All λ_c (...)
Rp	2.067	μm	Average of values on: All...
Rvt	7.303	μm	Max of values on: All λ_c (...)
Rv	2.380	μm	Average of values on: All...
Rzx	12.22	μm	Max of values on: All λ_c (...)
Rz	4.447	μm	Average of values on: All...
Ra	0.8709	μm	



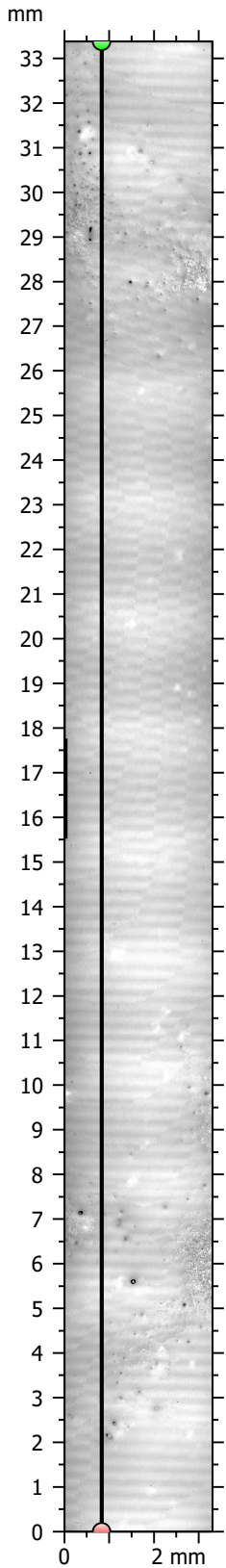
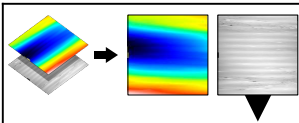
Parameters	Value	Unit
Length	33.46	mm



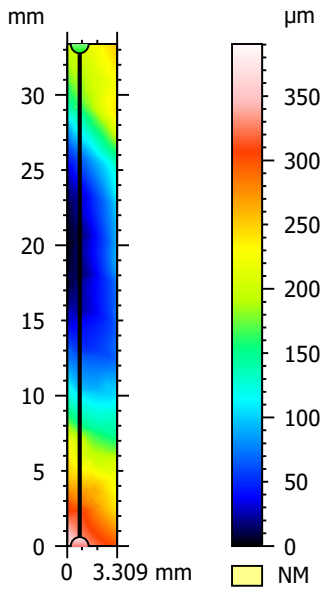
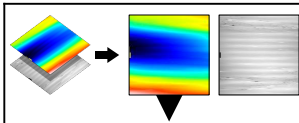
Parameters	Value	Unit
Length	24.56	mm



Parameters	Value	Unit
Length	24.56	mm



Information	
Channel	Image channel



Information	
Channel	Topography channel

LN2 to Dry Ice, Trial 2

ISO 21920 - Roughness (S-L)

F: [Workflow] Form removed (LS-poly 2)

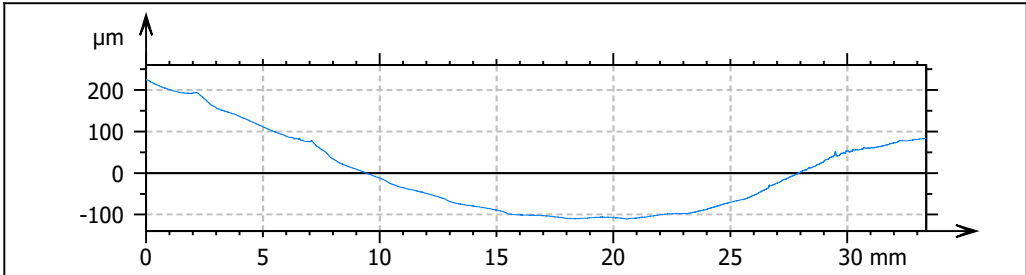
S-filter (λ_s): Gaussian, 2.5 μm

L-filter (λ_c): Gaussian, 0.5 mm

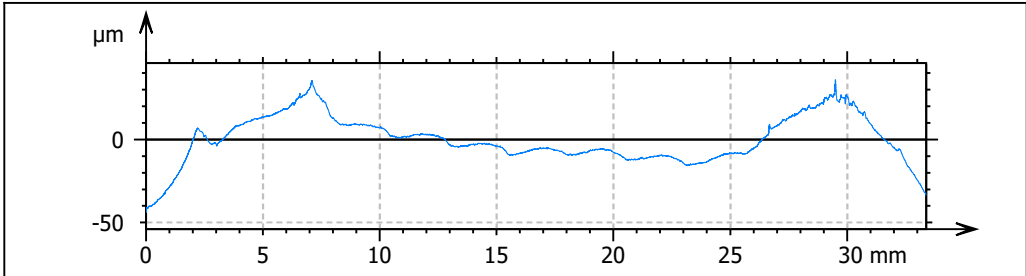
Evaluation length: All λ_c (66)

Height parameters

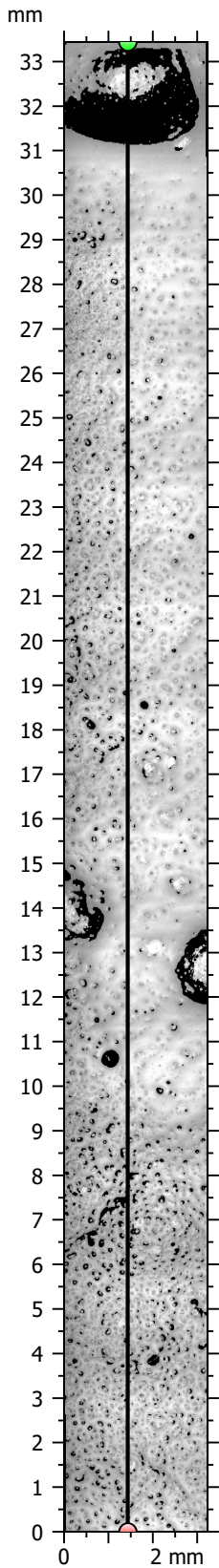
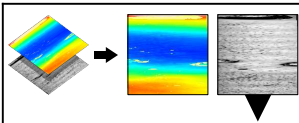
Rq	0.5089	μm	
Rsk	4.124		
Rku	64.41		
Rt	12.31	μm	
Rpt	8.711	μm	Max of values on: All λ_c (66)
Rp	0.8568	μm	Average of values on: All λ_c (66)
Rvt	3.602	μm	Max of values on: All λ_c (66)
Rv	0.7325	μm	Average of values on: All λ_c (66)
Rzx	12.31	μm	Max of values on: All λ_c (66)
Rz	1.589	μm	Average of values on: All λ_c (66)
Ra	0.2717	μm	



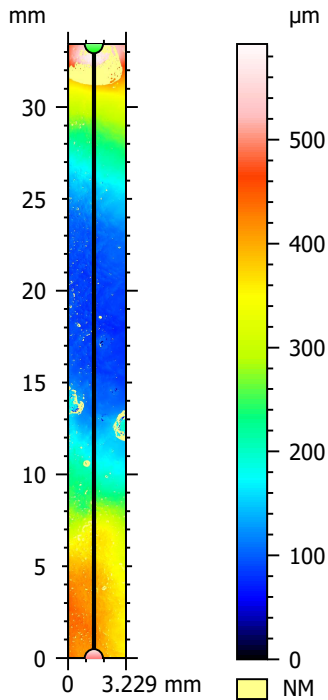
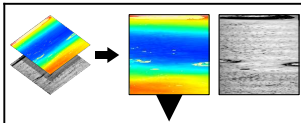
Parameters	Value	Unit
Length	33.38	mm



Parameters	Value	Unit
Length	33.38	mm



Information	
Channel	Image channel



Information	
Channel	Topography channel

LN2 to Dry Ice to Conventional, Trial 1

ISO 21920 - Roughness (S-L)

F: [Workflow] Form removed (LS-poly 2)

S-filter (λ_s): Gaussian, 2.5 μm

L-filter (λ_c): Gaussian, 0.5 mm

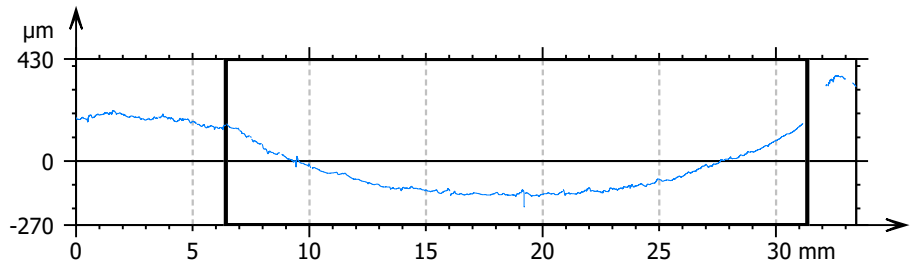
Evaluation length: All λ_c (49)

Height parameters

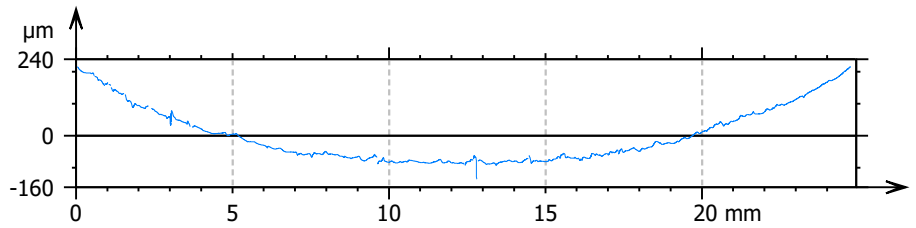
Rq	2.858	μm	
Rsk	-3.071		
Rku	70.29		
Rt	71.97	μm	
Rpt	19.00	μm	Max of values on: All λ_c (49)
Rp	4.980	μm	Average of values on: All λ_c (49)
Rvt	52.97	μm	Max of values on: All λ_c (49)
Rv	5.704	μm	Average of values on: All λ_c (49)
Rzx	71.97	μm	Max of values on: All λ_c (49)
Rz	10.68	μm	Average of values on: All λ_c (49)
Ra	1.699	μm	

Information

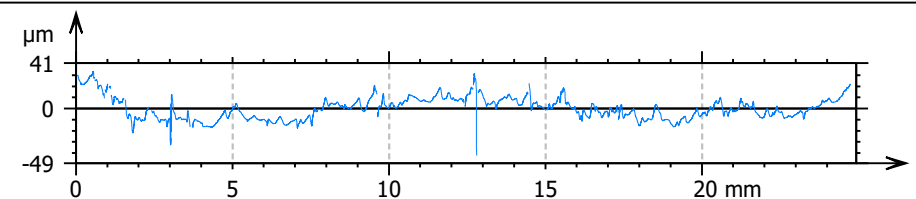
The studiable contains non-measured points. The results...



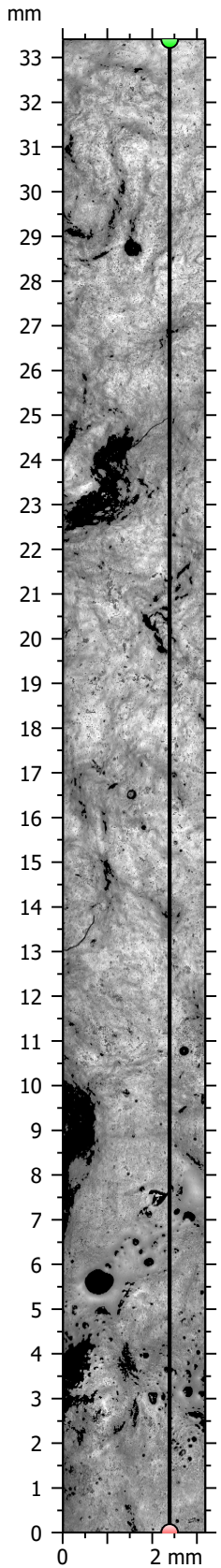
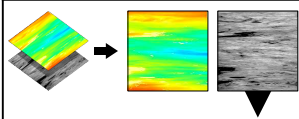
Parameters	Value	Unit
Length	33.44	mm



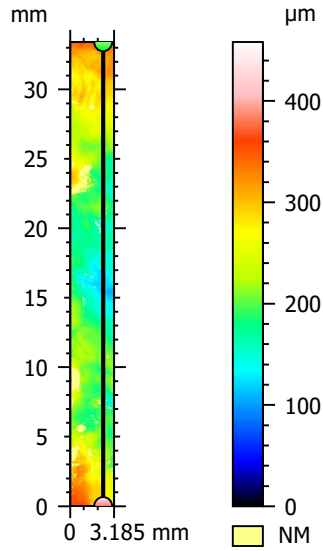
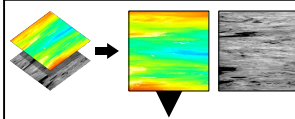
Parameters	Value	Unit
Length	24.93	mm



Parameters	Value	Unit
Length	24.93	mm



Information	
Channel	Image channel



Information	
Channel	Topography channel

LN2 to Dry Ice to Conventional, Trial 2

ISO 21920 - Roughness (S-L)

F: [Workflow] Form removed (LS-poly 2)

S-filter (λ_s): Gaussian, 2.5 μm

L-filter (λ_c): Gaussian, 0.5 mm

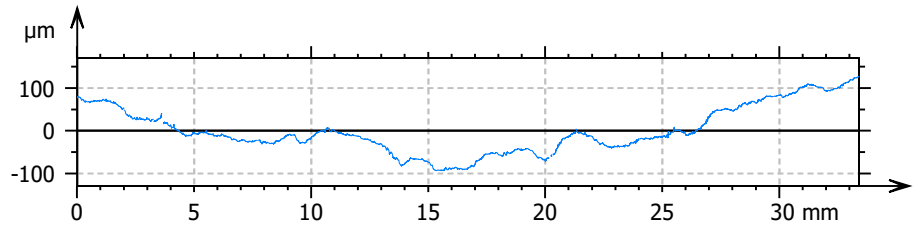
Evaluation length: All λ_c (66)

Height parameters

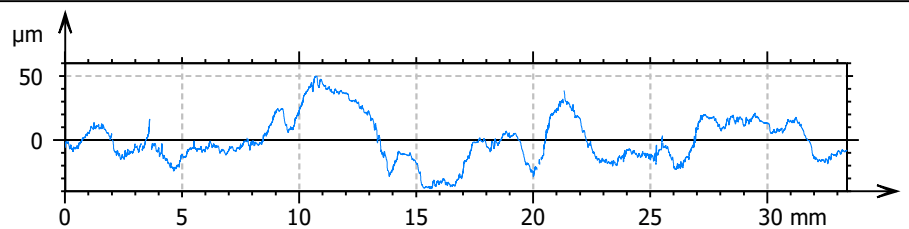
Rq	1.498	μm	
Rsk	0.3420		
Rku	6.722		
Rt	20.66	μm	
Rpt	12.74	μm	Max of values on: All λ_c (6..
Rp	3.295	μm	Average of values on: All $\lambda...$
Rvt	7.924	μm	Max of values on: All λ_c (6..
Rv	2.900	μm	Average of values on: All $\lambda...$
Rzx	20.66	μm	Max of values on: All λ_c (6..
Rz	6.196	μm	Average of values on: All $\lambda...$
Ra	1.119	μm	

Information

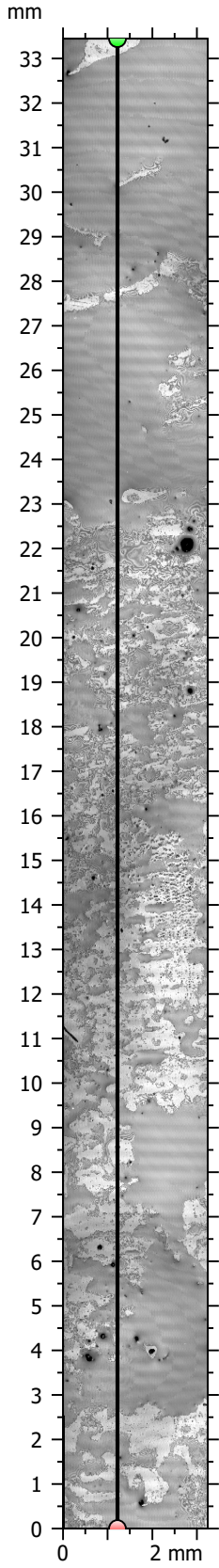
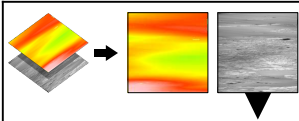
The studiable contains non-measured points. The res...



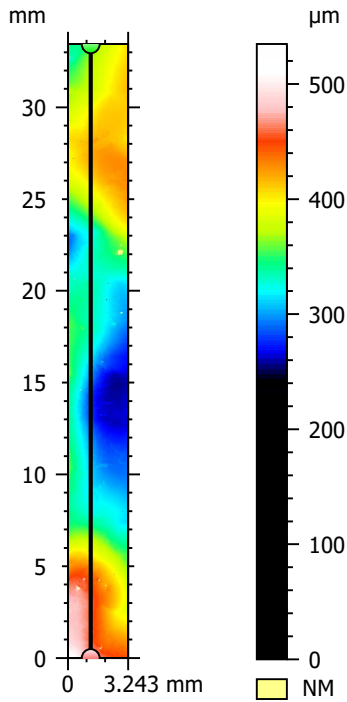
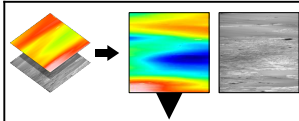
Parameters	Value	Unit
Length	33.41	mm



Parameters	Value	Unit
Length	33.41	mm



Information	
Channel	Image channel



Information	
Channel	Topography channel

FoodChem SA, Trial 1

ISO 21920 - Roughness (S-L)

F: None

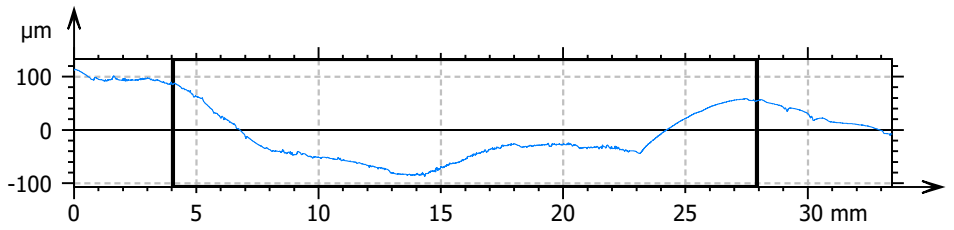
S-filter (λ_s): Gaussian, 2.5 μm

L-filter (λ_c): Gaussian, 0.5 mm

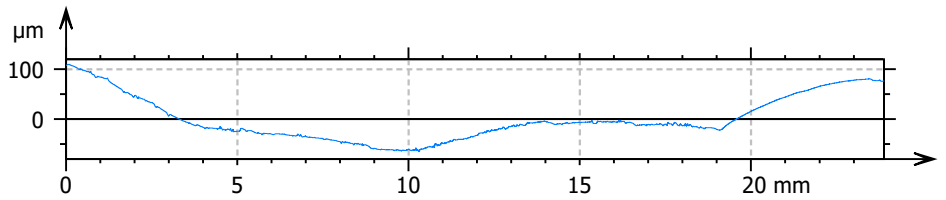
Evaluation length: All λ_c (47)

Height parameters

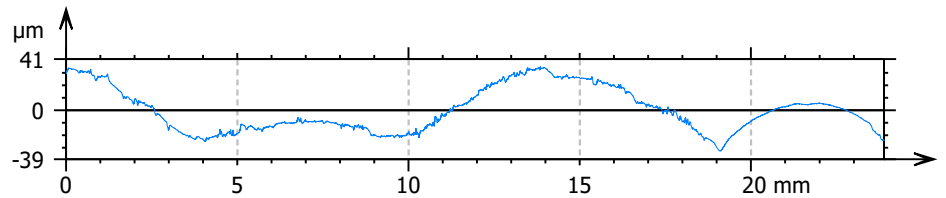
Rq	0.8825	μm	
Rsk	0.01155		
Rku	5.718		
Rt	8.288	μm	
Rpt	4.013	μm	Max of values on: All λ_c (...)
Rp	1.787	μm	Average of values on: All...
Rvt	4.275	μm	Max of values on: All λ_c (...)
Rv	1.812	μm	Average of values on: All...
Rzx	8.288	μm	Max of values on: All λ_c (...)
Rz	3.600	μm	Average of values on: All...
Ra	0.5956	μm	



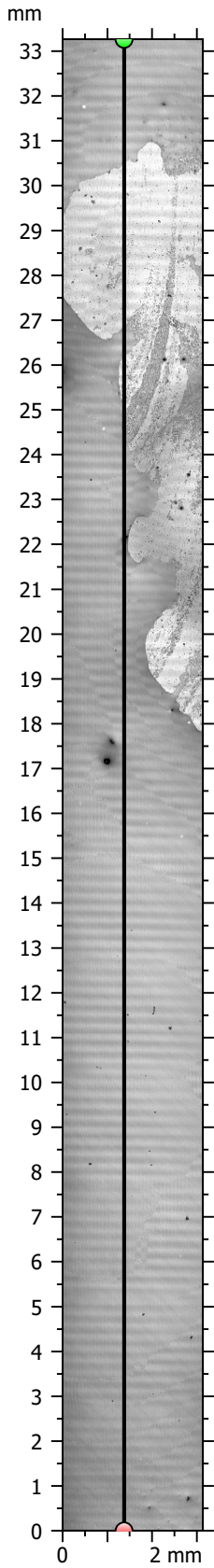
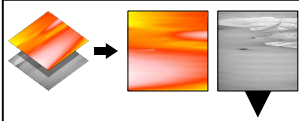
Parameters	Value	Unit
Length	33.45	mm



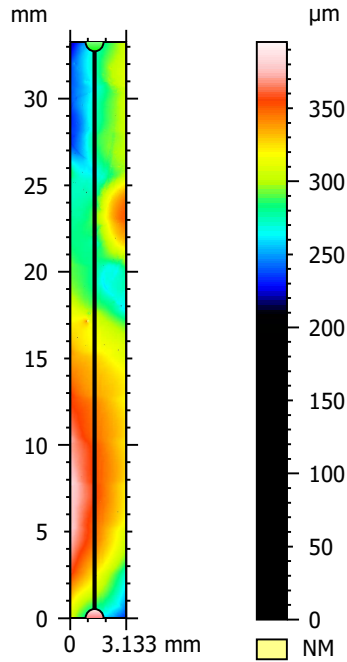
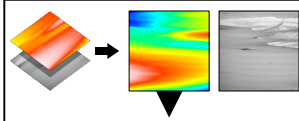
Parameters	Value	Unit
Length	23.88	mm



Parameters	Value	Unit
Length	23.88	mm



Information	
Channel	Image channel



Information	
Channel	Topography channel

FoodChem SA, Trial 1

ISO 21920 - Roughness (S-L)

F: [Workflow] Form removed (LS-circle, R=5053 mm)

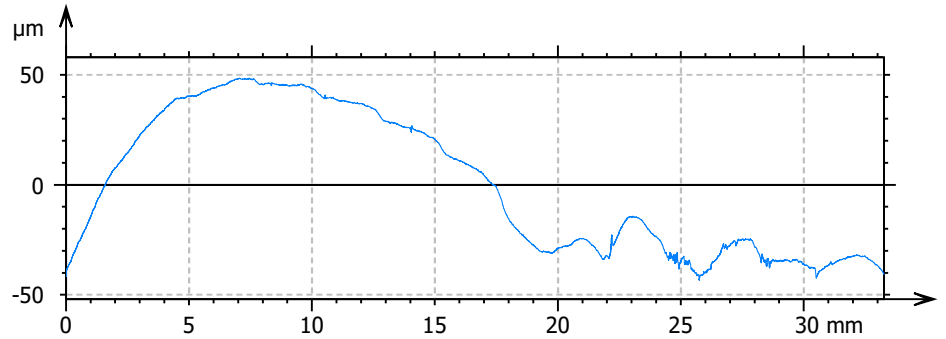
S-filter (λ_s): Gaussian, 2.5 μm

L-filter (λ_c): Gaussian, 0.5 mm

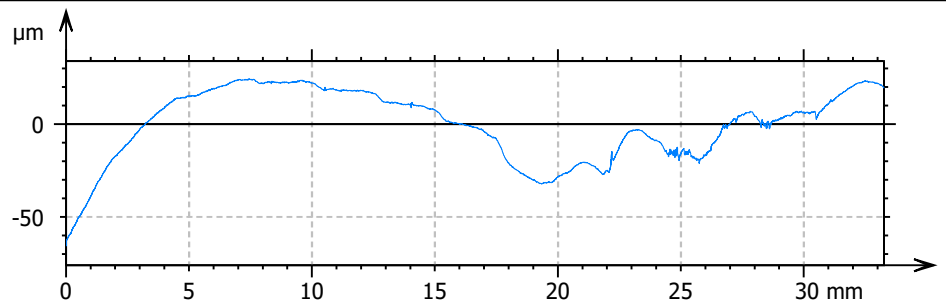
Evaluation length: All λ_c (66)

Height parameters

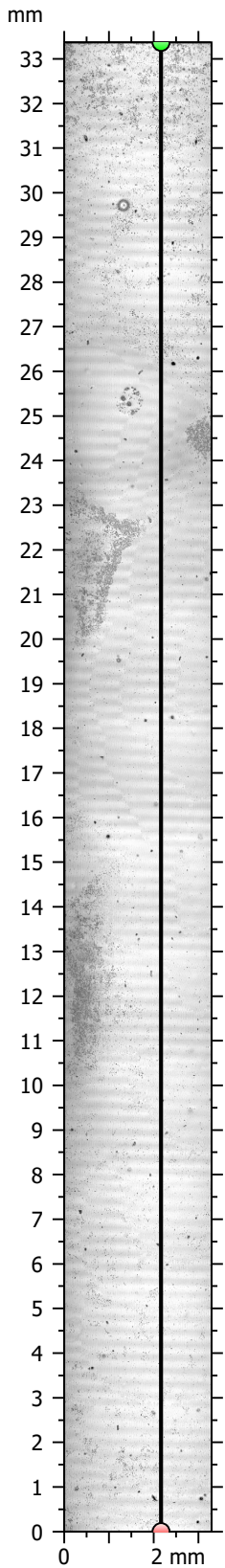
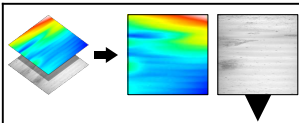
Rq	0.4323 μm	
Rsk	0.4032	
Rku	29.78	
Rt	9.751 μm	
Rpt	5.274 μm	Max of values on: All λ_c (6...
Rp	0.6980 μm	Average of values on: All $\lambda...$
Rvt	4.477 μm	Max of values on: All λ_c (6...
Rv	0.7829 μm	Average of values on: All $\lambda...$
Rzx	9.751 μm	Max of values on: All λ_c (6...
Rz	1.481 μm	Average of values on: All $\lambda...$
Ra	0.2366 μm	



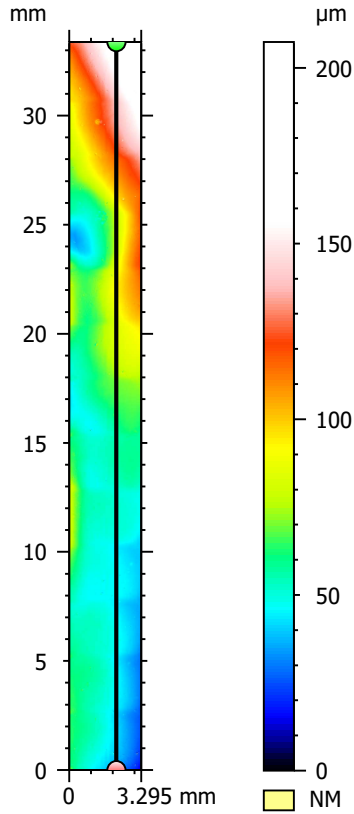
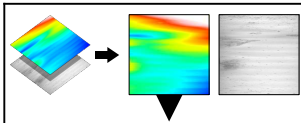
Parameters	Value	Unit
Length	33.26	mm



Parameters	Value	Unit
Length	33.26	mm



Information	
Channel	Image channel



Information	
Channel	Topography channel

High Viscosity SA, Trial 1

ISO 21920 - Roughness (S-L)

F: [Workflow] Form removed (LS-circle, R=3441 mm)

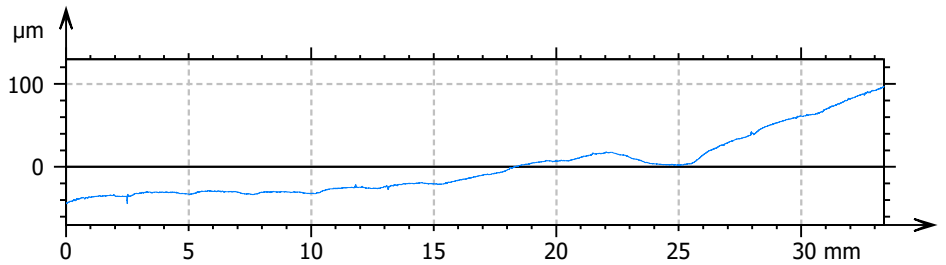
S-filter (λ_s): Gaussian, 2.5 μm

L-filter (λ_c): Gaussian, 0.5 mm

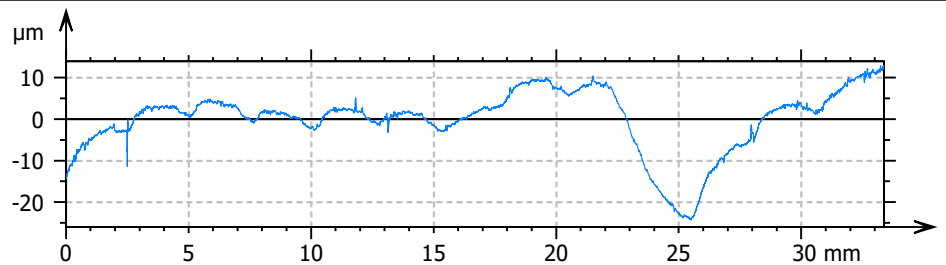
Evaluation length: All λ_c (66)

Height parameters

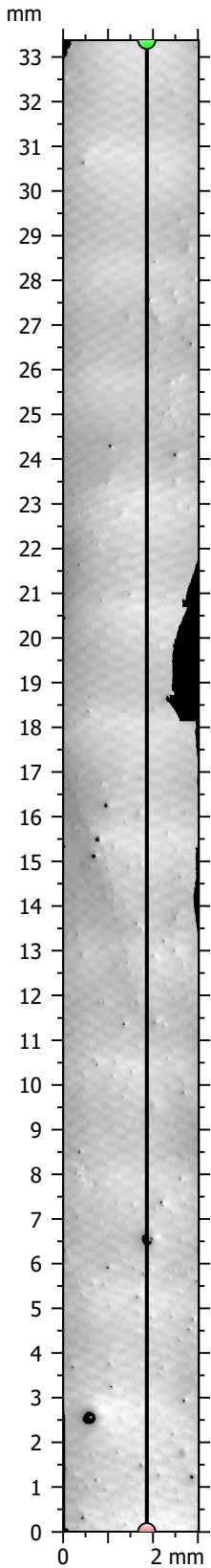
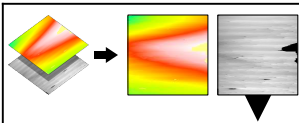
Rq	0.3553	μm	
Rsk	-3.587		
Rku	90.21		
Rt	11.12	μm	
Rpt	2.758	μm	Max of values on: All λ_c (6..
Rp	0.7322	μm	Average of values on: All $\lambda...$
Rvt	8.364	μm	Max of values on: All λ_c (6..
Rv	0.9261	μm	Average of values on: All $\lambda...$
Rzx	11.12	μm	Max of values on: All λ_c (6..
Rz	1.658	μm	Average of values on: All $\lambda...$
Ra	0.2172	μm	



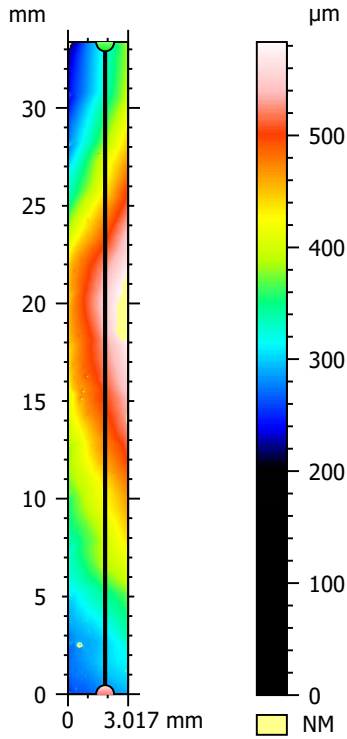
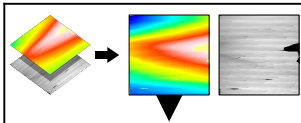
Parameters	Value	Unit
Length	33.38	mm



Parameters	Value	Unit
Length	33.38	mm



Information	
Channel	Image channel



Information	
Channel	Topography channel

High Viscosity SA, Trial 2

ISO 21920 - Roughness (S-L)

F: [Workflow] Form removed (LS-circle, R=447.3 mm)

S-filter (λ_s): Gaussian, 2.5 μm

L-filter (λ_c): Gaussian, 0.5 mm

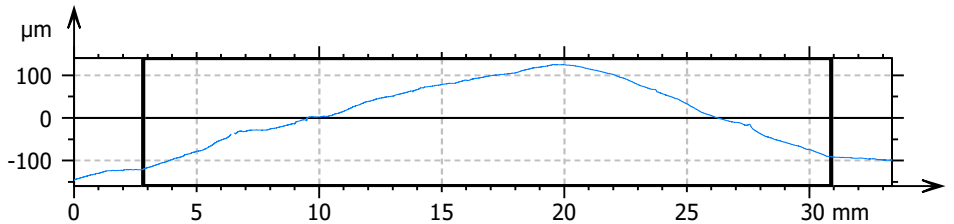
Evaluation length: All λ_c (56)

Height parameters

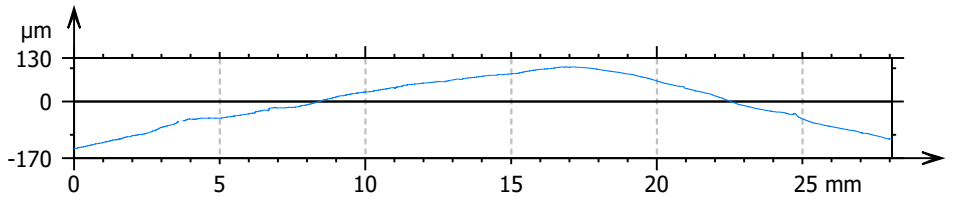
Rq	0.4121 μm	
Rsk	0.2481	
Rku	24.44	
Rt	8.239 μm	
Rpt	3.674 μm	Max of values on: All λ_c (5...
Rp	0.6924 μm	Average of values on: All $\lambda...$
Rvt	4.564 μm	Max of values on: All λ_c (5...
Rv	0.7605 μm	Average of values on: All $\lambda...$
Rzx	8.239 μm	Max of values on: All λ_c (5...
Rz	1.453 μm	Average of values on: All $\lambda...$
Ra	0.2554 μm	

Information

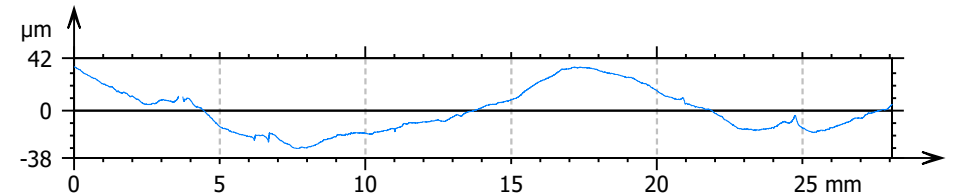
The studiable contains non-measured points. The res...



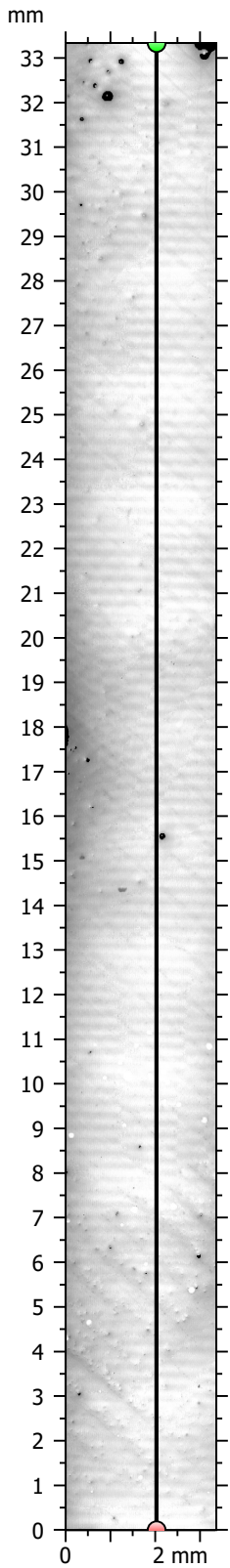
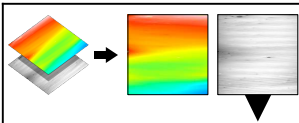
Parameters	Value	Unit
Length	33.37	mm



Parameters	Value	Unit
Length	28.07	mm

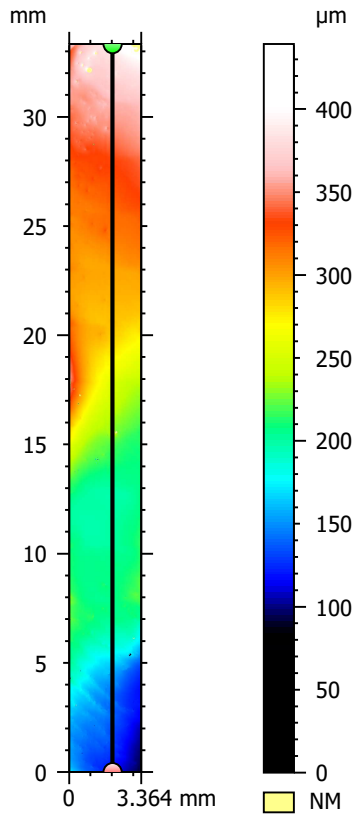
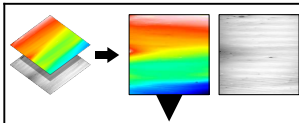


Parameters	Value	Unit
Length	28.07	mm



Information

Channel Image channel



Information

Channel Topography channel

Rehydrated, Trial 1

ISO 21920 - Roughness (S-L)

F: [Workflow] Form removed (LS-poly 1)

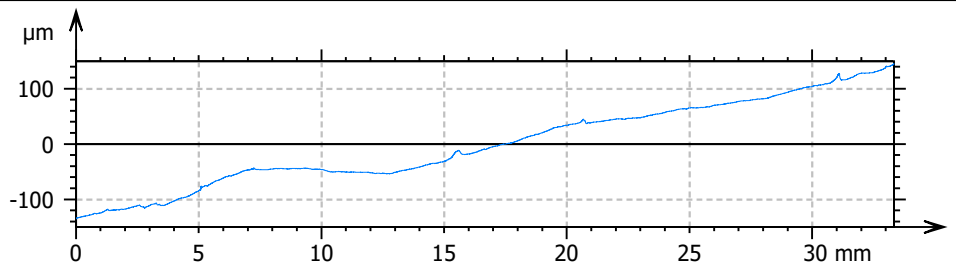
S-filter (λ_s): Gaussian, 2.5 μm

L-filter (λ_c): Gaussian, 0.5 mm

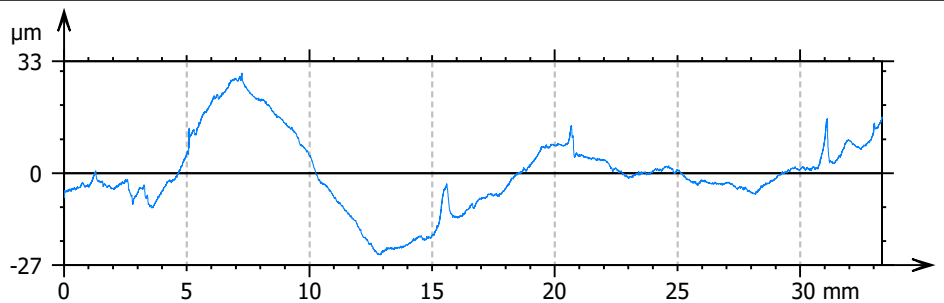
Evaluation length: All λ_c (66)

Height parameters

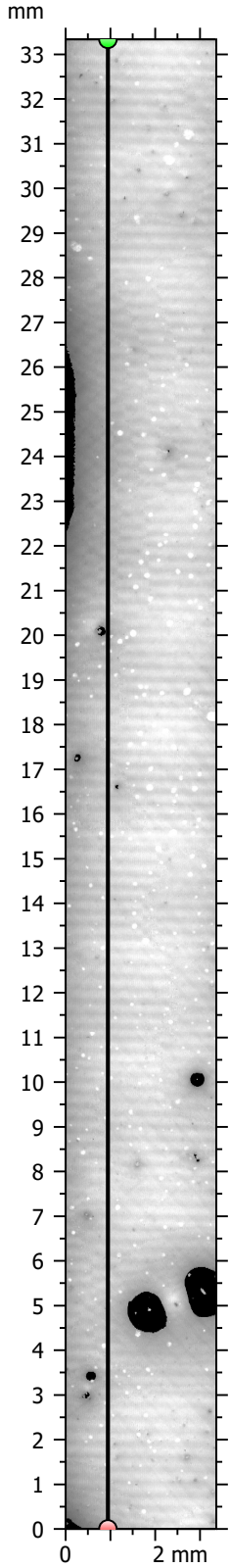
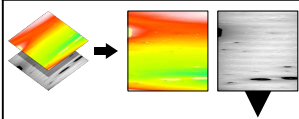
Rq	0.5136	μm	
Rsk	3.454		
Rku	43.17		
Rt	9.950	μm	
Rpt	6.723	μm	Max of values on: All λ_c (6..
Rp	0.8356	μm	Average of values on: All $\lambda...$
Rvt	3.227	μm	Max of values on: All λ_c (6..
Rv	0.7163	μm	Average of values on: All $\lambda...$
Rzx	9.950	μm	Max of values on: All λ_c (6..
Rz	1.552	μm	Average of values on: All $\lambda...$
Ra	0.2777	μm	



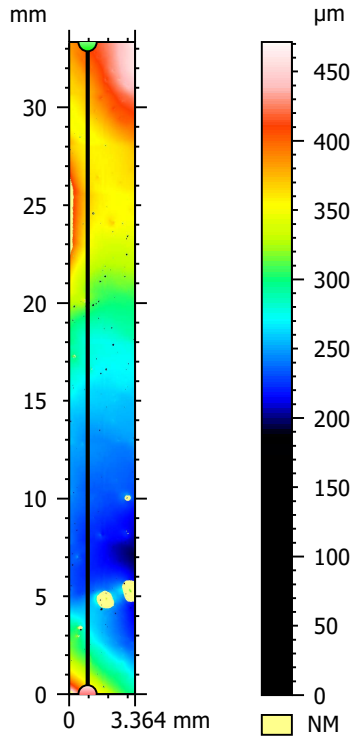
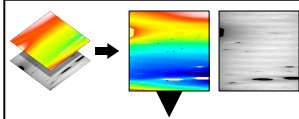
Parameters	Value	Unit
Length	33.34	mm



Parameters	Value	Unit
Length	33.34	mm



Information	
Channel	Image channel



Information	
Channel	Topography channel

Rehydrated, Trial 2

ISO 21920 - Roughness (S-L)

F: [Workflow] Form removed (LS-poly 2)

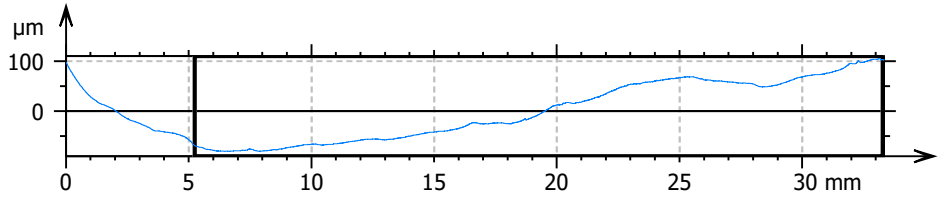
S-filter (λ_s): Gaussian, 2.5 μm

L-filter (λ_c): Gaussian, 0.5 mm

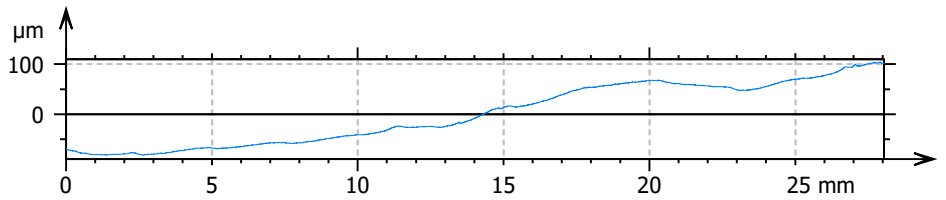
Evaluation length: All λ_c (56)

Height parameters

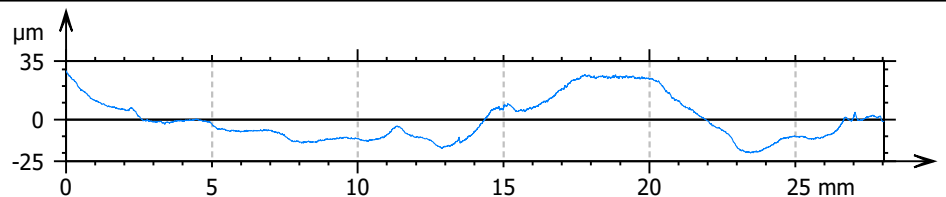
Rq	0.3559 μm	
Rsk	1.129	
Rku	10.75	
Rt	4.562 μm	
Rpt	3.084 μm	Max of values on: All λ_c (5...
Rp	0.7458 μm	Average of values on: All $\lambda...$
Rvt	1.478 μm	Max of values on: All λ_c (5...
Rv	0.6759 μm	Average of values on: All $\lambda...$
Rzx	4.562 μm	Max of values on: All λ_c (5...
Rz	1.422 μm	Average of values on: All $\lambda...$
Ra	0.2525 μm	



Parameters	Value	Unit
Length	33.34	mm



Parameters	Value	Unit
Length	28.04	mm



Parameters	Value	Unit
Length	28.04	mm