

TABLE OF CONTENTS

General Process	2
Basics	3
Search A Location	4
Add A Folder	5
Tools Guide	6
Pins/Placemarks	7
Polygons	8
Paths	9
Measurements	10
History	11
Save Image	12 & 13

General Process

Locate Area of Interest

Locate Area of Interest by typing and address or name of location into the search bar as shown in Slide 4.

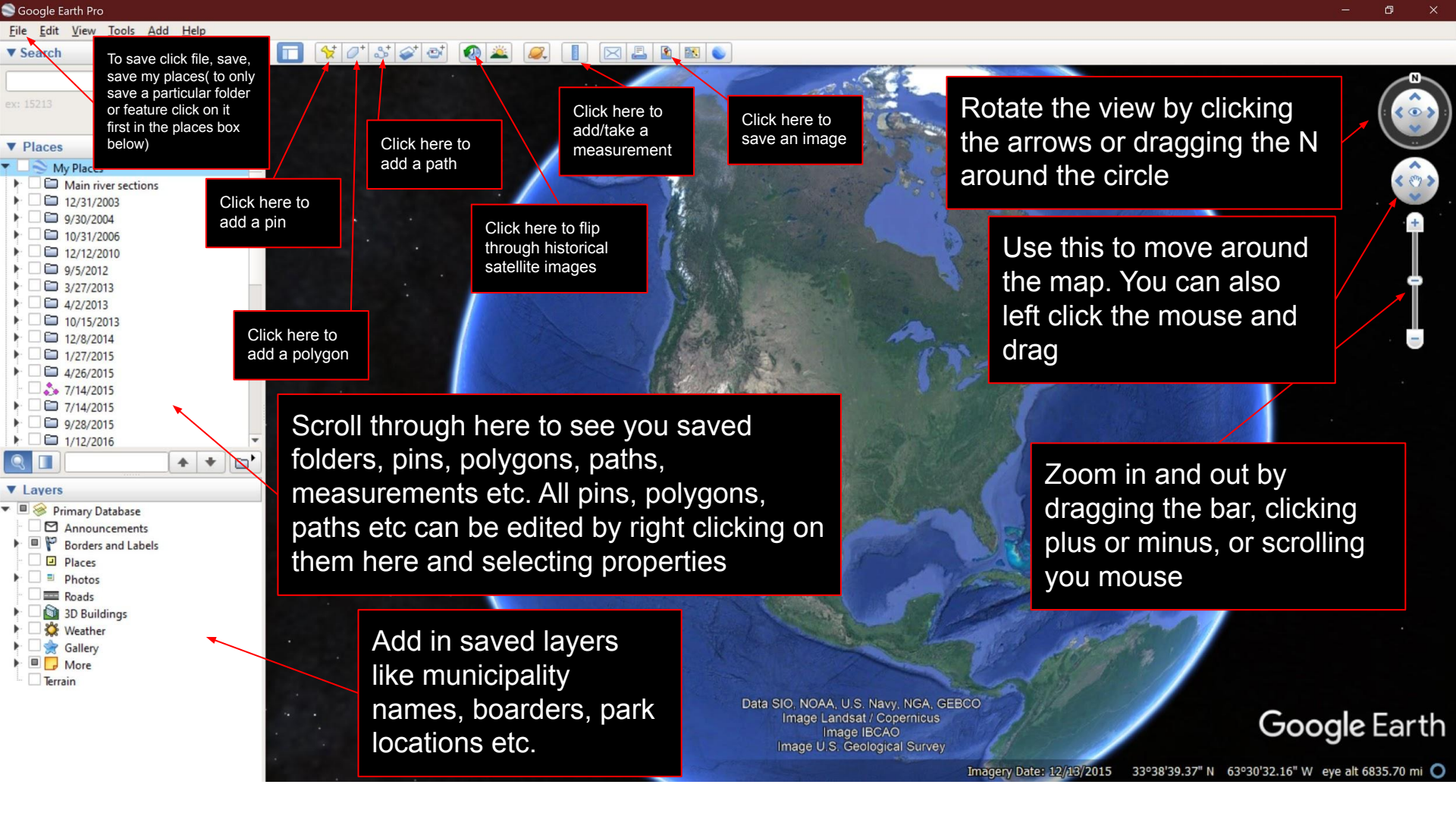
Annotate the Area

Annotate the Area by adding pins/placemarks, polygons, paths, and measurements as needed. These can be added in one location over a series of time intervals or in multiple locations to show a similar change observed. Additional Information on Annotating can be seen on Slides 6-11.

Save an Image

Save an Image after annotating to display changes in a file elsewhere(ex. Prezi or Report). Follow the process on Slides 12-13

*A more detailed description of the process can be seen in the Google Earth Tutorial Video in Supplemental Materials for this project at <https://digital.wpi.edu/> by using the browser to locate Puerto Rico projects and then searching with the project title “La Plata Nature Refuge: Assessing Land Change”



To save click file, save, save my places (to only save a particular folder or feature click on it first in the places box below)

Click here to add a pin

Click here to add a polygon

Click here to add a path

Click here to flip through historical satellite images

Click here to add/take a measurement

Click here to save an image

Rotate the view by clicking the arrows or dragging the N around the circle

Use this to move around the map. You can also left click the mouse and drag

Scroll through here to see you saved folders, pins, polygons, paths, measurements etc. All pins, polygons, paths etc can be edited by right clicking on them here and selecting properties

Zoom in and out by dragging the bar, clicking plus or minus, or scrolling you mouse

Add in saved layers like municipality names, borders, park locations etc.

Data SIO, NOAA, U.S. Navy, NGA, GEBCO
Image Landsat / Copernicus
Image IBCAO
Image U.S. Geological Survey

Google Earth

Imagery Date: 12/13/2015 33°38'39.37" N 63°30'32.16" W eye alt 6835.70 mi



▼ Search
Lago La Plata Search

ex: 15213
Get Directions History

- ▼ Places
- My Places
 - Main river sections
 - 12/31/2003
 - 9/30/2004
 - 10/31/2006
 - 12/12/2010
 - 9/5/2012
 - 3/27/2013
 - 4/2/2013
 - 10/15/2013
 - 12/8/2014
 - 1/27/2015
 - 4/26/2015
 - 7/14/2015
 - 7/14/2015
 - 9/28/2015
 - 1/12/2016

- ▼ Layers
- Primary Database
 - Announcements
 - Borders and Labels
 - Places
 - Photos
 - Roads
 - 3D Buildings
 - Weather
 - Gallery
 - More
 - Terrain

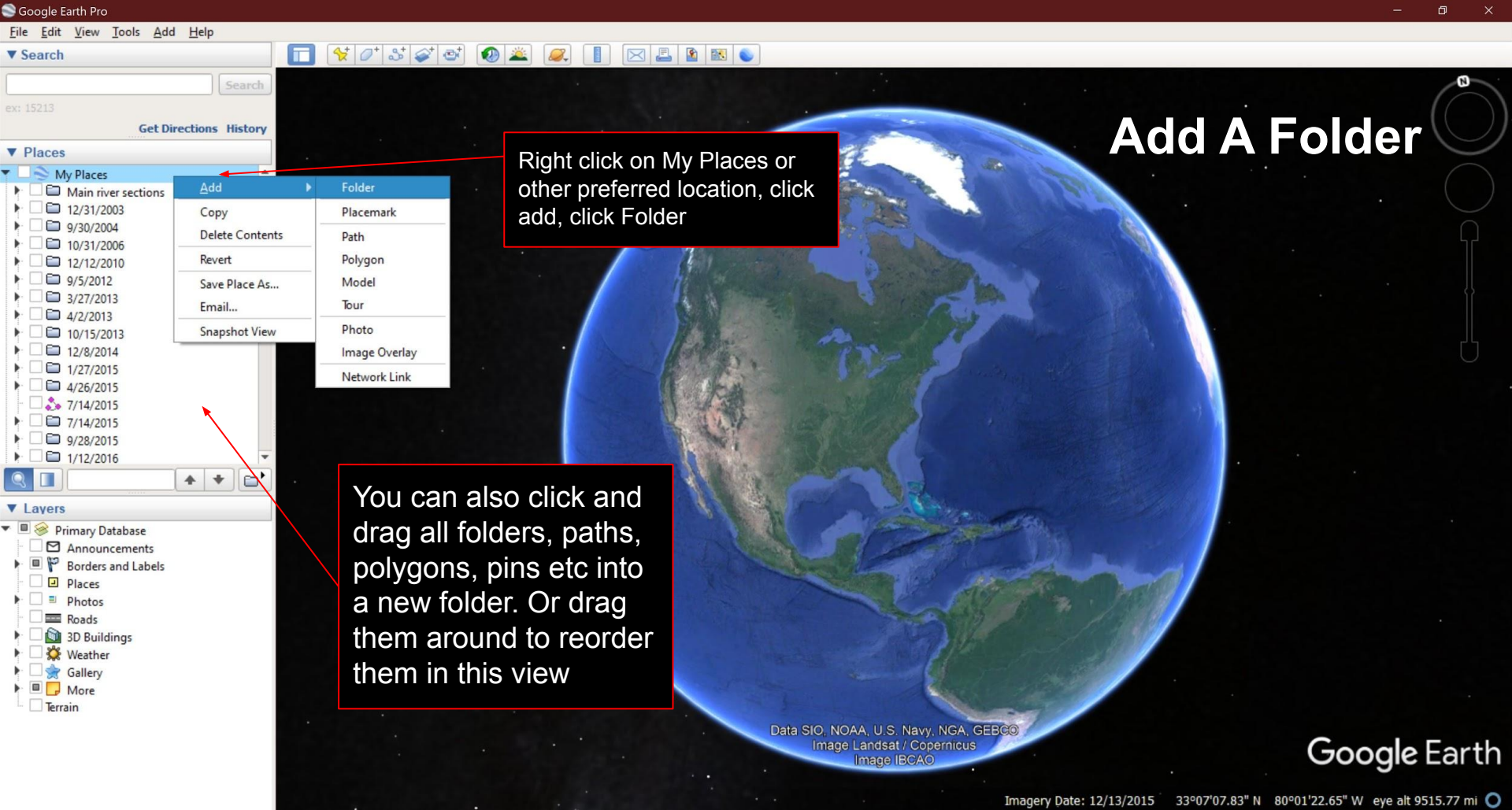
Search the map for the text in the search box

Type location of interest into search bar and click search. The map will automatically move to that searched location

Search A Location



Data SIO, NOAA, U.S. Navy, NGA, GEBCO
Image Landsat / Copernicus
Image IBCAO



Tools Guide

Pins/Placemarks(Slides 7): This tool can be used to mark a particular coordinate or location of interest. Labels on the marking can be used to explain what the location is. For example, marking coordinates and labeling construction site 1.

Polygons(Slide 8): This tool can be used to outline a boundary of an area of interest.

Paths(Slide 9): This tool can be used to trace changes along the river's edge to show change in water level. It can also be used to draw areas of vegetation loss or development.

Measurements(Slide 10): This tool can be used to take measurements of lines(straight), paths, and polygon perimeters or areas.

History(Slide 11): This tool helps you view the same location at different points in time. This helps to see how land, waterways, vegetation and development have h changed. You can also use this tool to view the location before and after a major weather event.

Pins/Placemarks

Name:

Latitude:

Longitude:

Click here to add a pin label

Drag pin to preferred location on map or type in coordinates here

Click here to change icon shape and color(right)

Description **Style, Color** View Altitude

Click here to change color, size, and opacity of pin and pin label

When done click ok



Color: Scale: Opacity:

<http://maps.google.com/mapfiles/kml/pushpin/ylw-pushpin.png>



When done selecting an icon shape and color click ok

Polygons

Click here to add a polygon label

Click here to change color and opacity of polygon line and shaded inner area

Drag cursor or click points in order to form the shape of your desired polygon

Click here to change preference between only outlines, only filled or both

When done click ok

OK

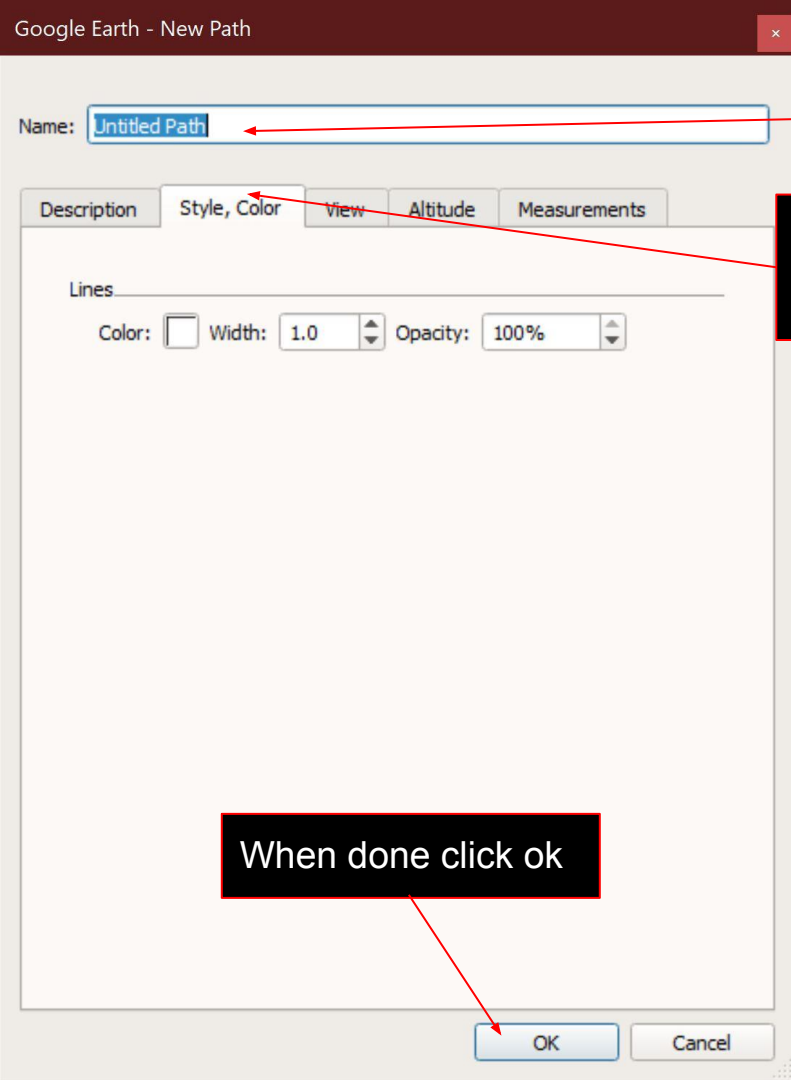
Cancel

Name:

Description Style, Color View Altitude Measurements

Lines
Color: Width: 1.0 Opacity: 100%

Area
Color: Filled+Outlined Opacity: 100%
 Random



Click here to add a path label

Click here to change color and opacity of path

Drag cursor in order to form the shape of your desired path

When done click ok

Paths

Ruler

Select what type of measurement you would like to make

Measurements

x

Line

Path

Polygon

Circle

3D path

3D polygon

Measure the distance between two points on the ground

Map Length:

click point(s) in order to form the shape of your desired measurement

0.00

Kilometers



Ground Length:

0.00

Click here to change units

Heading:

0.00 degrees



Mouse Navigation

Save

Clear

Once done click save and move the measurement from temporary places to your desired folder or click clear to start over

History

▼ Search

Lago La Plata, Toa Alta, Puerto Rico Search

ex: 15213

Get Directions History

Lago La Plata

▼ Places

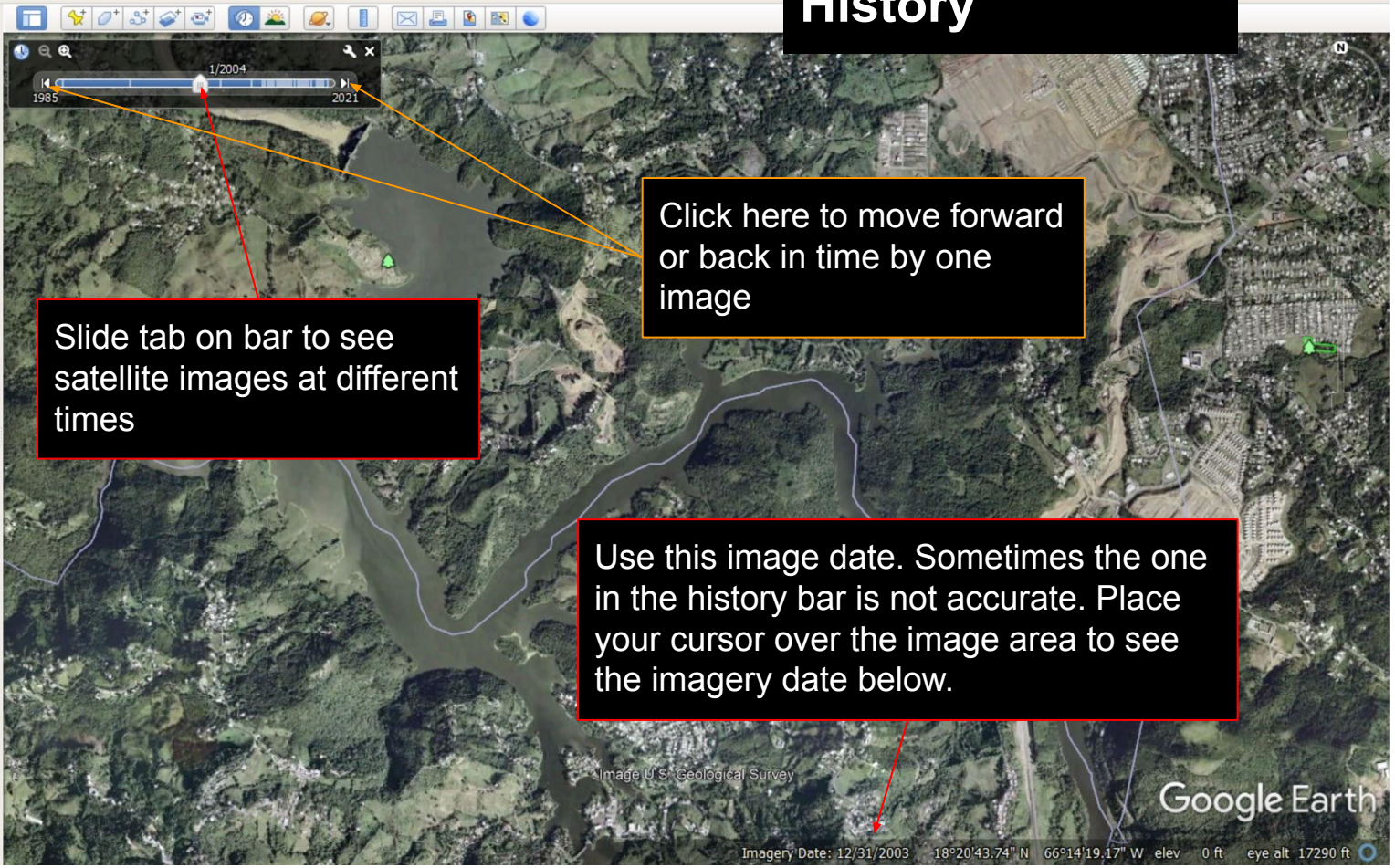
My Places

Main river sections

- 12/31/2003
- 9/30/2004
- 10/31/2006
- 12/12/2010
- 9/5/2012
- 3/27/2013
- 4/2/2013
- 10/15/2013
- 12/8/2014
- 1/27/2015
- 4/26/2015
- 7/14/2015
- 7/14/2015
- 9/28/2015
- 1/12/2016
- 4/25/2017

▼ Layers

- Primary Database
- Announcements
- Borders and Labels
- Places
- Photos
- Roads
- 3D Buildings
- Weather
- Gallery



Slide tab on bar to see satellite images at different times

Click here to move forward or back in time by one image

Use this image date. Sometimes the one in the history bar is not accurate. Place your cursor over the image area to see the imagery date below.

Untitled Map

1/2004

Write a description for your map.

2021

Save Image

Legend

- Feature 1
- Lago La Plata

Click here to edit map title

Click here to edit Legend

Lago La Plata

Google Earth

Image U.S. Geological Survey

1 mi




Elements

- ✓ Title and Description
- ✓ Legend
- ✓ Scale
- ✓ Compass

HTML Area

Scaling: 100%

Styling



Map Configuration

Save... Load...

Save Image

Legend

- Feature 1
- Lago La Plata



Use map options to change view then click save image and select your preferred saved location in documents