

# TABLE FOR FIVE

Alyssa Konsko (AREN), Alex Kuros (BME) Ben Leveillee (CE),  
Nathan Pietrowicz (ME), Austin Shrewsbury (ECE)  
Professor Bakermans (BBT) Professor Eddy (HUA)



**20%** Percent of children in Worcester who go to bed hungry

**46%** Increase in homeless population since 2007

**22%** Increase in homeless families from 2013 to 2014

**\$39 billion** Cut from Supplemental Nutrition Program (Food Stamps)

**37%** Increase in homelessness in Worcester since 2011

**Problem:** Due to the rise in the homeless population in Massachusetts, the financial burden on local shelters has become overwhelming. This burden restricts the quality of services they provide the homeless, such as food quantity, nutritional value and other essentials. If left unassisted these shelters will have an increasingly hard time feeding the individuals under their care.

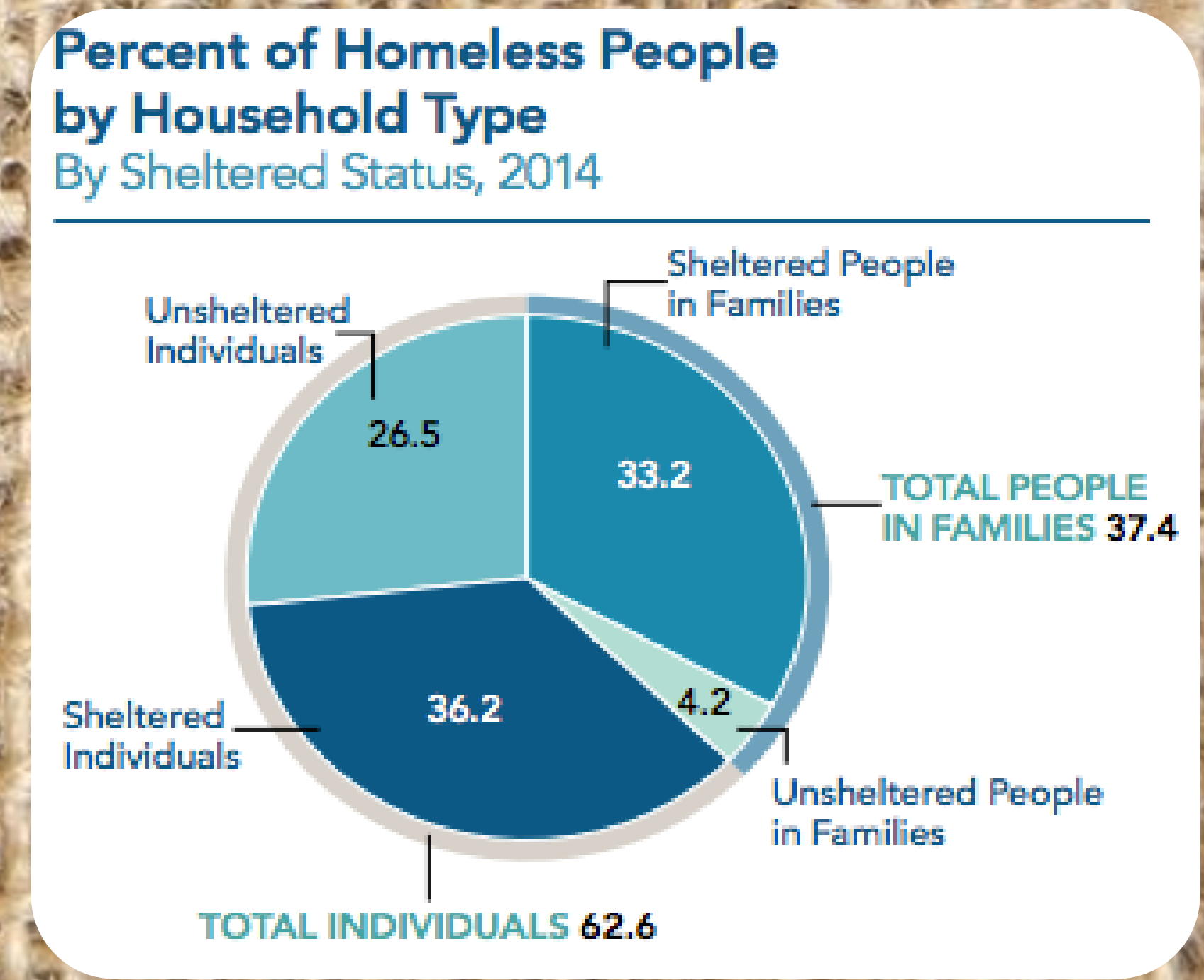
15 families currently living in Friendly House on Elm St

**Friendly House**  
Most residents of Friendly House are either Abused women and children, or recovering from substance abuse

Recipient of the Worcester County non-profit of the year award in 2014

## Road to Success

1. Establish contact with faculty on campus with connections to local shelters.
2. Propose project to dining services
3. Contact FRN about starting chapter on campus
4. Organize transportation for food from dining hall to shelter
5. Set up phone conference with FRN rep and faculty to discuss details



## Solution



Food is packaged and refrigerated overnight at Dining Hall



Food is received and labeled by student volunteers



Food is transported to Friendly House

**References:**  
CMHA. (n.d.). Retrieved December 8, 2015, from [http://www.cmhaonline.org/index.php?option=com\\_content&task=view&id=11&Itemid=174](http://www.cmhaonline.org/index.php?option=com_content&task=view&id=11&Itemid=174)  
Homeless population in Mass. rising faster than any other state - The Boston Globe. (2014, October 30). Retrieved December 8, 2015, from <https://www.bostonglobe.com/business/2014/10/30/homeless-population-massachusetts-rose-past-four-years/WKAJFWX9g0bw7zJd6FP/story.html>  
Goctron, J. (2013). The U.S. Conference of Mayors 2013 Status Report on Hunger & Homelessness. Retrieved October 10, 2015, <http://www.usmayors.org/pressreleases/uploads/2013/1210-report-HH.pdf>