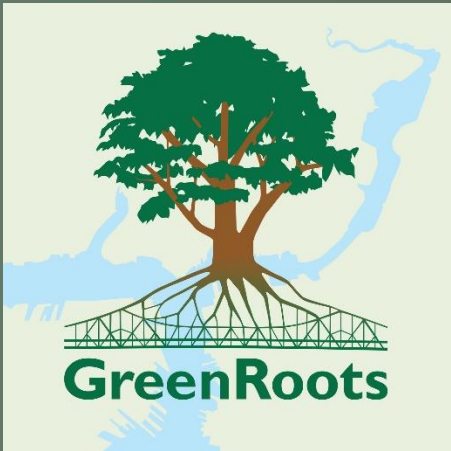


Providing Guidelines to GreenRoots on Creating a Community Land Trust in Chelsea, Massachusetts



Dan Barra (ME), Jon Cohen (ACT), Ada Dogrucu (CS)
 Advisors: Jennifer deWinter and Seth Tuler Sponsor: María Belén (GreenRoots)

Assessing a Community Land Trust in Chelsea

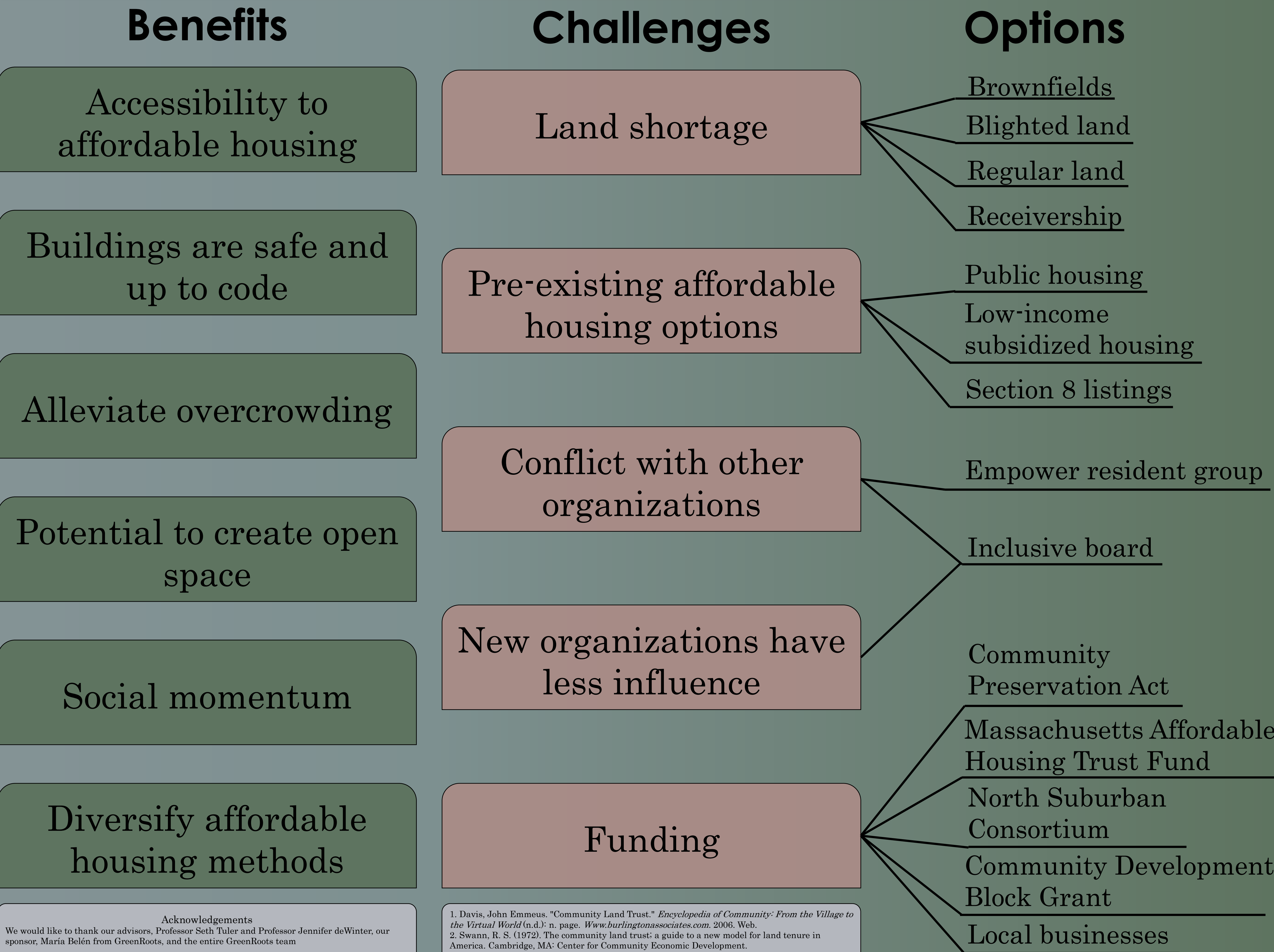
Goal Statement

The goal of this project is to assess options and find stakeholder interest for creating a community land trust to provide affordable housing and community open space in Chelsea.

- ### Gentrification in Chelsea
- Construction of middle class high rise buildings
 - Steady increase in rental costs
 - Citizens no longer renting but subleasing

The CLT Model

Community land trusts provide affordable and secure housing by providing long leases and having prices that are not affected by the fluctuating housing market¹. Community land trusts create affordable housing by developing and stewarding properties that sit atop land owned by the CLT itself².



Acknowledgements
 We would like to thank our advisors, Professor Seth Tuler and Professor Jennifer deWinter, our sponsor, Maria Belén from GreenRoots, and the entire GreenRoots team

1. Davis, John Emmeus. "Community Land Trust." *Encyclopedia of Community: From the Village to the Virtual World* (n.d.): n. page. www.burlingtonassociates.com, 2006. Web.
 2. Swann, R. S. (1972). *The community land trust: a guide to a new model for land tenure in America*. Cambridge, MA: Center for Community Economic Development.