

Improving Youth Engagement in After- School Programs at Banksia Gardens Community Services

Presented by

Deidra Anderson, Sarah Aspinwall,
Luke Deratzou, and Timothy Walsh

12.12.2022



71-81

Acknowledgement of Country

We would like to begin by acknowledging the traditional owners of the land on which we meet today, the Wurundjeri People of the Kulin Nation and pay our respects to elders past, present, and emerging.

Meet the Team



Deidra Anderson



Sarah Aspinwall

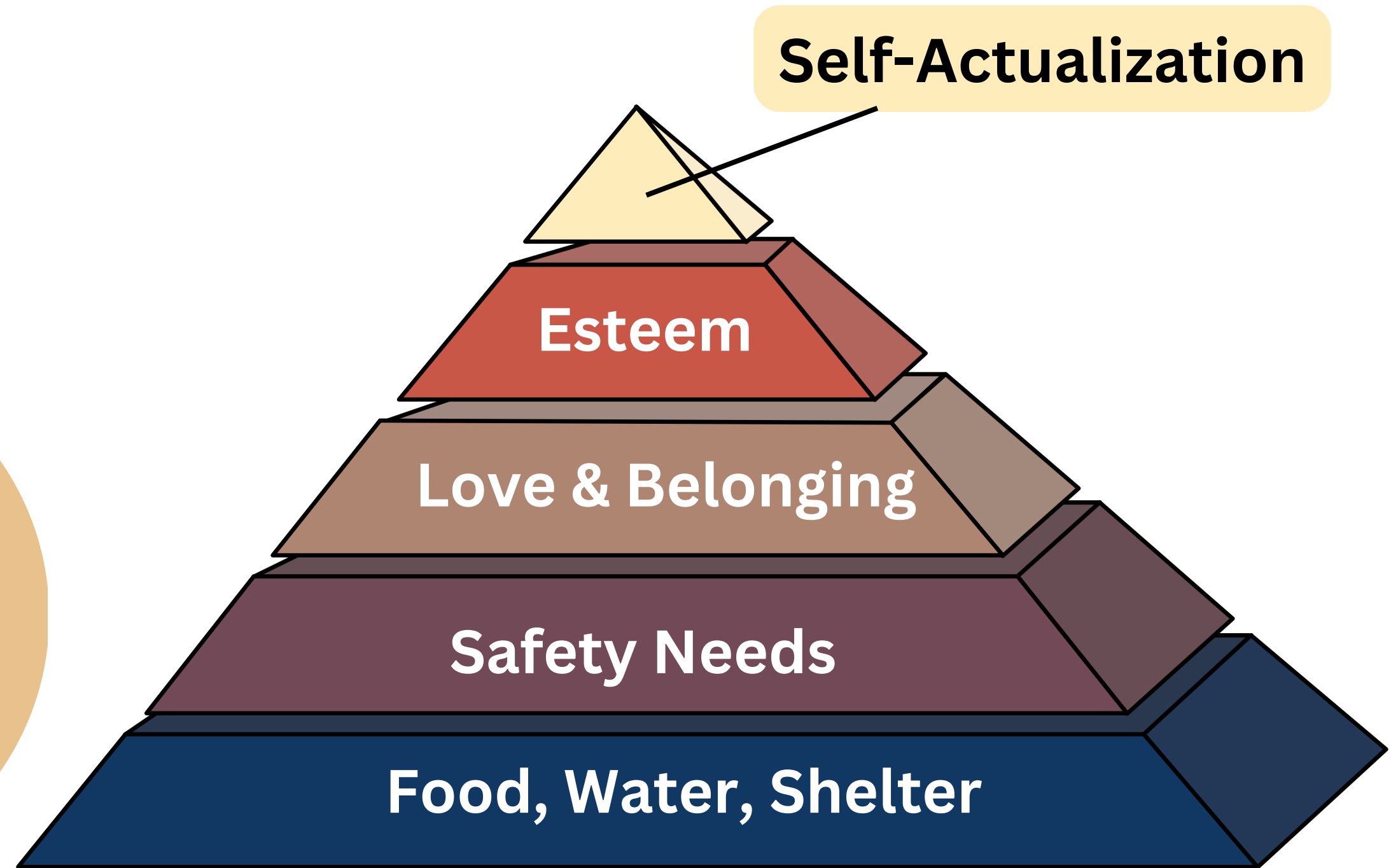
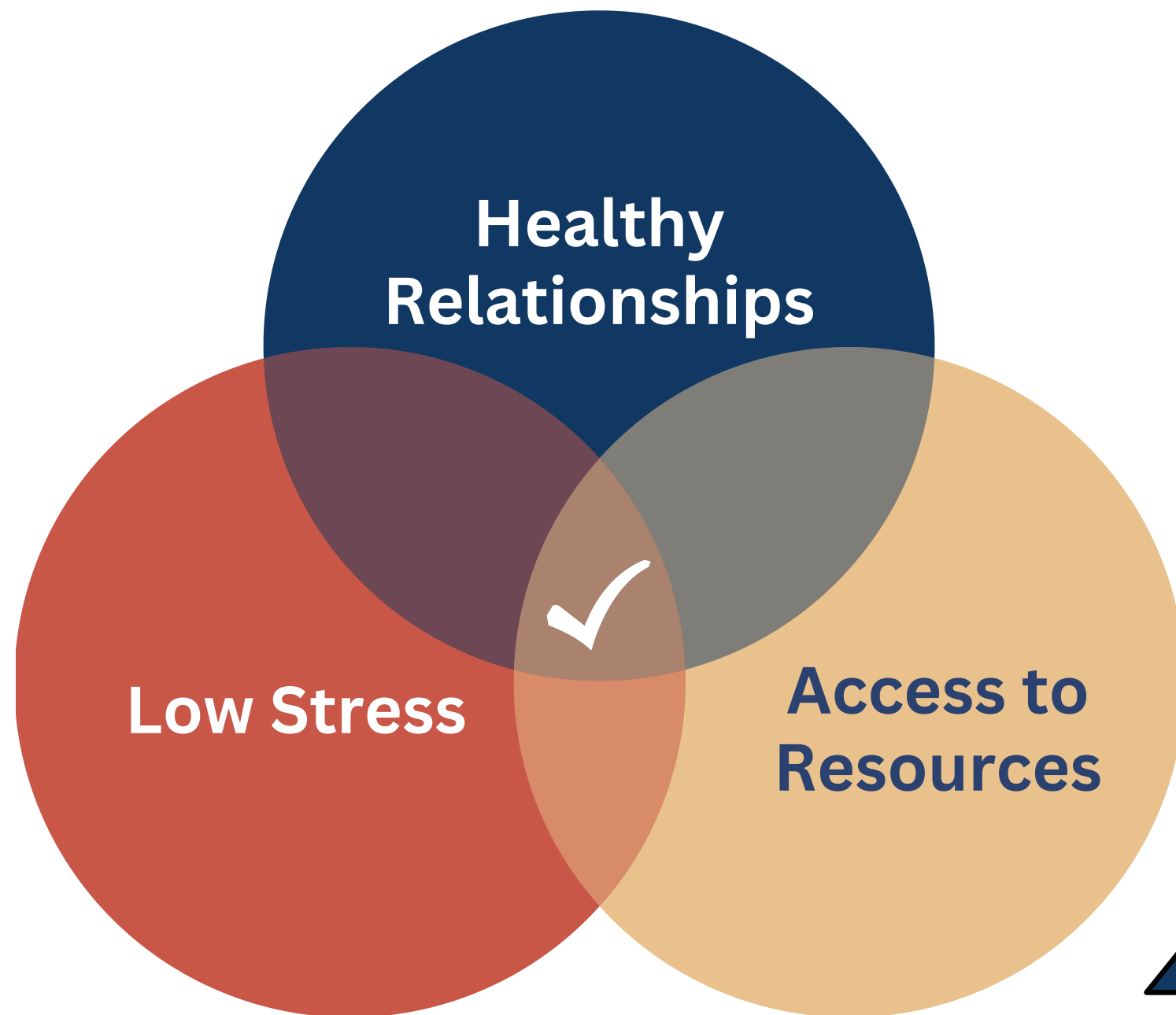


Luke Deratzou

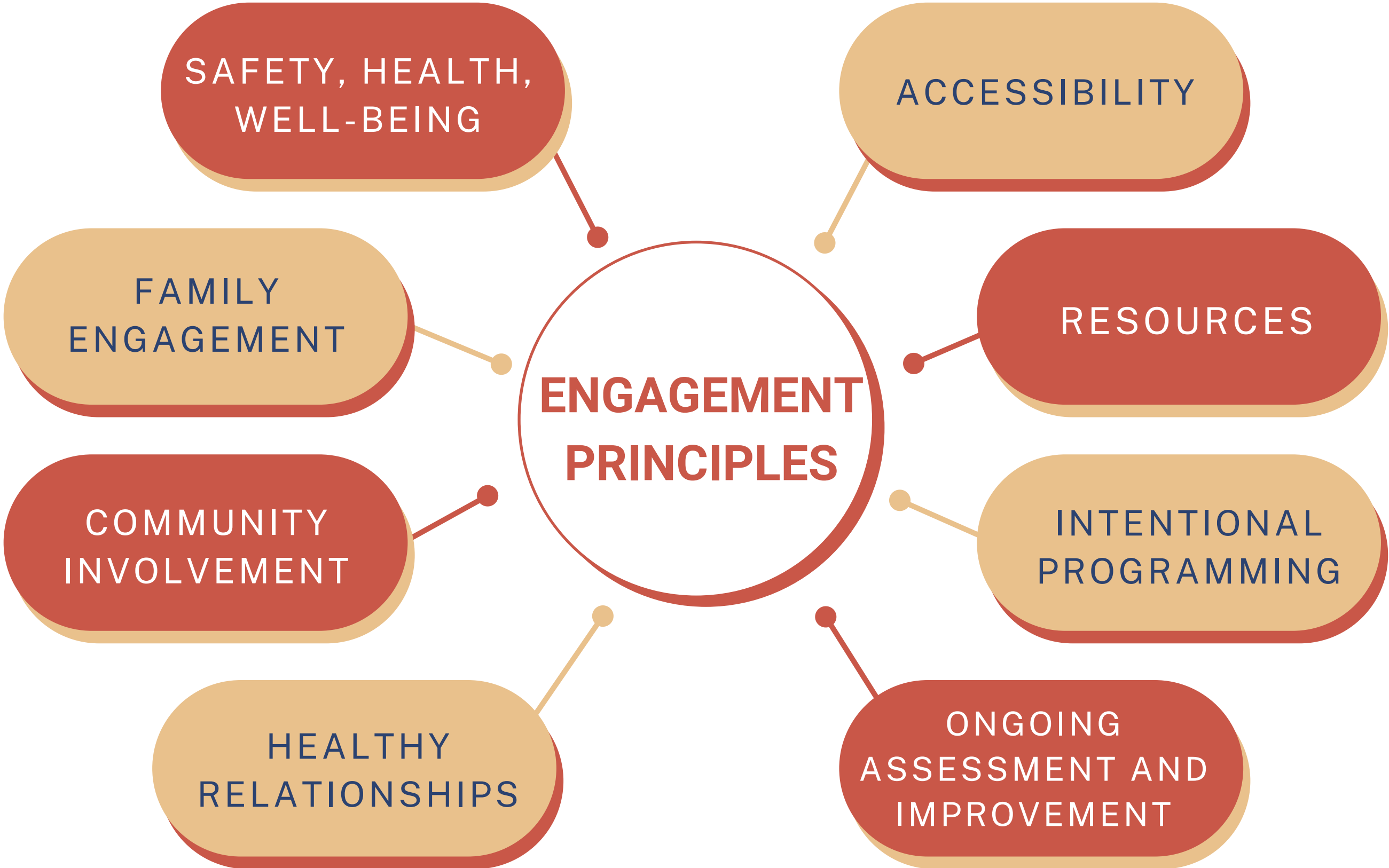


Tim Walsh

Poverty Plays a Role in Brain Development, Engagement, and Learning



Many Key Factors Contribute to Engagement Success



After-School Programs can Increase the Opportunities and Success of Children



CONFIDENCE



HIGHER
STANDARDS



STAY IN SCHOOL



JOB + SUCCESS

Objectives

1 Identify After-School Offerings in the Northern Region

2 Assess the Needs, Struggles, and Interest of Children

3 Understand Engagement / Vision of Stakeholders at Banksia

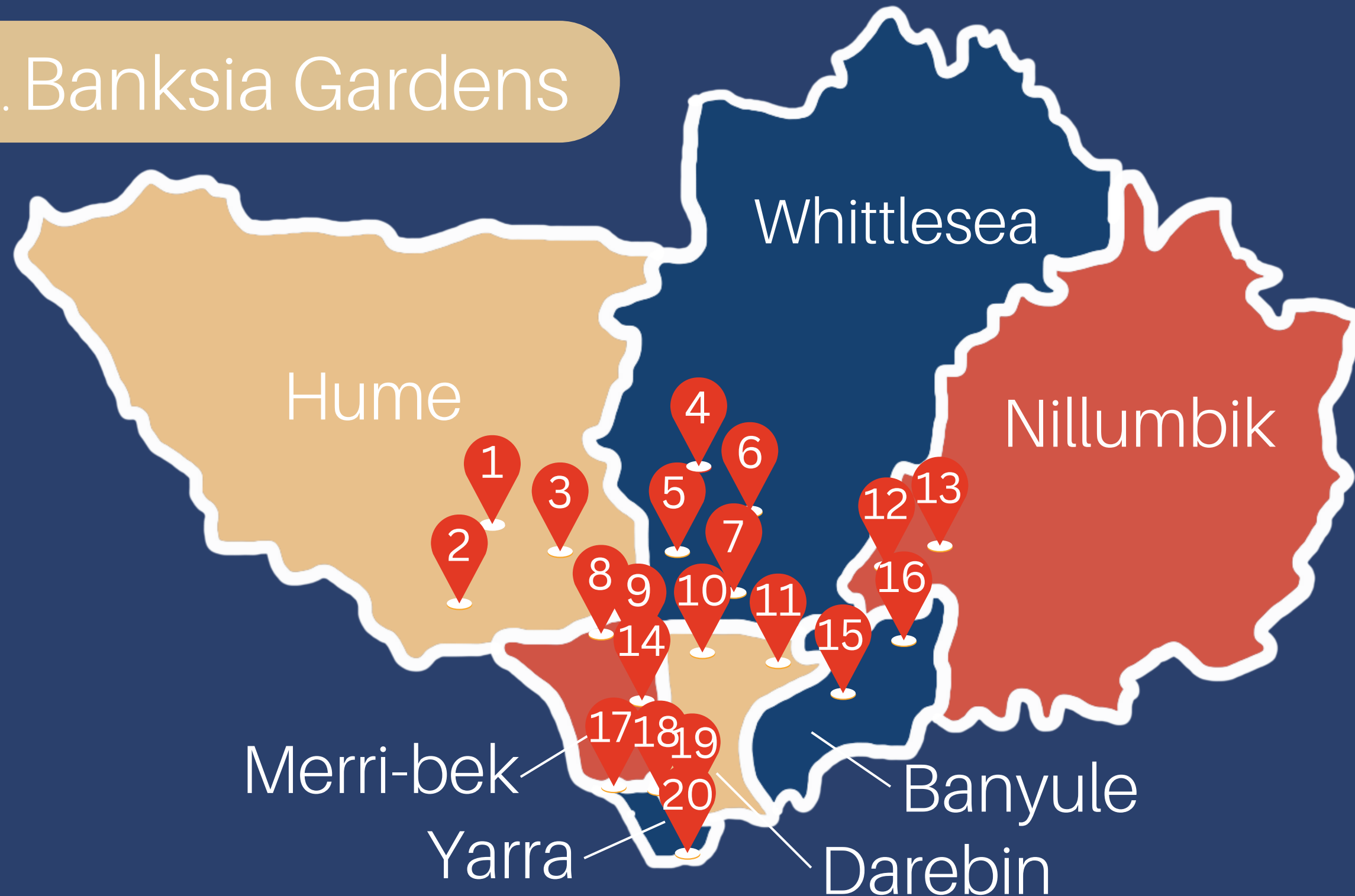
4 Analyze Data to Produce Recommendations

Identify After-School Offerings in the Northern Region

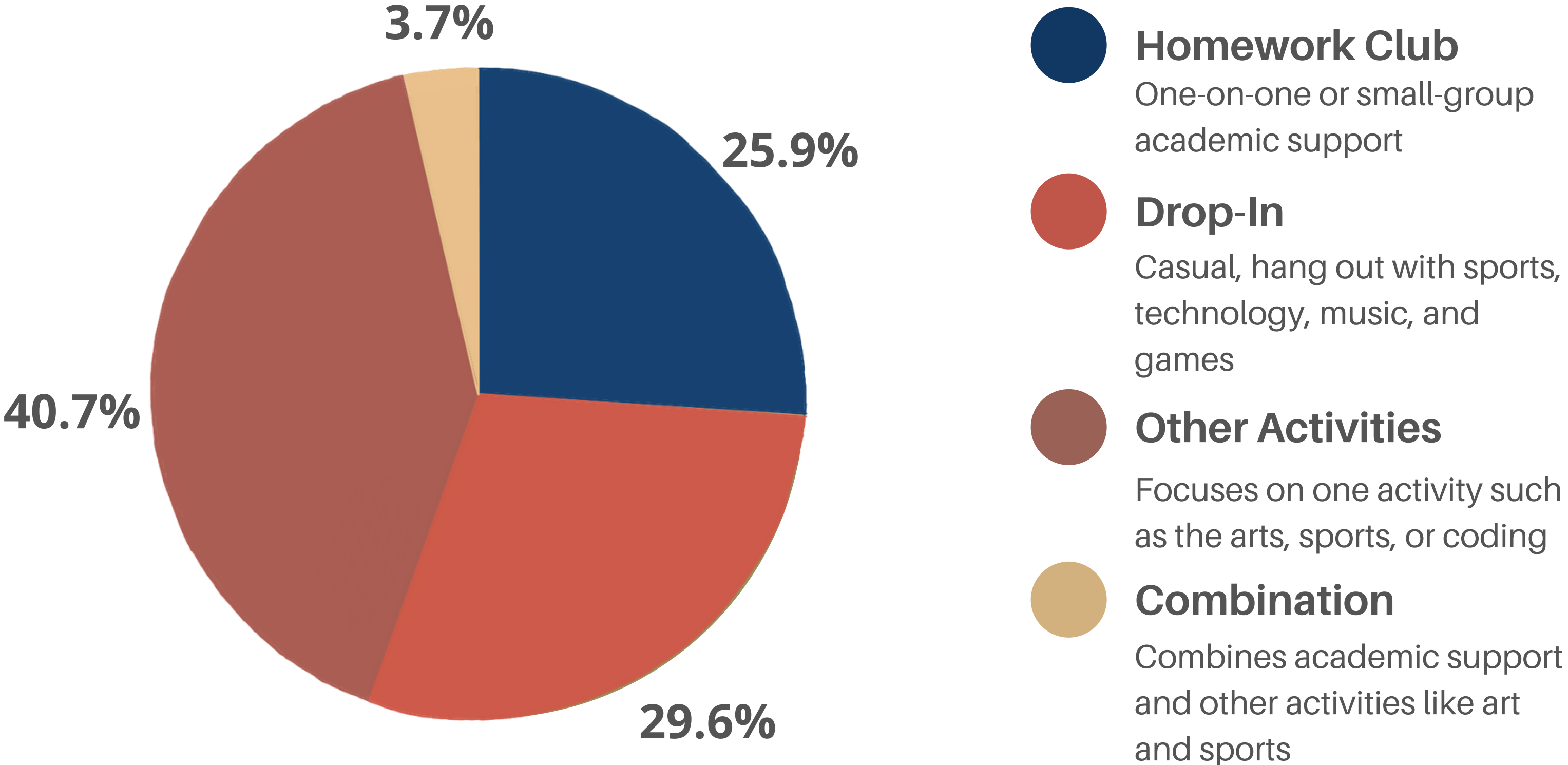


The Northern Region of Melbourne has Many After-School Enrichment Programs

1. Banksia Gardens



Few Programs in the Northern Region Appeal to all of the Struggles, Needs, and Interests of Children



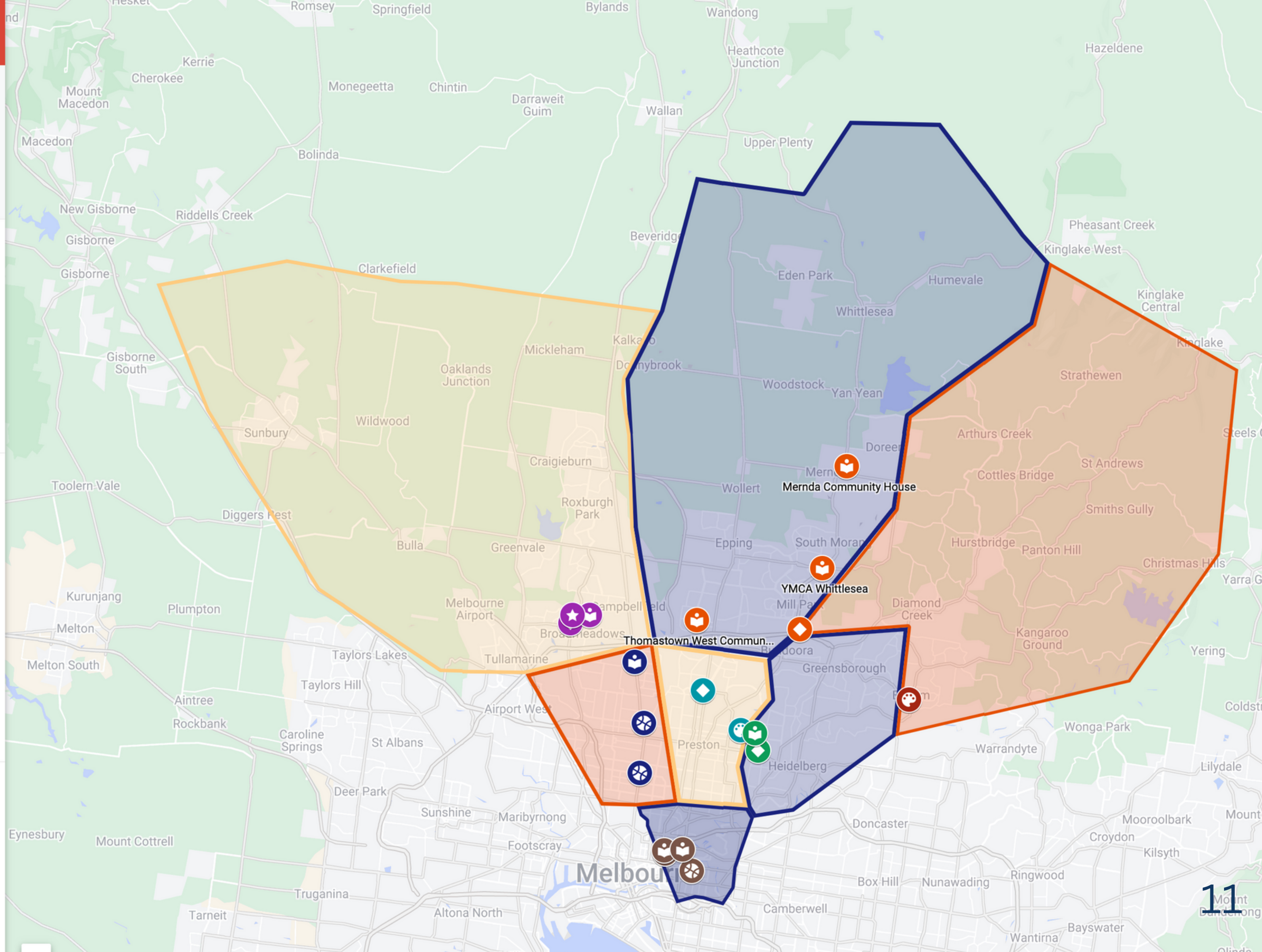
▼ An interactive map of after-school programs in the Northern Region of Melbourne, including descriptions of services offered and contact
52 views
Published yesterday at 12:39 PM
[SHARE](#) [EDIT](#)

☑️ **Northern Melbourne After-School Programs**

- ▼ Fawkner Neighborhood House
- Don Bosco Youth Center
- Oxygen Youth Space
- The Hub @ Northland
- ... 15 more

☑️ **LGA Layer**

- Moreland
- Whittlesea
- Darebin
- Hume
- Banyule
- Nillumbik
- Yarra



[Map Link](#)

Assess the Struggles and Needs of Youth in the Local Community

Interviewed
Experts



Observed
Child Focus
Group



Visited Primary
Schools and
After-School
Programs



Children Share Common Struggles at Home that Affect Engagement



1.

Language Barriers

2.

Lack of Individual Support

3.

Obligations/Siblings

4.

Disruptions/Distractions

5.

Lack of Resources

6.

Too Much Screen Time

Identified Needs for Children in the Community:

1 Exposure to English

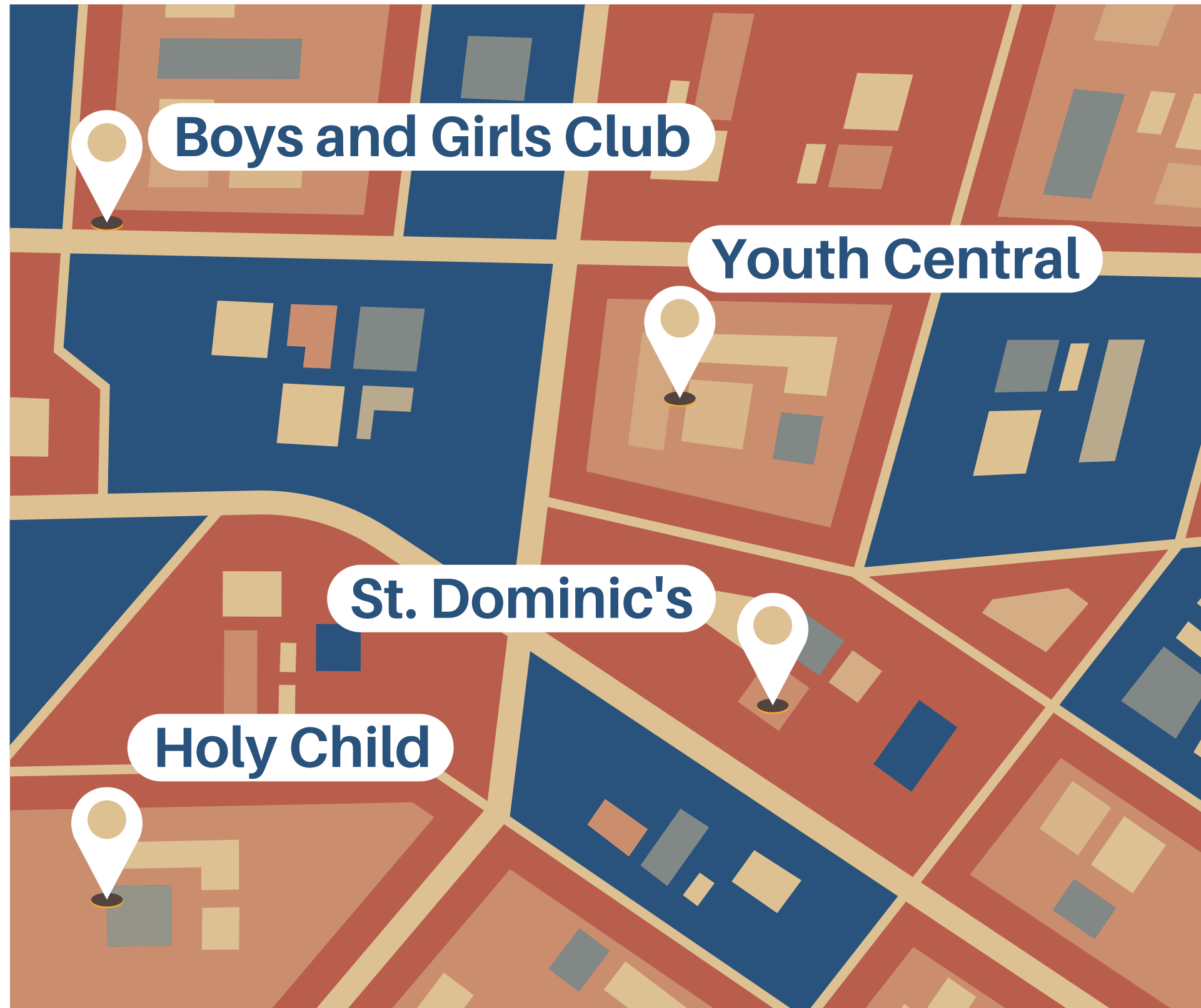
2 Proper Nutrition and Eating

3 Mentorship and Connection

4 Structure and Schedule



After-School Programs Increase Engagement Through a Strategic Structure



Engaging Activities

Separated Academic Support

Individual Emotional Support

Language Support

**UNDERSTAND THE
LEVEL OF ENGAGEMENT
AND VISION OF
STAKEHOLDERS AT
BANKSIA GARDENS'
STUDY GROUP**

**Interviewed Banksia
Gardens' Program Directors**

**Conducted a Focus
Group with Children**

**Distributed an Activity
Interest Survey**

**Observed Study Group
Sessions**

Child Interest Survey

1. Circle the activities you would like to do after school:



Cooking



Theater



Gardening



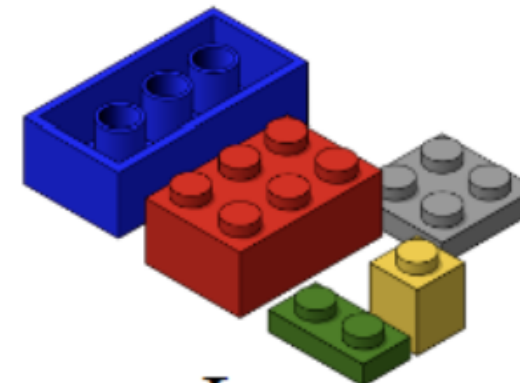
Dance



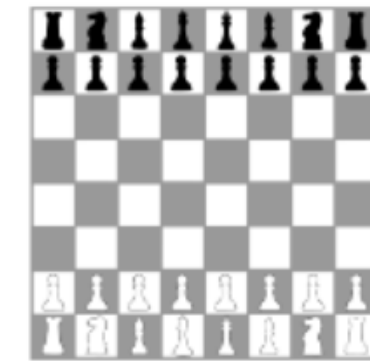
Art



Music



Legos



Chess



Board Games



Science

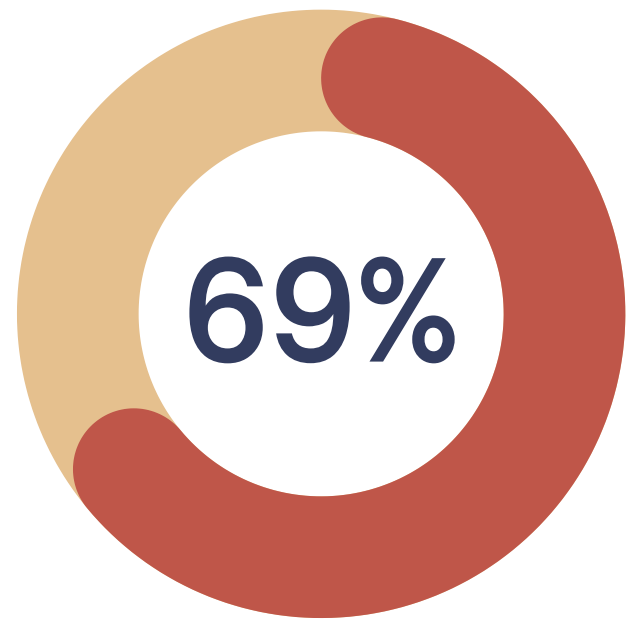


Coding

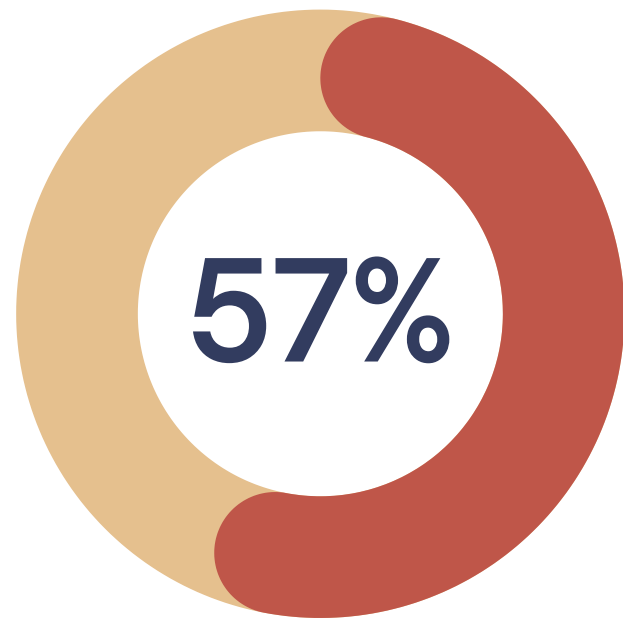


Sports

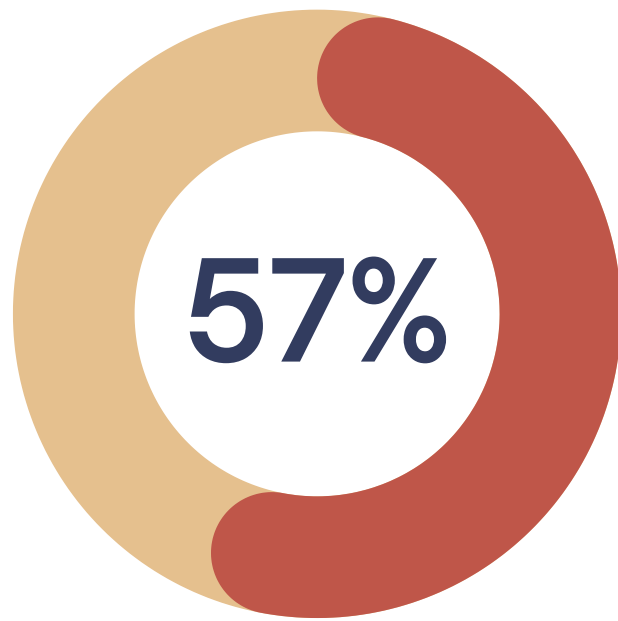
Children in Hume Want Hands-On Activities



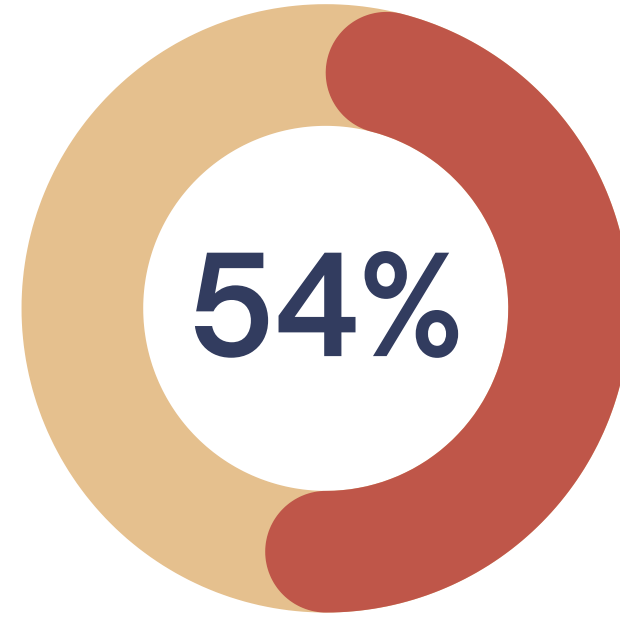
Interested in
Art



Interested in
Legos



Interested in
Sports



Interested in
Science



Interested in
Cooking

5 Most Popular Activities Based on Student Survey (N=54)

Strengths of Banksia Gardens' Study Group

1 Many Literacy Tools

2 Variety of Choices

3 High Attendance

4 Many Attentive Volunteers

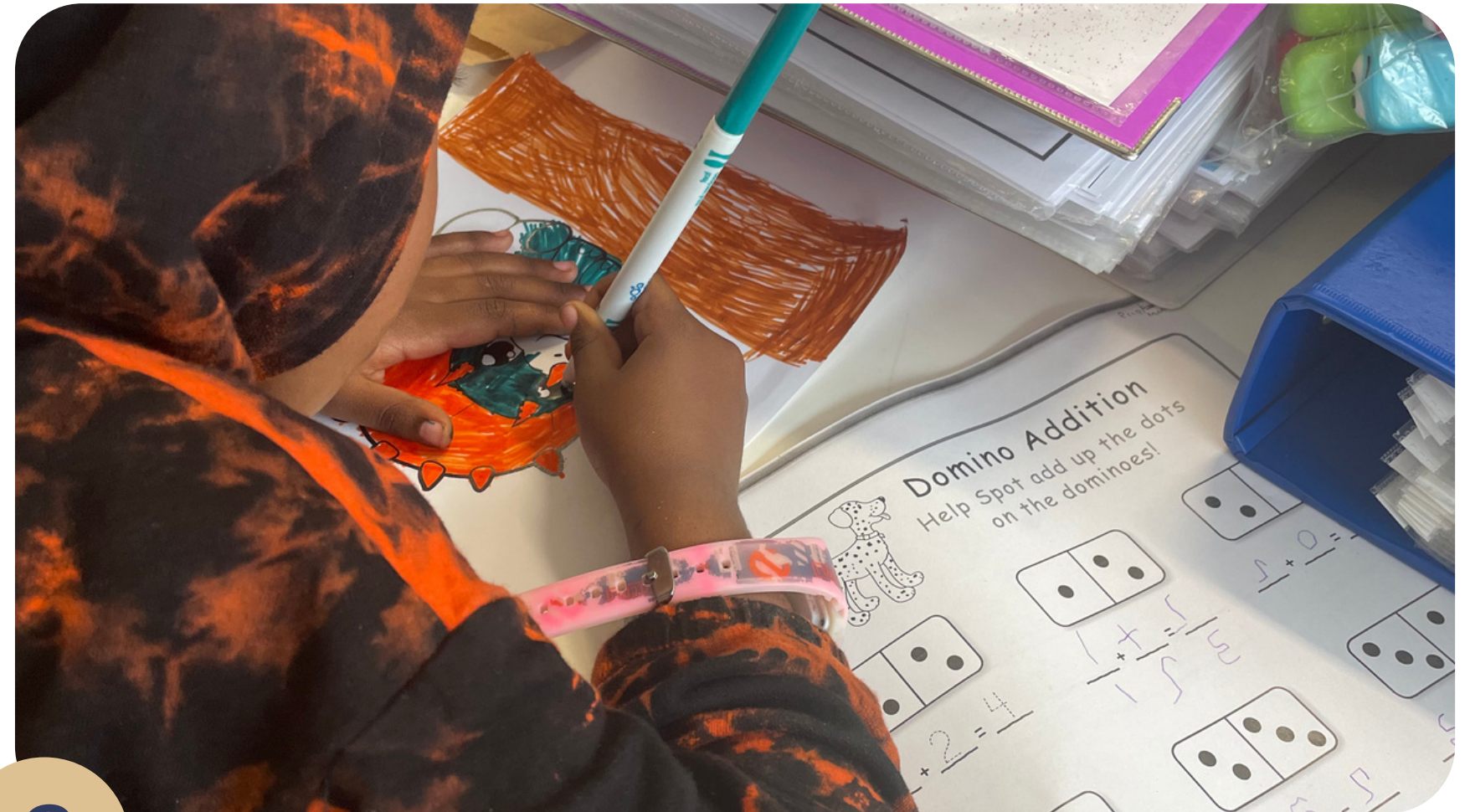


Recommendations for Banksia Gardens Youth Services



1

Incorporate More Literacy Options Throughout the Facility



2

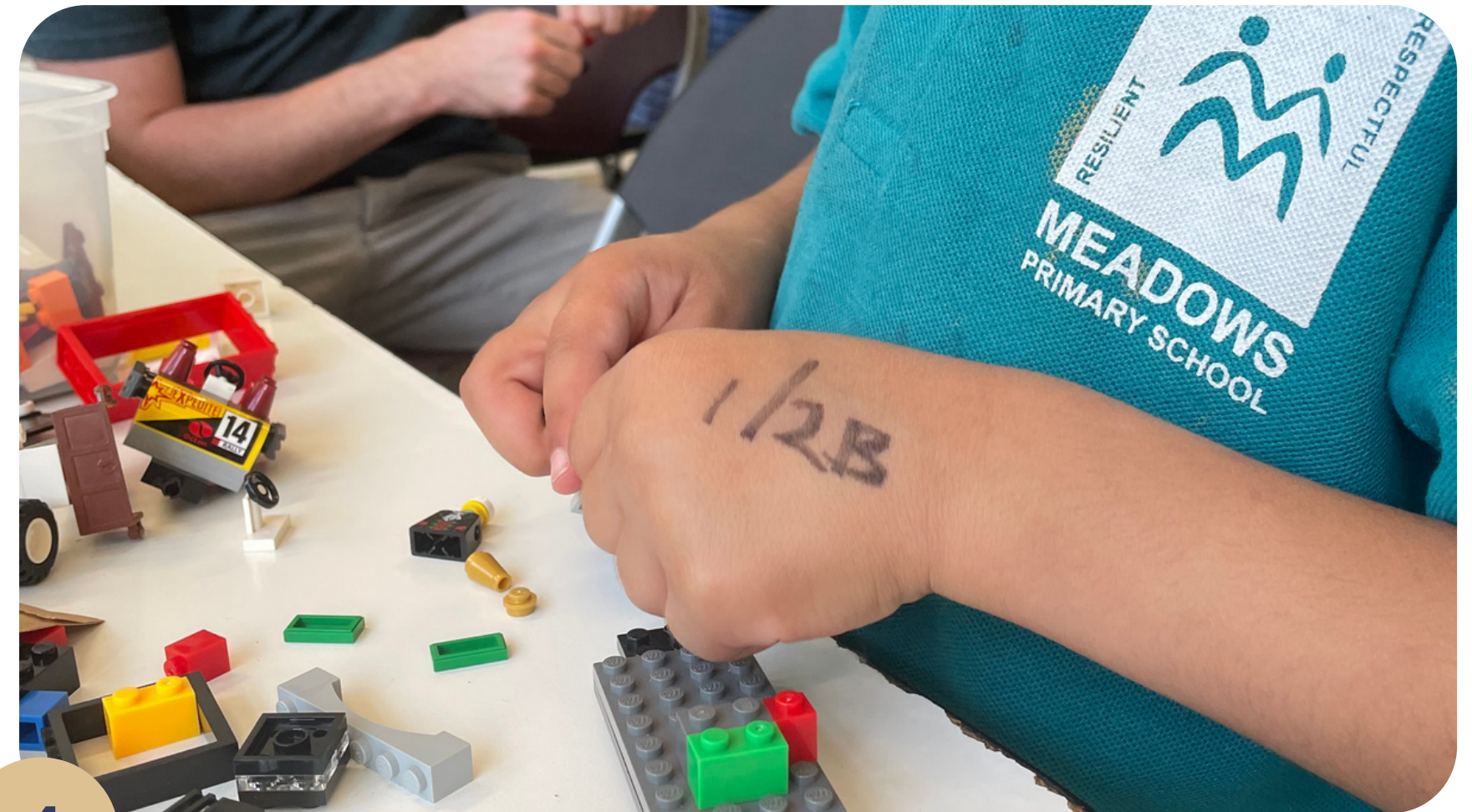
Have a Distinct Separation of Homework Space and Other Activities

Recommendations for Banksia Gardens Youth Services



3

Create a Plan to Further Train and Prepare Study Group Volunteers



4

Develop More Structure and Offerings for Study Group

Recommendations for After-School Programs in the Northern Region



5

Advocate for More Government Funding for After-School Programs



6

Develop Connections and Collaborations with Programs in the Area



Acknowledgements



Liasons

MANAGER COMMUNITY DEVELOPMENT AND YOUTH
Paul Atkinson

AIMING HIGH CO-ORDINATOR
Erin McLindon

STUDY GROUP & SCHOOL HOLIDAY PROGRAM TEAM
LEADER
Bodhi Sweeny

CHIEF EXECUTIVE OFFICER
Gina Dougall

Advisors

Prof. **Holly Ault**

Prof. **Stephen McCauley**

Table 1: After-School Offerings in the Northern Region

LGA	ORGANIZATION	HW CLUB	DROP-IN	SPORTS	ARTS & MUSIC	AGE <10	AGE 10+	DAYS
Merri-bek (Moreland)	Don Bosco Youth Centre		✓	✓		✓	✓	Tu-F
	Fawkner Neighborhood House	✓				✓		Th
	Oxygen Youth Space		✓	✓			✓	M, W, F
Darebin	The Hub @ Northland		✓		✓		✓	Tu-F
	Decibels Youth Music Centre		✓		✓		✓	Tu-F
Whittlesea	Thomastown West Community Hub	✓				✓		W
	Whittlesea YMCA	✓					✓	-
	Mernda Community House	✓				✓		Th
	Innovation Youth Centre		✓	✓	✓		✓	Tu, Th
Nillumbik	Living and Learning Centre Nillumbik				✓	✓		M-Th
	Yarra Plenty Library**	✓				✓		Tu, Th

*excess slide

Table 1: After-School Offerings in the Northern Region (Continued)

LGA	ORGANIZATION	HW CLUB	DROP-IN	SPORTS	ARTS & MUSIC	AGE <10	AGE 10+	DAYS
Yarra	Collingwood Homework Club	✓				✓	✓	W
	Yarra Youth Centre		✓		✓		✓	M-F
	Richmond Youth Hub		✓	✓			✓	Tu, Th-F
	Young Assets Foundation	✓					✓	M-F
Banyule	Himilo Community Connect	✓		✓		✓	✓	M-W
	Banyule Community Health*	✓				✓		Tu
Hume	Spectrum	✓				✓	✓	-
	Youth Central		✓				✓	Th
	Banksia Gardens	✓		✓	✓	✓	✓	Tu-W

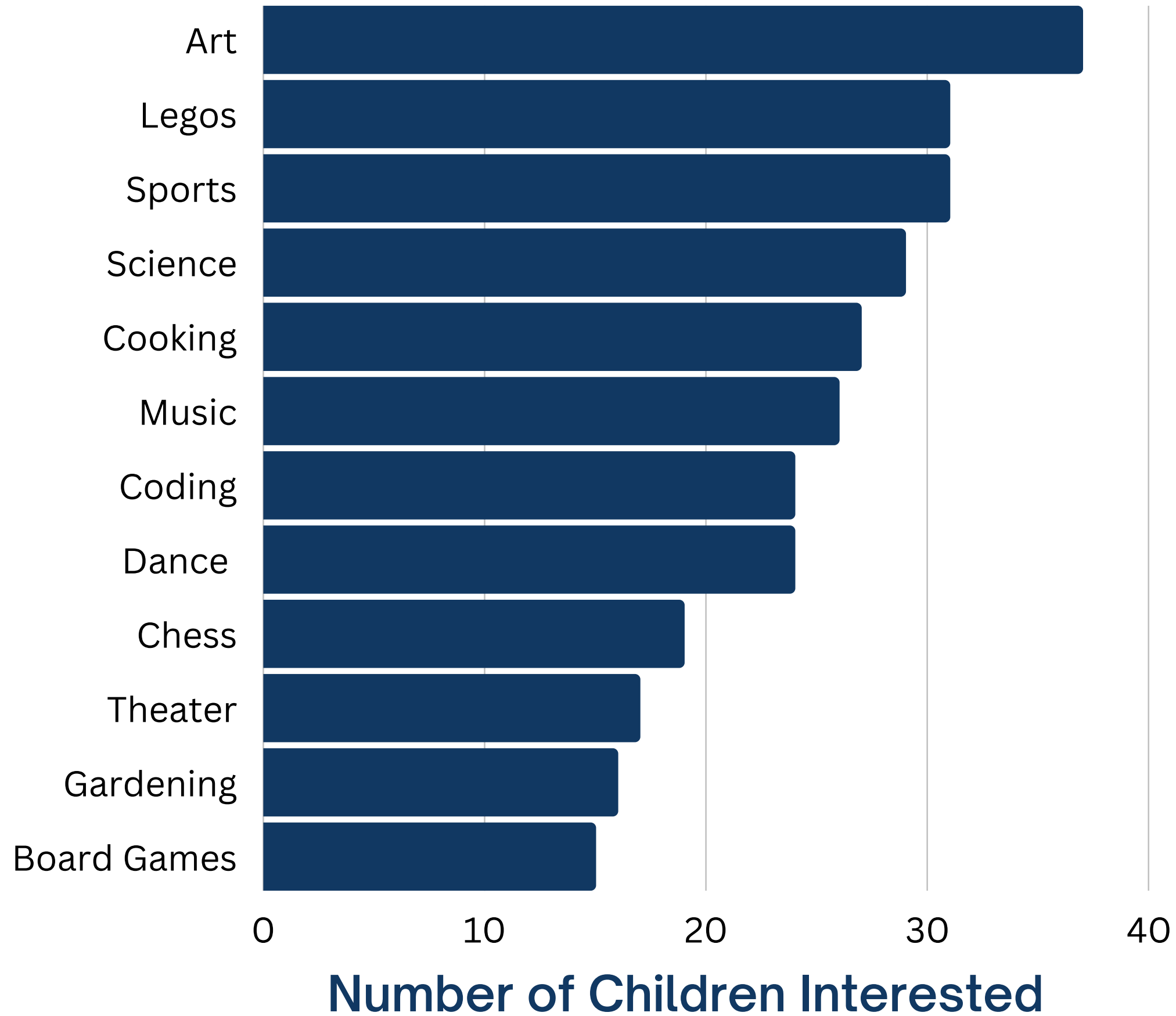
Symbols

* Special Exception (Story Club)

** Special Exception (Coding Club)

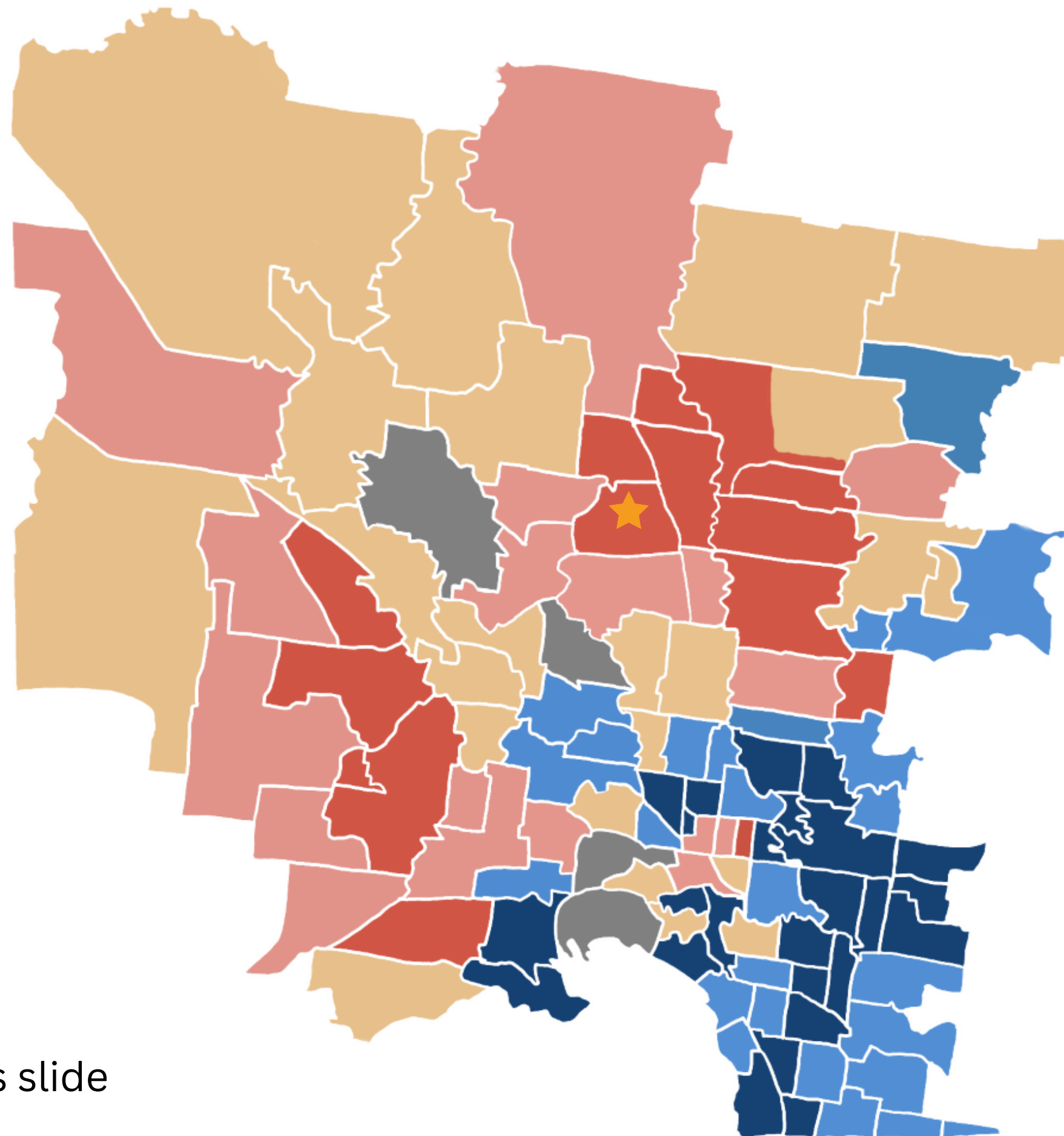
- Not Enough Information

Number of Children Showing Interest in Activities Based on Student Survey (N=54)



*excess slide

Levels of Disadvantage in Greater Melbourne



- Least Disadvantaged
- Q4
- Q3
- Q2
- Most Disadvantaged
- Not Enough Data
- ★ Broadmeadows

*excess slide